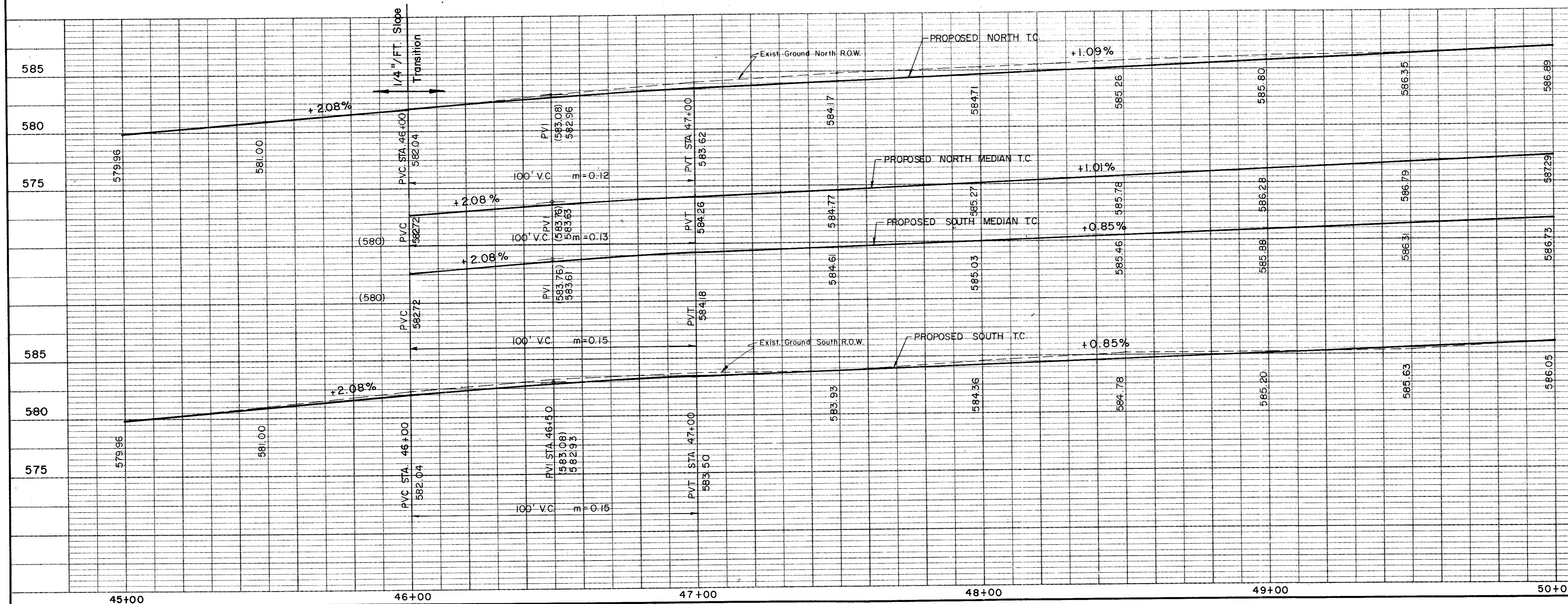


Record Set 5/9/85
 B.M. #4 R.R. Spike On 14" Elm North Spring Valley Rd.
 Sta. 45+50, 83' Lt. ϕ
 Elev. 582.38



NO.	1	1" Gas Relocated	REVISION	BY	DATE
CITY OF ADDISON DALLAS COUNTY, TEXAS SPRING VALLEY ROAD Sta. 45+00 to Sta. 50+00 PAVING GINN, INC. Consulting Engineers Dallas, Texas					
DESIGNED-GF HJ	DRAWN-SM GF	DATE-	FILE	J-178	
APPROVED-H.W.G.	CHECKED-HJ	SCALE-H=1"=20'/V=1"=5'	SHEET	13 OF	