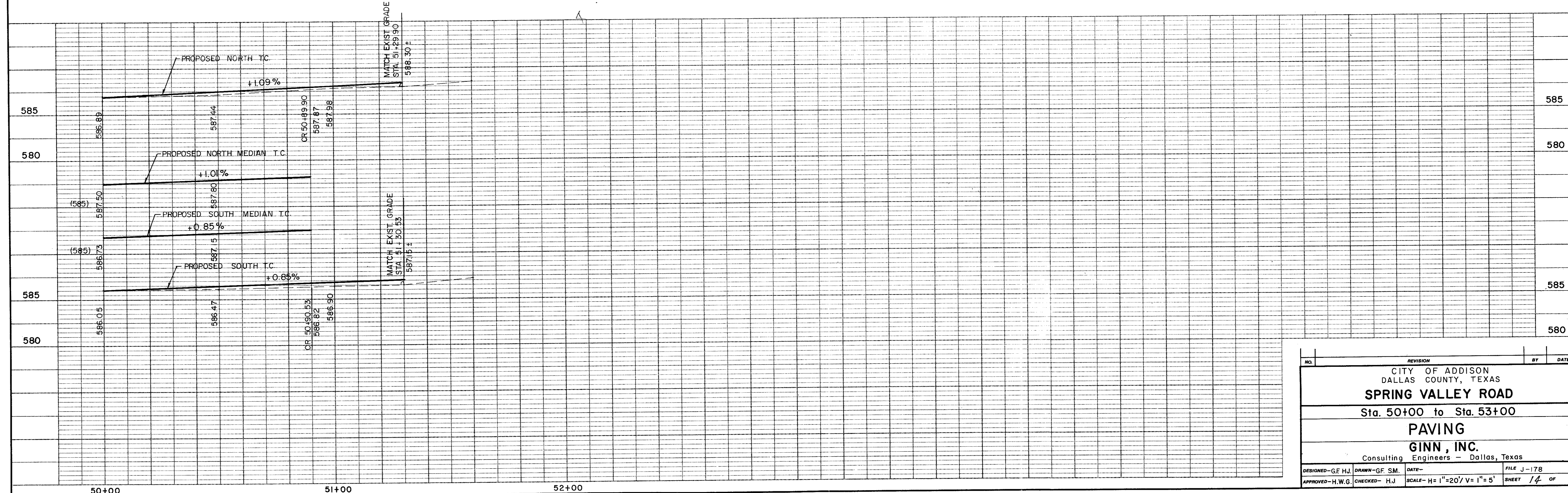


**Record Set 5/9/85**  
 B.M. #5 On Conc. Greenhill School Brick Sign Foundation, S.W. Corner.  
 Elev. 588.18



NO.	REVISION	BY	DATE
CITY OF ADDISON DALLAS COUNTY, TEXAS <b>SPRING VALLEY ROAD</b> Sta. 50+00 to Sta. 53+00 <b>PAVING</b> <b>GINN, INC.</b> Consulting Engineers - Dallas, Texas			
DESIGNED - G.F. H.J.	DRAWN - G.F. S.M.	DATE -	FILE J-178
APPROVED - H.W.G.	CHECKED - H.J.	SCALE - H=1"=20' V=1"=5'	SHEET 14 OF