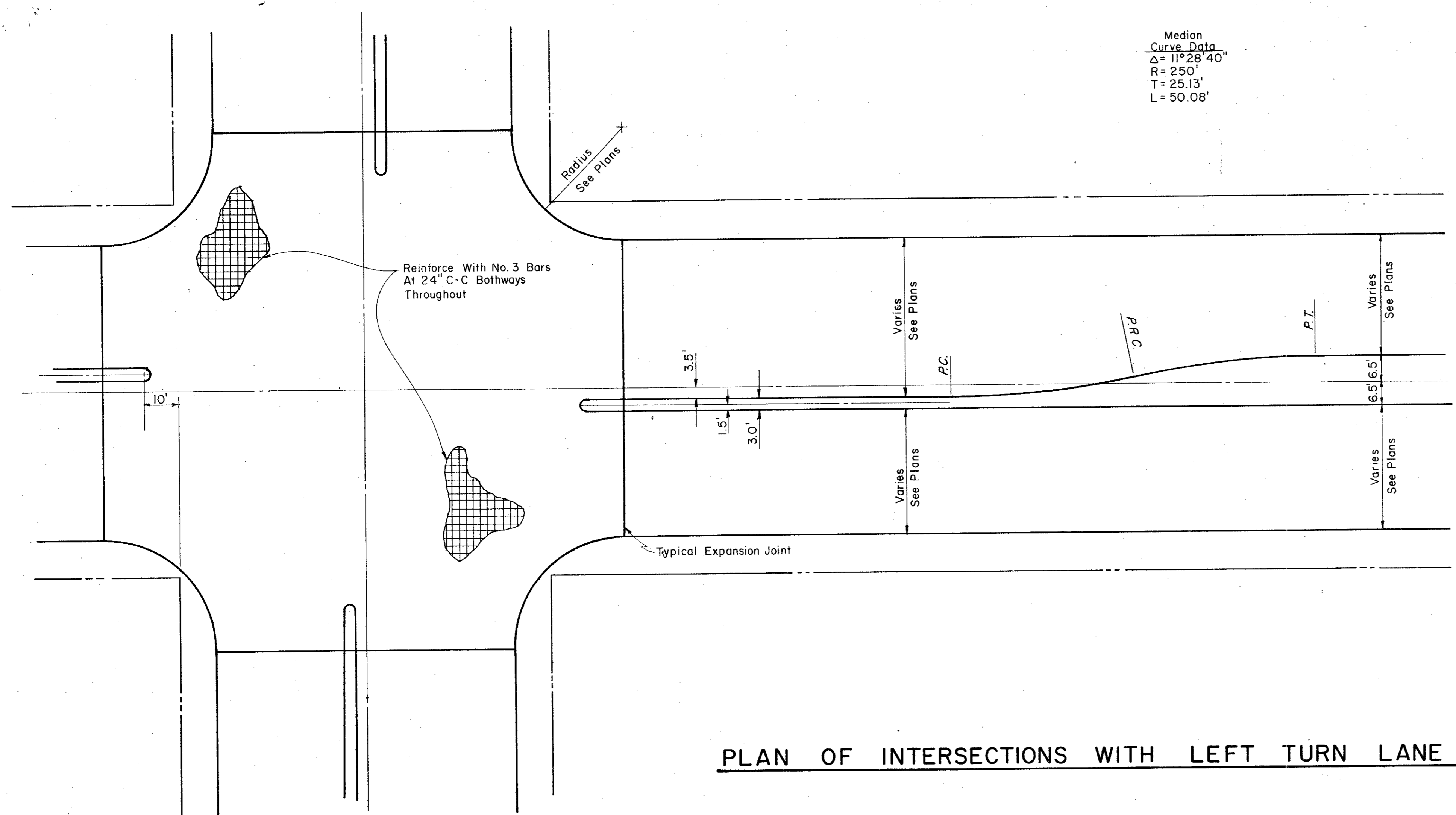
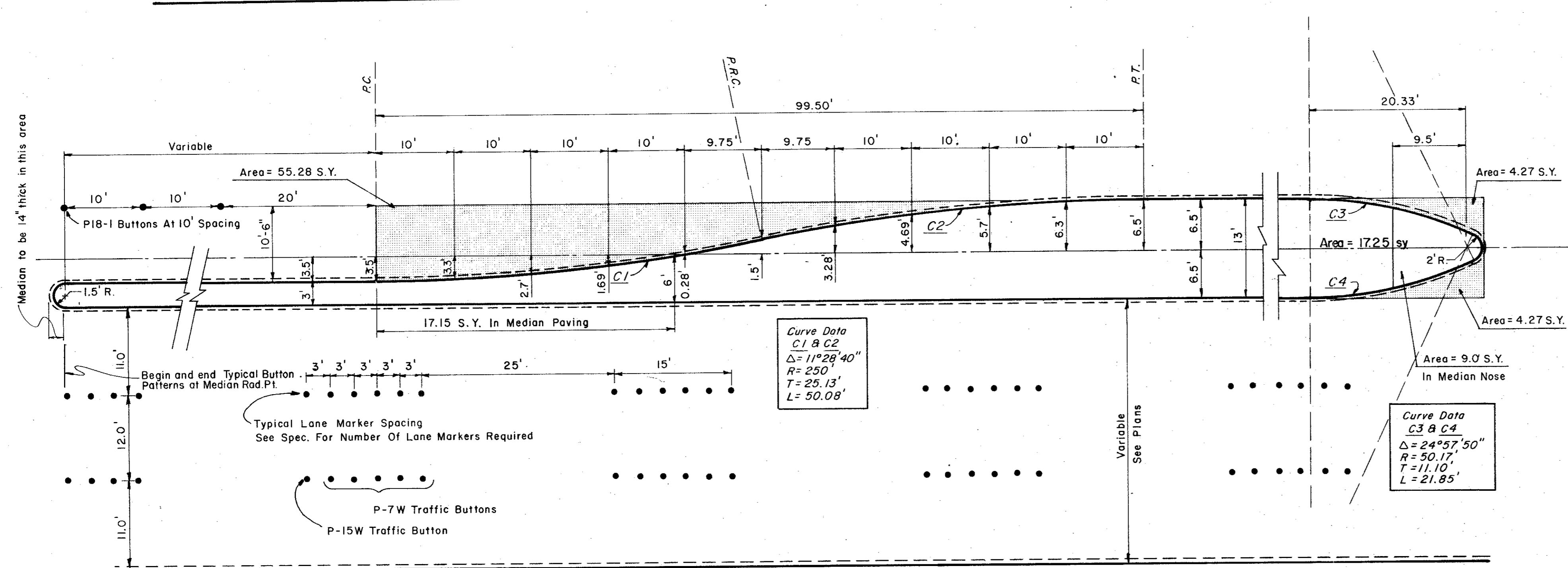


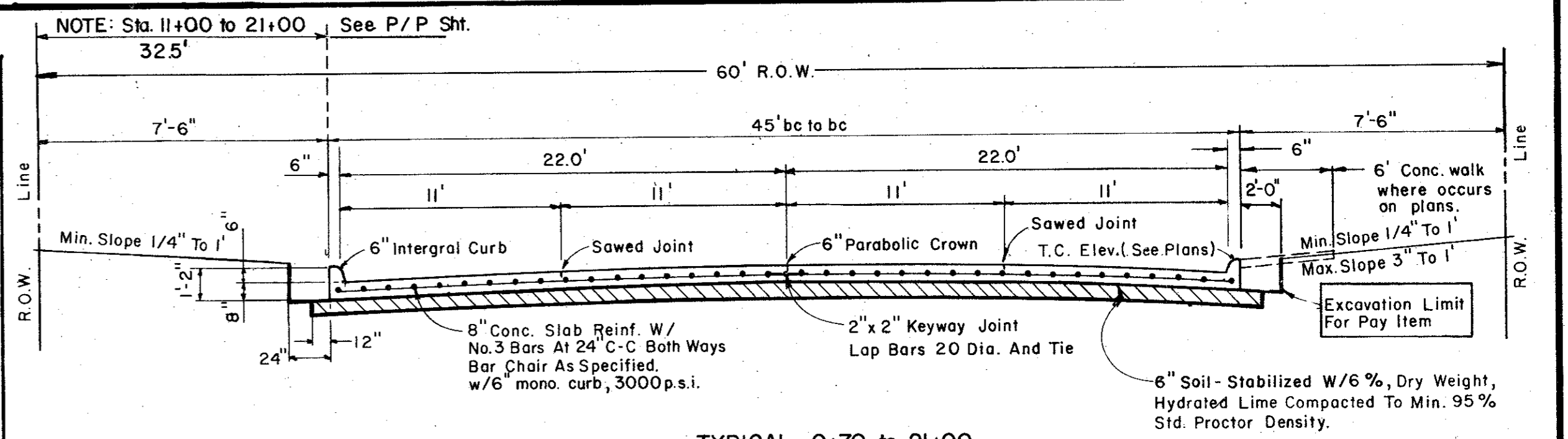
Median
Curve Data
Δ = 11° 28' 40"
R = 250'
T = 25.13'
L = 50.08'



PLAN OF INTERSECTIONS WITH LEFT TURN LANE



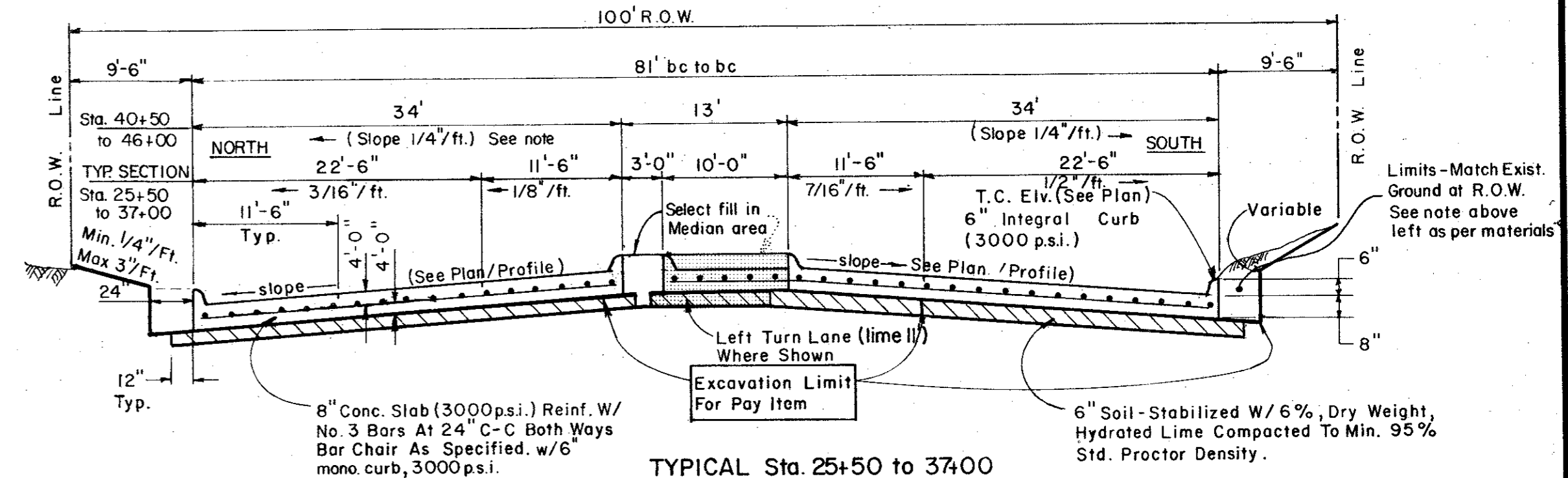
LEFT TURN LANE & LANE MARKER DETAIL



TYPICAL 0+70 to 21+00
UNDIVIDED

NOTE: Backfill material NOT A SEPERATE PAY ITEM. Material acquired from Excavation may be used if approved by Engineer.

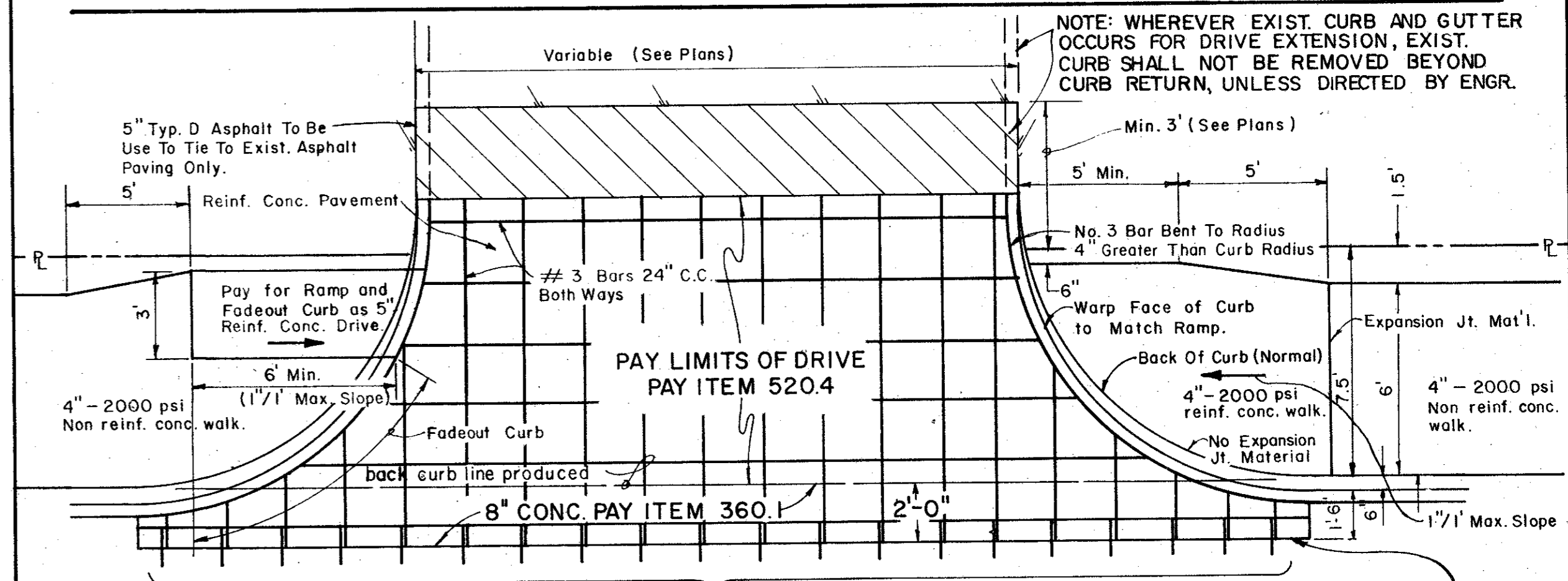
NOTE: From Sta. 21+00 to 25+50, transition from 45' width to 81' width, see plan/profile. From Sta. 37+00 to 40+50, transition from typical section to 1/4" slope. From Sta. 40+50 to 46+00, slope 1/4" ft. From 46+00 to end, transition, see plan.



TYPICAL Sta. 25+50 to 37+00
DIVIDED

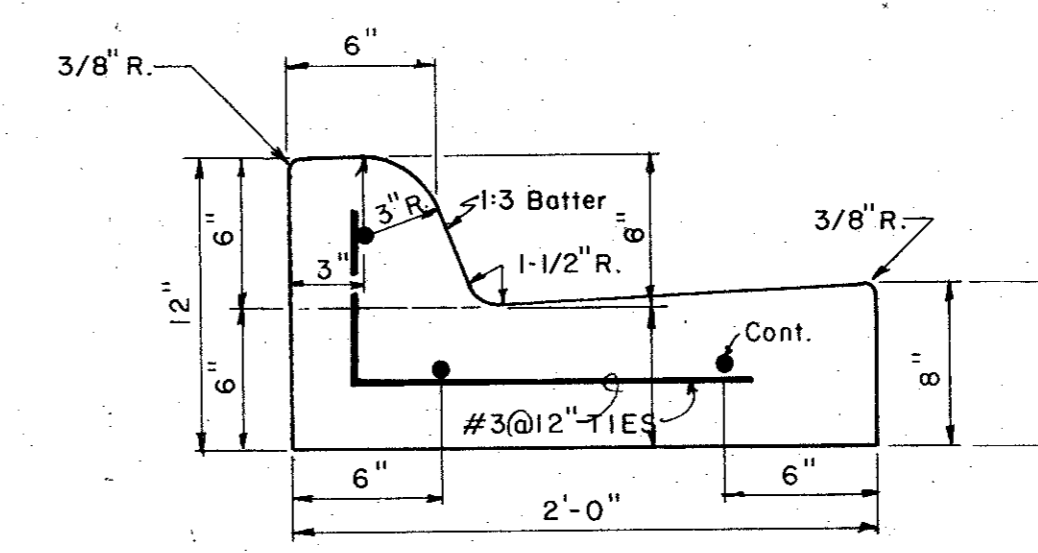
TYPICAL PAVING SECTION DETAILS

FOR TRANSITION, SEE PLAN/PROFILE FOR ELEVATIONS

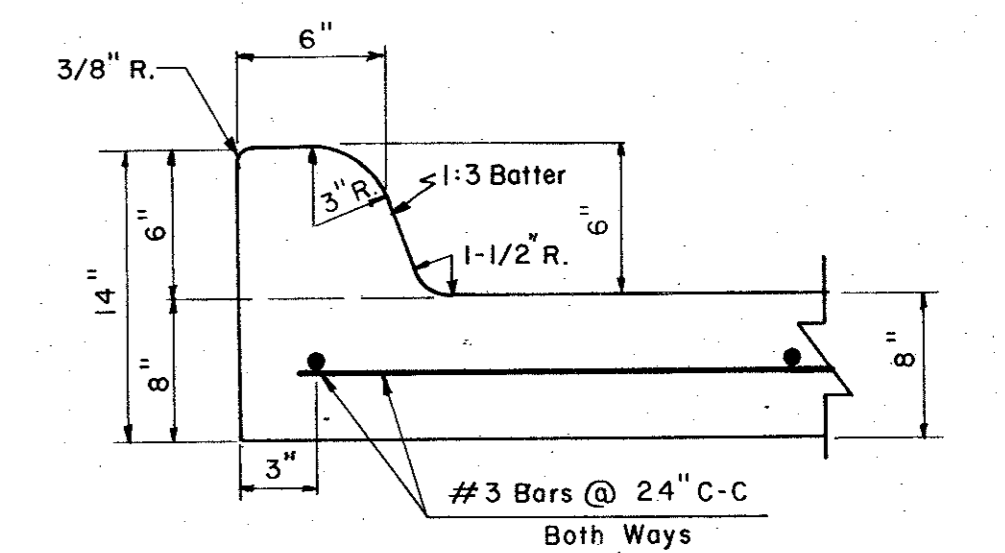


DRIVEWAY PAVING DETAIL

Typ. Barrier Free Ramp at Curved Drive (where occurs - see plans)
Pavement Reinforcement Lapped 30 Dia. or No. 5 Dowel 24" Long
Block Out Limit - If Not Monolithic With Street Pavement
Typ. Barrier Free Ramp at Driveway (where occurs - see plans)



SEPARATE CURB & GUTTER
REINFORCEMENT SHALL BE No. 5 BARS



6" INTEGRAL CURB & GUTTER DETAIL

Record Set 5/9/85

CITY OF ADDISON
DALLAS COUNTY, TEXAS

PAVING DETAILS A

GINN, INC.
Consulting Engineers Dallas, Texas

| | | | |
|------------------|------------------|--------------|-------------|
| DESIGNED - H. K. | DRAWN - S. M. M. | DATE | JOB No. |
| APPROVED - H. G. | CHECKED - G. F. | SCALE - NONE | SHEET 15 OF |