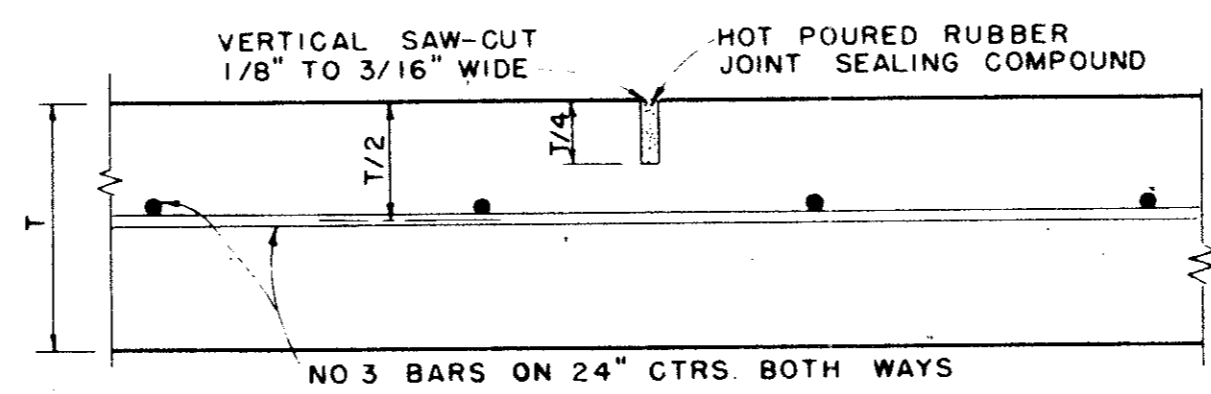


**SPACING DIAGRAM FOR JOINTS**

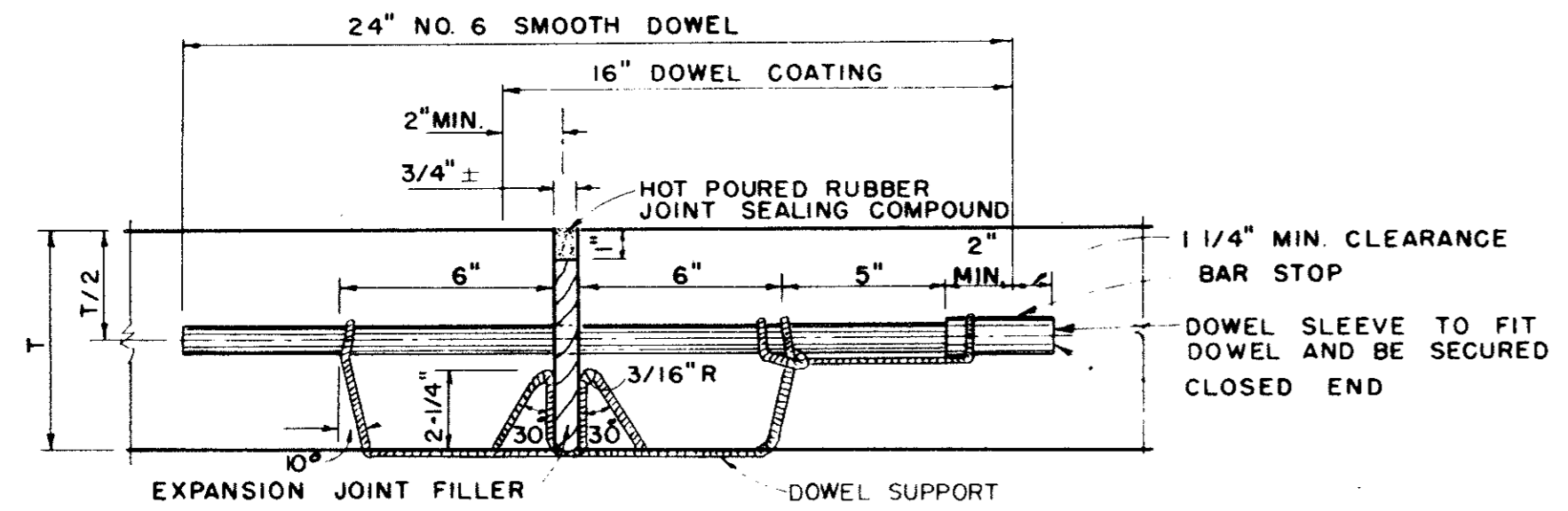
IDENTICAL FOR STREETS (CONCRETE PAVEMENT OR BASE) AND ALLEYS EXCEPT THAT EXPANSION JOINTS FOR ALLEYS SHALL BE PLACED AT THE END OF THE RETURN IN LINE WITH THE PROPERTY LINE. SPACING OF EXPANSION JOINTS SHALL NOT EXCEED 600 FEET.

CONSTRUCTION JOINT OR SAWED LONGITUDINAL DUMMY JOINT ALONG C.L. OF ALL SINGLE ROADWAY SECTIONS EXCEPT 20' ROADWAY.  
ADDITIONAL SIMILAR JOINT 10'-0" EACH SIDE C.L. FOR 56' & 60' ROADWAY SECTIONS



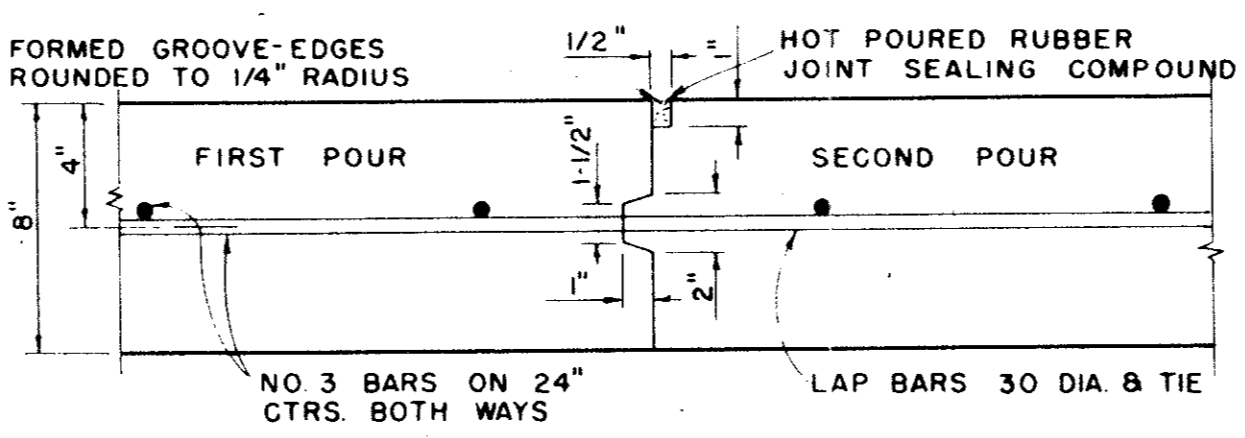
**SAWED DUMMY JOINT**

IDENTICAL FOR STREETS AND ALLEYS EXCEPT ALLEY LONGITUDINAL REINFORCEMENT BARS



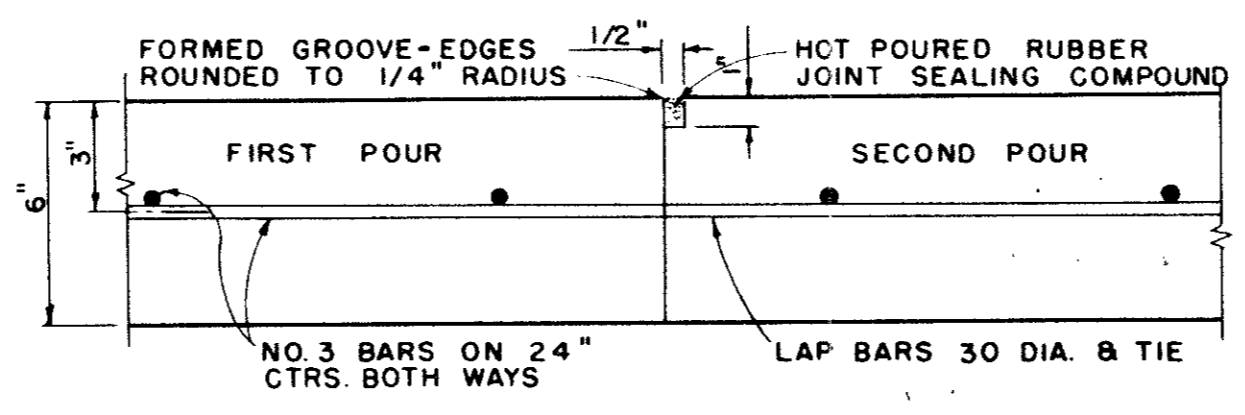
**TRANSVERSE EXPANSION JOINT**

IDENTICAL FOR STREETS & ALLEYS



**CONSTRUCTION JOINT**

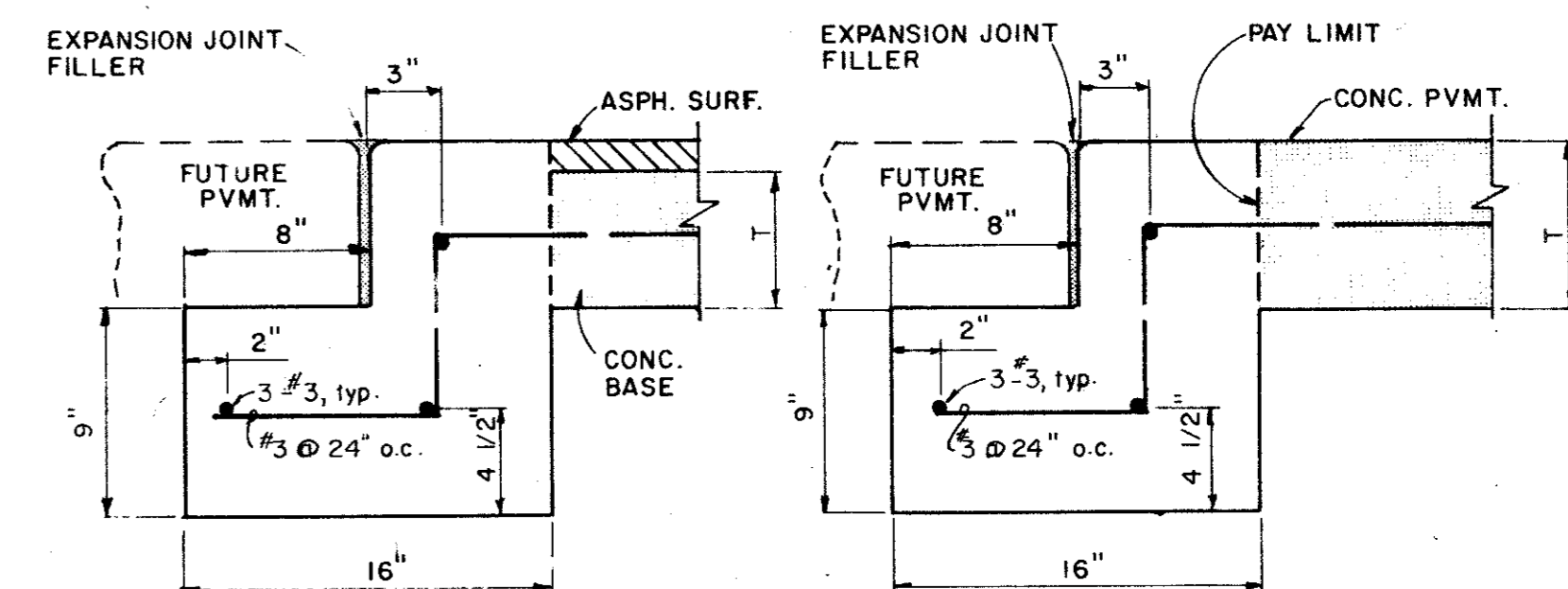
FOR 8" THICKNESS PAVEMENT OR BASE



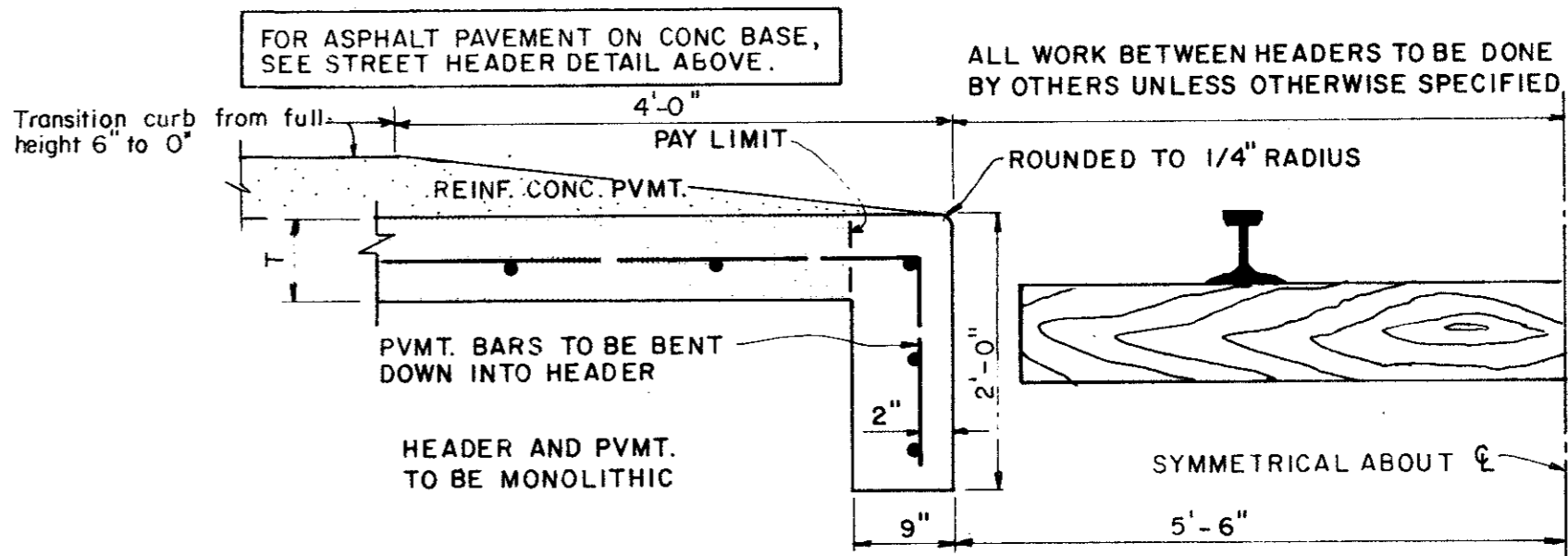
**CONSTRUCTION JOINT**

FOR 6" THICKNESS PAVEMENT OR BASE

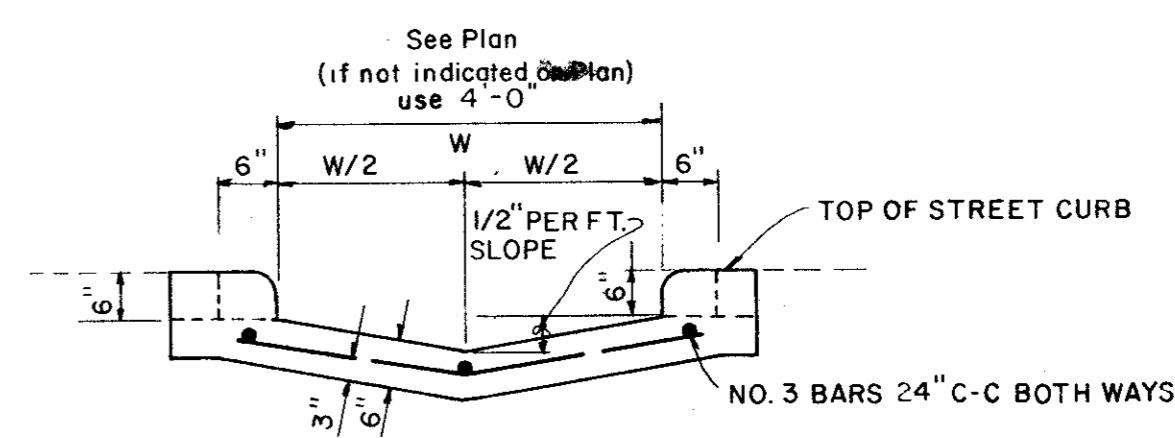
IDENTICAL FOR STREETS AND ALLEYS EXCEPT ALLEY LONGITUDINAL REINFORCEMENT BARS



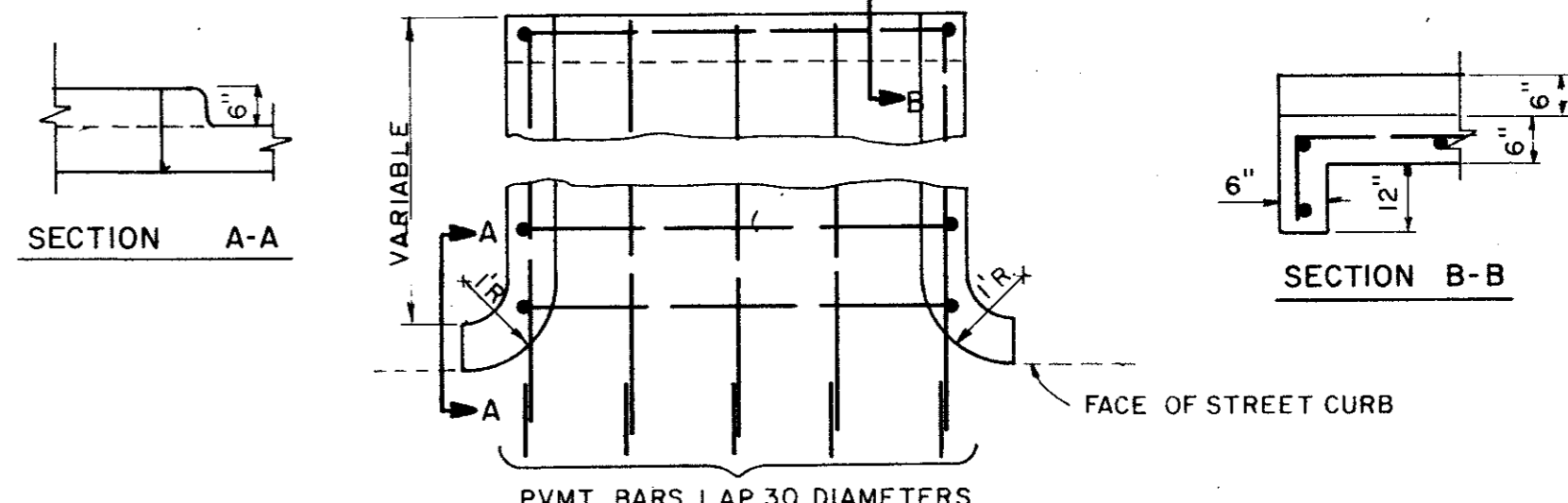
**STREET HEADER**



**RAILROAD HEADER**

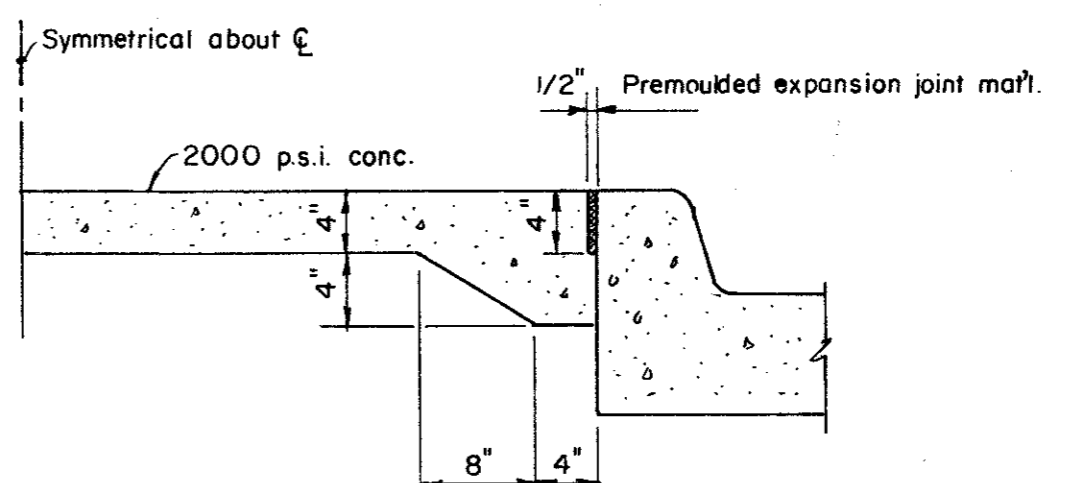


**SECTION AT CURB FACE**



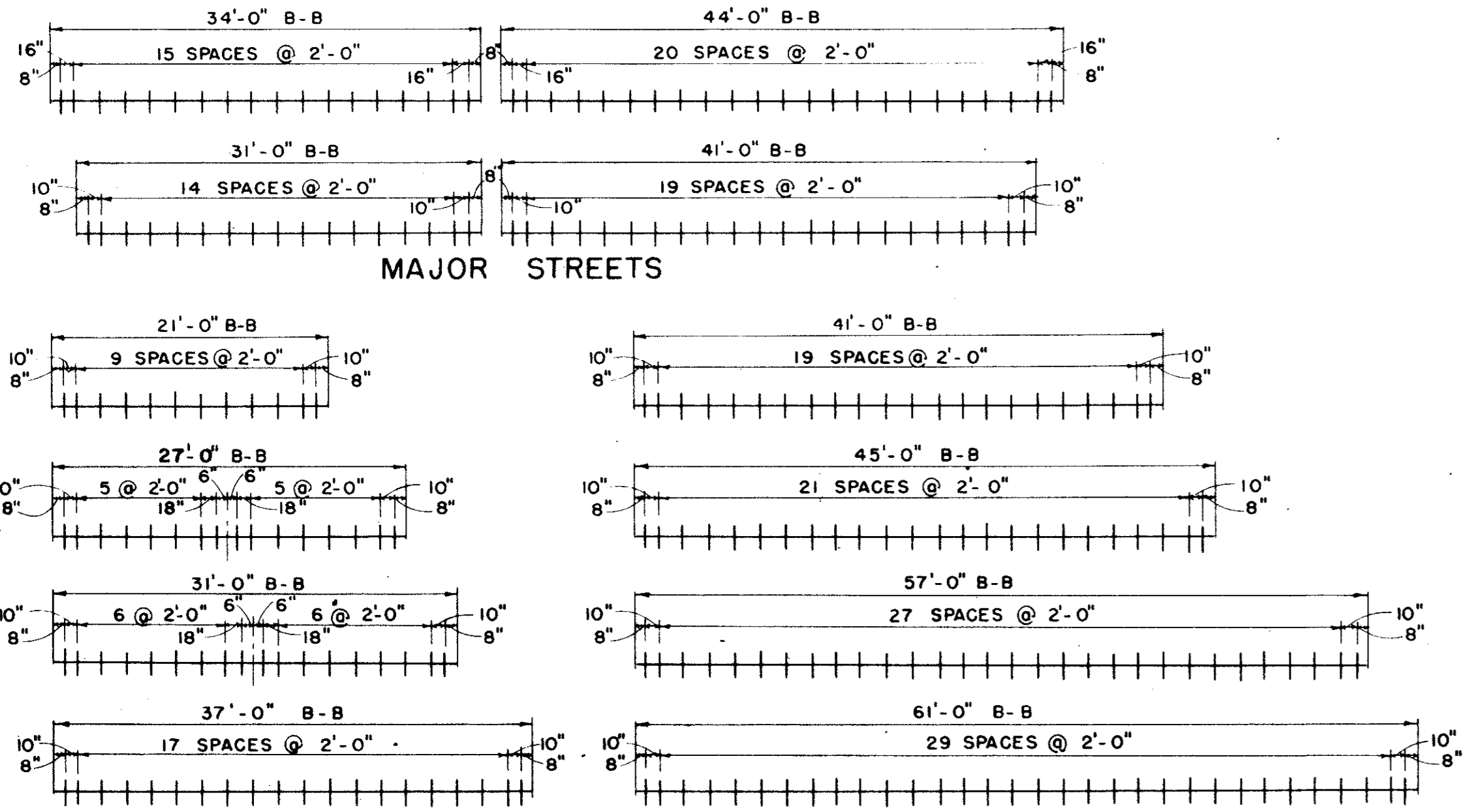
**PLAN**

**FLUME**



**NON-REINFORCED MEDIAN PAVEMENT**

IN ALL AREAS LESS THAN 6' BC TO BC UNLESS OTHERWISE DIRECTED BY ENGINEER.



**RESIDENTIAL & SECONDARY STREETS**

**SPACING DIAGRAM FOR DOWELS AT EXPANSION JOINTS**

Record Set 5/9/85

CITY OF ADDISON DALLAS COUNTY, TEXAS	
<b>PAVING DETAILS B</b>	
GINN, INC. Consulting Engineers Dallas, Texas	
DESIGNED-H.K. DRAWN-S.M.M. DATE:	JOB No.
APPROVED-H.G. CHECKED-G.F. SCALE- NONE	SHEET 16 OF