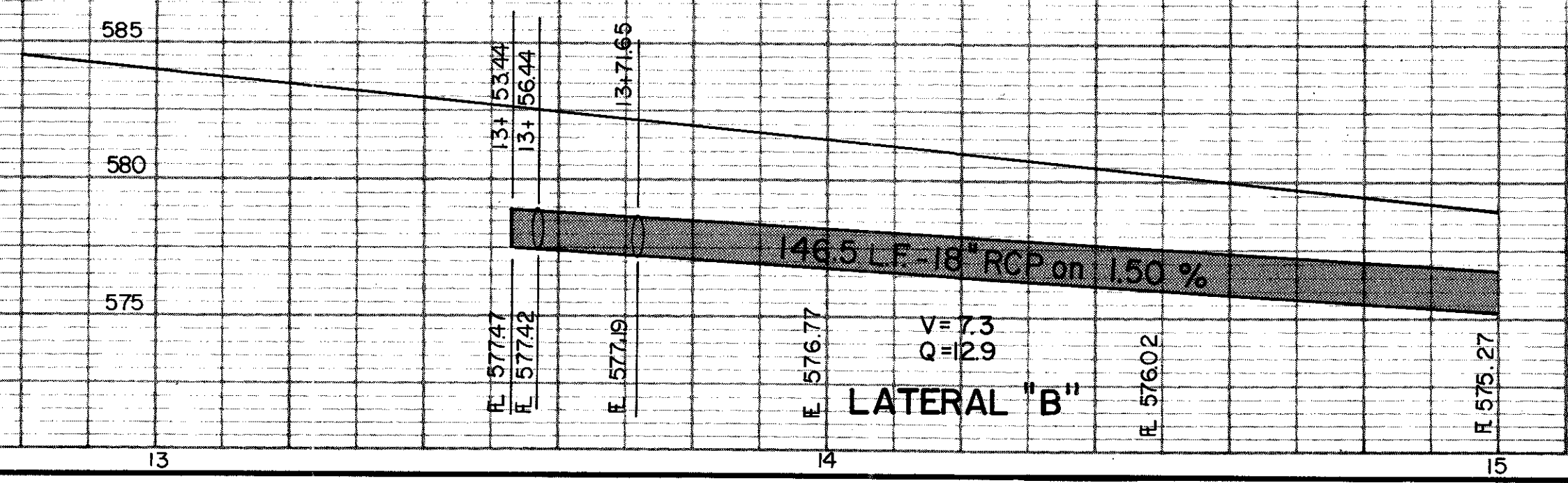
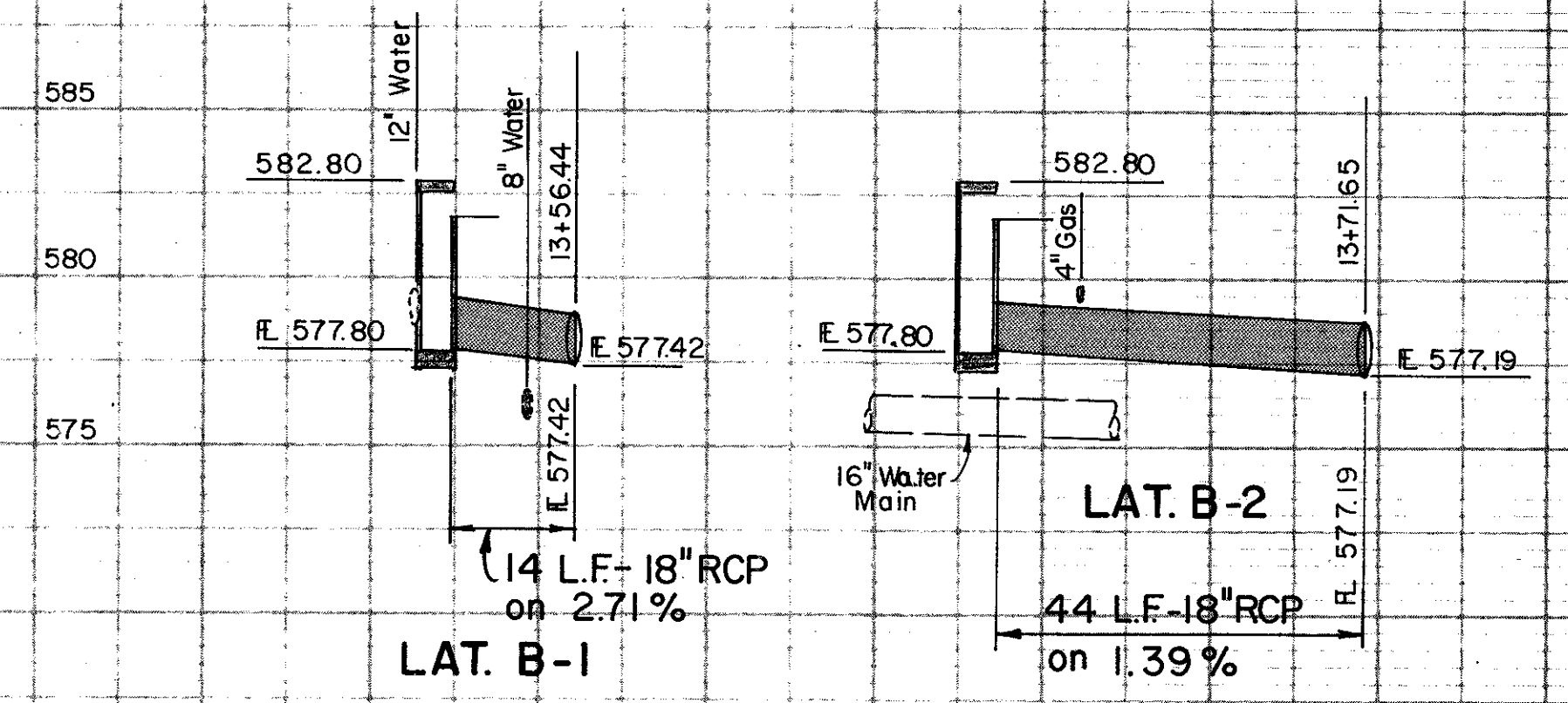


NOTE: ALL RADII ARE 10' R. UNLESS OTHERWISE NOTED

Robert S. Folsom

Record Drawing 4/10/85



No.	Revision	By	Date
CITY OF ADDISON DALLAS COUNTY, TEXAS SPRING VALLEY ROAD DRAINAGE - STA. 10+00 to STA. 15+00 GINN, INC. Consulting Engineers Dallas, Texas			
Designed - GF	Drawn - GF	Date -	Job No. - J-178
Approved - HWG	Checked - HBJ	Scale - 1" = 20' H., 1" = 5' V.	Sheet 20 of