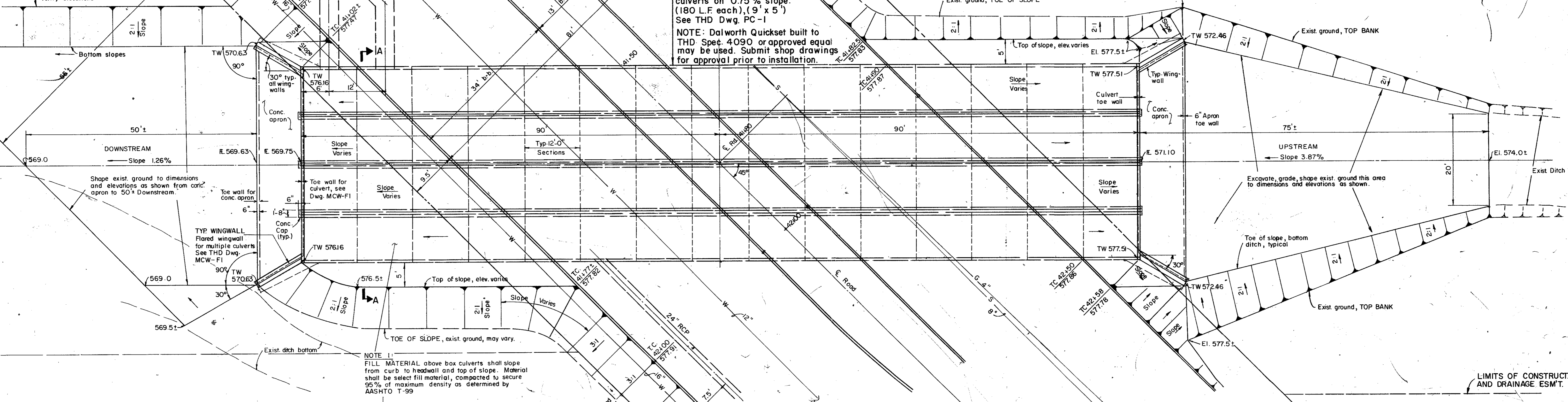


LIMITS OF CONSTRUCTION AND DRAINAGE EASEMENT

PROPOSED Top Bank, existing Natural ground, may vary, verify elevations



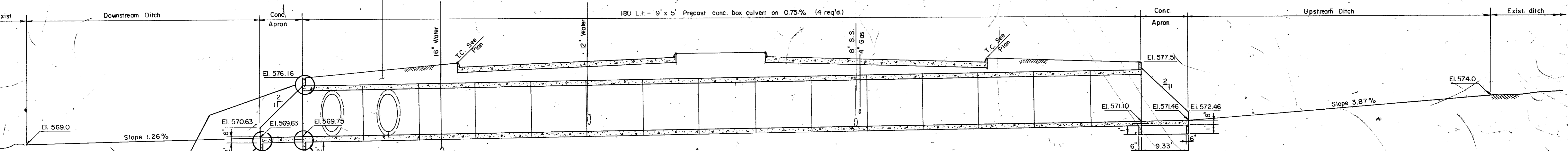
4 - THD Precast concrete box culverts on 0.75% slope. (180 L.F. each), (9' x 5') See THD Dwg. PC-1

NOTE: Dalworth Quickset built to THD Spec. 4090 or approved equal may be used. Submit shop drawings for approval prior to installation.

NOTE 1: FILL MATERIAL above box culverts shall slope from curb to headwall and top of slope. Material shall be select fill material, compacted to secure 95% of maximum density as determined by AASHTO T-99

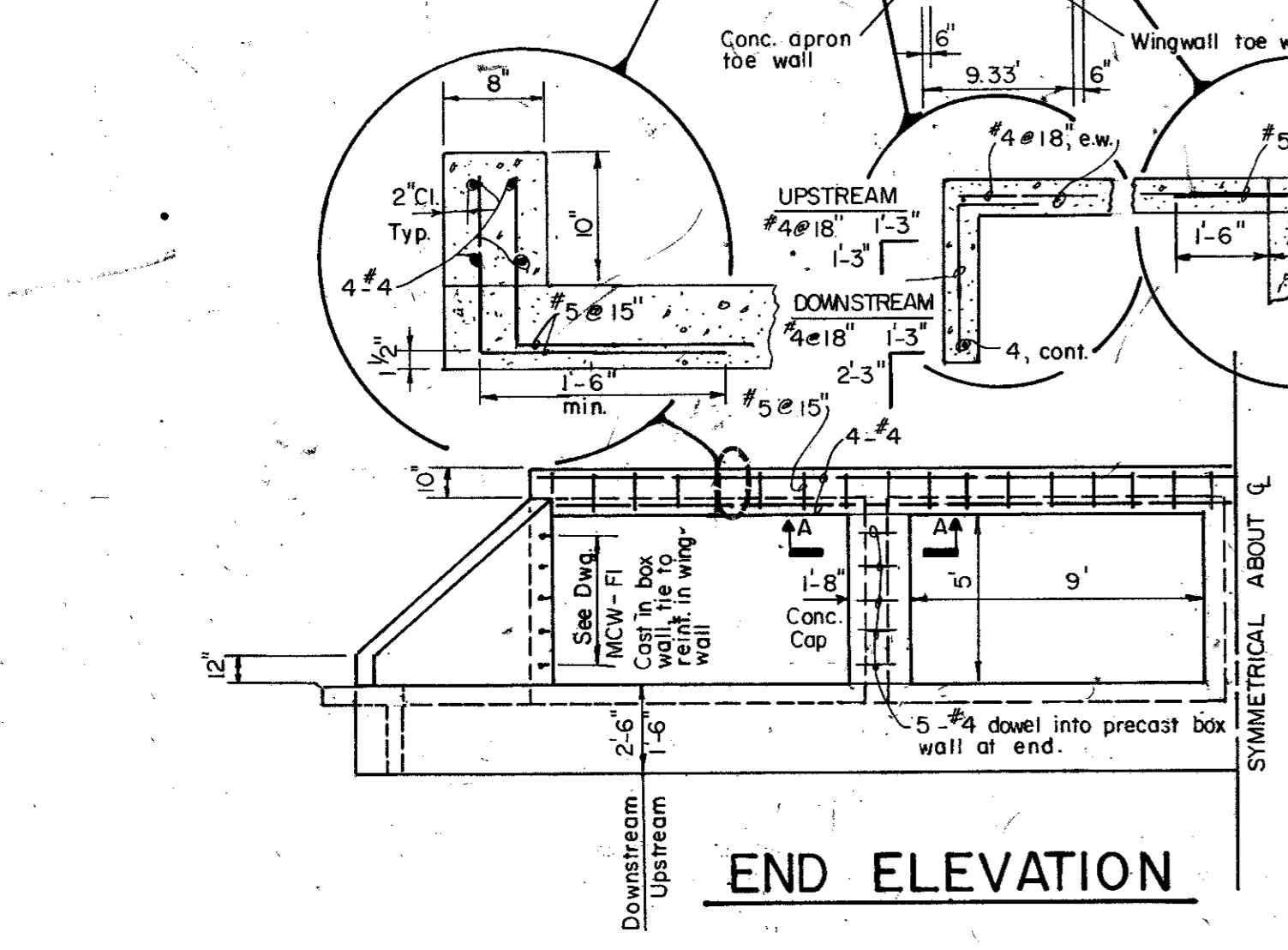
ENLARGED PLAN-PRECAST BOX CULVERT

SCALE: 1" = 10'

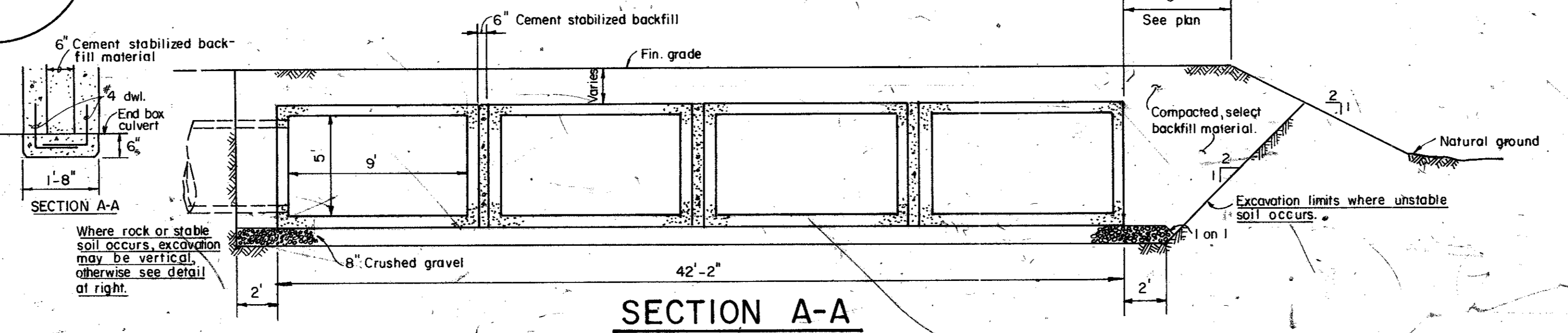


TYPICAL SECTION

SCALE: 1" = 10' H., 1" = 5' V



END ELEVATION



SECTION A-A

Record Set 5/9/85

CITY OF ADDISON DALLAS COUNTY, TEXAS			
SPRING VALLEY ROAD			
TYP. BOX CULVERT DETAILS			
GINN, INC. Consulting Engineers Dallas, Texas			
Designed - GF	Drawn - GF	Date -	Job No. - J-178
Approved - HWG	Checked - HBJ	Scale - As Shown	Sheet 26A of