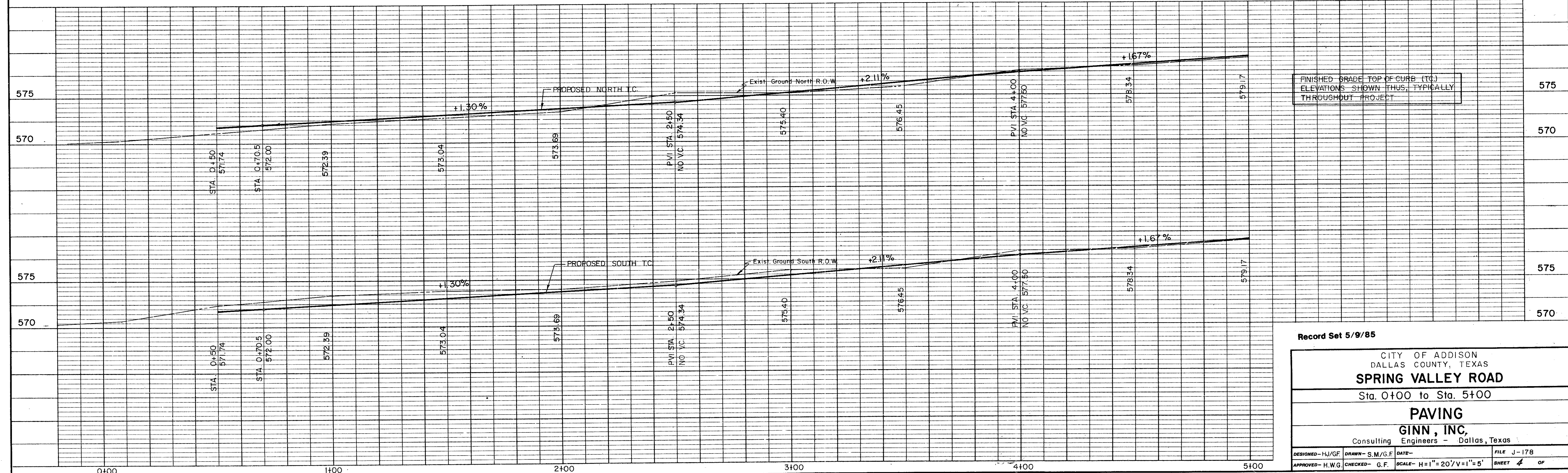


B.M. "D" cut on Conc. Walk S.W. corner of 7-11 Bldg. at N.E. Cor. of Spring Valley and Marsh. ELEV. = 572.565  
Greenhouse Village Properties, Ltd.

NOTE: ALL RADII ARE 10' R. UNLESS OTHERWISE NOTED



Record Set 5/9/85

CITY OF ADDISON  
DALLAS COUNTY, TEXAS  
**SPRING VALLEY ROAD**  
Sta. 0+00 to Sta. 5+00

**PAVING**  
GINN, INC.  
Consulting Engineers - Dallas, Texas

DESIGNED - H.J.G.F. DRAWN - S.M./G.F. DATE - FILE J-178  
APPROVED - H.W.G. CHECKED - G.F. SCALE - H=1"=20'/V=1"=5' SHEET 4 OF