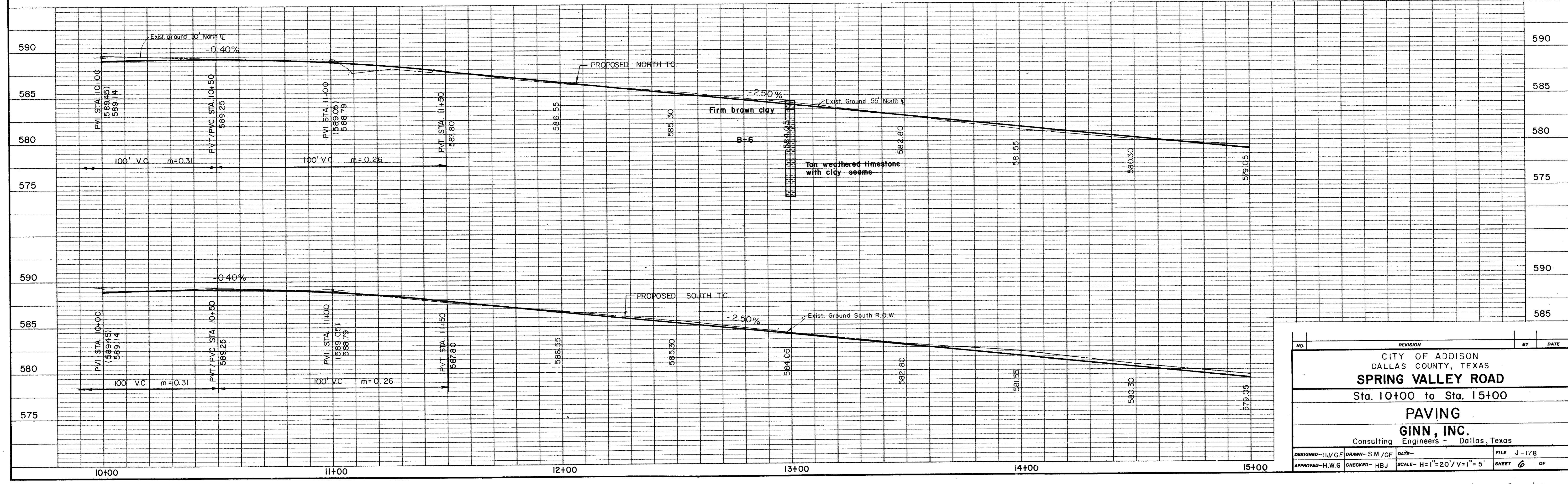


Elvin Levenson

NOTE: ALL RADII ARE 10' R. UNLESS OTHERWISE NOTED

Robert S. Folsom

Record Set 5/9/85



NO.	REVISION	BY	DATE
CITY OF ADDISON DALLAS COUNTY, TEXAS <b>SPRING VALLEY ROAD</b> Sta. 10+00 to Sta. 15+00 <b>PAVING</b> <b>GINN, INC.</b> Consulting Engineers - Dallas, Texas			
DESIGNED-HJ/GF	DRAWN-S.M./GF	DATE-	FILE J-178
APPROVED-H.W.G	CHECKED-HBJ	SCALE-H=1"=20'/V=1"=5'	SHEET 6 OF

Spring Valley