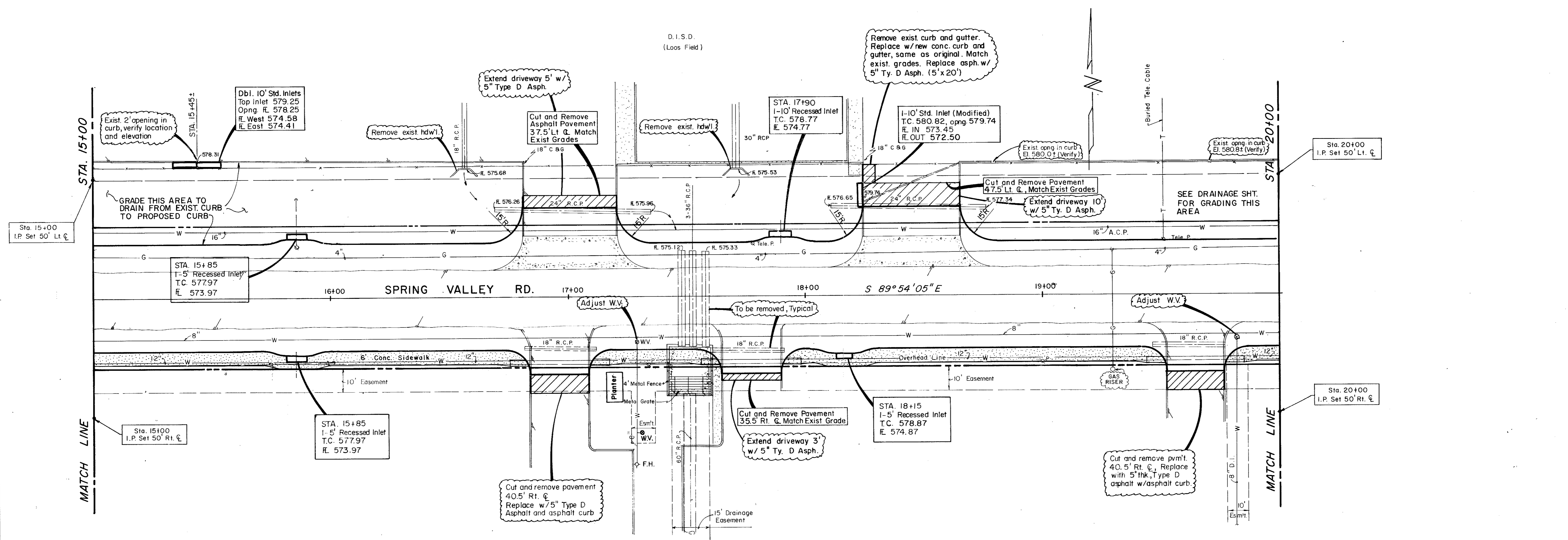
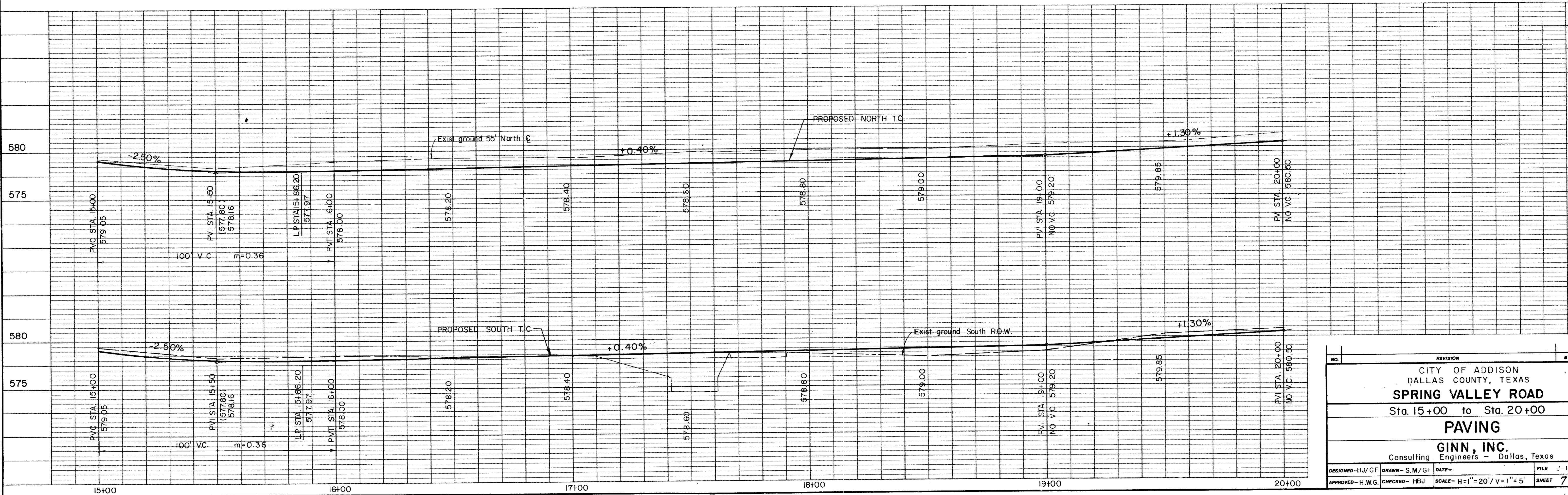


D. I. S. D.
(Loos Field)



NOTE: ALL RADII ARE 10' R. UNLESS OTHERWISE NOTED

Record Set 5/9/85



NO.	REVISION	BY	DATE
CITY OF ADDISON DALLAS COUNTY, TEXAS SPRING VALLEY ROAD Sta. 15+00 to Sta. 20+00 PAVING GINN, INC. Consulting Engineers - Dallas, Texas			
DESIGNED-HJ/GF	DRAWN-S.M/GF	DATE-	FILE J-178
APPROVED-H.W.G.	CHECKED-HBJ	SCALE-H=1"=20'/V=1"=5'	SHEET 7 OF

Spring Valley