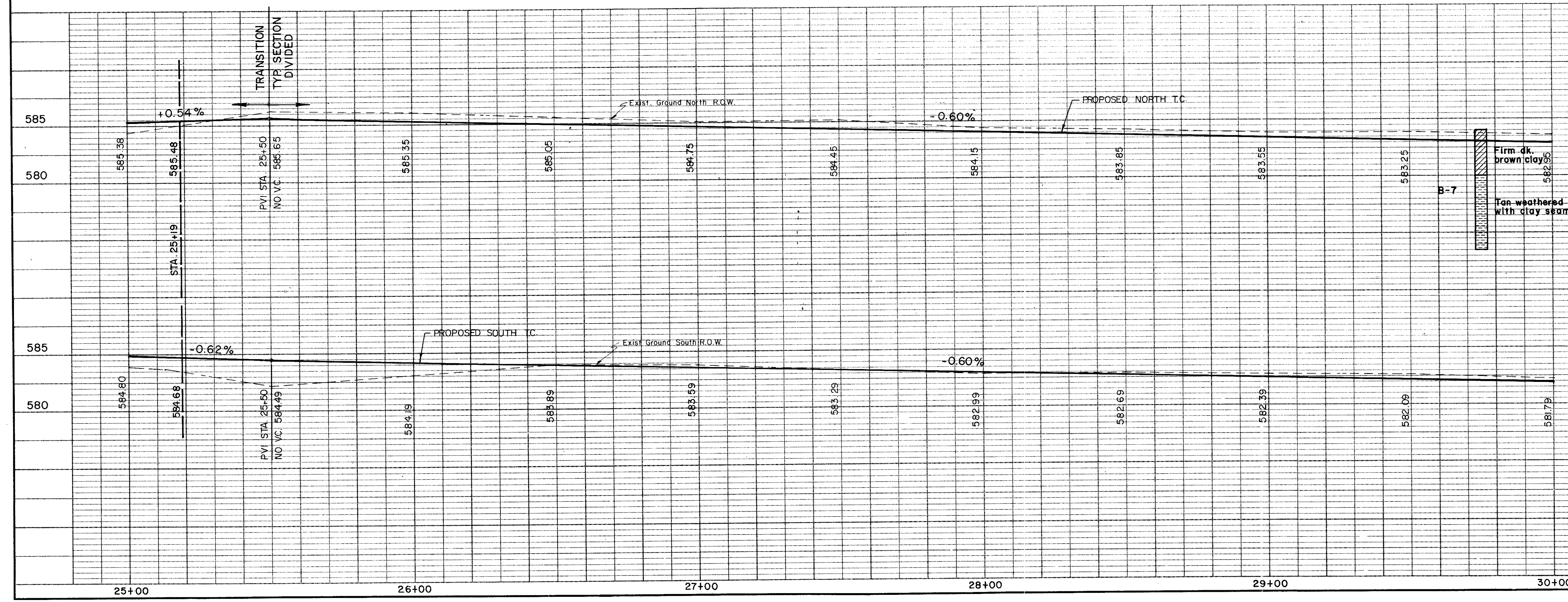


**Record Drawing 4/10/85**  
 B.M. #2 On Conc. At N.E. Corner, Sidewalk Of Farmers Branch  
 Fire Station No. 2 At N.E. Of Bldg.  
 Elev. 584.57



NO.	1	REVISION	4" Gas Relocated	BY	RB	DATE	7/9/82
CITY OF ADDISON DALLAS COUNTY, TEXAS <b>SPRING VALLEY ROAD</b> Sta. 25+00 to Sta. 30+00 <b>PAVING</b> <b>GINN, INC.</b> Consulting Engineers - Dallas, Texas							
DESIGNED	GF, HJ	DRAWN	S, M, G, F	DATE		FILE	J-17B
APPROVED	H, W, G	CHECKED	H, B, J	SCALE	H=1"=20' V=1"=5'	SHEET	9 OF