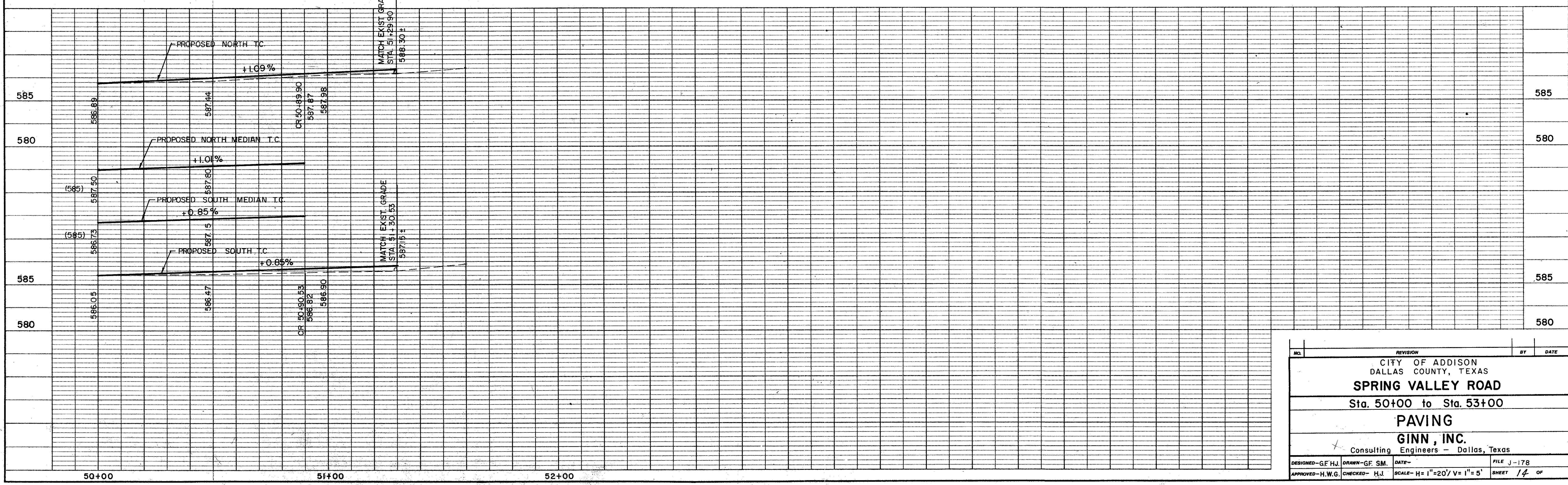


B.M. #5 On Conc. Greenhill School Brick Sign Foundation, S.W. Corner.
Elev. 588.18



NO.	REVISION	BY	DATE
CITY OF ADDISON DALLAS COUNTY, TEXAS SPRING VALLEY ROAD Sta. 50+00 to Sta. 53+00 PAVING GINN, INC. Consulting Engineers - Dallas, Texas			
DESIGNED - GF H.J.	DRAWN - GF S.M.	DATE -	FILE J-178
APPROVED - H.W.G.	CHECKED - H.J.	SCALE - H = 1" = 20' / V = 1" = 5'	SHEET 14 OF