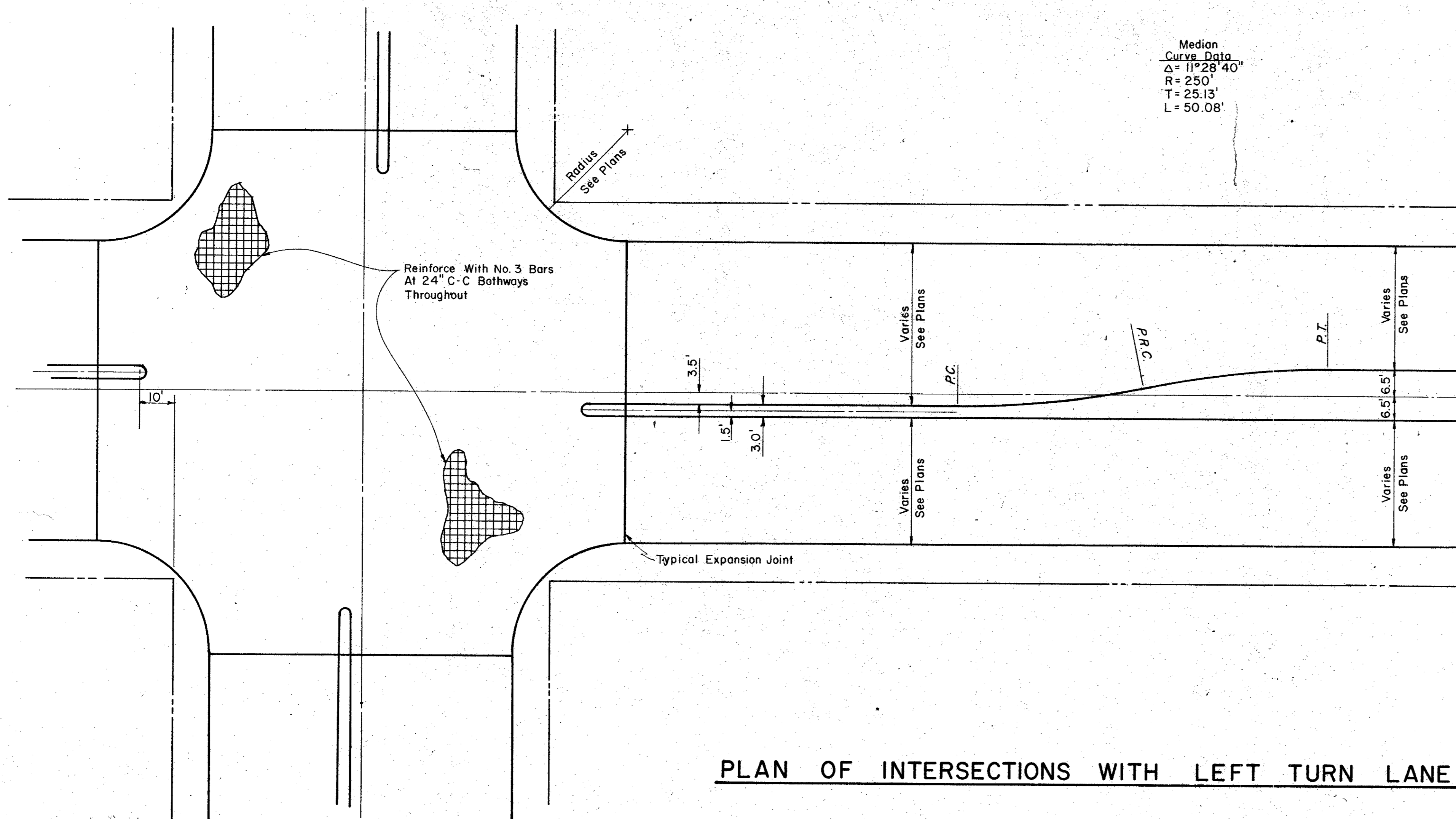
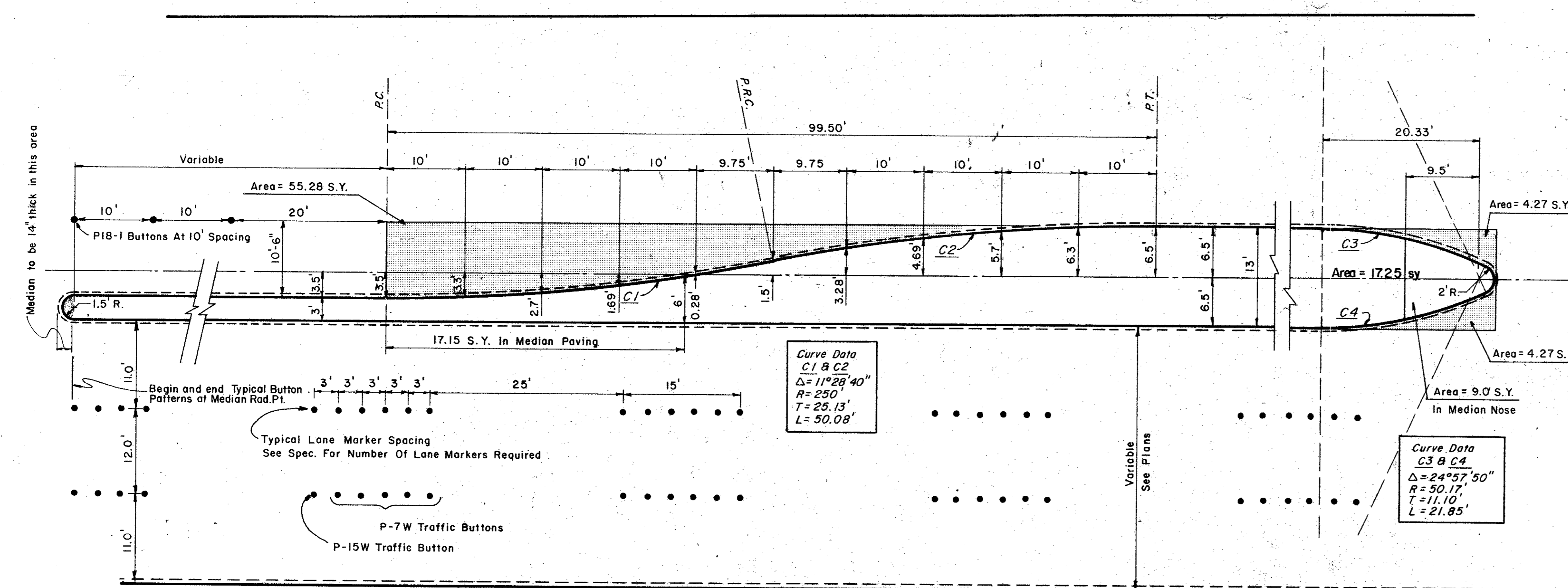


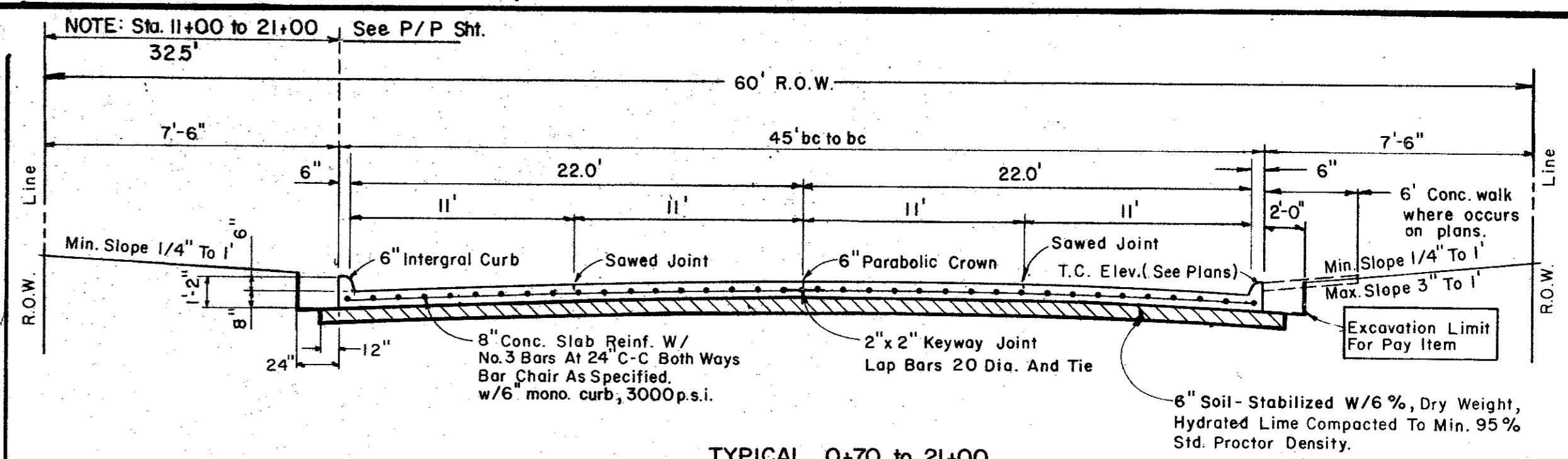
Median
Curve Data
 $\Delta = 11^{\circ}28'40''$
 $R = 250'$
 $T = 25.13'$
 $L = 50.08'$



PLAN OF INTERSECTIONS WITH LEFT TURN LANE



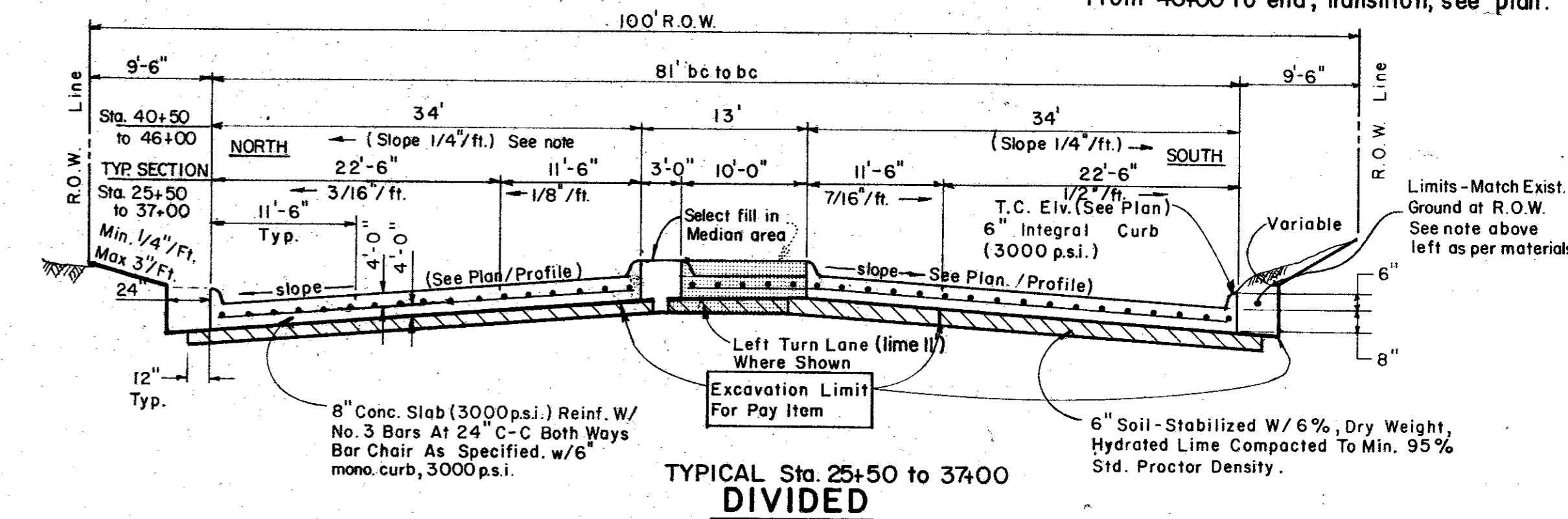
LEFT TURN LANE & LANE MARKER DETAIL



TYPICAL 0+70 to 21+00
UNDIVIDED

NOTE: Backfill material NOT A SEPERATE PAY ITEM. Material acquired from Excavation may be used if approved by Engineer.

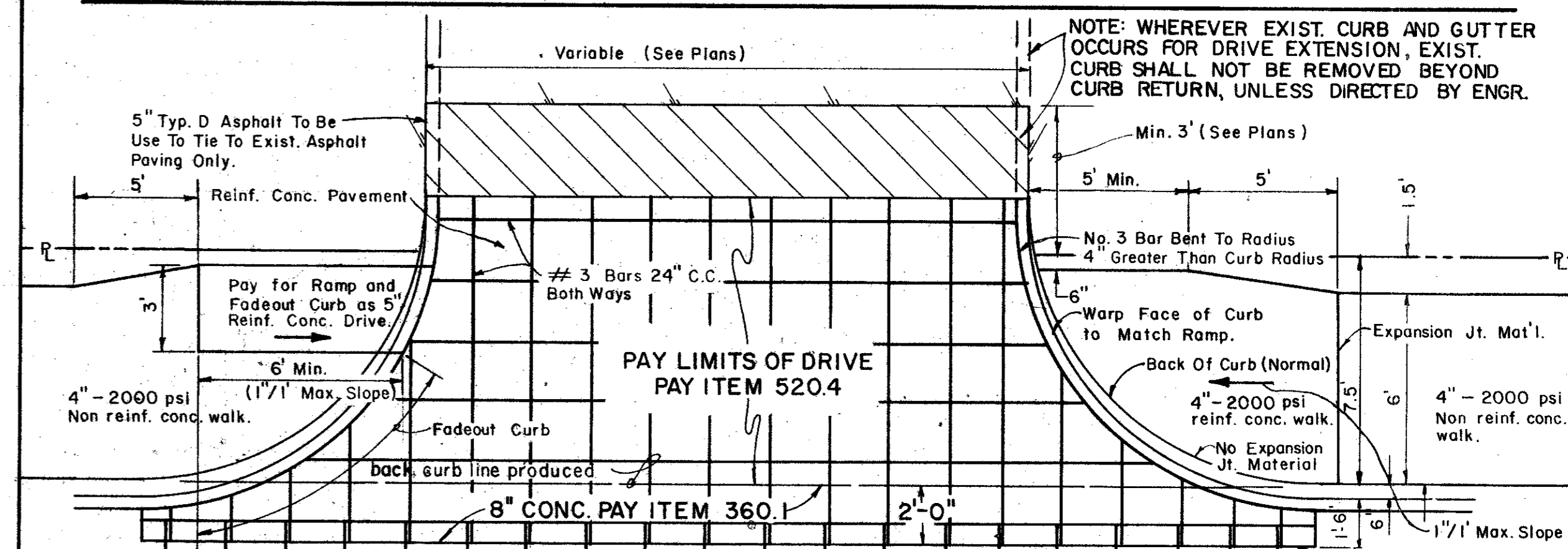
NOTE: From Sta. 21+00 to 25+50, transition from 45' width to 81' width, see plan/profile. From Sta. 37+00 to 40+50, transition from typical section to 1/4" ft. slope. From Sta. 40+50 to 46+00, slope 1/4" ft. From 46+00 to end, transition, see plan.



TYPICAL Sta. 25+50 to 37+00
DIVIDED

TYPICAL PAVING SECTION DETAILS

FOR TRANSITION, SEE PLAN/PROFILE FOR ELEVATIONS



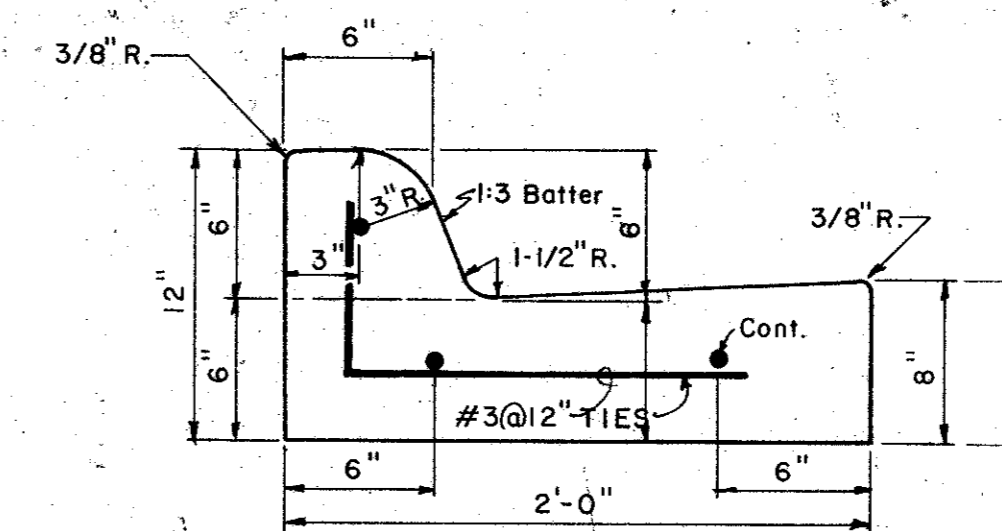
Typ. Barrier Free Ramp at Curved Drive
(where occurs - see plans)

Pavement Reinforcement Lapped 30 Dia. or No. 5 Dowel 24" Long

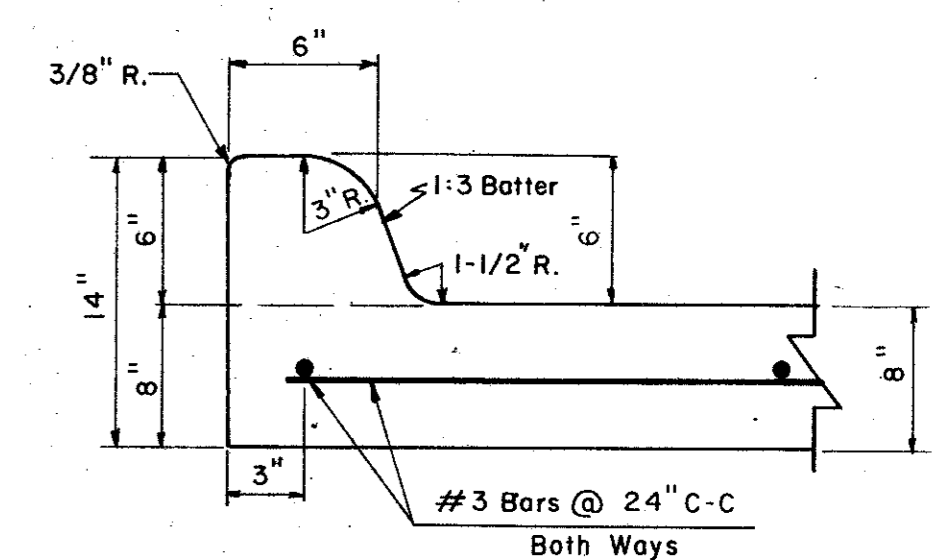
Typ. Barrier Free Ramp at Driveway
(where occurs - see plans)

(NOTE: Typ. Cross Slope All Conc. Walks Shall Be 1/4" Ft. Unless Otherwise Noted.)

DRIVEWAY PAVING DETAIL



SEPARATE CURB & GUTTER
REINFORCEMENT SHALL BE No. 5 BARS



6" INTEGRAL CURB & GUTTER DETAIL

CITY OF ADDISON
DALLAS COUNTY, TEXAS

PAVING DETAILS A

GINN, INC.
Consulting Engineers Dallas, Texas

DESIGNED - H. K. DRAWN - S. M. M. DATE - JOB No.
APPROVED - H. G. CHECKED - G. F. SCALE - NONE SHEET 15 OF