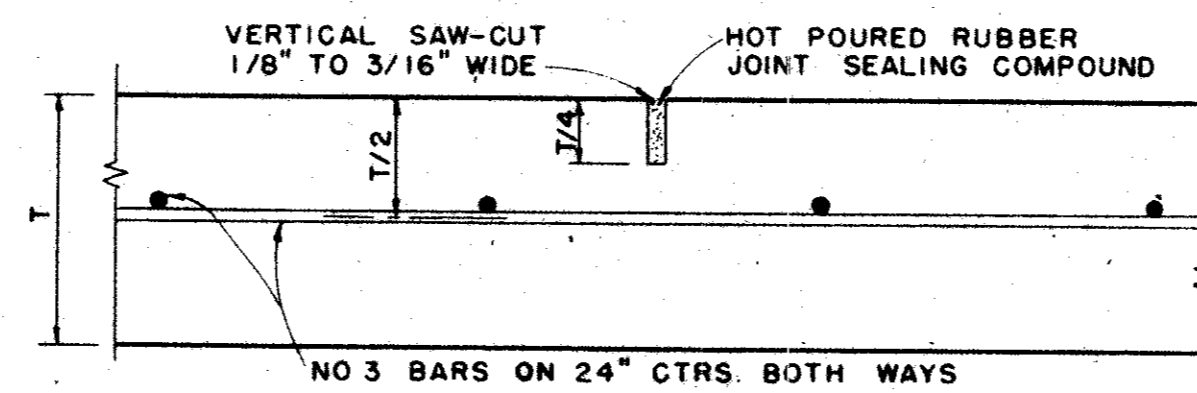


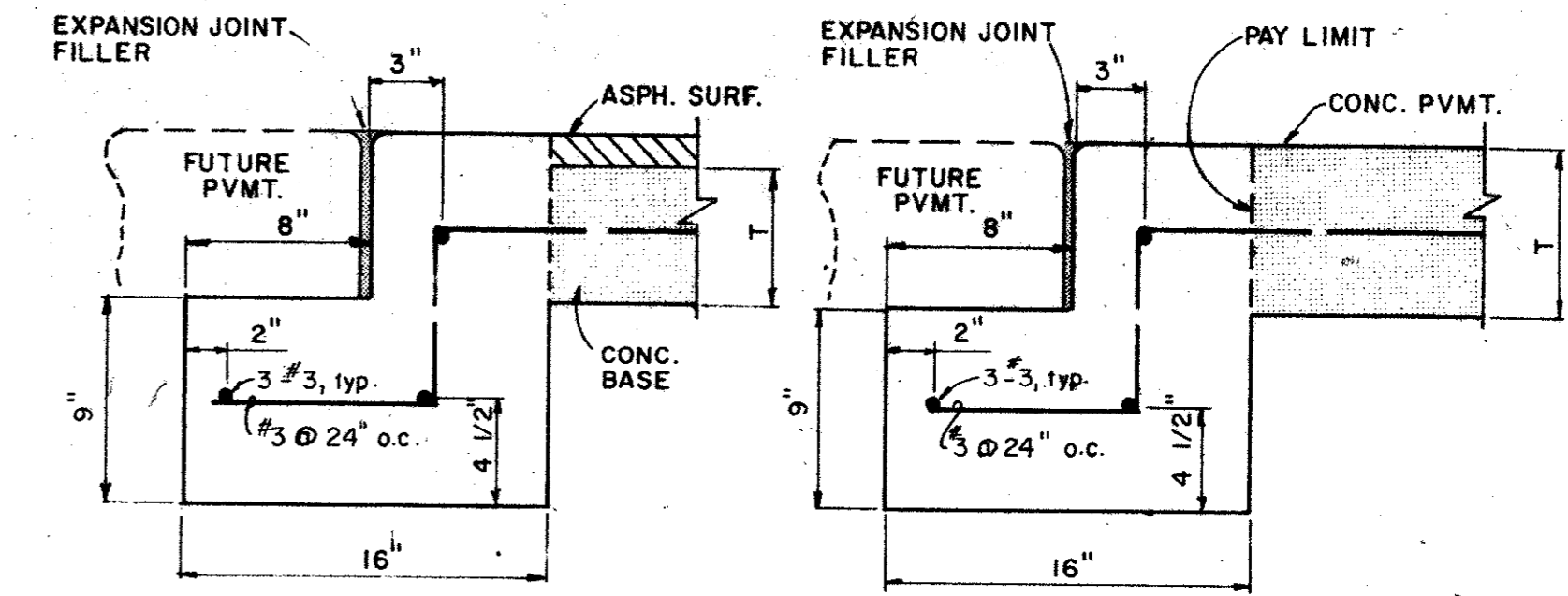
SPACING DIAGRAM FOR JOINTS

IDENTICAL FOR STREETS (CONCRETE PAVEMENT OR BASE) AND ALLEYS EXCEPT THAT EXPANSION JOINTS FOR ALLEYS SHALL BE PLACED AT THE END OF THE RETURN IN LINE WITH THE PROPERTY LINE. SPACING OF EXPANSION JOINTS SHALL NOT EXCEED 600 FEET.



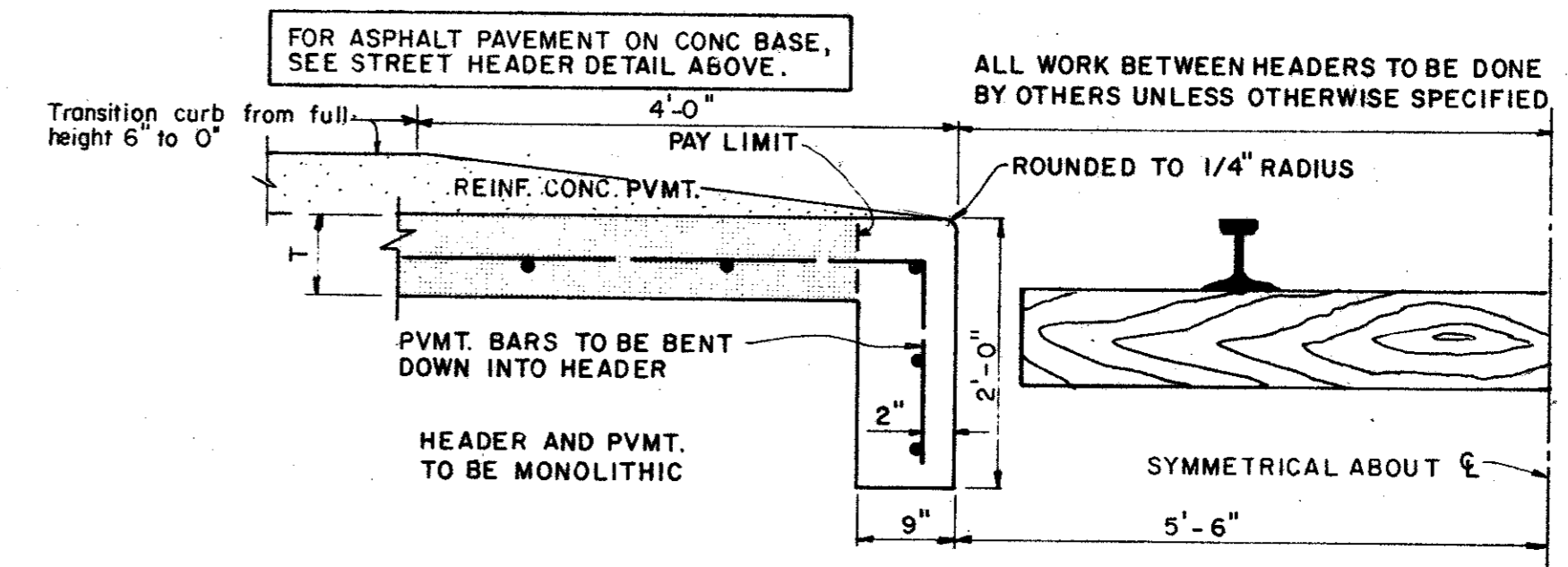
SAWED DUMMY JOINT

IDENTICAL FOR STREETS AND ALLEYS EXCEPT ALLEY LONGITUDINAL REINFORCEMENT BARS

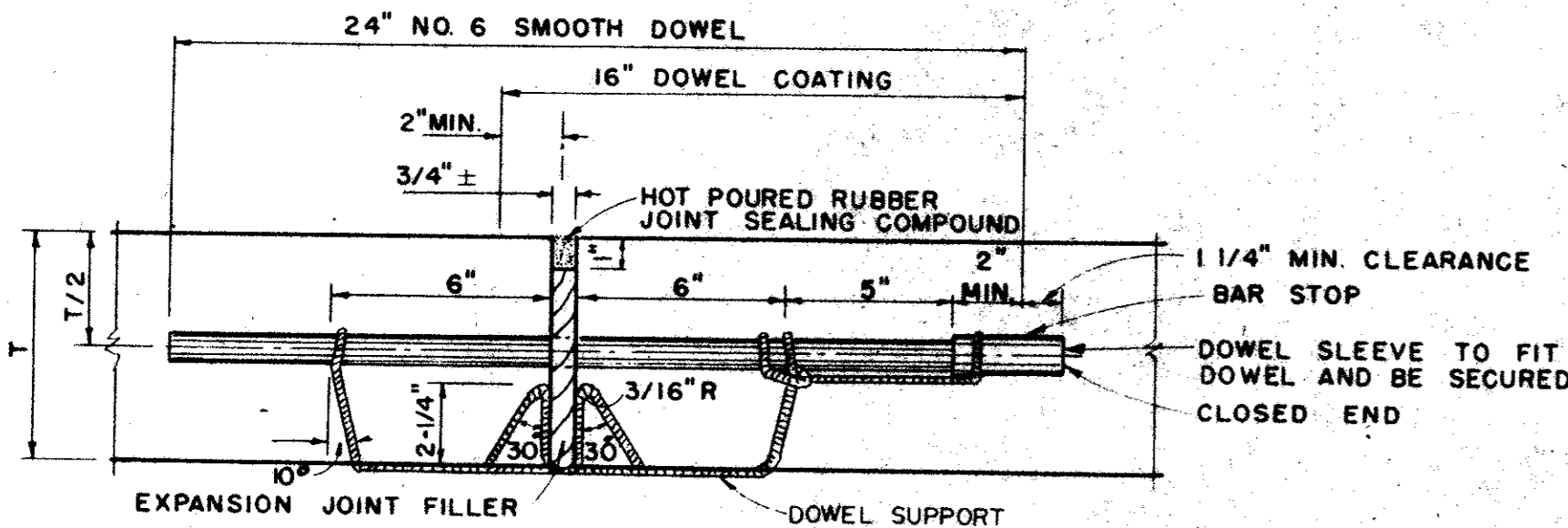


PAVEMENT BARS TO BE BENT DOWN INTO HEADER. HEADER AND PAVEMENT TO BE MONOLITHIC.

STREET HEADER

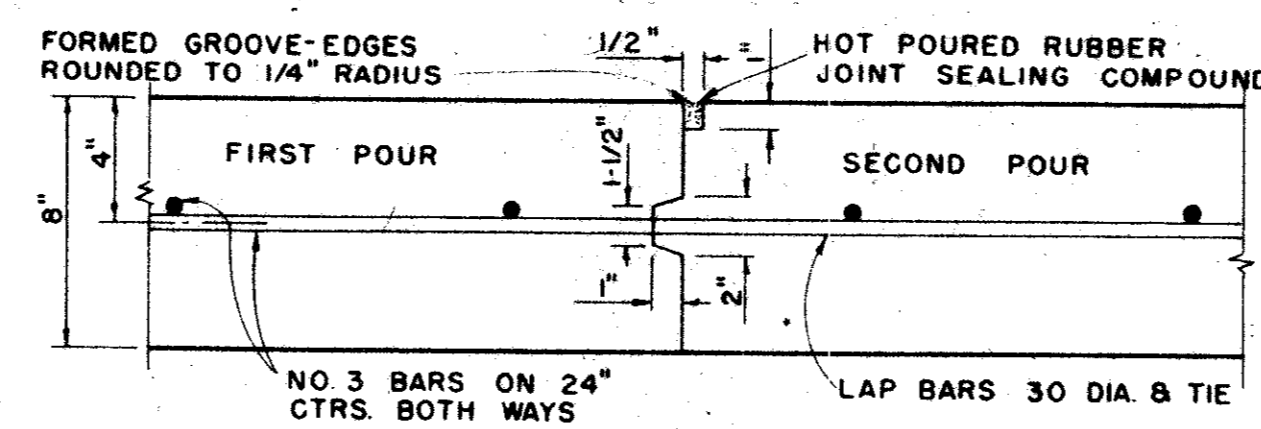


RAILROAD HEADER



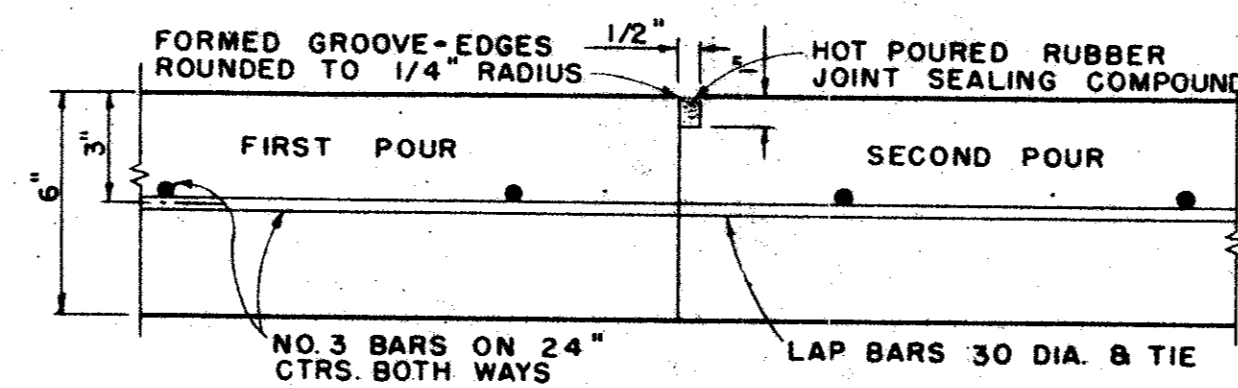
TRANSVERSE EXPANSION JOINT

IDENTICAL FOR STREETS & ALLEYS



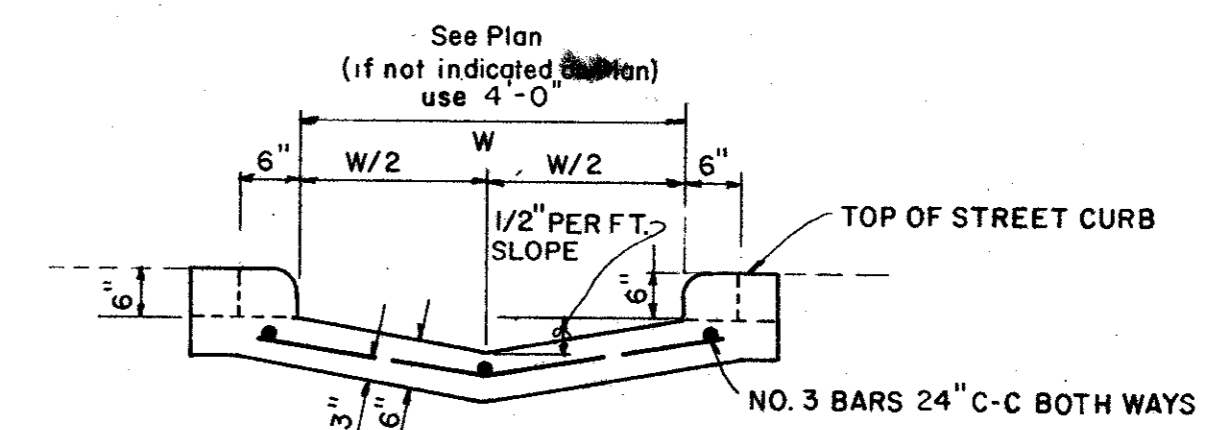
CONSTRUCTION JOINT

FOR 8" THICKNESS PAVEMENT OR BASE

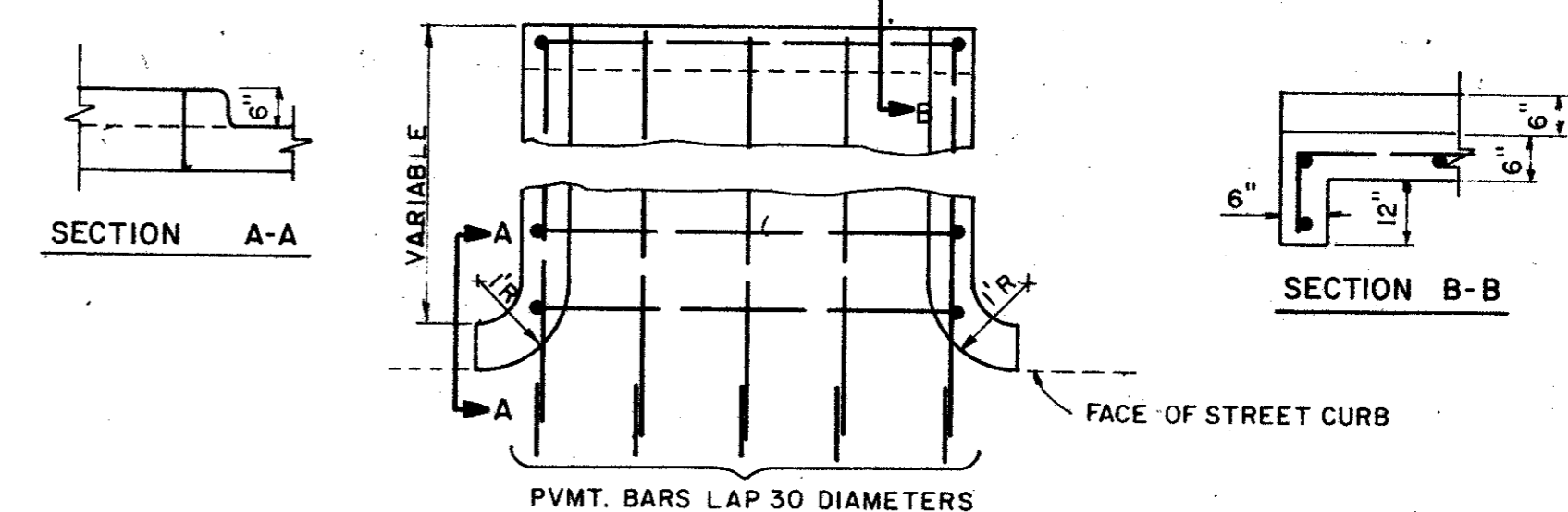


CONSTRUCTION JOINT

FOR 6" THICKNESS PAVEMENT OR BASE IDENTICAL FOR STREETS AND ALLEYS EXCEPT ALLEY LONGITUDINAL REINFORCEMENT BARS

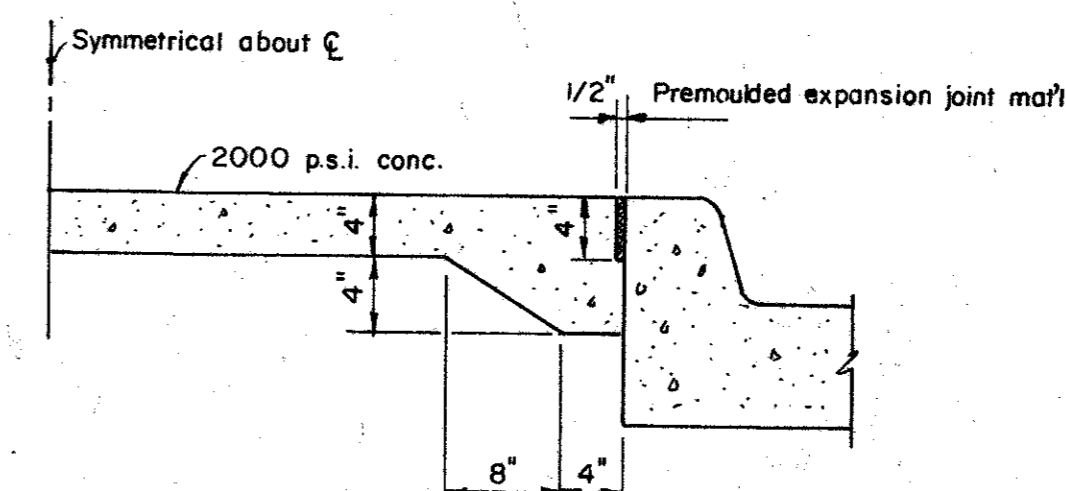


SECTION AT CURB FACE



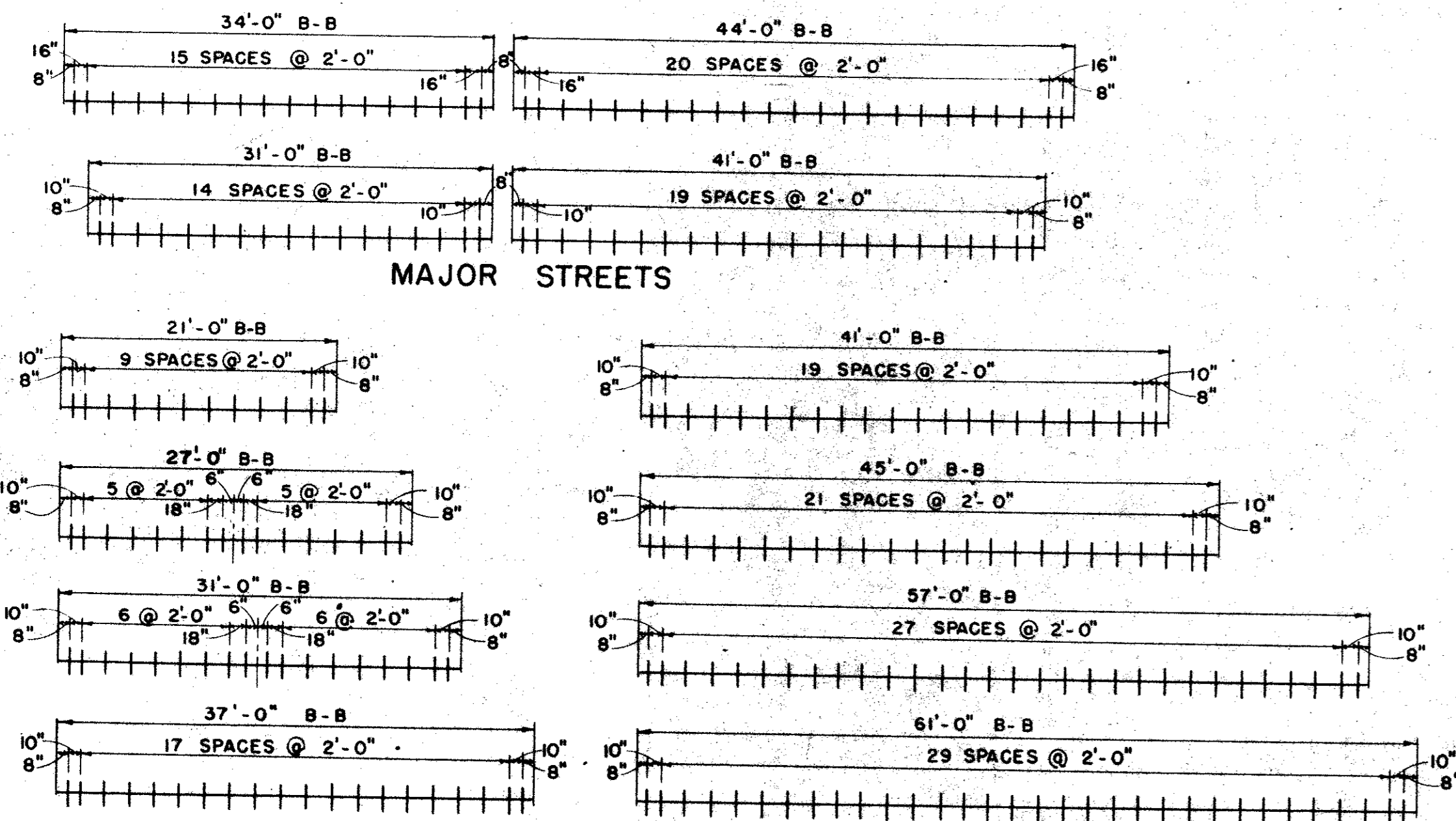
PLAN

FLUME



NON-REINFORCED MEDIAN PAVEMENT

IN ALL AREAS LESS THAN 6' BC. TO BC UNLESS OTHERWISE DIRECTED BY ENGINEER.



SPACING DIAGRAM FOR DOWELS AT EXPANSION JOINTS

CITY OF ADDISON DALLAS COUNTY, TEXAS			
PAVING DETAILS B			
GINN, INC. Consulting Engineers Dallas, Texas			
DESIGNED-H.K.	DRAWN-S.M.M.	DATE-	JOB No.
APPROVED-H.G.	CHECKED-G.F.	SCALE- NONE	SHEET 16 OF