

MATCHLINE STA 12+00

BACK OF CURB PC/PT/PRC/PCC  
SPRING VALLEY ROAD

NO	DESC	STATION	OFFSET
1	PC	10+81.35	7.00' LT
2	PT	10+57.80	1.11' LT
3	PC	10+57.80	1.10' RT
4	PT	10+81.37	7.00' RT
5	PC	7+49.89	22.21' RT
6	PT	8+11.46	22.94' RT
7	PT	9+99.87	29.00' LT
8	PI	10+33.34	47.35' LT
9	PC	10+33.37	43.90' LT
10	PT	10+48.36	29.00' LT

**LEGEND**

- PERMANENT REINFORCED CONCRETE PAVEMENT CONSTRUCTION
- CONC MEDIAN NOSE PAVEMENT
- CONC PAVEMENT



HALFE ASSOCIATES, INC.  
ENGINEERS - SURVEYORS - SCIENTISTS  
PRELIMINARY - FOR INTERIM REVIEW ONLY  
These documents are for Interim Review and not intended for Construction, Bidding, or Permit Purposes. They were prepared by, or under the supervision of:  
M.E. ROMANOWSKI P.E. 56306 AUGUST 2010

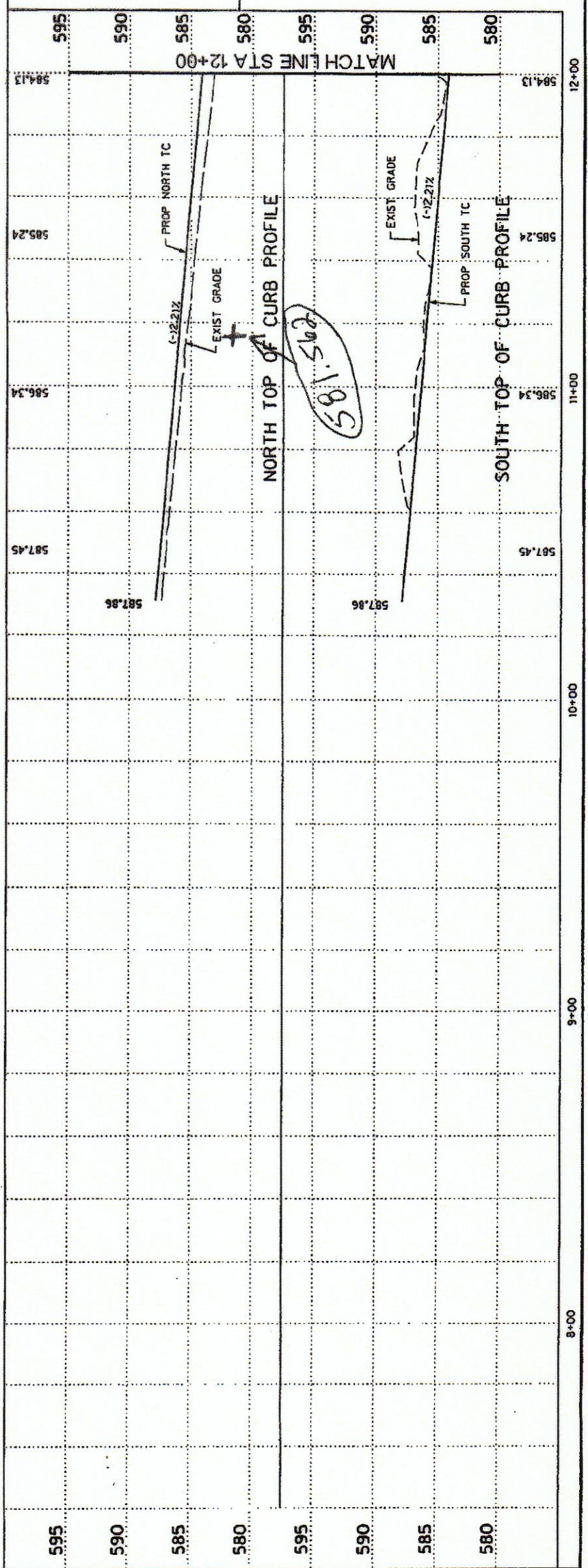
NO.	REVISION	BY	DATE

TOWN OF ADDISON  
DALLAS COUNTY, TEXAS  
SPRING VALLEY ROAD

**PAVING PLAN AND PROFILE**  
STA 7+49.89 TO 12+00

**HALFE**  
181 NORTH BOWSER ROAD, RICHARDSON, TEXAS 75081-5275  
TEL: (972) 346-6500 FAX: (972) 346-6066

PROJECT	DESIGN	DRAWN	DATE	FILE	SHEET
27530	XXX	XXX	AUGUST 2010	27530 PAVM 01	P1



MATCHLINE STA 12+00