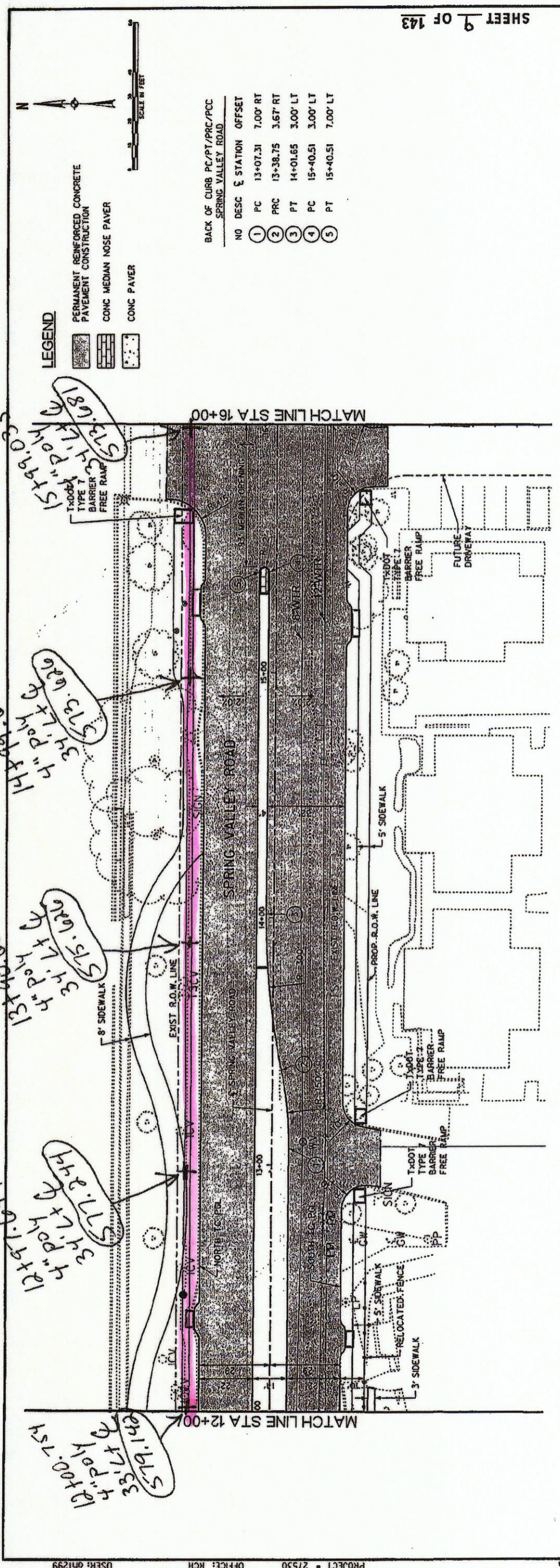


HALFF ASSOCIATES, INC.
ENGINEERS - SURVEYORS - SCIENTISTS
PRELIMINARY - FOR INTERIM REVIEW ONLY
These documents are for Interim Review and not intended for Construction, Bidding, or Permit Purposes. They were prepared by, or under the supervision of:
M.E. ROMANOWSKI PEP AUGUST 2010

PROJECT	DESIGN	DRAWN	DATE	FILE	SHEET
27530	XXX	XXX	AUGUST 2010	27530_PAV02	P2

TOWN OF ADDISON
DALLAS COUNTY, TEXAS
SPRING VALLEY ROAD
PAVING PLAN AND PROFILE
STA 12+00 TO 16+00



DATE: 8/11/2010 TIME: 2:59:26 PM FILE: 27530_PAVM_02.dgn PROJECT = 27530 OFFICE: RCH USER: dm1299

LEGEND
 PERMANENT REINFORCED CONCRETE PAVEMENT CONSTRUCTION
 CONC MEDIAN NOSE PAVER
 CONC PAVER

SCALE IN FEET

SPRING VALLEY ROAD
 MATCH LINE STA 12+00
 MATCH LINE STA 16+00

12+00.754
 12+97.697
 13+00.682
 13+99.636
 14+99.637
 15+99.637
 16+00.637