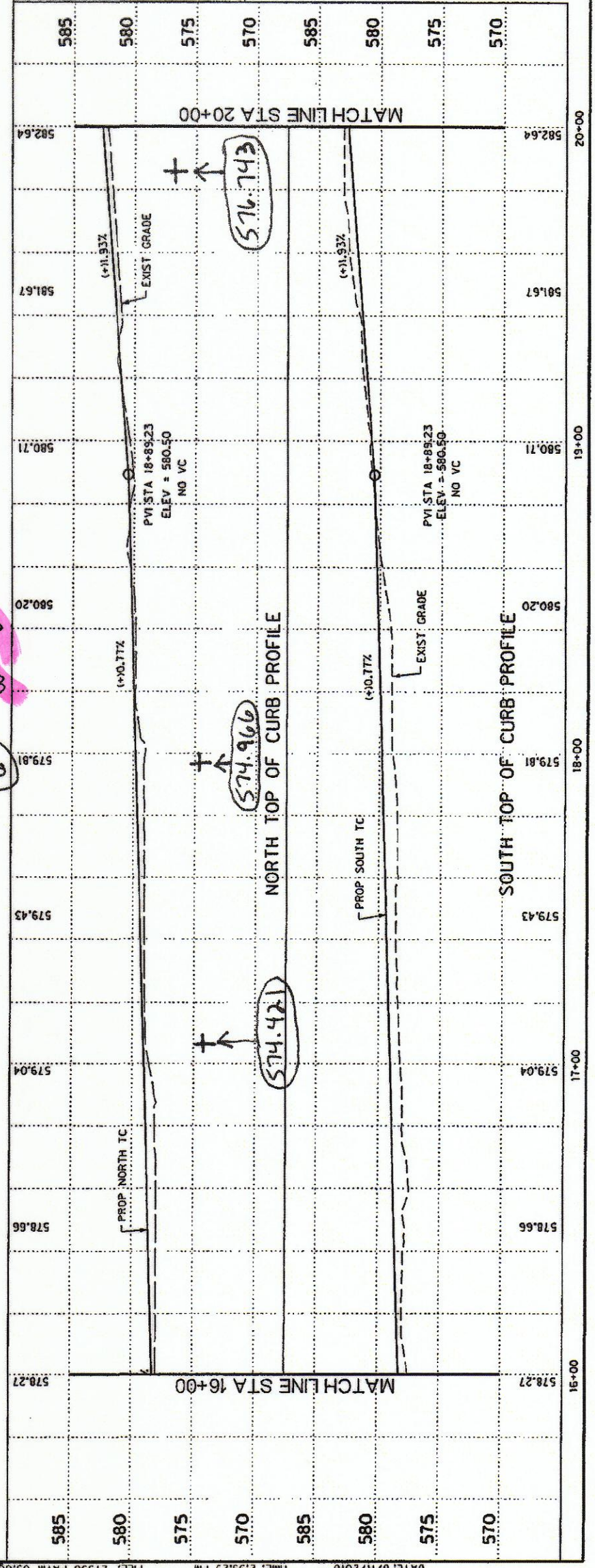
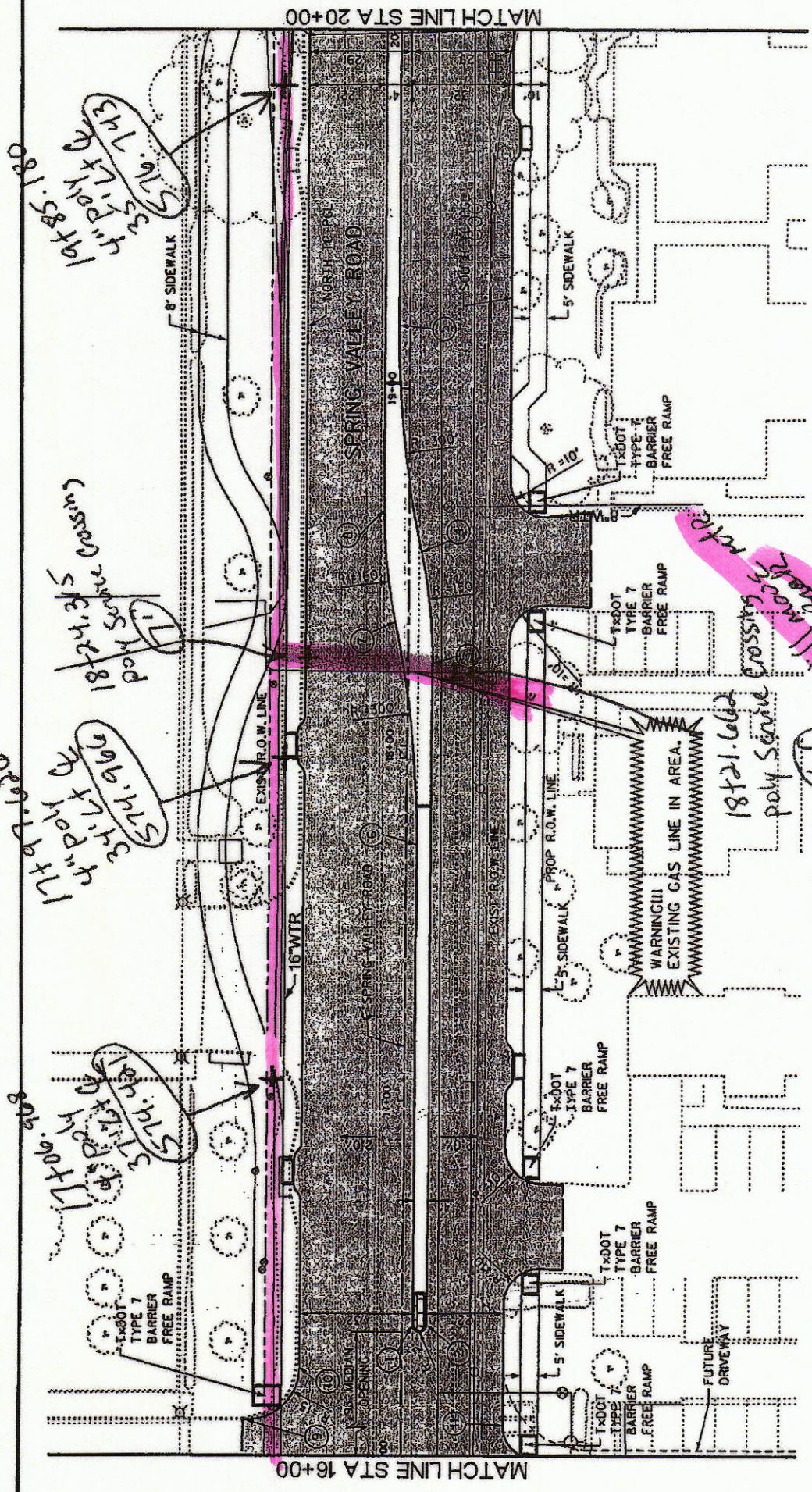


BACK OF CURB PC/PT/PRC/PCC  
SPRING VALLEY ROAD

NO	DESC	STATION	OFFSET
1	PC	16+37.20	3.00' RT
2	PT	16+37.20	7.00' RT
3	PC	18+23.31	7.00' RT
4	PRC	18+54.76	3.67' RT
5	PT	19+17.65	3.00' LT
6	PC	17+72.08	3.00' RT
7	PRC	18+34.97	3.67' LT
8	PT	18+66.42	7.00' LT
9	PC	16+10.34	44.13' LT
10	PT	16+25.34	29.00' LT
11	PT	16+08.89	29.00' RT



HALFF ASSOCIATES, INC.  
ENGINEERS - SURVEYORS - SCIENTISTS  
PRELIMINARY - FOR INTERIM REVIEW ONLY  
These documents are for Interim Review and not intended for Construction, Bidding, or Permit Purposes. They were prepared by, or under the supervision of:

M.E. ROMANOWSKI P.E. AUGUST 2010  
D.B.H.

NO.	REVISION	DATE	BY

TOWN OF ADDISON  
DALLAS COUNTY, TEXAS  
SPRING VALLEY ROAD

PAVING PLAN AND PROFILE  
STA 16+00 TO 20+00

HALFF  
1501 NORTH GARDNER ROAD, IRVING, TEXAS 75038-2278  
TEL: (972) 241-0000 FAX: (972) 241-0006

PROJECT	DESIGN	DRAWN	DATE	FILE
27530	XXX	XXX	AUGUST 2010	27530 PAVM03
SHEET				P3