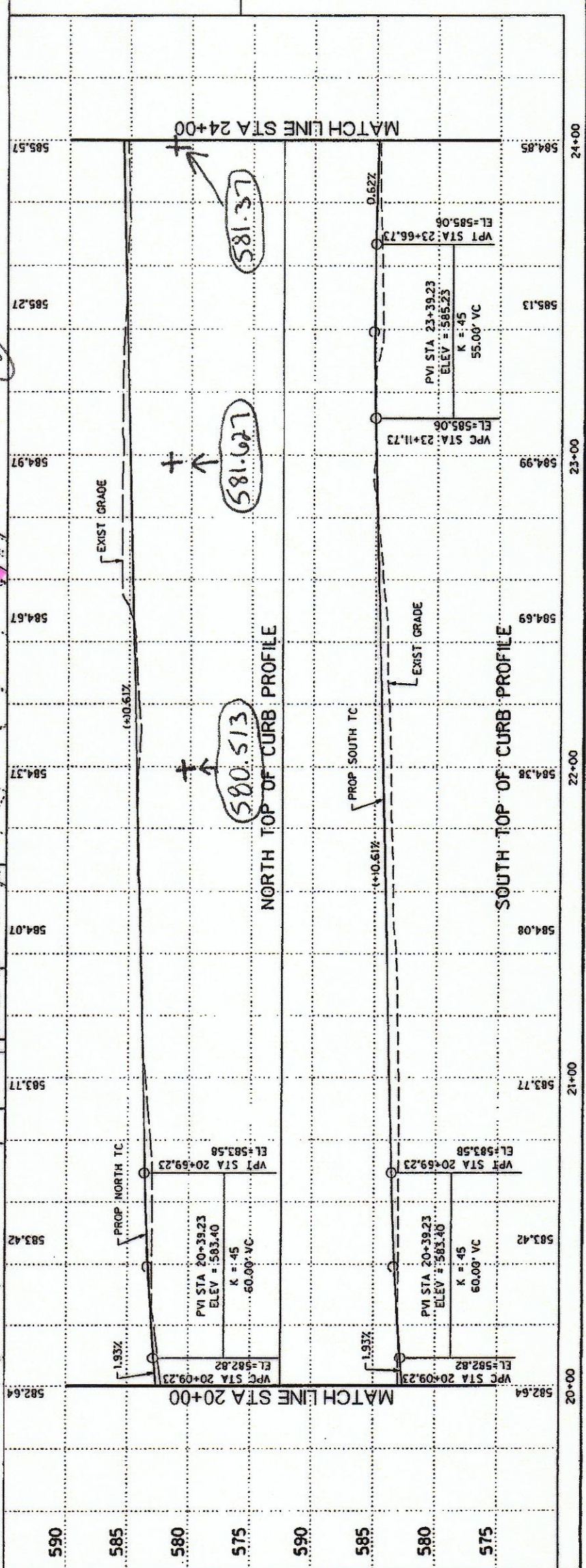
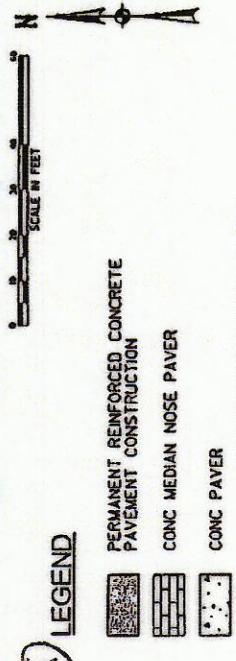


SHEET 11 OF 143

NO	DESC	STATION	OFFSET	NO	DESC	STATION	OFFSET
1	PC	20+65.69	7.00' LT	21	PC	21+29.19	79.14' RT
2	PT	20+65.69	3.00' LT	22	PC	21+64.97	29.00' RT
3	PC	21+83.65	3.00' RT	23	PT	21+54.42	38.03' RT
4	PT	21+83.65	7.00' RT	24	PC	21+50.40	82.20' RT
5	PCC	20+58.14	7.00' LT	25	PT	21+56.54	84.02' RT
6	PCC	20+58.14	3.00' LT	26	PC	22+14.20	34.68' RT
7	PC	20+38.05	29.00' LT	27	PT	22+12.80	29.00' RT
8	PT	20+91.11	78.63' LT	28	PC	22+87.48	40.00' RT
9	PC	21+18.27	88.59' LT	29	PCC	22+17.86	3.00' RT
10	PC	21+43.37	86.72' LT	30	PCC	22+17.86	7.00' RT
11	PT	21+30.58	60.68' LT	31	PT	21+57.83	137.48' RT
12	PT	21+27.14	60.92' LT	32	PI	21+53.55	48.00' RT
13	PI	21+65.09	84.86' LT	33	PI	21+69.24	49.09' RT
14	PC	21+64.28	71.49' LT	34	PI	21+78.48	58.75' RT
15	PT	21+91.95	40.00' LT	35	PI	21+64.34	38.75' RT
16	PC	20+60.26	29.00' RT	36	PI	21+86.40	52.03' RT
17	PT	20+88.23	59.58' RT	37	PI	21+74.77	39.95' RT
18	PT	21+22.03	49.47' RT	38	PI	21+75.34	29.00' RT
19	PT	21+18.21	49.20' RT				
20	PC	21+07.82	77.58' RT				



HALFF ASSOCIATES, INC.
ENGINEERS - SURVEYORS - SCIENTISTS
PRELIMINARY - FOR INTERIM REVIEW ONLY
These documents are for Interim Review and not intended for Construction, Bidding, or Permit Purposes. They were prepared by, or under the supervision of:
M.E. ROMANOWSKI P.E. AUGUST 2010 DSIB

NO.	REVISION	BY	DATE

TOWN OF ADDISON
DALLAS COUNTY, TEXAS
SPRING VALLEY ROAD

PROJECT DESIGN DRAWN DATE AUGUST 2010 SHEET P4
27530 XXX XXX 27530 PAVM04

HALFF
1301 NORTH HONKER ROAD, RICHARDSON, TEXAS 75081-2075
TEL: (972) 348-8888 FAX: (972) 348-8888