

LEGEND

- PERMANENT REINFORCED CONCRETE PAVEMENT CONSTRUCTION
- CONC MEDIAN NOSE PAYER
- CONC PAYER



BACK OF CURB PC/PT/PRC/PCC  
SPRING VALLEY ROAD

NO	DESC	STATION	OFFSET
1	PC	24+65.59	3.00' RT
2	PT	24+65.59	7.00' RT
3	PI	24+25.83	39.68' LT
4	PI	24+26.02	39.84' RT

HALFF ASSOCIATES, INC.  
ENGINEERS - SURVEYORS - SCIENTISTS  
PRELIMINARY - FOR INTERIM REVIEW ONLY  
These documents are for Interim Review and not intended for Construction, Bidding, or Permit Purposes. They were prepared by, or under the supervision of:

M.E. ROMANOWSKI      56306      AUGUST 2010  
PEF      DBA

PROJECT	DESIGN	DRAWN	DATE	FILE	SHEET
27530	XXX	XXX	AUGUST 2010	27530 PAVM05	P5

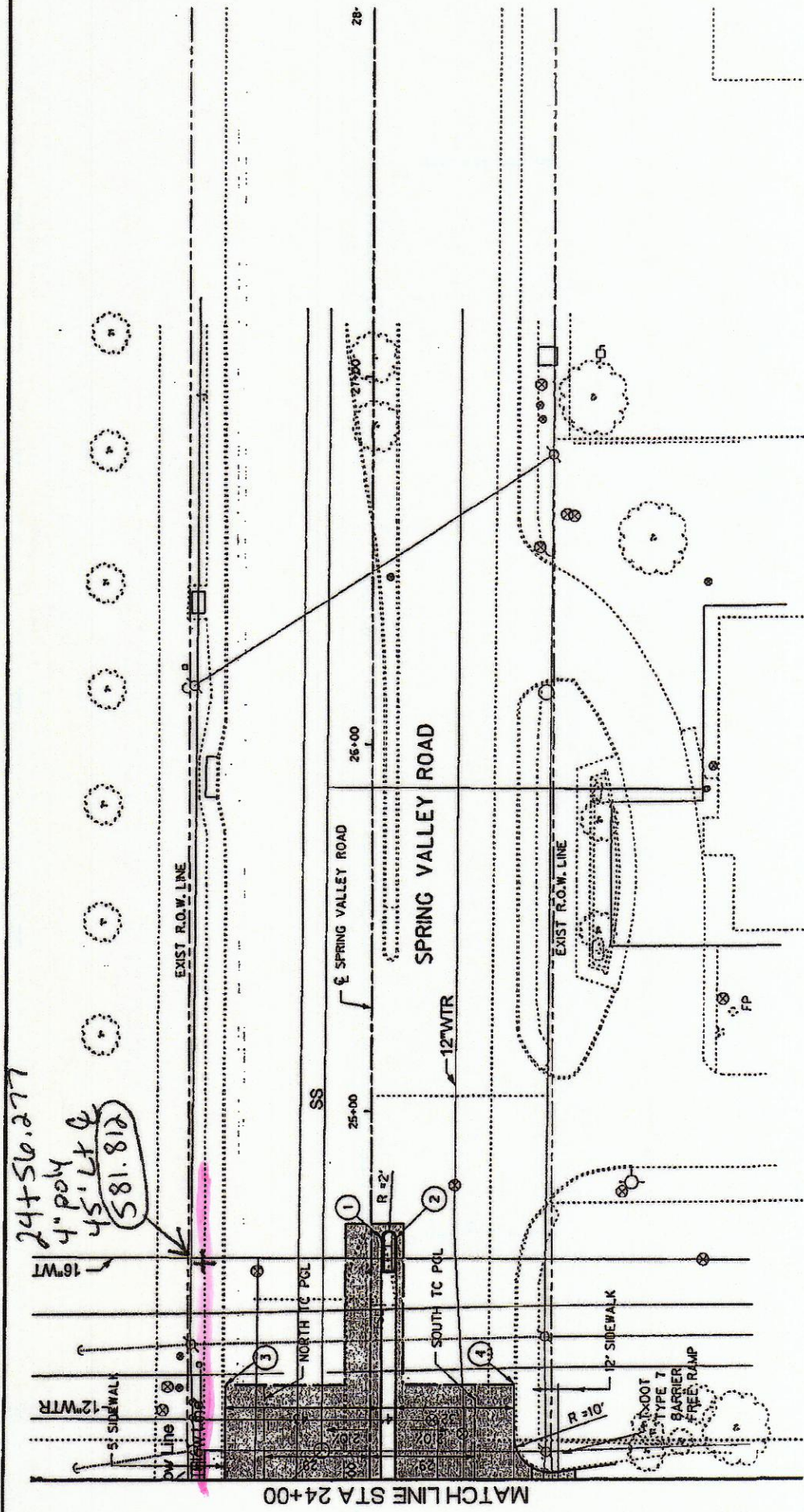
REVISION

NO.	BY	DATE

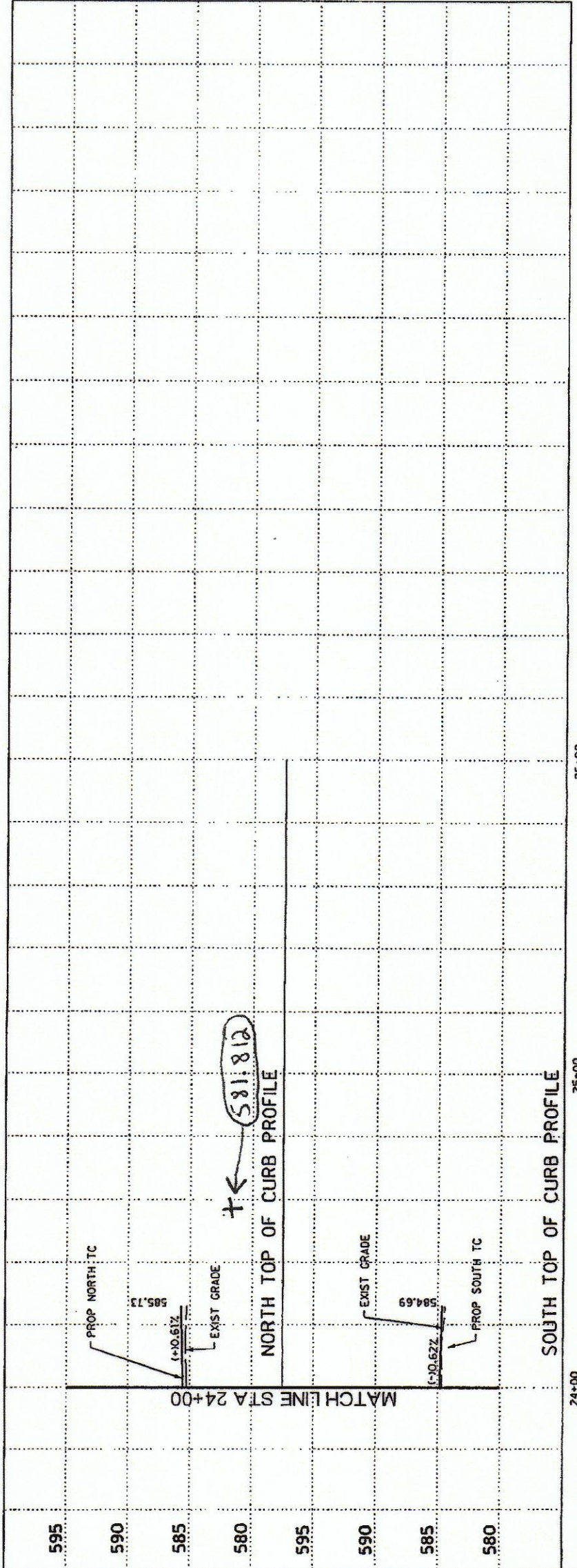
TOWN OF ADDISON  
DALLAS COUNTY, TEXAS  
SPRING VALLEY ROAD

PAVING PLAN AND PROFILE  
STA 24+00 TO 26+11.52

HALFF  
5811 NORTH SCHUBERT ROAD, RICHARDSON, TEXAS 75082  
TEL: (972) 344-6200



24+56.277  
4" poly  
45" Lt  
581.812



24+00      25+00      26+00