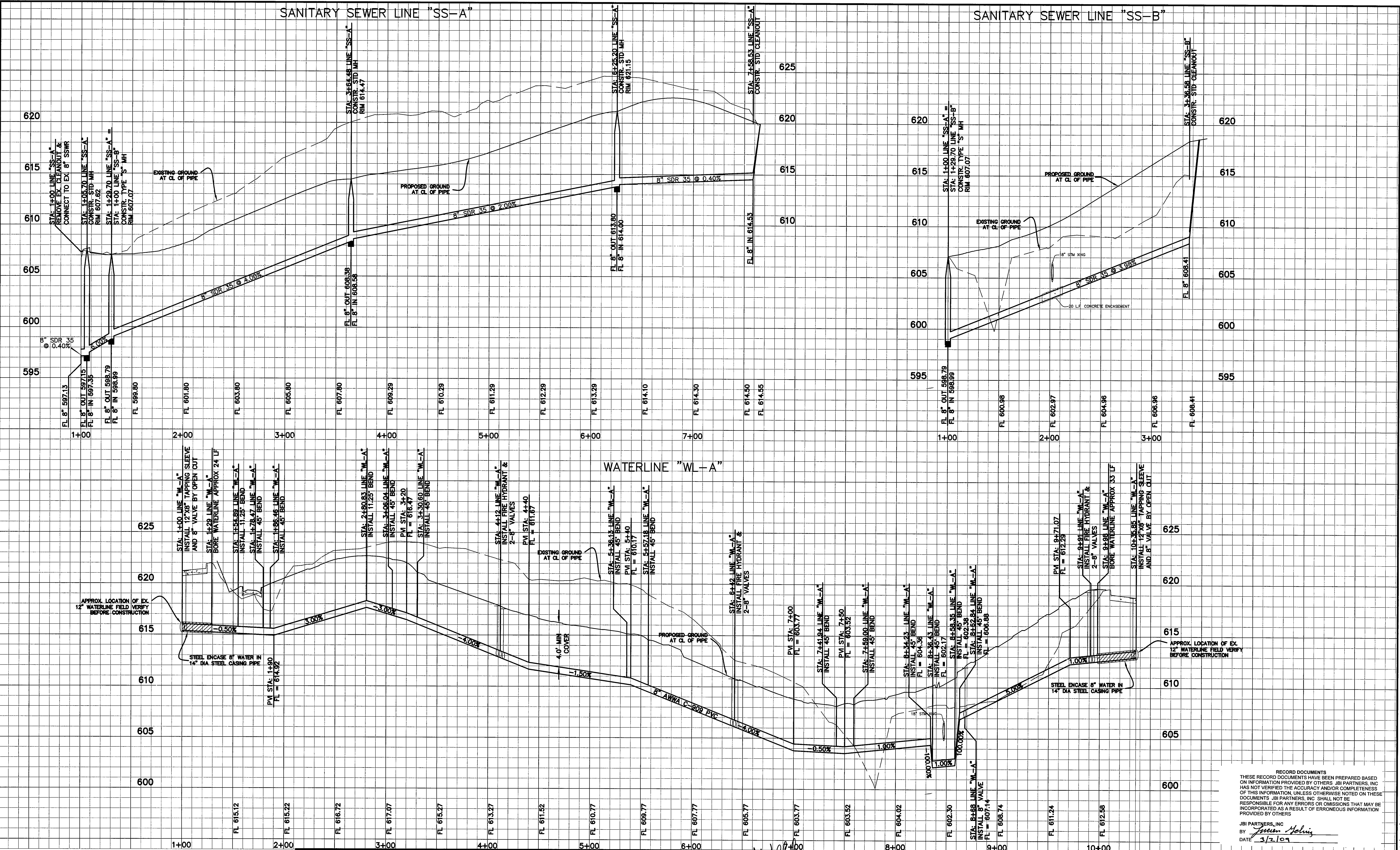


SANITARY SEWER LINE "SS-A"

SANITARY SEWER LINE "SS-B"

WATERLINE "WL-A"



BENCHMARKS
 BM #1 - CITY OF DALLAS WATER DEPARTMENT BENCHMARK, NORTHEAST CORNER OF CELESTIAL ROAD AND MONTFORT DRIVE, SQUARE CUT ON CONCRETE BASE OF 6 FOOT BRICK WALL ELEVATION = 626.81'
 BM #2 - SOUTHEAST CORNER OF CELESTIAL ROAD AND MONTFORT DRIVE, "X" CUT IN CONCRETE SIDEWALK, APPROXIMATELY 22 FEET NORTH OF THE CURB RETURN ON MONTFORT DRIVE ELEVATION = 624.51'

NO.	REVISIONS DURING CONSTRUCTION	BY	DATE	NO.	REVISIONS DURING PLAN REVIEW	BY	DATE

The seal appearing on this document was authorized by Steven S. Crauford, P.E. 92677. Alteration of a sealed document without proper notification to the responsible engineer is an offense under the Texas Engineering Practice Act

8/10/06

Jones & Boyd, Inc.
 17090 Dallas Parkway, Suite 200
 Dallas, Texas 75248
 972 248 7676 office
 972 248 1414 fax
 www.jones-boyd.com

- Engineering
- Surveying
- Planning
- Landscape Architecture
- Construction Management

WATER & SANITARY SEWER PROFILES

STANFORD COURT VILLAS
 Town of Addison, Dallas County, Texas

PROJECT NO. **CDC004**
 SHEET NO. **9**

RECORD DOCUMENTS
 THESE RECORD DOCUMENTS HAVE BEEN PREPARED BASED ON INFORMATION PROVIDED BY OTHERS. JBI PARTNERS, INC. HAS NOT VERIFIED THE ACCURACY AND/OR COMPLETENESS OF THIS INFORMATION, UNLESS OTHERWISE NOTED ON THESE DOCUMENTS. JBI PARTNERS, INC. SHALL NOT BE RESPONSIBLE FOR ANY ERRORS OR OMISSIONS THAT MAY BE INCORPORATED AS A RESULT OF ERRONEOUS INFORMATION PROVIDED BY OTHERS.

JBI PARTNERS, INC.
 BY *Steven Helwig*
 DATE *8/2/06*