

**LEGEND**

- 24" STOP SIGN (UNLESS OTHERWISE NOTED)
- SIGN AND POST LOCATION (TRAFFIC SIGN AND/OR STREET NAME SIGN)
- 12' TALL STREET LIGHT(TYP) (DESIGN AND FINAL LAYOUT BY FRANCHISE UTILITY)

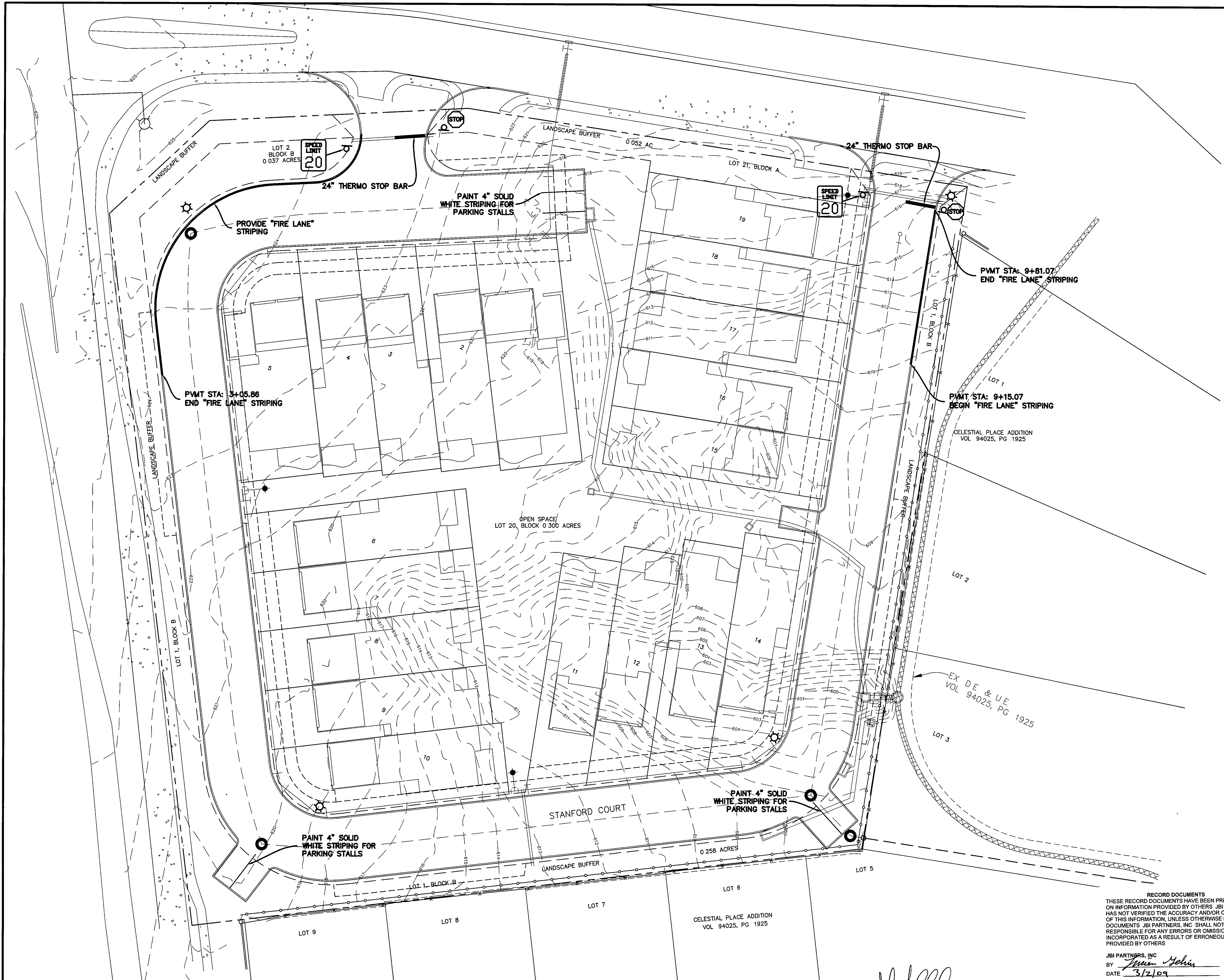
**SIGNAGE & LIGHTING SCHEDULE**

DESCRIPTION	QUANTITY
24" STOP / STREET NAME BLADES	2/4
20 MPH SPEED LIMIT SIGN (24" x 30")	2
STREET LIGHT ON 12' POLE	4
POLE / STREET NAME BLADES	--

- TRAFFIC CONTROL NOTES:**
- ALL SIGNAGE, BARRICADES, AND PAVEMENT MARKINGS SHALL BE IN ACCORDANCE WITH THE LATEST REVISION OF THE TEXAS MANUAL ON UNIFORM TRAFFIC CONTROL DEVICES AND THE STANDARD HIGHWAY SIGN DESIGN FOR TEXAS MANUAL (1980)
  - LOCATIONS SHOWN FOR SIGNAGE AND PAVEMENT MARKINGS ARE APPROXIMATE. FINAL LOCATIONS MAY CHANGE DUE TO POST CONSTRUCTION CONDITIONS AND PRESENCE OF OTHER PHYSICAL FEATURES. FINAL LOCATION OF ALL TRAFFIC CONTROL DEVICES SHALL BE FIELD VERIFIED WITH CITY PRIOR TO INSTALLATION
  - ALL PAVEMENT MARKINGS OTHER THAN BUTTONS SHALL BE THERMOPLASTIC UNLESS OTHERWISE NOTED
  - ALL SIGNS SHALL BE HIGH INTENSITY AND THE SIZES SHALL BE STANDARD UNLESS OTHERWISE NOTED
  - FOR STOP SIGNS THAT WILL ACCEPT FUTURE STREET SIGNS, EXTEND POST ABOVE STOP SIGN SO THAT TWO (2) HOLES ARE AVAILABLE FOR MOUNTING (FOR ALL OTHERS, POST SHALL NOT EXTEND ABOVE SIGN)
  - CHANGES TO TYPICAL SIGN POST LOCATION MAY BE MADE AT ENGINEER'S DISCRETION
  - STREET NAME SIGNS AND TRAFFIC SIGNAGE TO BE PAID FOR BY THE DEVELOPER AND INSTALLED BY THE TOWN OF ADDISON

RECORD DOCUMENTS  
 THESE RECORD DOCUMENTS HAVE BEEN PREPARED BASED ON INFORMATION PROVIDED BY OTHERS. JBI PARTNERS, INC HAS NOT VERIFIED THE ACCURACY AND/OR COMPLETENESS OF THIS INFORMATION. UNLESS OTHERWISE NOTED ON THESE DOCUMENTS, JBI PARTNERS, INC SHALL NOT BE RESPONSIBLE FOR ANY ERRORS OR OMISSIONS THAT MAY BE INCORPORATED AS A RESULT OF ERRONEOUS INFORMATION PROVIDED BY OTHERS.

JBI PARTNERS, INC  
 BY *Steven S. Crauford*  
 DATE 5/12/07



**BENCHMARKS**

BM #1 - CITY OF DALLAS WATER DEPARTMENT BENCHMARK, NORTHEAST CORNER OF CELESTIAL ROAD AND MONTFORT DRIVE, SQUARE CUT ON CONCRETE BASE OF 6 FOOT BRICK WALL ELEVATION = 626.81'

BM #2 - SOUTHEAST CORNER OF CELESTIAL ROAD AND MONTFORT DRIVE, "X" CUT IN CONCRETE SIDEWALK, APPROXIMATELY 22 FEET NORTH OF THE CURB RETURN ON MONTFORT DRIVE ELEVATION = 624.51'

NO.	REVISIONS DURING CONSTRUCTION	BY	DATE	NO.	REVISIONS DURING PLAN REVIEW	BY	DATE
1.	REVISED STREET LIGHT LOCATION	LJG	5/17/07	1.	REVISED PER CITY COMMENTS	LJG	7/28/08

The seal appearing on this document was authorized by Steven S. Crauford, P.E. 92677. Alteration of a sealed document without proper notification to the responsible engineer is an offense under the Texas Engineering Practice Act.

*Steven S. Crauford*  
 STEVEN S. CRAUFORD  
 92677  
 LICENSED PROFESSIONAL ENGINEER  
 5/17/07

**Jones & Boyd, Inc.**  
 17090 Dallas Parkway, Suite 200  
 Dallas, Texas 75248  
 972.248.7676 office  
 972.248.1414 fax  
 www.jones-boyd.com

**SIGNAGE, STRIPING & LIGHTING PLAN**

PROJECT NO. CDC004

**STANFORD COURT VILLAS**

Town of Addison, Dallas County, Texas

SHEET NO. 10

Plotted by: Igehring Plot Date: 5/7/2007 3:58 PM

Drawing: H:\Projects\CDC004\dwg\CDC004SIGN.dwg Saved By: Igehring Save Time: 5/7/2007 3:58 PM