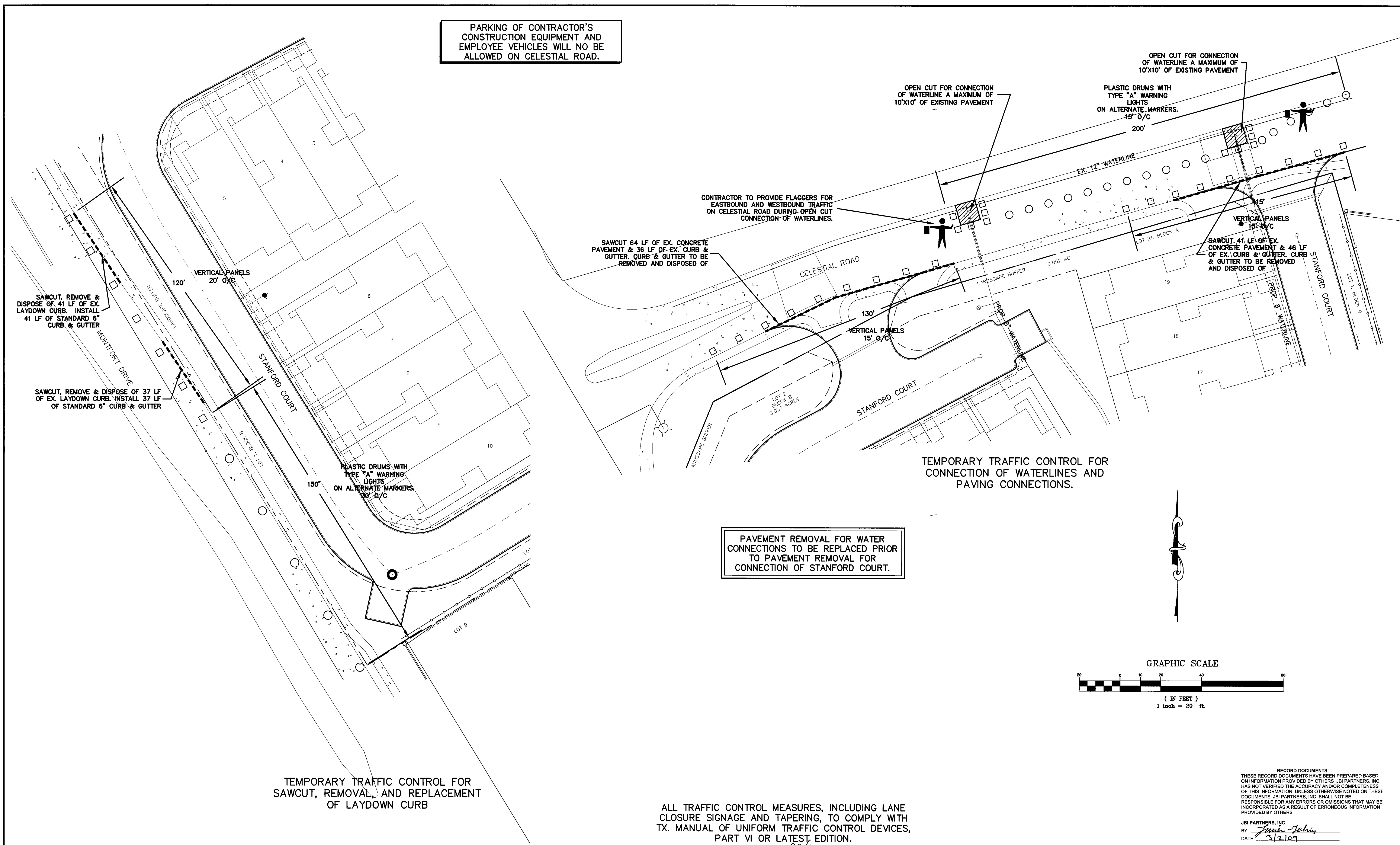


PARKING OF CONTRACTOR'S CONSTRUCTION EQUIPMENT AND EMPLOYEE VEHICLES WILL NOT BE ALLOWED ON CELESTIAL ROAD.

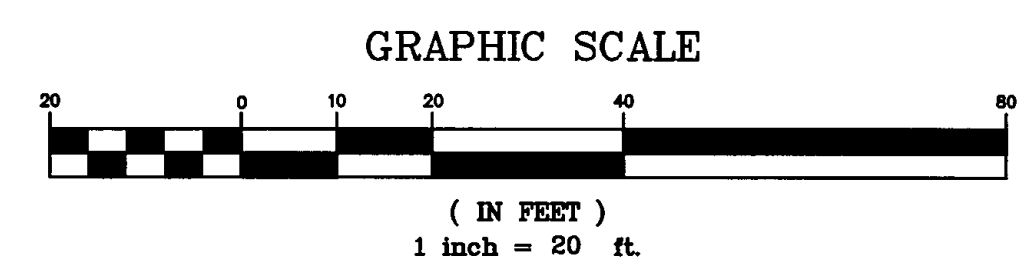


PAVEMENT REMOVAL FOR WATER CONNECTIONS TO BE REPLACED PRIOR TO PAVEMENT REMOVAL FOR CONNECTION OF STANFORD COURT.

TEMPORARY TRAFFIC CONTROL FOR CONNECTION OF WATERLINES AND PAVING CONNECTIONS.

TEMPORARY TRAFFIC CONTROL FOR SAWCUT, REMOVAL, AND REPLACEMENT OF LAYDOWN CURB

ALL TRAFFIC CONTROL MEASURES, INCLUDING LANE CLOSURE SIGNAGE AND TAPERING, TO COMPLY WITH TX. MANUAL OF UNIFORM TRAFFIC CONTROL DEVICES, PART VI OR LATEST EDITION.



RECORD DOCUMENTS
 THESE RECORD DOCUMENTS HAVE BEEN PREPARED BASED ON INFORMATION PROVIDED BY OTHERS. JBI PARTNERS, INC HAS NOT VERIFIED THE ACCURACY AND/OR COMPLETENESS OF THIS INFORMATION, UNLESS OTHERWISE NOTED ON THESE DOCUMENTS. JBI PARTNERS, INC SHALL NOT BE RESPONSIBLE FOR ANY ERRORS OR OMISSIONS THAT MAY BE INCORPORATED AS A RESULT OF ERRONEOUS INFORMATION PROVIDED BY OTHERS

JBI PARTNERS, INC
 BY *Steve Tehin*
 DATE 5/2/09

BENCHMARKS
 BM #1 - CITY OF DALLAS WATER DEPARTMENT BENCHMARK, NORTHEAST CORNER OF CELESTIAL ROAD AND MONTFORT DRIVE, SQUARE CUT ON CONCRETE BASE OF 6 FOOT BRICK WALL ELEVATION = 626.81'
 BM #2 - SOUTHEAST CORNER OF CELESTIAL ROAD AND MONTFORT DRIVE, "X" CUT IN CONCRETE SIDEWALK, APPROXIMATELY 22 FEET NORTH OF THE CURB RETURN ON MONTFORT DRIVE ELEVATION = 624.51'

NO.	REVISIONS DURING CONSTRUCTION	BY	DATE	NO.	REVISIONS DURING PLAN REVIEW	BY	DATE
				1.	REVISED PER CITY COMMENTS	LJG	7/28/08

Professional Engineer Seal for Steven S. Crauford, State of Texas, License No. 92677, dated 8/10/06.

JB Jones & Boyd, Inc.
 17090 Dallas Parkway, Suite 200
 Dallas, Texas 75248
 972.248.7676 office
 972.248.1414 fax
 www.jones-boyd.com

- Engineering
- Surveying
- Planning
- Landscape Architecture
- Construction Management

TRAFFIC CONTROL PLAN
STANFORD COURT VILLAS
 Town of Addison, Dallas County, Texas

PROJECT NO
CDC004
 SHEET NO
11