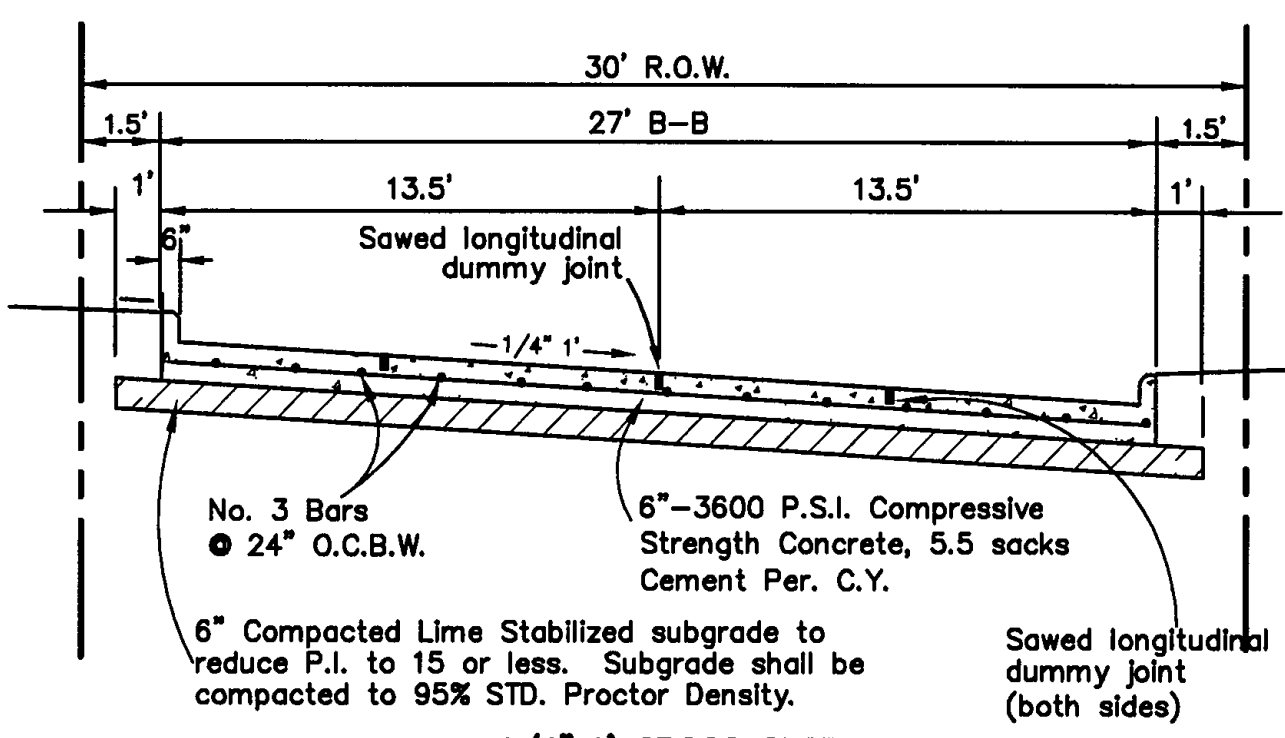
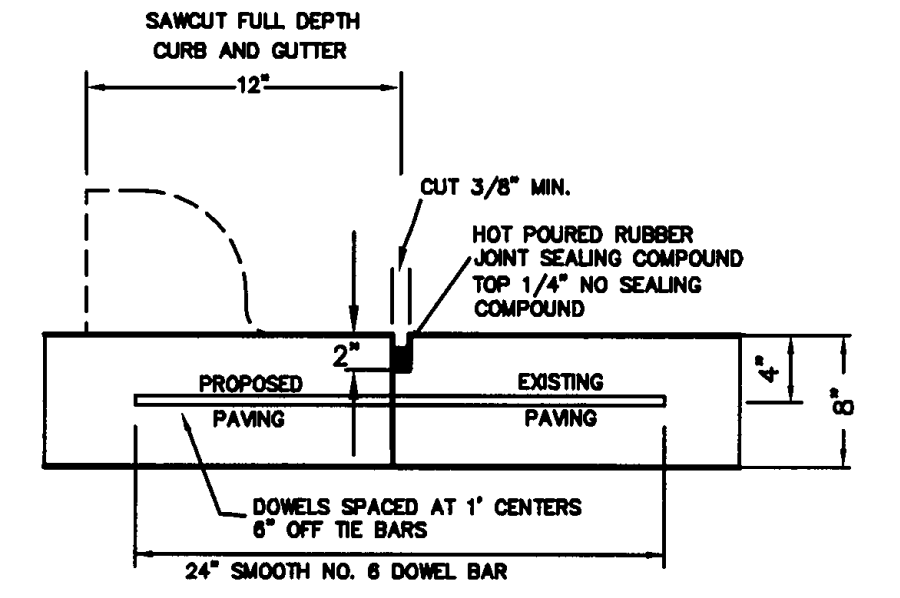
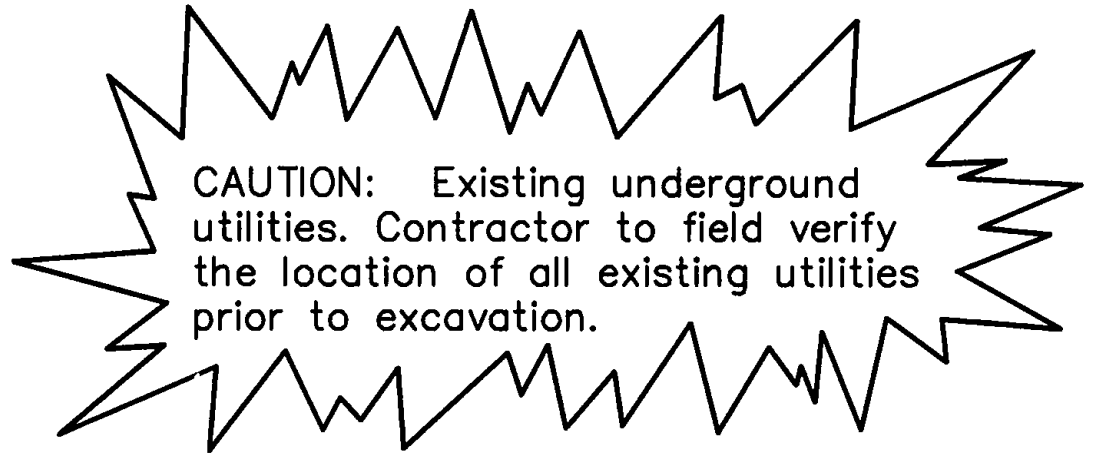
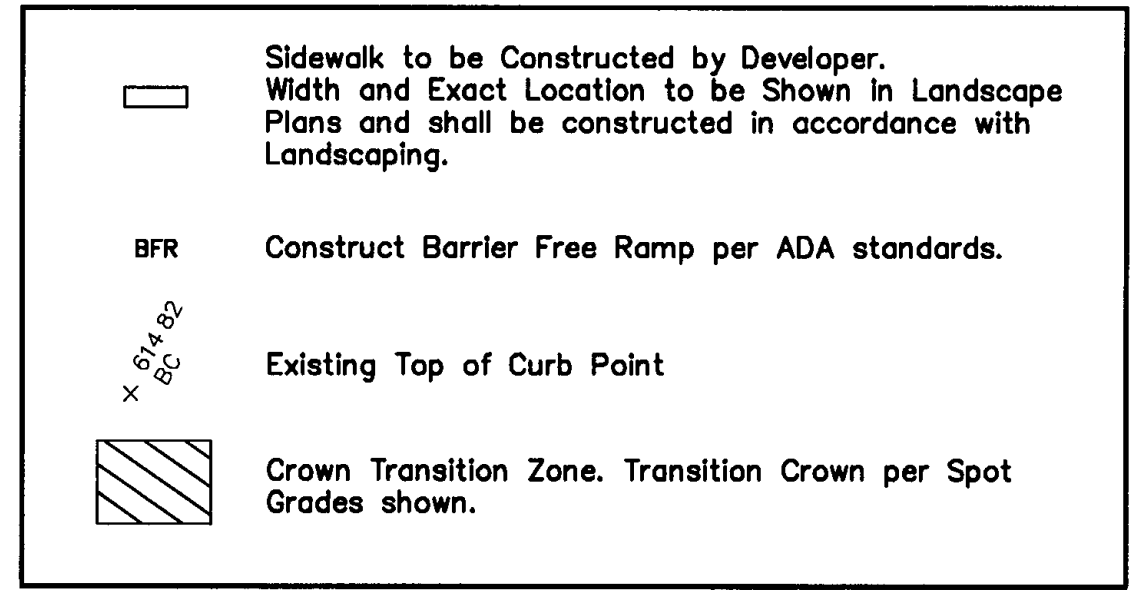
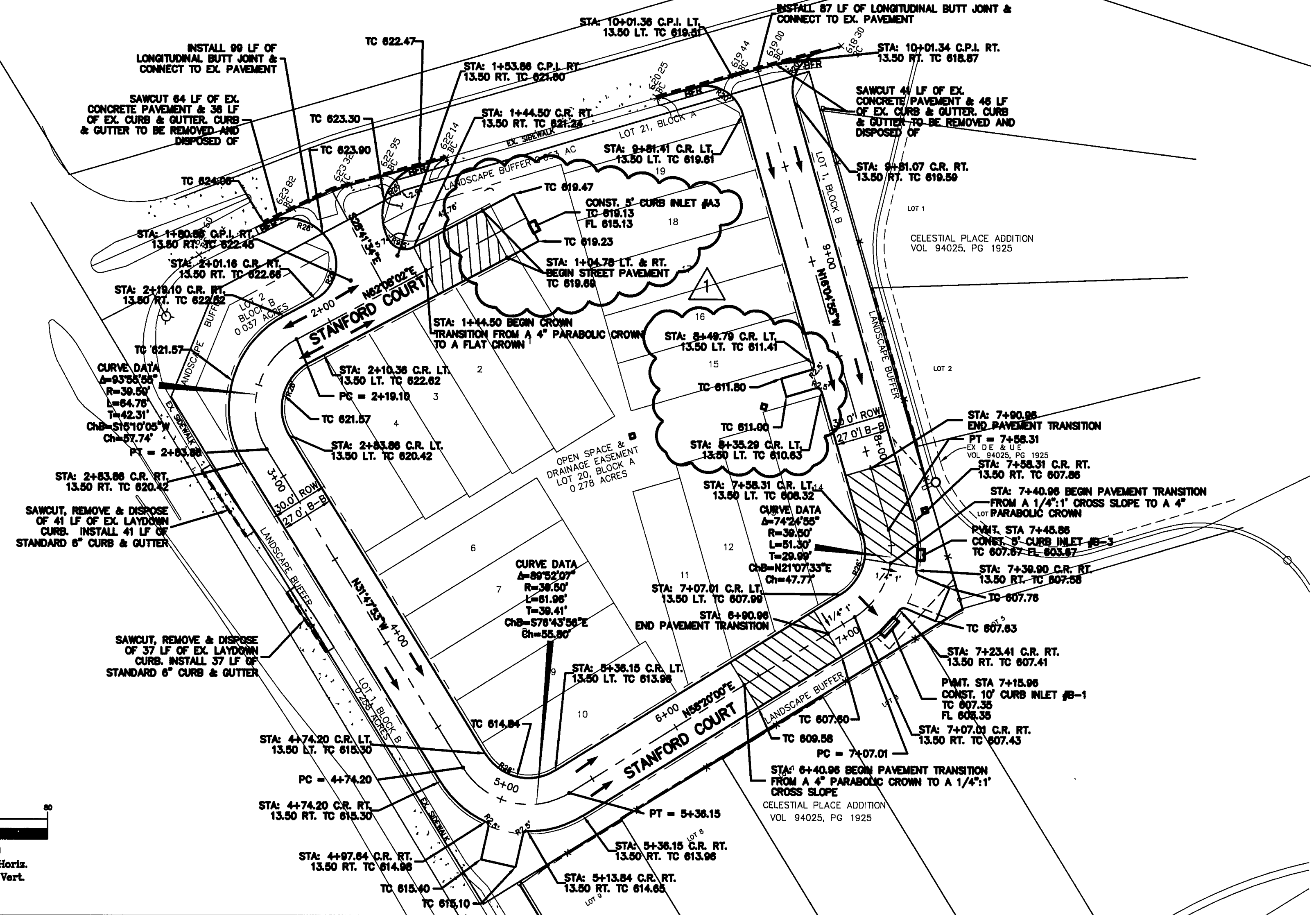
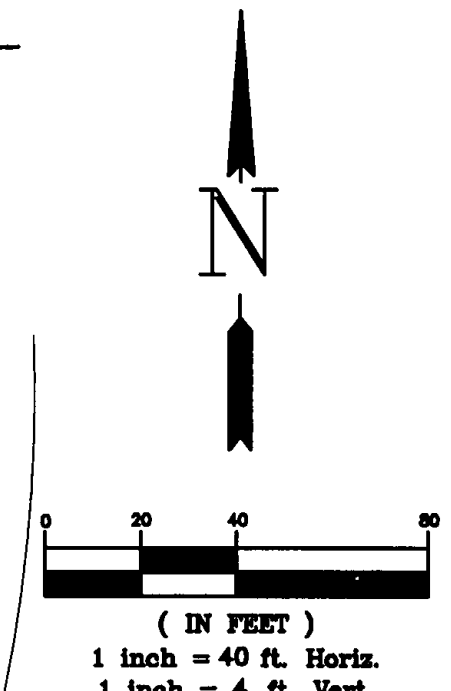


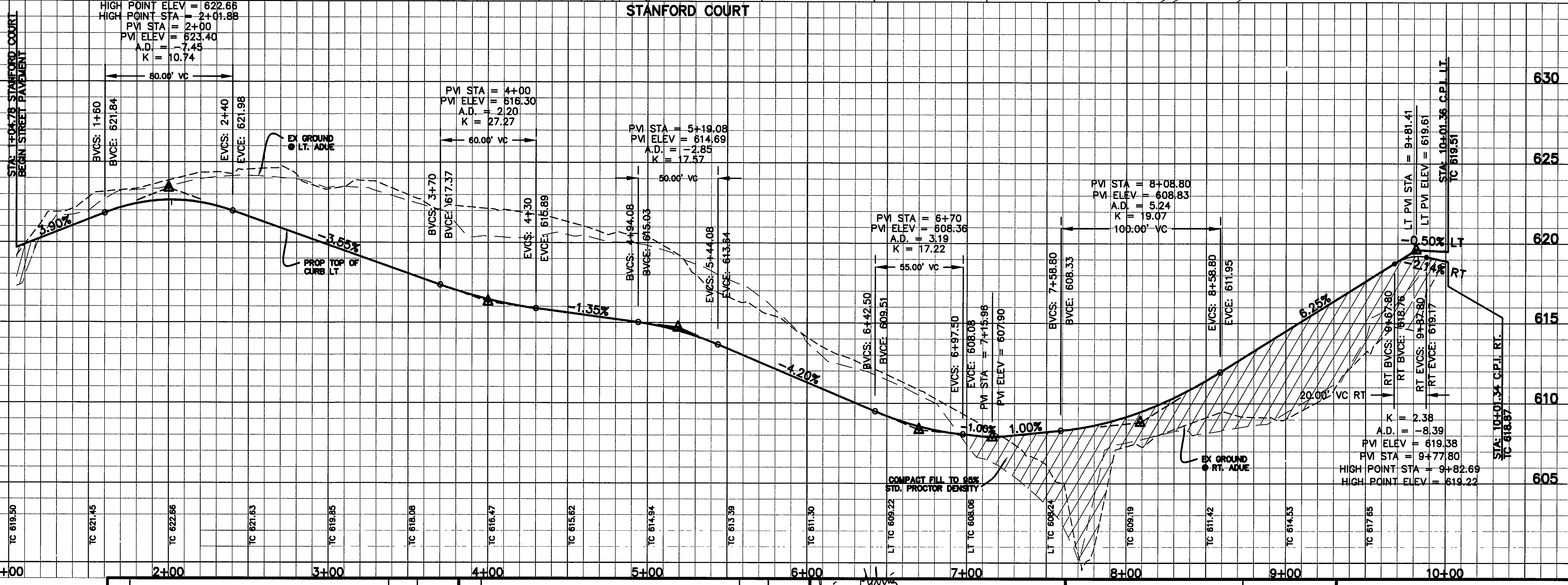
**5\"/>**



**1/4\"/>**



**LONGITUDINAL BUTT JOINT**  
N.T.S.



RECORD DOCUMENTS  
 THESE RECORD DOCUMENTS HAVE BEEN PREPARED BASED ON INFORMATION PROVIDED BY OTHERS. JBI PARTNERS, INC. HAS NOT VERIFIED THE ACCURACY AND/OR COMPLETENESS OF THIS INFORMATION, UNLESS OTHERWISE NOTED ON THESE DOCUMENTS. JBI PARTNERS, INC. SHALL NOT BE RESPONSIBLE FOR ANY ERRORS OR OMISSIONS THAT MAY BE INCORPORATED AS A RESULT OF ERRONEOUS INFORMATION PROVIDED BY OTHERS.  
 JBI PARTNERS, INC.  
 BY: *John Helms*  
 DATE: 3/2/09

BENCHMARKS.

BM #1 - CITY OF DALLAS WATER DEPARTMENT BENCHMARK, NORTHEAST CORNER OF CELESTIAL ROAD AND MONTFORT DRIVE, SQUARE CUT ON CONCRETE BASE OF 6 FOOT BRICK WALL. ELEVATION = 626.81'

BM #2 - SOUTHEAST CORNER OF CELESTIAL ROAD AND MONTFORT DRIVE, "X" CUT IN CONCRETE SIDEWALK, APPROXIMATELY 22 FEET NORTH OF THE CURB RETURN ON MONTFORT DRIVE. ELEVATION = 624.51'

NO.	REVISIONS DURING CONSTRUCTION	BY	DATE	NO.	REVISIONS DURING PLAN REVIEW	BY	DATE
2.	ADDED INLETS B-2 & B-3	LJG	4/10/07				
1.	REVISED PARKING SPACES	LJG	2/8/07	1.	REVISED PER CITY COMMENTS	LJG	7/28/08
							3/2/09

The seal appearing on this document was authorized by Lucien J. Gehrig, P.E. 102059. Alteration of a sealed document without proper notification to the responsible engineer is an offense under the Texas Engineering Practice Act.

**Jones & Boyd, Inc.**  
 17090 Dallas Parkway, Suite 200  
 Dallas, Texas 75248  
 972.248.7676 office  
 972.248.1414 fax  
 www.jones-boyd.com

- Engineering
- Surveying
- Planning
- Landscape Architecture
- Construction Management

**PAVING PLAN AND PROFILE**  
**STANFORD COURT**  
**STANFORD COURT VILLAS**  
**TOWN OF ADDISON, DALLAS COUNTY, TX**

PROJECT NO. CDC004  
 SHEET NO. 3

Plotted by: Igehrig Plot Date: 3/2/2009 9:50 AM