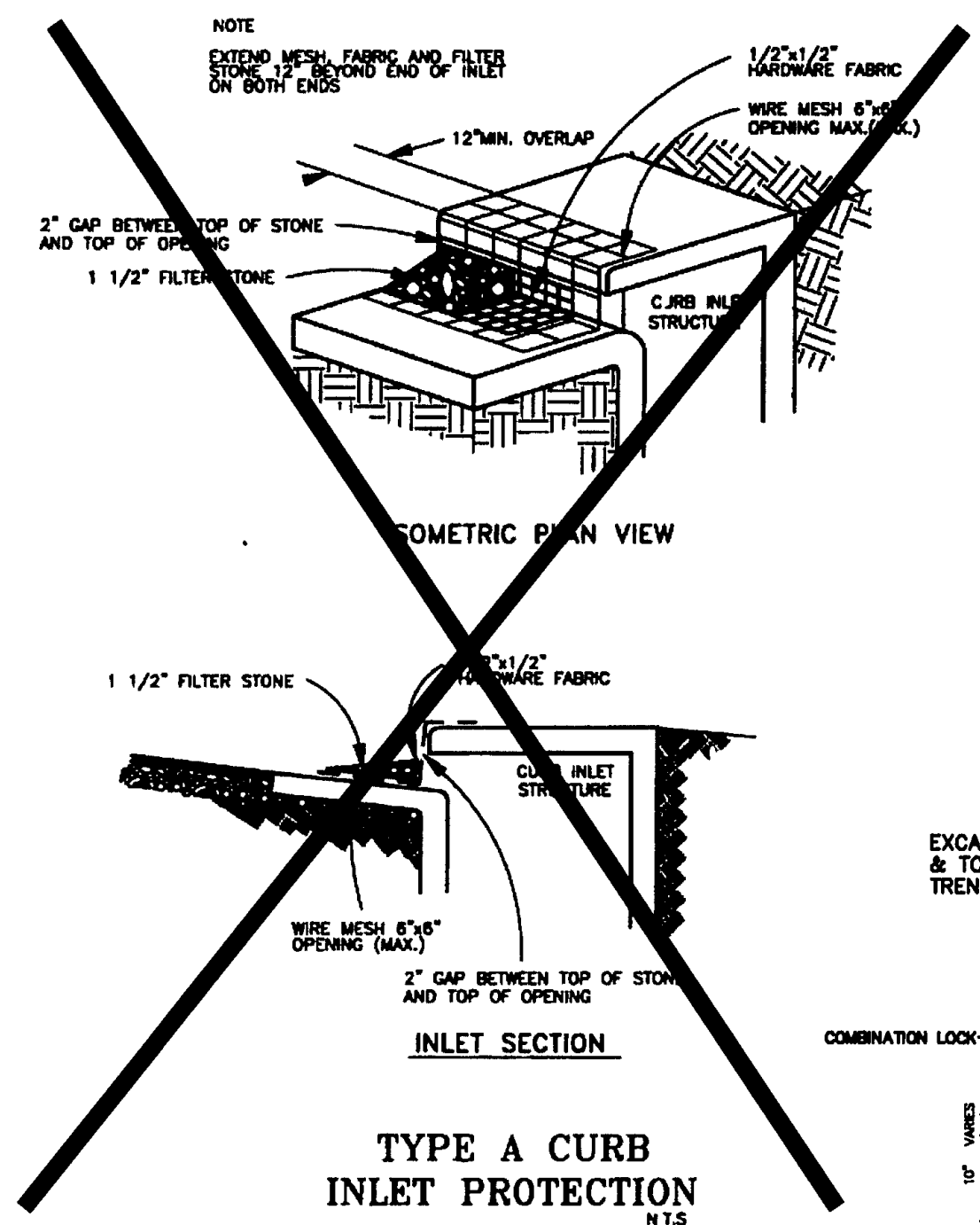


LEGEND

- 625 — Existing Major contour elevation
- 624 — Existing Minor contour elevation
- ⊠ Inlet Erosion Protection by Utility Contractor
- ▣ Silt Fence Erosion Control by Earthwork Contractor
- Direction of Flow for Proposed Grading
- 4' Curlex Applied After Paving & Final Grading

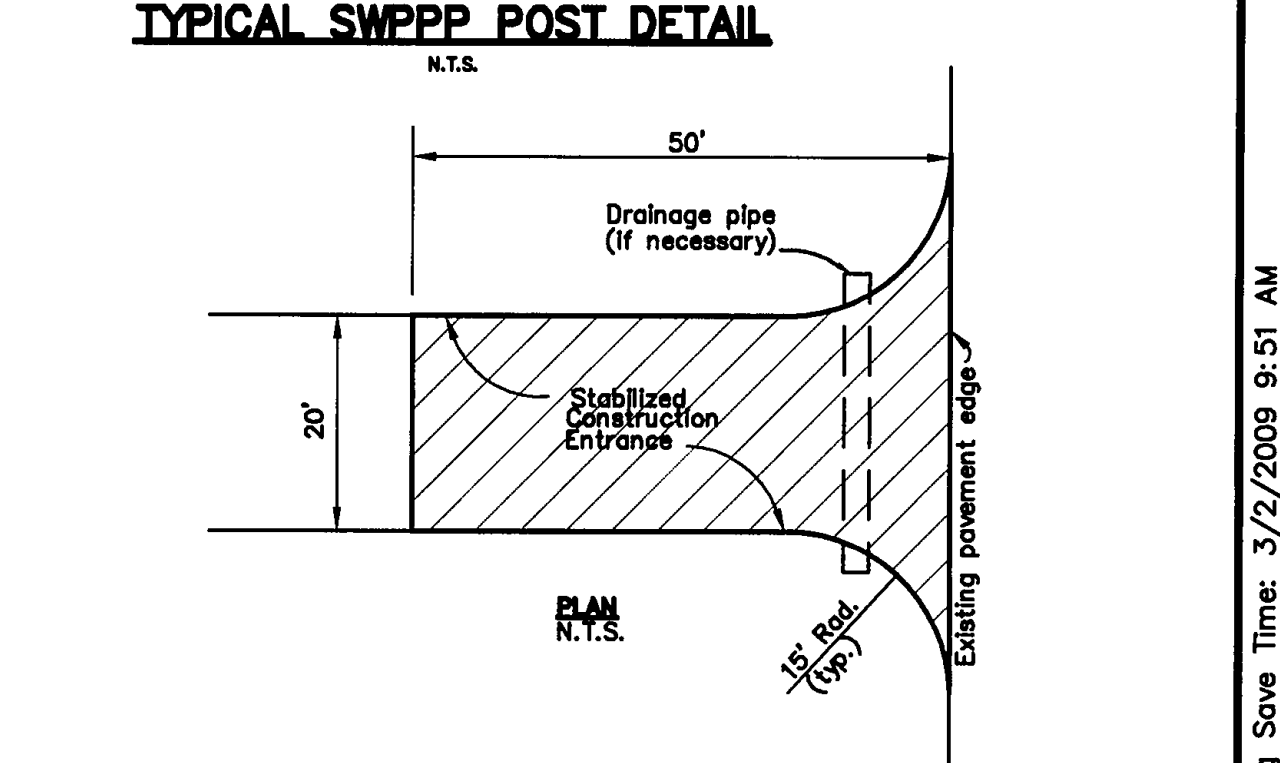
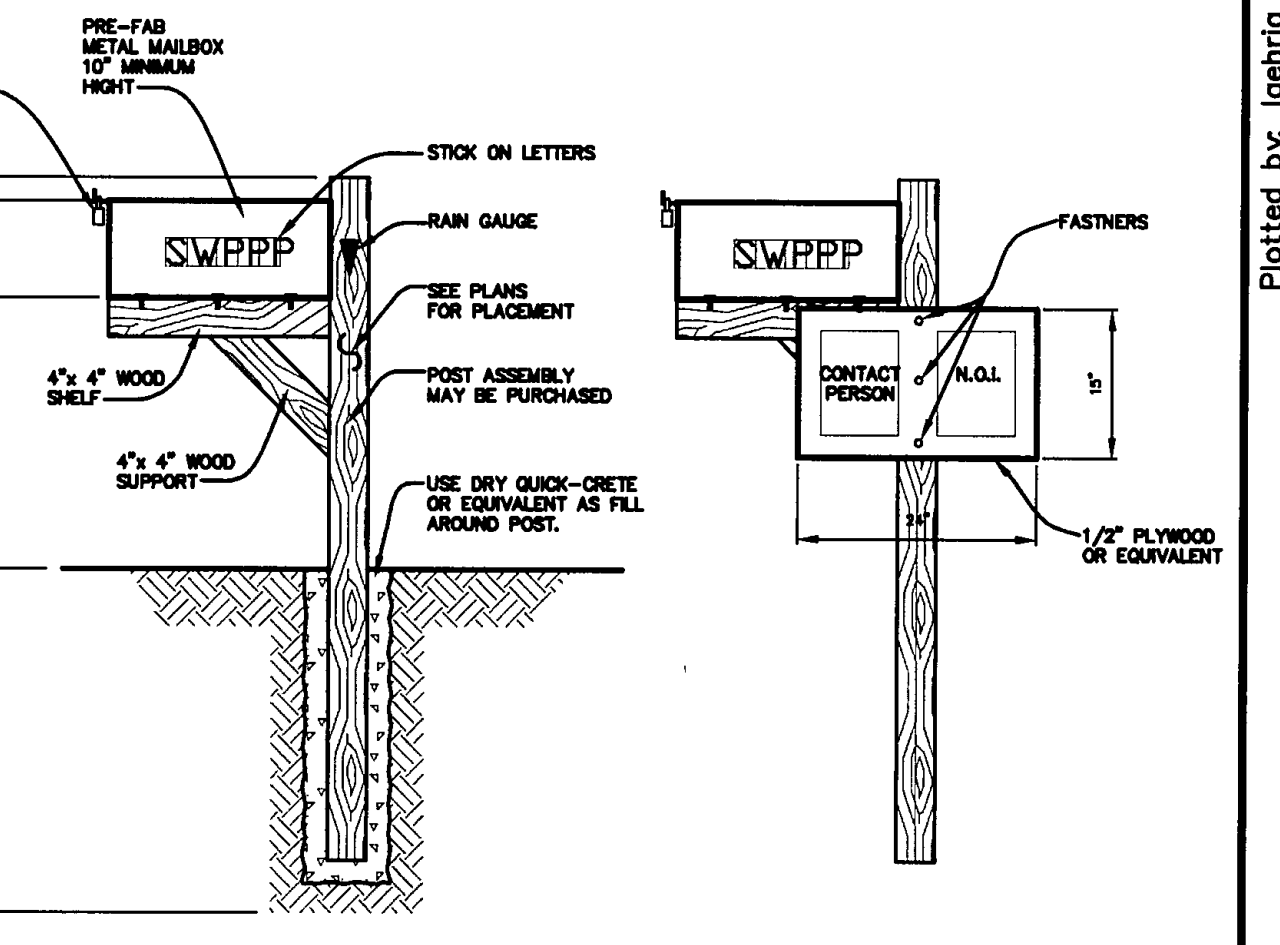
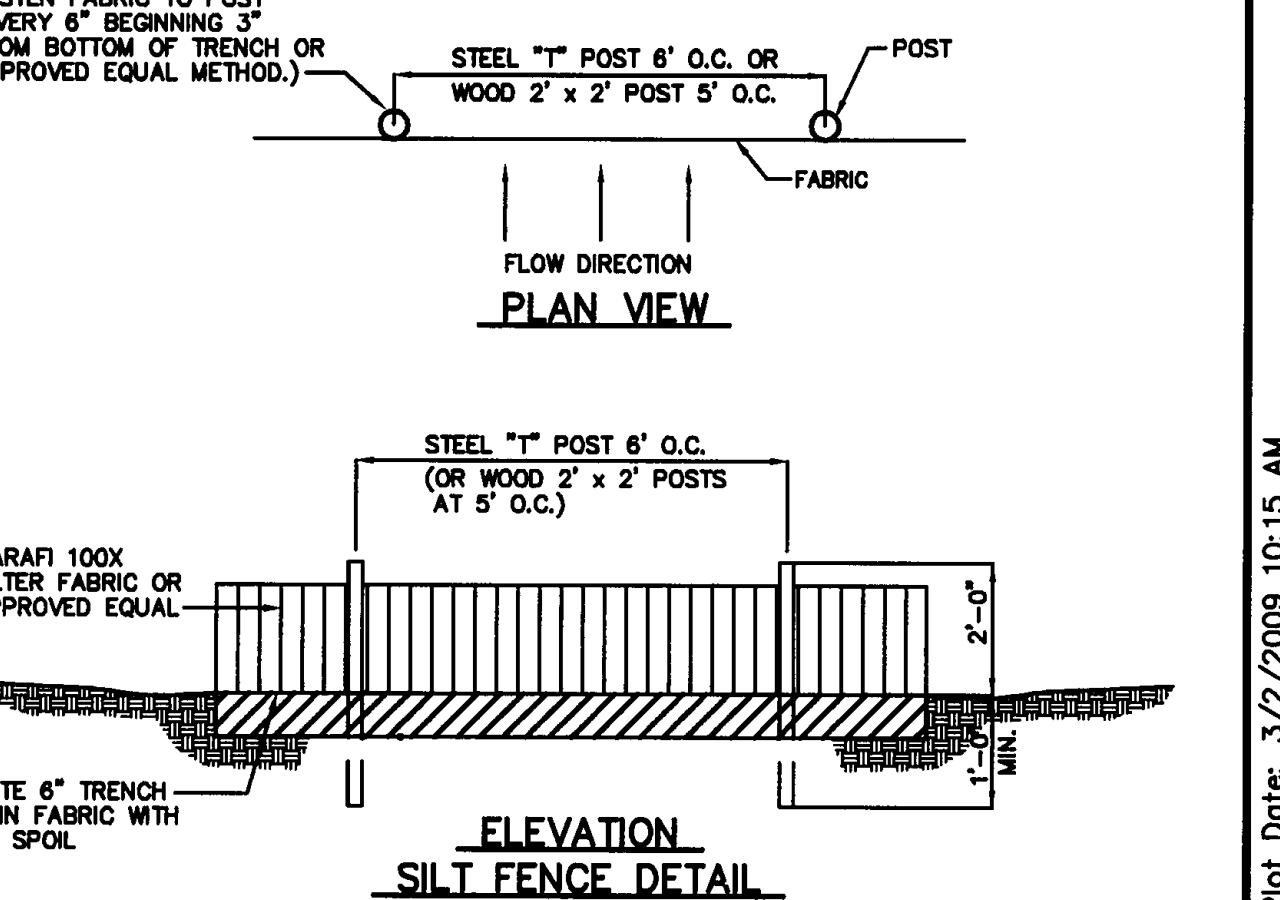
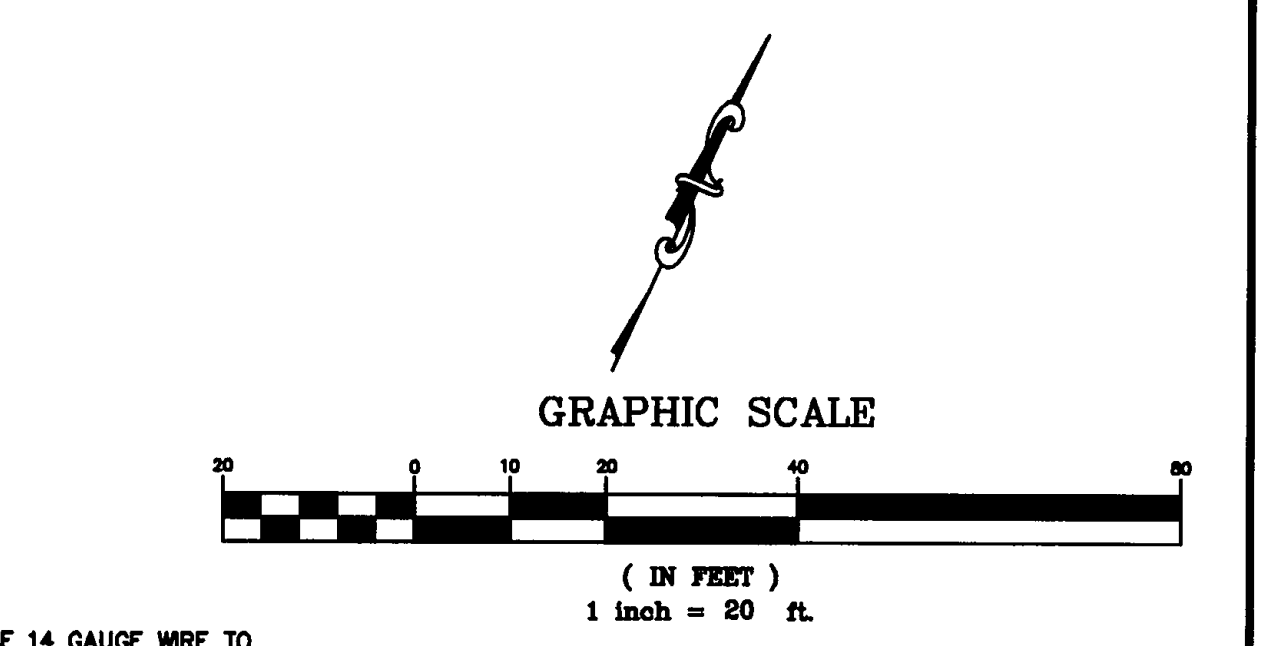


GENERAL NOTES FOR THE EROSION CONTROL PLAN

- All operators and/or contractors shall conform to the terms and conditions of the National Pollution Discharge Elimination System (NPDES) General Permit as published in the Federal Register, Vol. 63, No. 128, July 6, 1998, by the Environmental Protection Agency (EPA). The Notice of Intent (NOI), as required by the General Permit, must be properly displayed on site at all times by each operator.
- All releases of reportable quantities of hazardous substances shall be reported immediately to the facility operator and EPA.
- The Contractor shall inspect the site at least once every fourteen days and within 24 hours of a 1/2-inch or greater rainfall event. The Contractor shall document the results. Copies of the inspection reports shall accompany the Contractor's monthly pay request. The Contractor shall not be paid until said reports are presented to the Owner/Owner's Representative. The Earthwork Contractor shall be responsible for inspection until the Utility Contractor begins his work. The Utility Contractor shall be responsible for inspections until the Paving Contractor begins his work. The Paving Contractor shall be responsible for inspections until the Earthwork Contractor begins lot benching operations. The Earthwork Contractor shall make remaining inspections until project is accepted by the City. Modifications to the Storm Water Pollution Prevention Plan shall be implemented and be in-place within a seven calendar day period.
- If any contractor sees a violation by an operator or another contractor, he shall notify the operator and contractor in violation, as well as the facility operator.
- Erosion control shall be installed prior to any grading.
- Accumulated silt deposits shall be removed from silt fences and hay bale dikes when silt depth reaches six inches. Removal of silt deposits by the contractor shall be incidental to the performance of the contract and a separate bid item shall not be included.
- The contractor shall add or delete erosion protection at the request and direction of the Operator or the City.
- After installation of pavement, final lot benching and general cleanup, the grass groundcover shall be established in all street parkways, lots and all other disturbed areas. Materials shall be as specified in Item 2.15 and seeding shall be in accordance with Item 3.10 of the MCDOT Standard Specifications. Depending upon schedule for house construction, grass establishment may be achieved on a single lot basis if house construction begins immediately, on that lot. It shall be the contractor's responsibility to control and limit silt and sediment leaving the site. Specifically, the contractor shall protect all public streets, alleys, streams and storm drainage systems from erosion deposits.
- If any erosion control is removed for construction and/or access purposes, the contractor shall replace it at the end of the work day. It shall be the contractor's responsibility to provide a dumpster (or equal) to collect solid waste materials during construction.

SILT FENCE GENERAL NOTES

- Steel posts which support the silt fence shall be installed on a slight angle toward the anticipated runoff source.
- The toe of the silt fence shall be trrenched in with a spade or mechanical trencher, so that the downslope face of the trench is flat and perpendicular to the line of flow.
- The trench should be a minimum of six inches deep and four inches wide to allow for the silt fence to be laid in the ground and backfilled.
- Silt fence should be securely fastened to each steel support post or to wave wire, which is in turn attached to the steel fence posts. Inspection shall be frequent and repair or replacement shall be made promptly as needed.
- Silt fence shall be removed when it has served its usefulness, so as not to block or impede storm flow or drainage.
- Sediment trapped by this practice shall be disposed of in an approved site in a manner that will not contribute to additional siltation.
- Accumulated silt shall be removed when it reaches a depth of six inches and disposed of in an approved spoil site or as in No. 7 above.
- Filter fabric is to be Marafi 100X or approved equal. (Marafi, Inc.: 800-438-1855)



STABILIZED CONSTRUCTION ENTRANCE GENERAL NOTES:

- Crushed stone for construction entrance shall be 2"-3" at greatest dimension and shall be installed to a compacted depth of six inches.
- Filter fabric is to be Marafi 100X or equal. (Marafi, Inc.: 800-438-1855)
- If construction entrance crosses a drainage ditch, swale, etc., a drainage pipe shall be installed with min. 12 inches cover of crushed stone.

BENCHMARKS.

BM #1 - CITY OF DALLAS WATER DEPARTMENT BENCHMARK, NORTHEAST CORNER OF CELESTIAL ROAD AND MONTFORT DRIVE, SQUARE CUT ON CONCRETE BASE OF 6 FOOT BRICK WALL. ELEVATION = 626.81'

BM #2 - SOUTHEAST CORNER OF CELESTIAL ROAD AND MONTFORT DRIVE, "X" CUT IN CONCRETE SIDEWALK, APPROXIMATELY 22 FEET NORTH OF THE CURB RETURN ON MONTFORT DRIVE. ELEVATION = 624.51'

NO.	REVISIONS DURING CONSTRUCTION	BY	DATE	NO.	REVISIONS DURING PLAN REVIEW	BY	DATE
				2.	REVISED LEGEND AND INLET PROTECTION	JAL	8/10/06
1.	REVISED INLET PROTECTION	LJG	4/16/07	1.	REVISED PER CITY COMMENTS	LJG	7/28/06

RECORD DOCUMENTS
THESE RECORD DOCUMENTS HAVE BEEN PREPARED BASED ON INFORMATION PROVIDED BY OTHERS. JBI PARTNERS, INC. HAS NOT VERIFIED THE ACCURACY AND/OR COMPLETENESS OF THIS INFORMATION. UNLESS OTHERWISE NOTED ON THESE DOCUMENTS, JBI PARTNERS, INC. SHALL NOT BE RESPONSIBLE FOR ANY ERRORS OR OMISSIONS THAT MAY BE INCORPORATED AS A RESULT OF ERRONEOUS INFORMATION PROVIDED BY OTHERS.

JBI PARTNERS, INC.
BY: *Juan Melius*
DATE: 3/2/07

The seal appearing on this document was authorized by Lucien J. Gehrig, P.E. 102059. Alteration of a sealed document without proper notification to the responsible engineer is an offense under the Texas Engineering Practice Act.

Jones & Boyd, Inc.
17090 Dallas Parkway, Suite 200
Dallas, Texas 75248
972.248.7676 office
972.248.1414 fax
www.jones-boyd.com

EROSION CONTROL PLAN		PROJECT NO.	CDC004
STANFORD COURT VILLAS		SHEET NO.	4
Town of Addison, Dallas County, Texas			

Drawing: H:\Projects\CD004\CD004.dwg Saved By: JGehrig Save Time: 3/2/2009 8:51 AM Plotted by: JGehrig Plot Date: 3/2/2009 10:15 AM