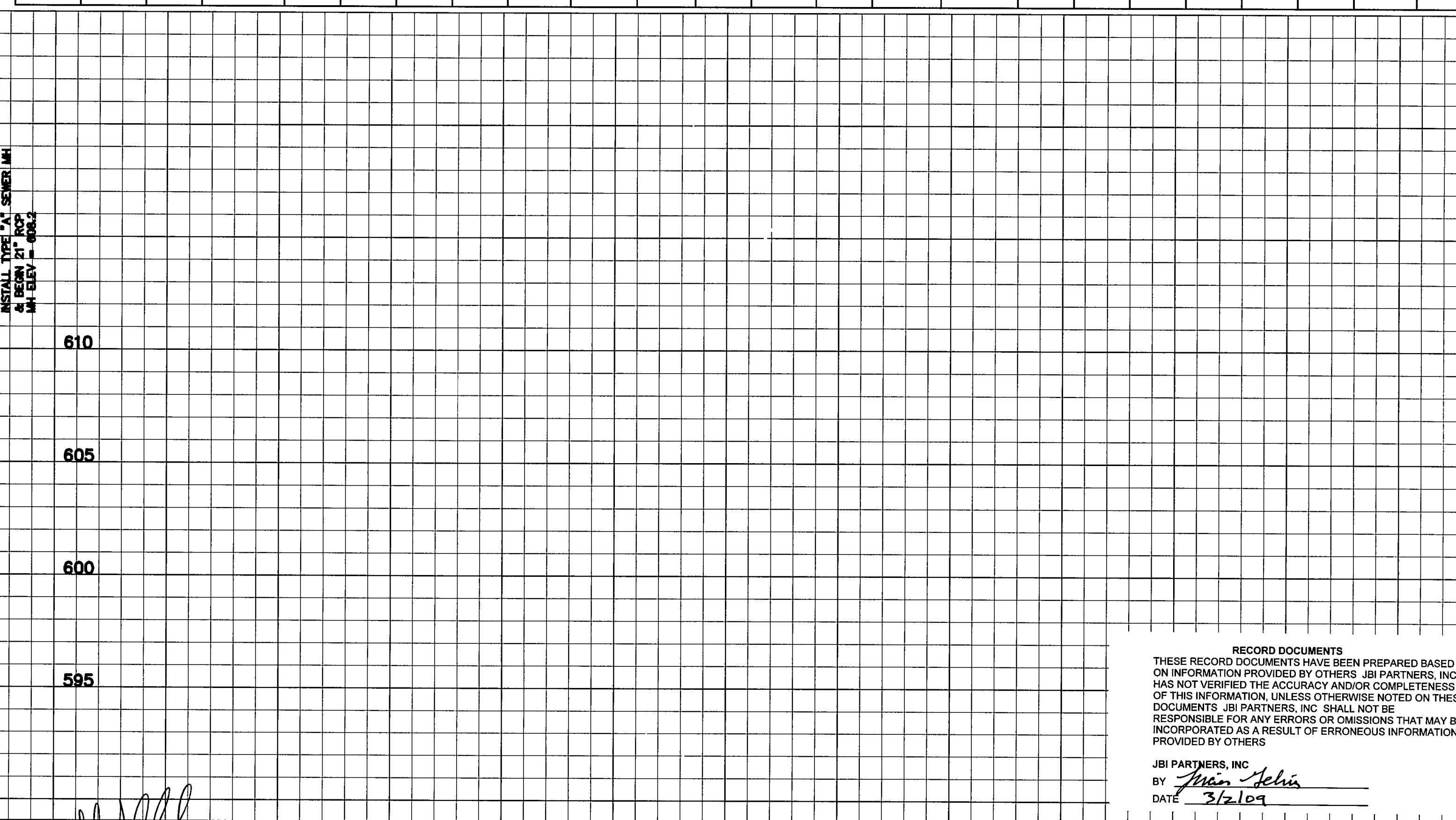
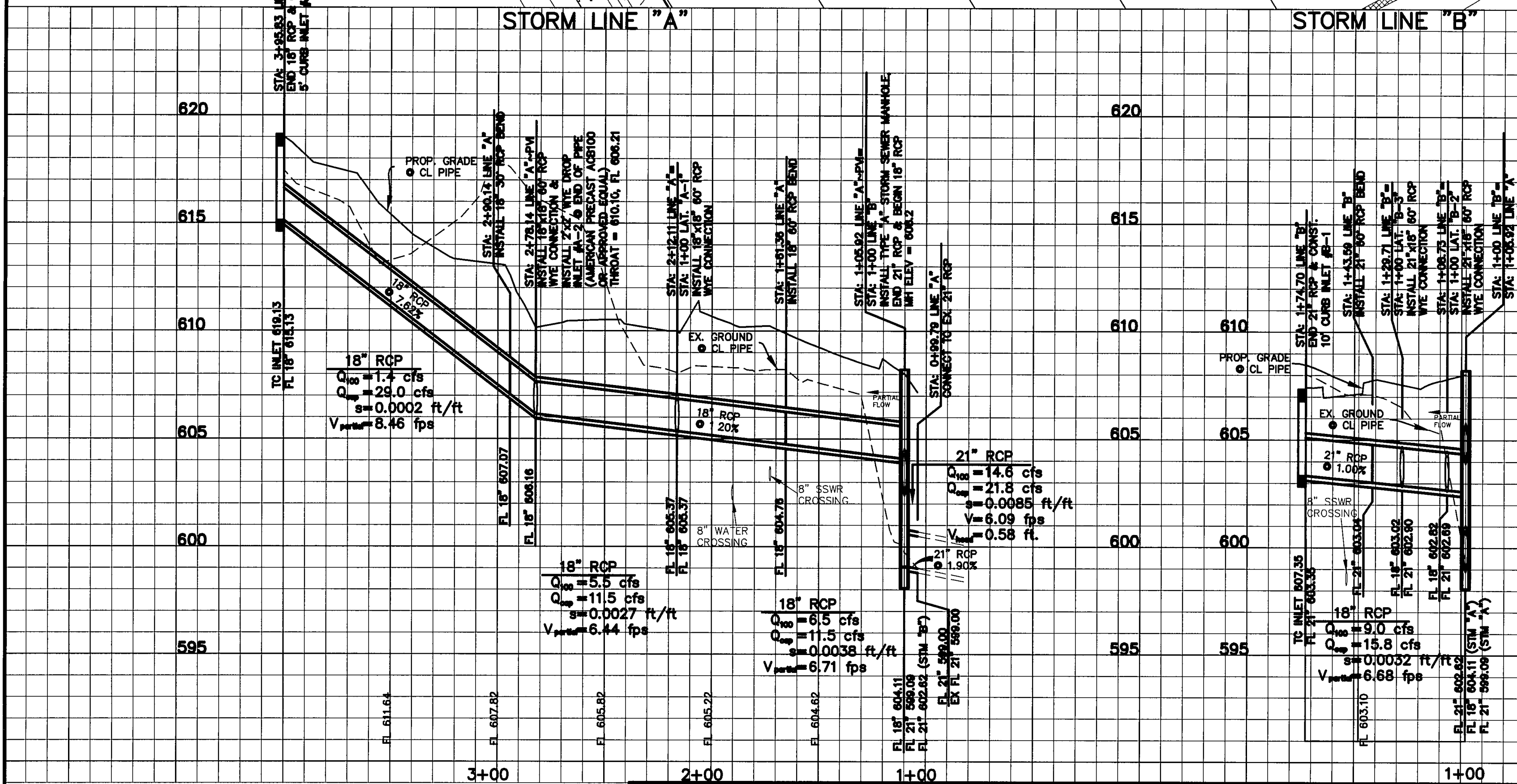


INLET DESIGN CALCULATIONS

INLET No	Location	Drainage Area No	AREA RUNOFF Q=CIA					Upstream Inlet Bypass and Crossover (cfs)	Total Gutter Flow (cfs)	Gutter Capacity (cfs)	Gutter Slope (%)	Crown Type	SELECTED INLET				Drainage Area	A Adjusted	
			Design Storm Freq (yrs)	Time of Conc (min)	Intensity I (in/hr)	Runoff Coeff "C"	Area (Ac)						Q (cfs)	Length "L" (Feet)	Type	Inlet Capacity (cfs)			Carry-Over Downstream (cfs)
A-3	Parking Space	A3	100	10	9.74	0.8	0.20	1.4	0.0	1.4	25.1	2.00	Straight	5	SAG	10.0	0.0	1.4	1.38
A-2	2'x2' DROP INLET	A2	100	10	8.74	0.8	0.64	4.5	0.0	4.5	—	—	GTD	—	WYE	18.0	0.0	4.5	4.58
A-1	2'x2' DROP INLET	A1	100	10	8.74	0.8	0.17	1.2	0.0	1.2	—	—	GTD	—	WYE	16.0	0.0	1.2	1.17
B-1	7+16 98 Stanford Court	B1	100	10	8.74	0.8	0.90	6.3	0.0	6.3	19.9	1.00	Straight	10	SAG	20.0	0.0	6.3	6.30
B-2	2'x2' DROP INLET	B2	100	10	8.74	0.8	0.08	0.6	0.0	0.6	—	—	GTD	—	WYE	16.0	0.0	0.6	0.60
B-3	7+45 88 Stanford Court	B3	100	10	8.74	0.8	0.31	2.2	0.0	2.2	19.9	1.00	Straight	6	ON GRADE	2.5	0.0	2.2	2.21

STORM SEWER PIPE HYDRAULIC CALCULATIONS

UPSTREAM STATION	DNSTREAM STATION	DISTANCE	AREA "A" (ACRES)	RUNOFF COEF "C"	INCREM "CA"	ACCUM "CA"	TIME AT UPSTREAM STATION (MIN)	STORM FREQUENCY (YEARS)	INTENSITY "I" (IN/HR)	RUNOFF "Q" (CFS)	SLOPE HYDRAULIC GRADIENT "S" (FT/FT)	STORM SEWER SIZE (IN)	(BOX ONLY) PIPE AREA (FT ²)	(BOX ONLY) PIPE CONVEYANCE (N=0.013)	VELOCITY "V" (FPS)	VELOCITY HEAD "V ² /2G" (FT)	"L" X "S" K _t	PIPE SIZE CHANGE LOSSES	INLET & BEND LOSSES	FLOW TIME (MIN)	TIME AT DNSTREAM STATION (MIN)	
STORM LINE A																						
395.83	290.14	105.69	A3	0.20	0.80	0.18	0.16	10.00	100	8.74	1.4	0.0022	18		0.78	0.01	0.02	0.25	0.00	0.00	2.23	12.23
290.14	278.14	12.00	30 DEG BEND	0.00	0.80	0.00	0.16	12.23	100	8.20	1.3	0.0022	18		0.74	0.01	0.00	0.14	0.00	0.27	12.50	
278.14	212.11	66.03	A2	0.64	0.80	0.51	0.67	12.50	100	8.13	5.5	0.0027	18		3.09	0.18	0.18	0.08	0.00	0.36	12.85	
212.11	181.38	50.75	A1	0.17	0.80	0.14	0.81	12.85	100	8.04	6.5	0.0038	18		3.88	0.21	0.19	0.48	0.00	0.10	0.23	13.08
181.38	105.92	55.44	60 DEG BEND	0.00	0.80	0.00	0.81	13.08	100	7.99	8.5	0.0038	18		3.85	0.21	0.21	0.37	0.00	0.26	13.33	
105.92	89.79	8.13	LINE B1, MH	1.30	0.80	1.04	1.85	13.33	100	7.93	14.6	0.0085	21		6.08	0.58	0.05	0.00	0.02	0.02	13.35	
STORM LINE B																						
174.70	129.71	44.99	B1	0.80	0.80	0.72	0.72	10.00	100	8.74	8.3	0.0016	21		2.62	0.11	0.07	0.48	0.08	0.09	0.29	10.29
129.71	108.73	20.98	B3	0.31	0.80	0.25	0.97	10.29	100	8.67	8.4	0.0028	21		3.49	0.15	0.08	0.48	0.02	0.10	0.10	10.39
108.73	100.00	8.73	B2	0.08	0.80	0.06	1.03	10.39	100	8.65	8.9	0.0032	21		3.71	0.21	0.03	0.00	0.00	0.04	10.43	



BENCHMARKS

BM #1 - CITY OF DALLAS WATER DEPARTMENT BENCHMARK, NORTHEAST CORNER OF CELESTIAL ROAD AND MONTFORT DRIVE, SQUARE CUT ON CONCRETE BASE OF 6 FOOT BRICK WALL ELEVATION = 626.81'

BM #2 - SOUTHEAST CORNER OF CELESTIAL ROAD AND MONTFORT DRIVE, "X" CUT IN CONCRETE SIDEWALK, APPROXIMATELY 22 FEET NORTH OF THE CURB RETURN ON MONTFORT DRIVE ELEVATION = 624.51'

NO.	REVISIONS DURING CONSTRUCTION	BY	DATE	NO.	REVISIONS DURING PLAN REVIEW	BY	DATE
1.	ADDED INLETS B-2 & B-3	LJG	4/16/07	1.	REVISED PER CITY COMMENTS	LJG	7/28/06

The seal appearing on this document was authorized by Steven S. Crauford, P.E. 92677. Alteration of a sealed document without proper notification to the responsible engineer is an offense under the Texas Engineering Practice Act.

Jones & Boyd, Inc.
 17090 Dallas Parkway, Suite 200
 Dallas, Texas 75248
 972.248.7676 office
 972.248.1414 fax
 www.jones-boyd.com

STORM SEWER PLAN & PROFILE
STORM LINES "A" & "B"
STANFORD COURT VILLAS
 Town of Addison, Dallas County, Texas

PROJECT NO. **CDC004**
 SHEET NO. **7**

RECORD DOCUMENTS
 THESE RECORD DOCUMENTS HAVE BEEN PREPARED BASED ON INFORMATION PROVIDED BY OTHERS. JBI PARTNERS, INC. HAS NOT VERIFIED THE ACCURACY AND/OR COMPLETENESS OF THIS INFORMATION, UNLESS OTHERWISE NOTED ON THESE DOCUMENTS. JBI PARTNERS, INC. SHALL NOT BE RESPONSIBLE FOR ANY ERRORS OR OMISSIONS THAT MAY BE INCORPORATED AS A RESULT OF ERRONEOUS INFORMATION PROVIDED BY OTHERS.

JBI PARTNERS, INC.
 BY *John Selvia*
 DATE 3/2/09

Drawing: H:\Projects\CDC004.dwg | CDC004\$T.dwg Saved By: Igehrig Save Time: 4/16/2007 5:10 PM Plotted By: Igehrig Plot Date: 4/16/2007 5:10 PM