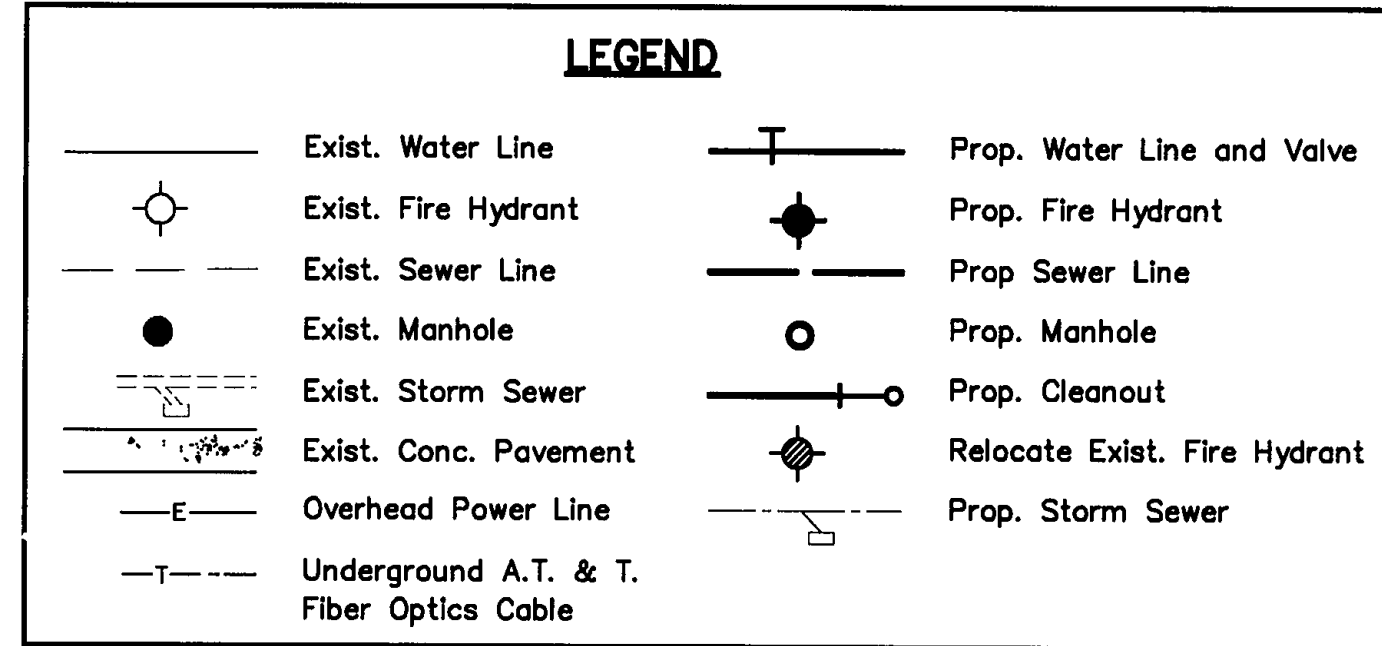
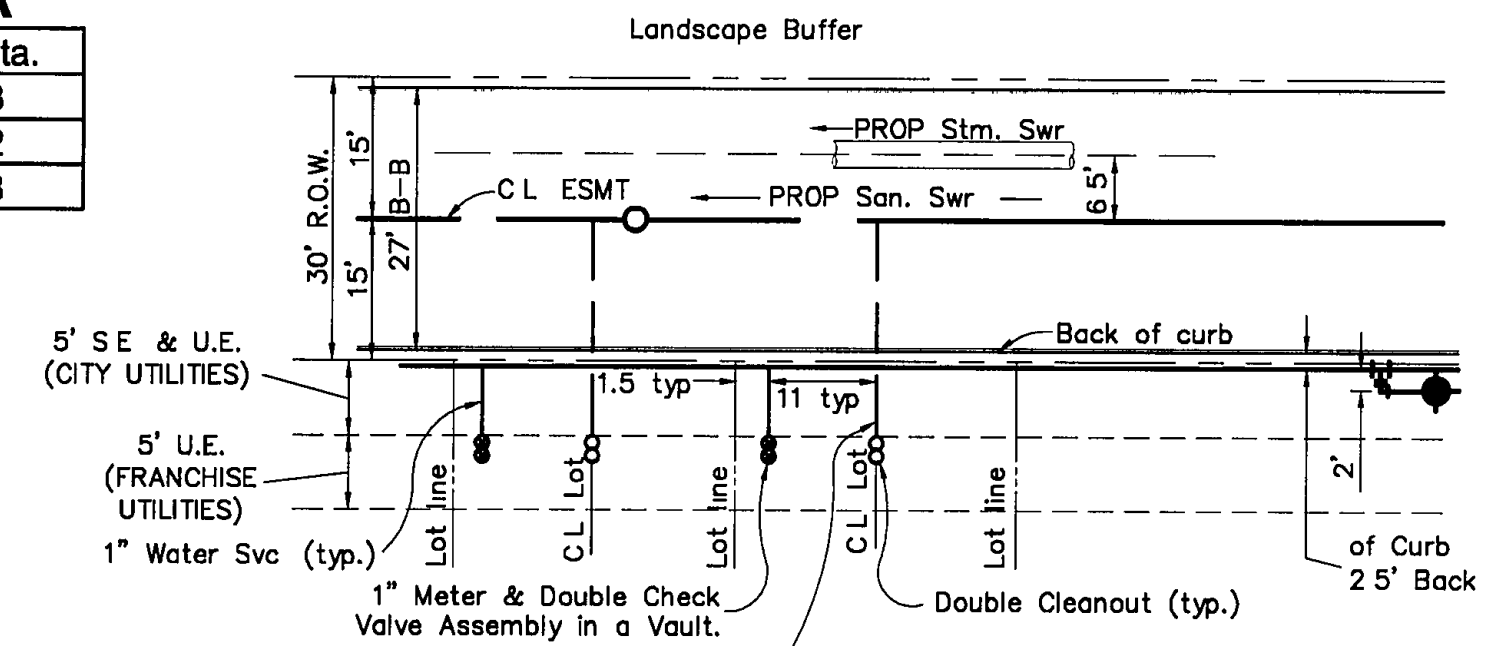


FIRE HYDRANT DATA

FH #	Street Name	Pvmt. Sta.
1	Stanford Court	3+58.53
2	Stanford Court	6+12.12
3	Stanford Court	9+81.38



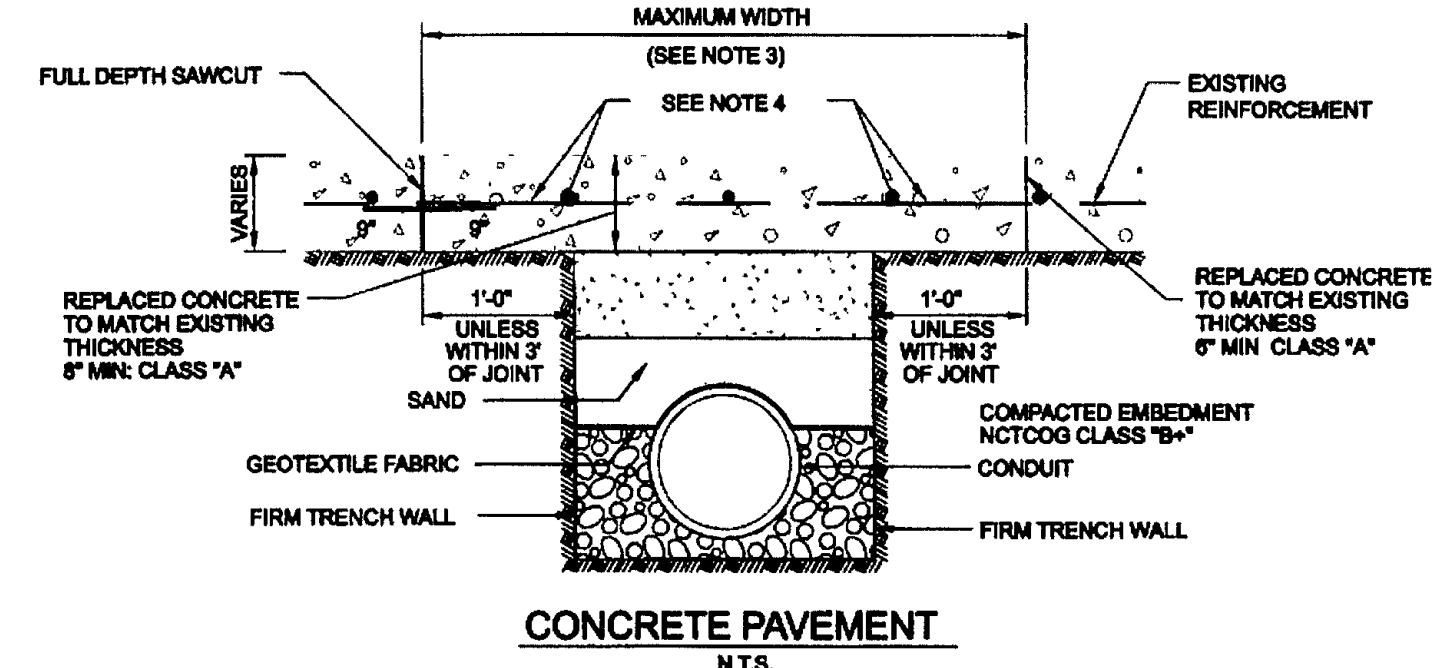
RECORD DOCUMENTS
 THESE RECORD DOCUMENTS HAVE BEEN PREPARED BASED ON INFORMATION PROVIDED BY OTHERS. JBI PARTNERS, INC. HAS NOT VERIFIED THE ACCURACY AND/OR COMPLETENESS OF THIS INFORMATION. UNLESS OTHERWISE NOTED ON THESE DOCUMENTS, JBI PARTNERS, INC. SHALL NOT BE RESPONSIBLE FOR ANY ERRORS OR OMISSIONS THAT MAY BE INCORPORATED AS A RESULT OF ERRONEOUS INFORMATION PROVIDED BY OTHERS.
 JBI PARTNERS, INC.
 BY: *Therese Melvin*
 DATE: 3/2/09

CAUTION: Existing underground utilities. Contractor to field verify the location of all existing utilities prior to excavation, and notify engineer of any discrepancies.

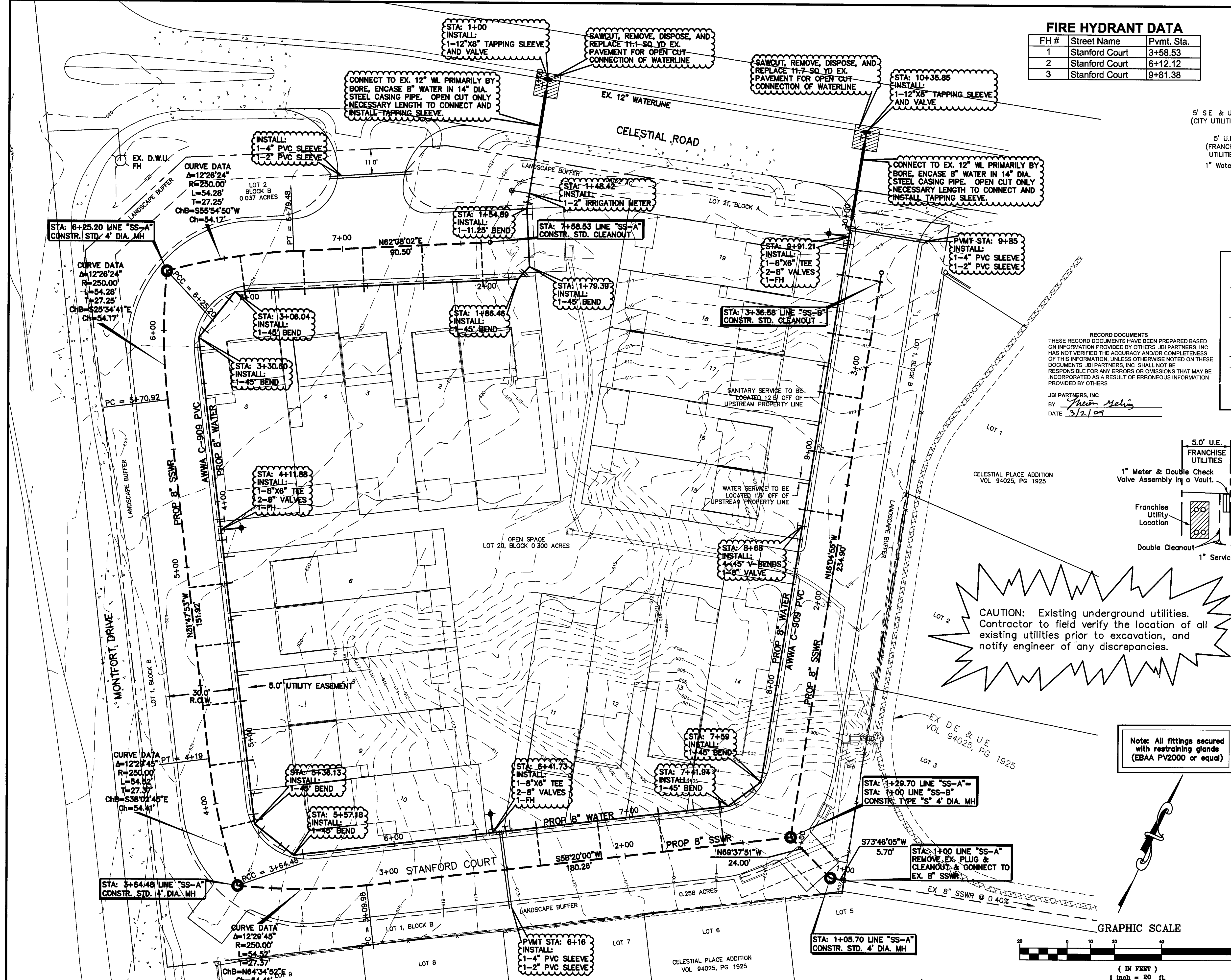
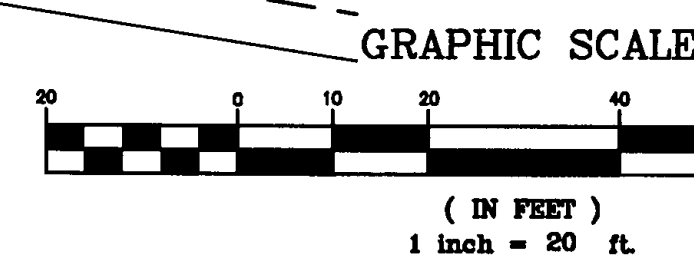
Note: All fittings secured with restraining glands (EBAA PV2000 or equi)

SERVICE SCHEDULE

SERVICE TYPE	SERVICE SIZE	NUMBER OF SERVICES	METER SIZE	NUMBER OF METERS
WATER (DOM)	1"	19	1"	19
WATER (IRR)	1"	x	1"	0
WATER (IRR)	2"	x	2"	1
SANITARY	4"	19	-	-



NOTES:
 1. WIDTH SHALL BE AT LEAST 2'-0" WIDER THAN EXCAVATION TO PROVIDE 1'-0" MIN. BRIDGE ON EITHER SIDE. IF WITHIN 3'-0" OF EXISTING JOINT, REMOVE TO CONTINUING EDGES TO BE FREE OF ANY SPALLING.
 2. 1" #6 SMOOTH DOWELS SHALL BE DRILLED INTO EXISTING SLAB ON 12" CENTERS AND SECURED WITH EPOXY. MUST BE SQUARE TO FACE OF SLAB.
 3. WHERE NATIVE MATERIAL IS UNSTABLE, A 100 PSF FLOWABLE FILL MAY BE USED TO EMBED PIPING.
 4. PIPE EMBEDMENT SHALL BE NCTCOG CLASS 'B' WITH THE ADDITION OF GEOTEXTILE FABRIC BETWEEN THE STONE AND SAND LAYERS.



BENCHMARKS
 BM #1 - CITY OF DALLAS WATER DEPARTMENT BENCHMARK, NORTHEAST CORNER OF CELESTIAL ROAD AND MONTFORT DRIVE, SQUARE CUT ON CONCRETE BASE OF 6 FOOT BRICK WALL. ELEVATION = 626.81'
 BM #2 - SOUTHEAST CORNER OF CELESTIAL ROAD AND MONTFORT DRIVE, "X" CUT IN CONCRETE SIDEWALK, APPROXIMATELY 22 FEET NORTH OF THE CURB RETURN ON MONTFORT DRIVE. ELEVATION = 624.51'

NO.	REVISIONS DURING CONSTRUCTION	BY	DATE	NO.	REVISIONS DURING PLAN REVIEW	BY	DATE
1.	ADDED INLETS B-2 & B-3	LJG	4/16/07	1.	ADDED EASEMENT DIMENSIONS	JAL	8/10/06
2.	REVISED FRANCHISE UTILITY EASEMENTS	SSC	9/12/06	2.	REVISED FRANCHISE UTILITY EASEMENTS	SSC	9/12/06

The seal appearing on this document was authorized by Lucien J. Gehrig, P.E. 102059. Alteration of a sealed document without proper notification to the responsible engineer is an offense under the Texas Engineering Practice Act.

Lucien J. Gehrig
 LUCIEN J. GHRIG
 102059
 LICENSED PROFESSIONAL ENGINEER

Jones & Boyd, Inc.
 17090 Dallas Parkway, Suite 200
 Dallas, Texas 75248
 972.248.7676 office
 972.248.1414 fax
 www.jones-boyd.com

- Engineering
- Surveying
- Planning
- Landscape Architecture
- Construction Management

WATER & SANITARY SEWER PLAN

STANFORD COURT VILLAS
 Town of Addison, Dallas County, Texas

PROJECT NO. CDC004
 SHEET NO. 8