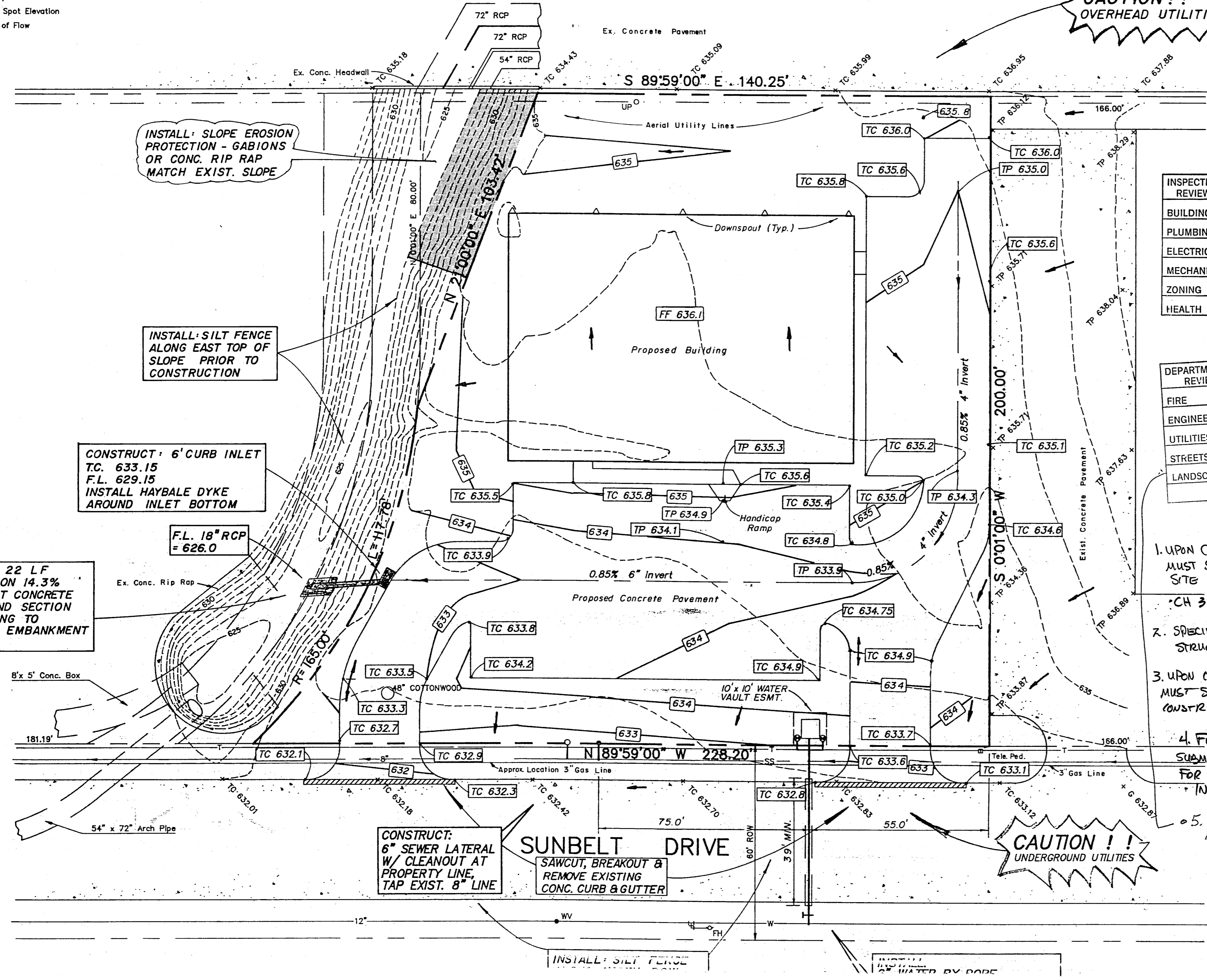
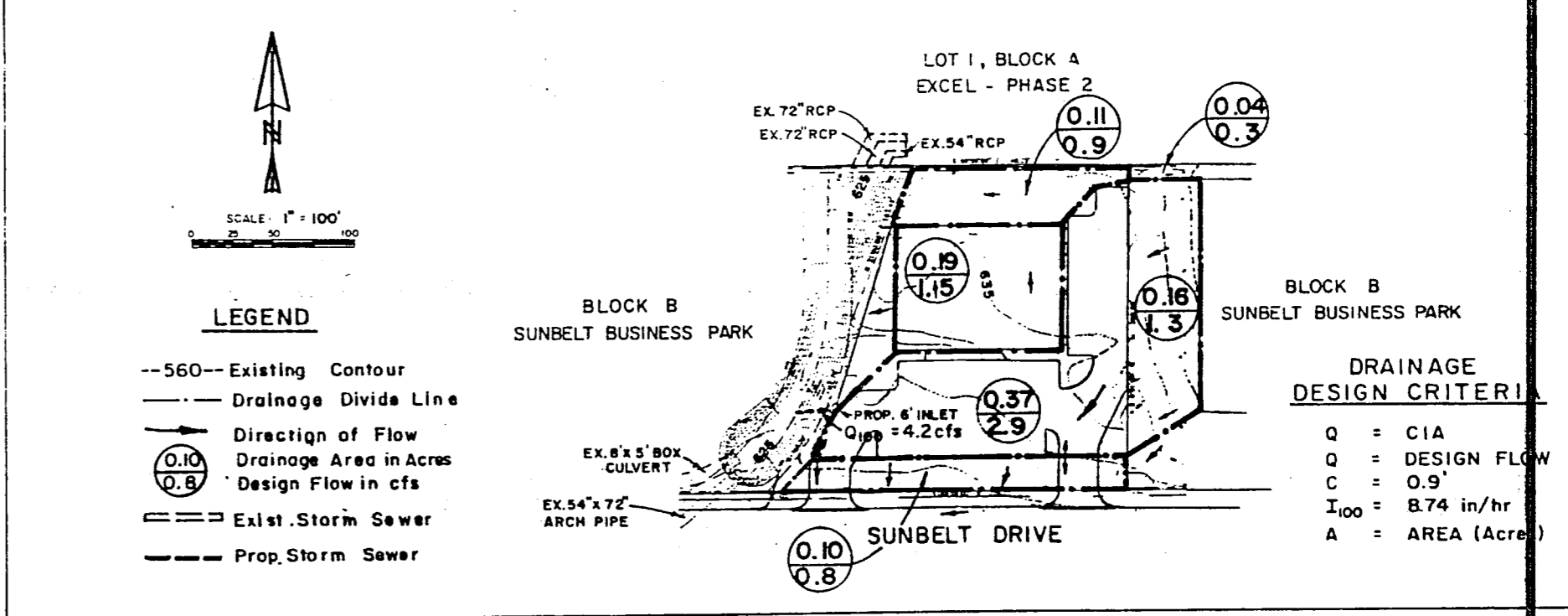
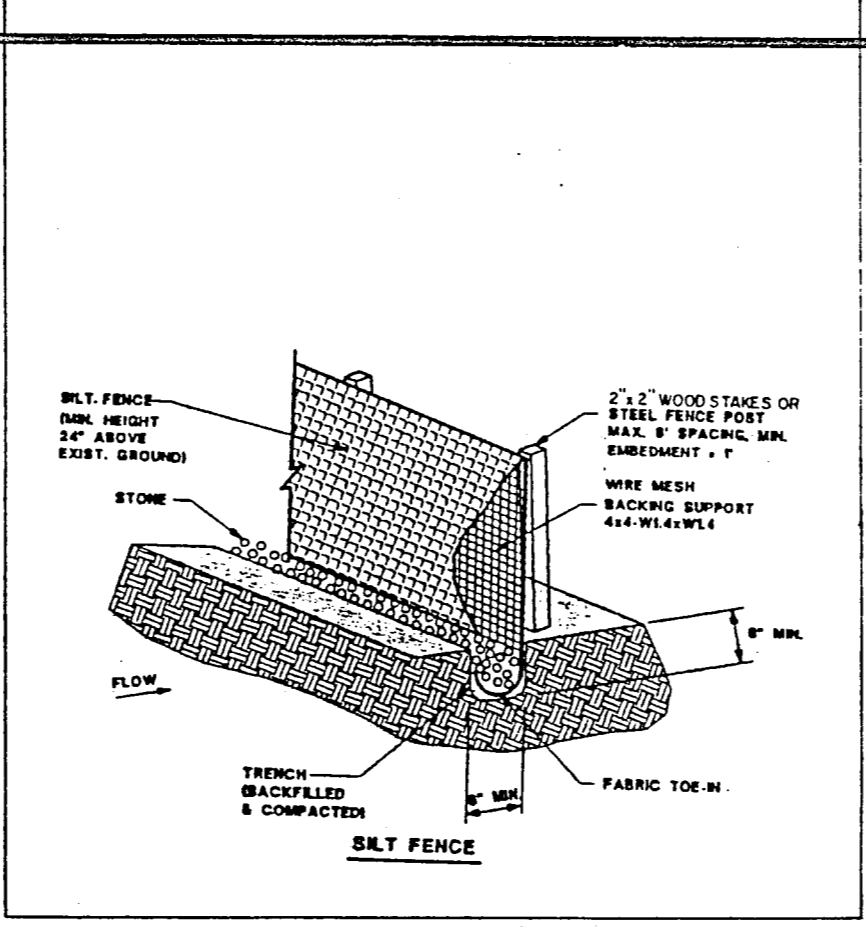
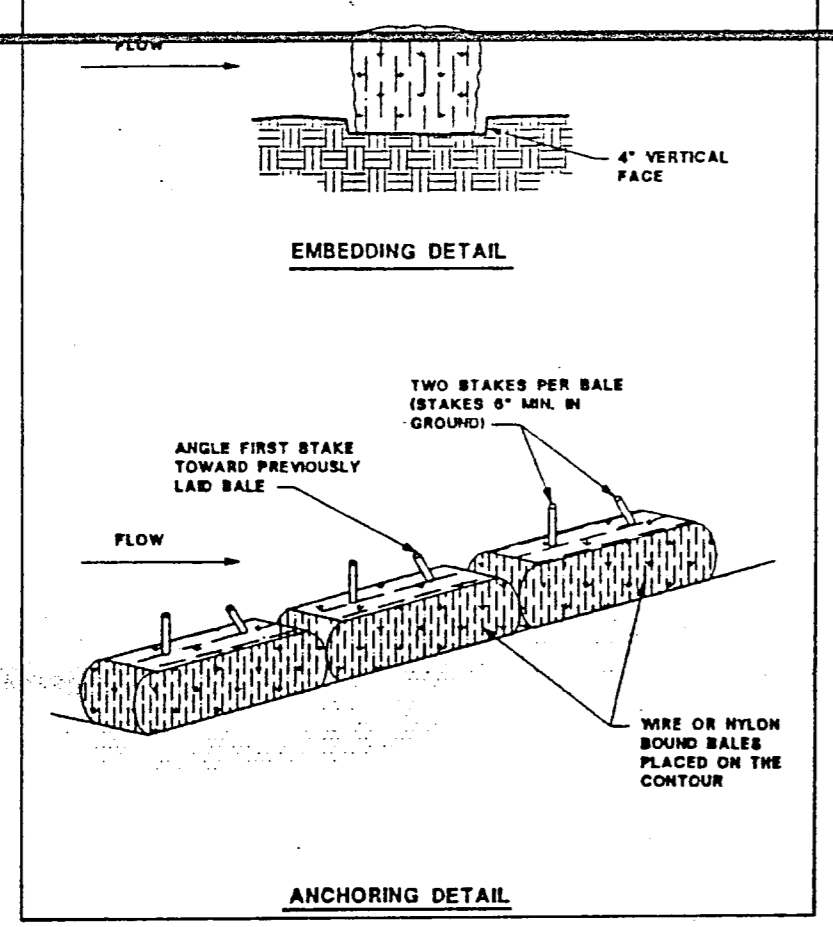
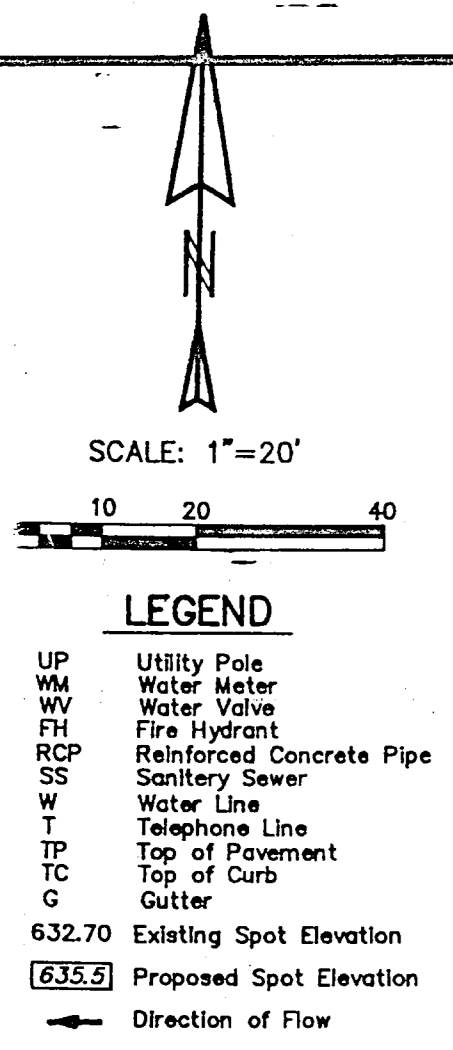


CITY COPY
4385 SUNBELT



INSPECTION REVIEW	HOLD	APPROVED	REVIEWED BY
BUILDING		1-10-97	LOC
PLUMBING		4-10-97	LOC
ELECTRICAL		4-10-97	LOC
MECHANICAL		4-10-97	LOC
ZONING			
HEALTH			

DEPARTMENTAL REVIEW	HOLD	APPROVED	REVIEWED BY
FIRE			
ENGINEERING		4-10-97	DCN
UTILITIES		4-10-97	DCN
STREETS		4-10-97	DCN
LANDSCAPE		4-11-97	DCN

- UPON COMPLETION OF PROJECT THE ARCHITECT MUST SUBMIT A LETTER STATING OLD AND SITE MEET ACCESSIBILITY REQ. OF CH 31 1991 UBC.
- SPECIAL INSPECTOR REQ. FOR ALL STRUCTURAL ELEMENTS.
- UPON COMPLETION OF PROJECT THE ENGINEER MUST SUBMIT A LETTER STATING BCD WAS CONSTRUCTED PER PLAN.
- FIRE SPRINKLERS REQ. SUBMIT PLANS TO FIRE DEPT FOR APPROVAL PRIOR TO INSTALLATION.
- LANDSCAPE ARCHITECT STAMP REQ. & REQ.

GRADING, DRAINAGE, WATER, SANITARY SEWER & EROSION CONTROL PLAN



NOTE: - See Dimension Control Plan for dimensions.
- Unless otherwise noted, all curbs are 6 inches high.

ALL DRAWINGS DEVELOPED BY B & R ARE THE SOLE PROPERTY OF B & R. REPRODUCTION OR USE OF THESE DOCUMENTS IS PROHIBITED.

REV.	DATE	DESCRIPTION

Customer Name - H.M.S. JEWELRY, INC.

Project Location - SUNBELT DR. ADDISON, TX

Date: 2/97 Design Load: UBC '91 Building Size: 76'x106'x15'

Scale: 1"=20' Job No. 2-J-97 DRAWING NO. A1 Issue No. 1