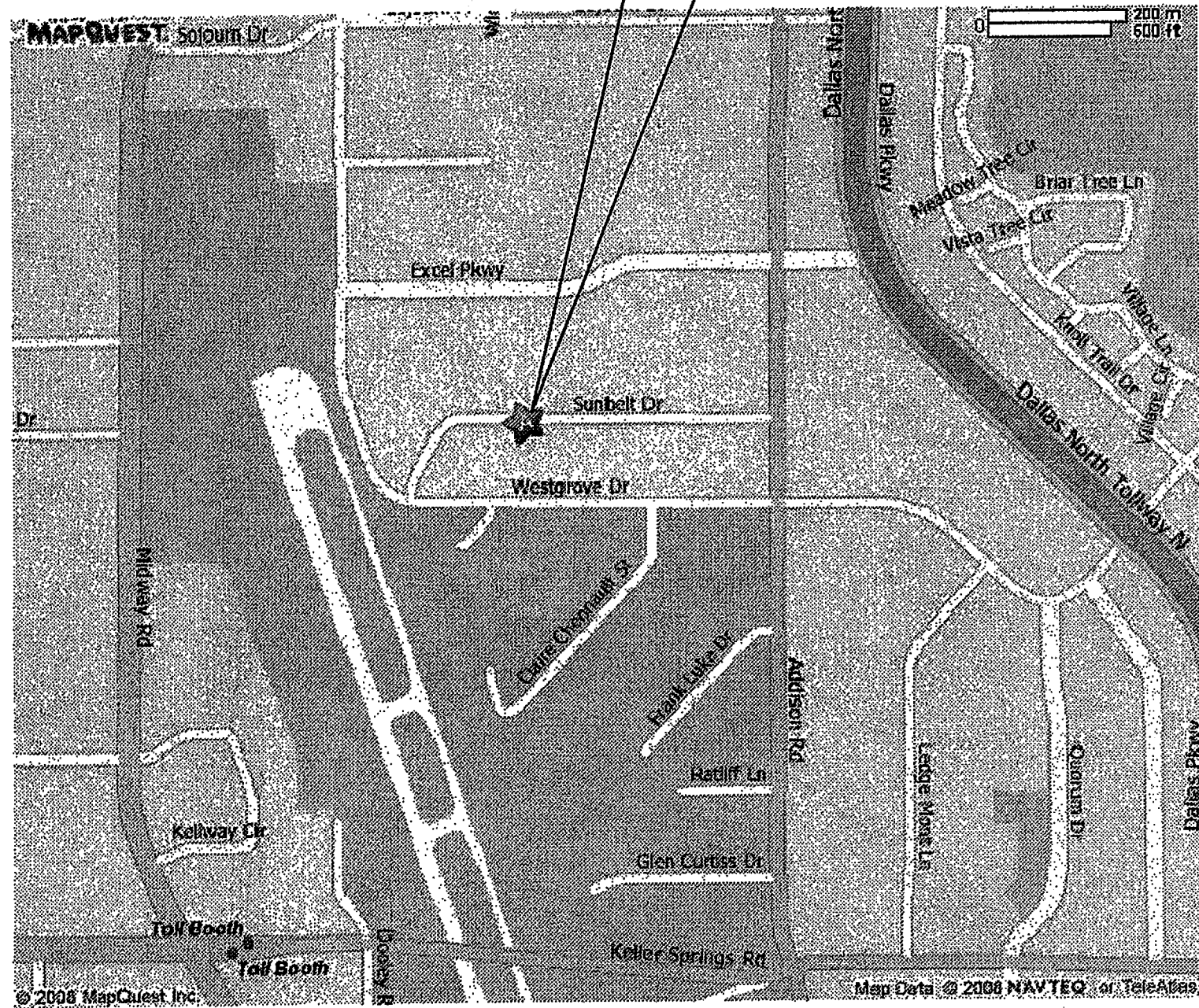


# JANI KING CALL CENTER

4393 SUNBELT DR.  
ADDISON, TEXAS 75001



Location Map

### ZONING / CODE ANALYSIS:

BUILDING CODE:	2006 INTERNATIONAL BUILDING CODE WITH ADDISON AMENDMENTS
PLUMBING CODE:	2006 INTERNATIONAL PLUMBING CODE WITH ADDISON AMENDMENTS
MECHANICAL CODE:	2006 INTERNATIONAL MECHANICAL CODE WITH ADDISON AMENDMENTS
ELECTRICAL CODE:	2006 INTERNATIONAL ELECTRIC CODE WITH ADDISON AMENDMENTS
FIRE PREVENTION CODE:	2006 INTERNATIONAL FIRE CODE WITH ADDISON AMENDMENTS
ENERGY CODE:	2006 INTERNATIONAL ENERGY CODE WITH ADDISON AMENDMENTS
OCCUPANCY GROUP:	B
BUILDING FULLY SPRINKLERED:	NEW SPRINKLER WORK PART OF SCOPE
NUMBER OF REQUIRED EXITS:	2 PER TABLE 1019.1
NUMBER OF EXITS PROVIDED:	5
MAXIMUM DISTANCE TO AN EXIT:	300' PER TABLE 1016.1
MAXIMUM DISTANCE DEAD END CORRIDOR:	50' PER SECTION 1017.3
SQUARE FOOTAGE:	11,162 USF
OCCUPANCY LOAD:	112 PERSONS

### T.A.S. REVIEW & FIELD INSPECTION:

THE TEXAS ACCESSIBILITY STANDARD PLAN REVIEW FOR THIS PROJECT WAS PROVIDED BY:

CONTACT NAME **TODD LOZANO**

**EDS**  
6101 WOODVIEW AVENUE  
AUSTIN TX 78757  
PHONE 888-641-0806  
FAX: 888-844-0473  
EMAIL: ecdaccess@sbcglobalnet

**OWNER PLEASE NOTE:**  
AT THE COMPLETION OF CONSTRUCTION, CONTACTING THE ABOVE ORGANIZATION FOR THE STATE MANDATED FIELD INSPECTION IS REQUIRED.

## INDEX OF DRAWINGS

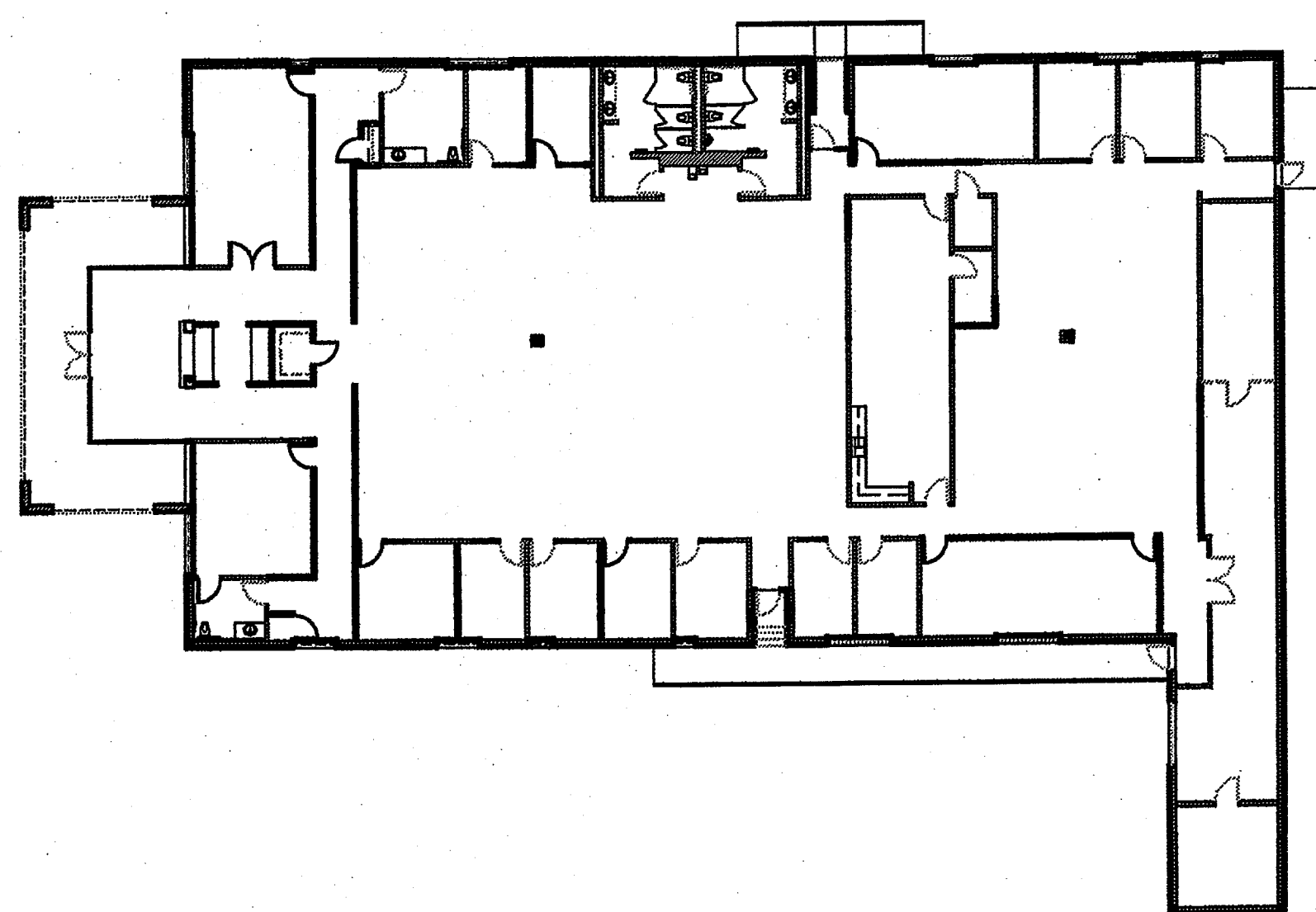
	RE-PERMIT 02/09/09	OWNER REVIEW W/ ADDENDUM 2: 02/04/09	PERMIT, PRICING, CONST 12/19/08
<b>GENERAL</b>			
A0.00 COVER SHEET	●	●	●
A0.01 GENERAL NOTES SPECIFICATIONS	●	●	●
A0.02 GENERAL NOTES SPECIFICATIONS	●	●	●
A0.03 TAS / ADA SHEET	●	●	●
A0.04 TAS / ADA SHEET	●	●	●
<b>CIVIL</b>			
C1 PAVEMENT REPLACEMENT PLAN	●	●	●
C2 WATER PLAN	●	●	●
C3 DETAILS SHEET	●	●	●
<b>ARCHITECTURAL</b>			
A1.00 SITE PLAN	●	●	●
A2.00 DEMOLITION PLAN	●	●	●
A2.01 CONSTRUCTION PLAN	●	●	●
A7.01 REFLECTED CEILING PLAN	●	●	●
A8.01 ELECTRICAL PLAN	●	●	●
A8.02 FINISH PLAN	●	●	●
A8.04 INTERIOR ELEVATIONS/SECTIONS	●	●	●
A8.05 INTERIOR ELEVATIONS/SECTIONS	●	●	●
A9.01 DOOR AND WINDOW SCHEDULE	●	●	●
<b>MEP</b>			
MEP1.01 NOTES, SYMBOLS, AND ABBREVIATIONS	●	●	●
MEP1.02 NOTES, SYMBOLS, AND ABBREVIATIONS	●	●	●
MEP1.03 NOTES, SYMBOLS, AND ABBREVIATIONS	●	●	●
M1.01 LIGHTING PLAN	●	●	●
M1.02 ROOF PLAN MECHANICAL DEMOLITION	●	●	●
M2.01 MECHANICAL PLAN	●	●	●
M2.02 ROOF PLAN MECHANICAL	●	●	●
M3.01 MECHANICAL DETAILS	●	●	●
M4.01 SCHEDULES	●	●	●
P2.01 PLUMBING PLAN	●	●	●
P3.01 PLUMBING SCHEDULES AND DETAILS	●	●	●
E2.01 LIGHTING PLAN	●	●	●
E3.01 POWER PLAN	●	●	●
E3.02 ROOF PLAN ELECTRICAL	●	●	●
E4.01 ELECTRICAL SCHEDULES & RISER DIAGRAMS	●	●	●

- GENERAL**
- A0.00 COVER SHEET
  - A0.01 GENERAL NOTES SPECIFICATIONS
  - A0.02 GENERAL NOTES SPECIFICATIONS
  - A0.03 TAS / ADA SHEET
  - A0.04 TAS / ADA SHEET

- CIVIL**
- C1 PAVEMENT REPLACEMENT PLAN
  - C2 WATER PLAN
  - C3 DETAILS SHEET

- ARCHITECTURAL**
- A1.00 SITE PLAN
  - A2.00 DEMOLITION PLAN
  - A2.01 CONSTRUCTION PLAN
  - A7.01 REFLECTED CEILING PLAN
  - A8.01 ELECTRICAL PLAN
  - A8.02 FINISH PLAN
  - A8.04 INTERIOR ELEVATIONS/SECTIONS
  - A8.05 INTERIOR ELEVATIONS/SECTIONS
  - A9.01 DOOR AND WINDOW SCHEDULE

- MEP**
- MEP1.01 NOTES, SYMBOLS, AND ABBREVIATIONS
  - MEP1.02 NOTES, SYMBOLS, AND ABBREVIATIONS
  - MEP1.03 NOTES, SYMBOLS, AND ABBREVIATIONS
  - M1.01 LIGHTING PLAN
  - M1.02 ROOF PLAN MECHANICAL DEMOLITION
  - M2.01 MECHANICAL PLAN
  - M2.02 ROOF PLAN MECHANICAL
  - M3.01 MECHANICAL DETAILS
  - M4.01 SCHEDULES
  - P2.01 PLUMBING PLAN
  - P3.01 PLUMBING SCHEDULES AND DETAILS
  - E2.01 LIGHTING PLAN
  - E3.01 POWER PLAN
  - E3.02 ROOF PLAN ELECTRICAL
  - E4.01 ELECTRICAL SCHEDULES & RISER DIAGRAMS



KEY PLAN

SCALE: 1" = 20'-0"

# JANI KING

4393 SUNBELT DR.  
ADDISON, TEXAS 75001

© 2009 MERRIMAN ASSOCIATES/ARCHITECTS, INC.

### CLIENT CONTACT

**CHUCK SACKLEY**  
JANIKING  
16885 DALLAS PARKWAY  
ADDISON, TX 75001

CELL: 214.213.6287  
OFFICE: 972.378.5848  
EMAIL: mvsackley@verizon.net

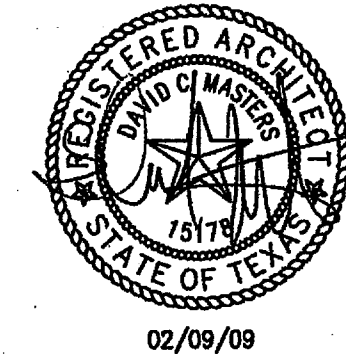
# A0.00

### Project Number

2008195

### Date

FEBRUARY 9, 2009



### Revisions

- △ ADDENDUM 1  
01-09-09
- △ ADDENDUM 2  
01-29-09

architects



merriman  
associates

architecture · planning  
interior design

300 N. FIELD ST.  
DALLAS, TEXAS 75202

214.987.1299

214.987.2138 (FAX)  
CONTACT: TRACY LEE

### CIVIL CONSULTANT

O'DONALD ENGINEERING

BRANDON O'DONALD

1601 EAST LAMAR BLVD.  
#116  
ARLINGTON, TX 76011  
PH: 817.794.0202  
FAX: 817.548.8430  
EMAIL: brandon@odengineering.com

### STRUCTURAL CONSULTANT

TECHNISTRUCTURES INC.

KEITH LESLIE

5220 MCKINNEY AVE.  
SUITE 300  
DALLAS, TX  
PH: 214.528.1725  
FX: 214.528.1728  
EMAIL: keith@technistructures.com

### MEP CONSULTANT

S. TOUB & ASSOCIATES

SAM TOUB

13641 OMEGA ROAD  
DALLAS, TX 75244  
PH: 972.386.5629  
FX: 972.386.7274  
EMAIL: stoub@stoubandassociates.com

4535 SUNBELT