



02/09/09

JANI KING CALL CENTER
4393 SUNBELT DRIVE
ADDISON, TEXAS

© 2009
MERRIMAN ASSOCIATES/
ARCHITECTS, P.C.

REVISIONS

- ▲ ADDENDUM 1
01-09-09
- ▲ ADDENDUM 2
01-29-09

PROJECT NUMBER:
2008195

ISSUE:
FEBRUARY 9, 2009

SHEET NAME:
REFLECTED CEILING
PLAN

SHEET:

A7.01

LEGEND OF SYMBOLS:

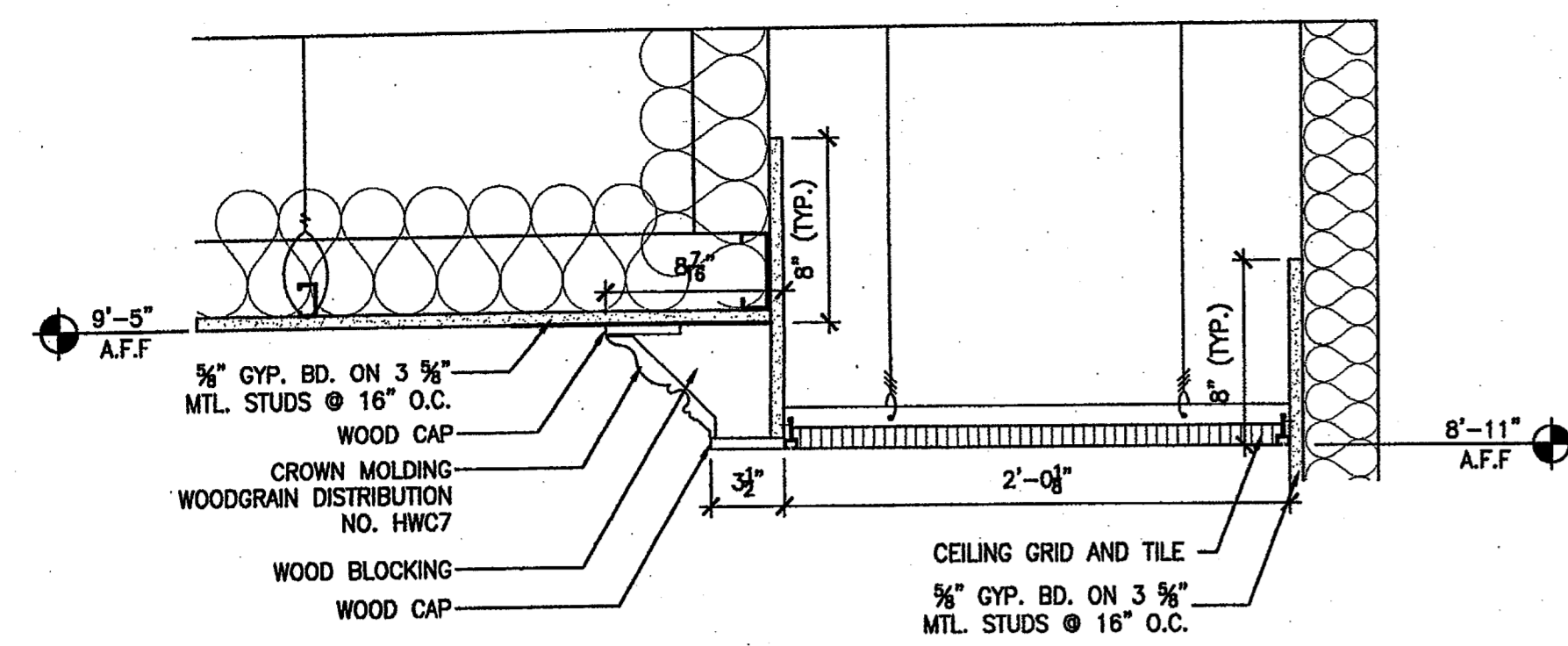
- NEW 24"x48" CEILING GRID & TILE; ARMSTRONG; CORTEGA 770 MEDIUM TEXTURE CEILING TILE IN 1/4" STANDARD GRID
- NEW GYPSUM BOARD CEILING @ 9'-0" A.F.F.
- 2X4 FLUORESCENT PARABOLIC FIXTURE
- 1X4 FLUORESCENT FIXTURE
- EXISTING RECESSED DOWNLIGHT TO REMAIN
- NEW DOWNLIGHT
- EXIT LIGHT SHOWING DIRECTION. WALL MOUNT WHERE POSSIBLE
- EXIT LIGHT. WALL MOUNT WHERE POSSIBLE
- DENOTES CEILING HEIGHT

REFLECTED CEILING PLAN KEY NOTES: "1"

- 1 NOT USED.
- 2 EXISTING CEILING AND LIGHTS TO REMAIN. PATCH AS REQ'D. PAINT GYP. BD. CEILING PT-3.
- 3 NEW GYP. BD. RECESSED CEILING. PAINTED PT-3.

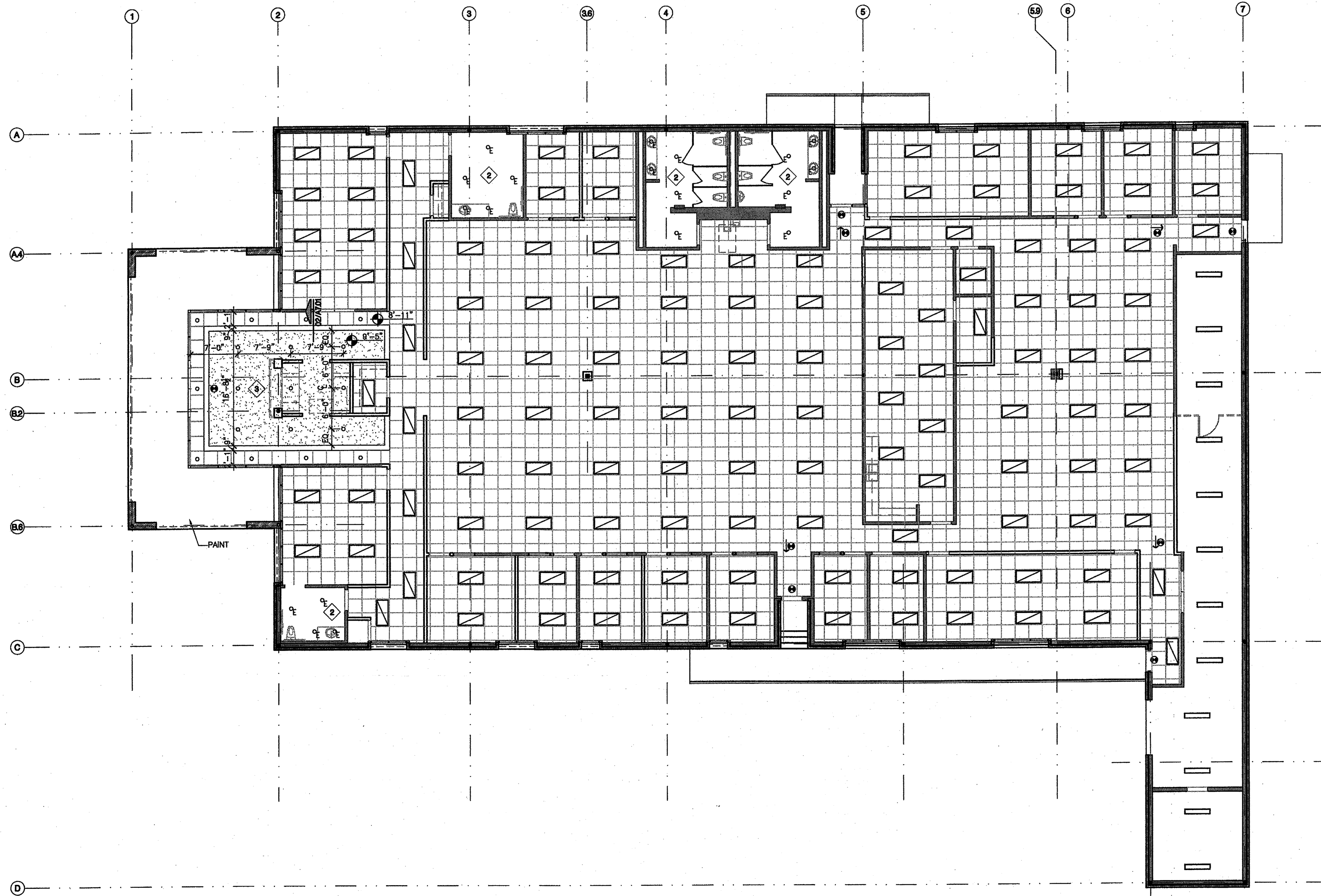
REFLECTED CEILING PLAN GENERAL NOTES:

- 1. REFER TO SHEET AB.02 FOR CEILING TILE SPEC.



02 CEILING DETAIL

SCALE: 1-1/2" = 1'-0"



01 REFLECTED CEILING PLAN

SCALE: 1/8" = 1'-0"

