



JANI KING CALL CENTER
 4393 SUNBELT DRIVE
 ADDISON, TEXAS

© 2009
 MERRIMAN ASSOCIATES/
 ARCHITECTS, P.C.
 REVISIONS

PROJECT NUMBER:
 2008195
 ISSUE:
 FEBRUARY 9, 2009
 SHEET NAME:
 ELECTRICAL PLAN
 SHEET:

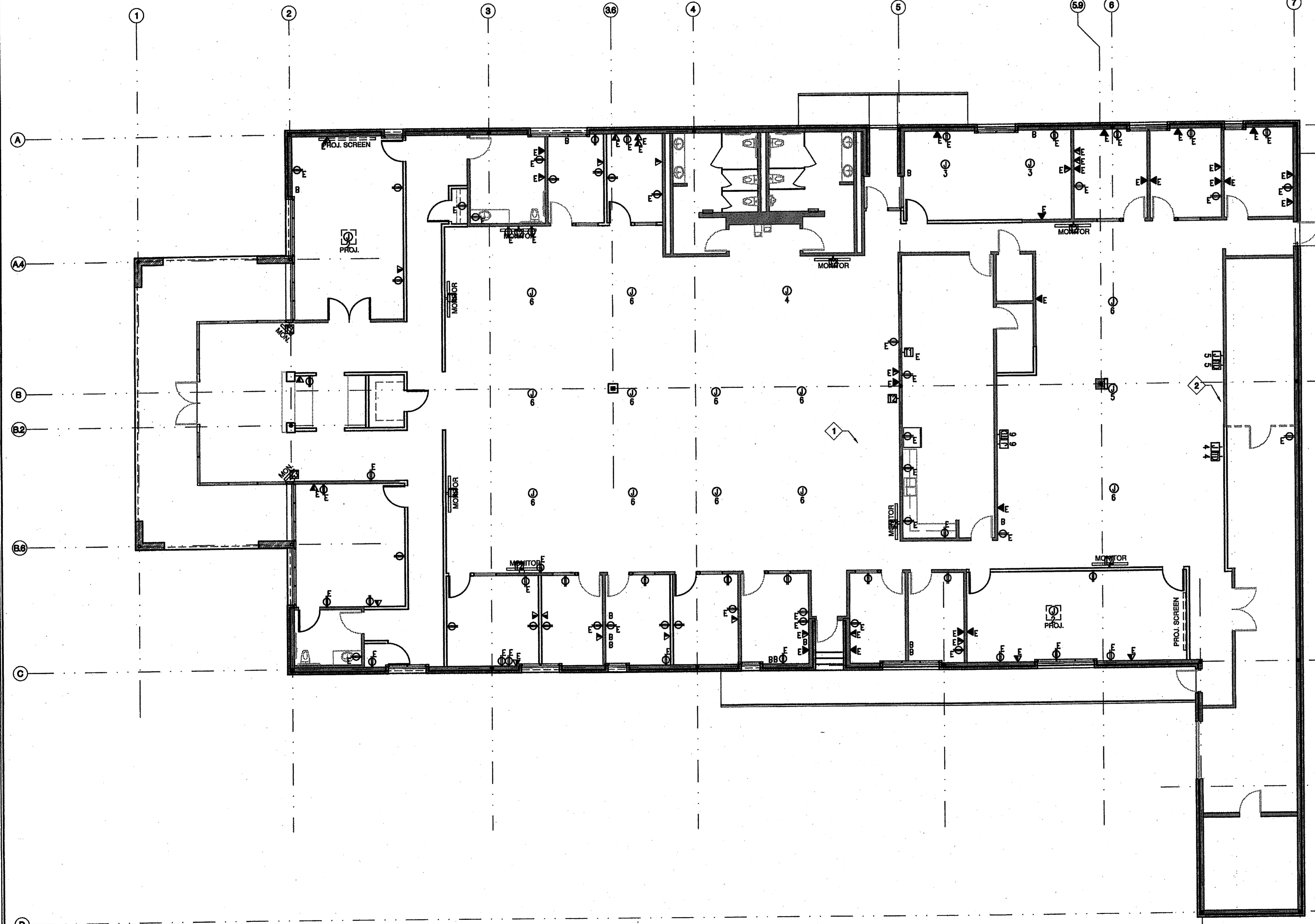
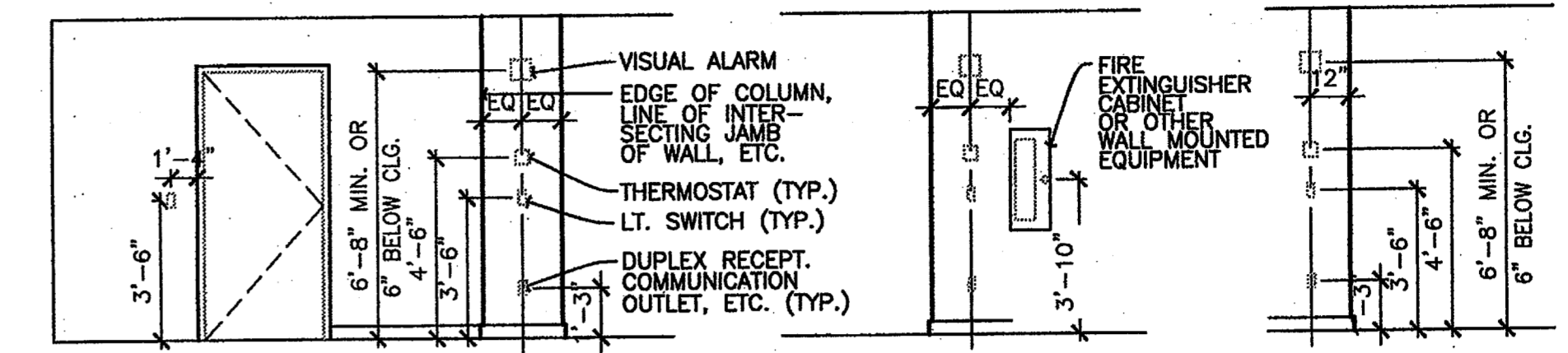
A8.01

LOCATION OF DEVICES

LAYOUT: LAYOUT: CONTRACTOR SHALL TAKE CARE IN THE LAYOUT OF HIS WORK & IN VERIFICATION OF ANY EXISTING CONDITIONS & DIMENSIONS. THE COORDINATION AND ALIGNMENT OF THIS WORK WITH ITSELF AND ADJACENT WORK IS OF PRIMARY IMPORTANCE AND SHOULD TAKE PRECEDENCE OVER WRITTEN DIMENSIONS, ESPECIALLY APPROXIMATE DIMENSIONS. THE INSTALLING CONTRACTOR SHALL LAYOUT HIS WORK AND VERIFY TO INSURE PROPER ALIGNMENT AND FIT. HE WILL REPORT ANY DISCREPANCIES TO THE PROJECT SUPERINTENDENT AND ARCHITECT.

LOCATION OF THERMOSTATS, ELECTRICAL DEVICES, LIGHTING, LIFE SAFETY DEVICES, ETC.:

- 1) DEVICES INSTALLED BY SEPARATE TRADES (SUCH AS LIGHT SWITCHES, THERMOSTATS, ETC.) INSTALLED IN THE SAME LOCATION, SHALL BE MOUNTED IN A CONFIGURATION ACCEPTABLE TO THE ARCHITECT.
 - A. DEVICES SHALL BE UNIFORMLY MOUNTED SO THEY WILL BE SYMMETRICAL, WHEN SHOWN ON THE MECHANICAL AND ELECTRICAL DRAWINGS AND NOT ON THE ARCHITECTURAL DRAWINGS. VERTICALLY ALIGN DEVICES MOUNTED ARE DIFFERENT HEIGHTS UNLESS SEPARATED HORIZONTALLY BY 24".
 - B. DEVICES INSTALLED IN MASONRY OR INSTALLED IN/MOUNTED TO SURFACES TO RECEIVE WOOD PANELS, WALL COVERING OR SIMILAR MATERIALS SHALL BE INSPECTED BY THE ARCHITECT/ENGINEER PRIOR TO ROUGH-IN.
- 2) WHEN IN DOUBT, CHECK WITH THE ARCHITECT/ENGINEER PRIOR TO ROUGH-IN. ALL COSTS TO CORRECT DEVIATIONS FROM THESE PRINCIPLES WILL BE THE RESPONSIBILITY OF THE INSTALLING CONTRACTOR.



LEGEND OF SYMBOLS:

- ⊕ E EXISTING WALL MOUNTED DUPLEX ELECTRICAL OUTLET TO REMAIN
- ⊕ E E EXISTING WALL MOUNTED QUADRAPLEX ELECTRICAL OUTLET TO REMAIN
- ▲ E EXISTING WALL MOUNTED TELEPHONE/DATA OUTLET TO REMAIN
- ▲ E EXISTING WALL MOUNTED TELEPHONE OUTLET TO REMAIN
- ⊕ NEW WALL MOUNTED TELEPHONE/DATA OUTLET
- ⊕ NEW WALL MOUNTED DUPLEX ELECTRICAL OUTLET
- B BLANK OUTLET
- ⊠ WALL JUNCTION BOX (POWER)- SHOWN WITH QUANTITY REQUIRED
- ⊠ WALL JUNCTION BOX (TELE/DATA)- SHOWN WITH QUANTITY REQUIRED
- ⊙ CEILING JUNCTION BOX (POWER/TELE/DATA)- SHOWN WITH QUANTITY REQUIRED
- ⊠ EXISTING ELECTRICAL FOR TV MOUNTED ON WALL
- ⊠ TV ON WALL MOUNTED SUPPORT. PROVIDE ELECTRICAL AT 6'-8" AFF
- ⊠ TV ON WALL MOUNTED SUPPORT. PROVIDE ELECTRICAL AND CABLE AT 6'-8" AFF

ELECTRICAL PLAN GENERAL NOTES:

1. REPLACE ANY EXISTING BROKEN DEVICES WITH MATCHING STYLE AND COLOR.
2. ALL EXISTING ELECTRICAL TO REMAIN, U.N.O.

ELECTRICAL PLAN KEY NOTES: "◇"

- ◇ 1 RELOCATE EXISTING SECURITY PANEL.
- ◇ 2 RELOCATE EXISTING TELEPHONE SWITCH.

01 ELECTRICAL PLAN
 SCALE: 1/8" = 1'-0"

