

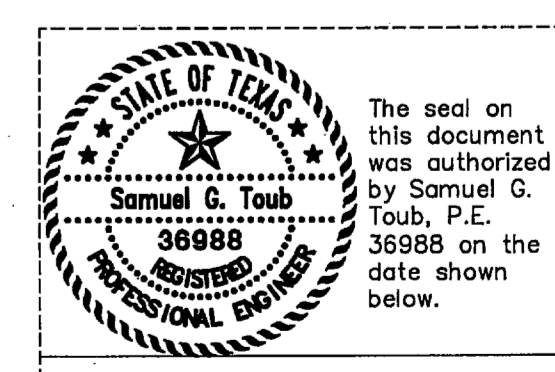
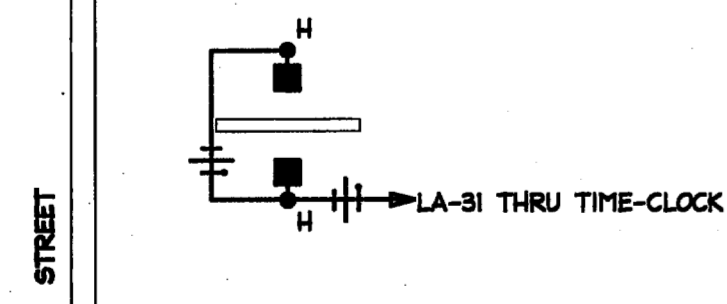
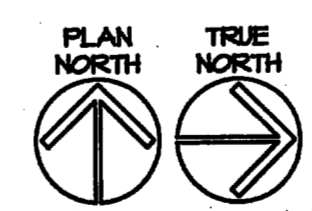
MOTION SENSOR SYMBOL LEGEND		
SYMBOL	DESCRIPTION	CATALOG NUMBER
⊕	CEILING MOUNTED, 360°, DUEL TECHNOLOGY OCCUPANCY SENSOR.	CM-PDT-10
⊖	HALL MOUNTED, 180°, LINE VOLTAGE, DUEL TECHNOLOGY OCCUPANCY SENSOR WITH INTEGRAL SWITCH.	LMS-PDT
⊞	OCCUPANCY SENSOR CONTROLLED POWER PACK (24 VOLT CONTROL).	
—	LOW VOLTAGE CONTROL WIRING (3 @ 16 AWG) FROM OCCUPANCY SENSORS TO POWER PACKS.	
—	RELAYED HOT LEG FROM POWER PACK, ACTIVATED BY OCCUPANCY SENSOR.	

GENERAL NOTES:

1. ALL LIGHTING FIXTURES SHALL BE TYPE 'A' UNLESS INDICATED OTHERWISE.
2. ALL CONDUIT NOT NOTED SHALL CONTAIN A SWITCH LEG AND NEUTRAL.
3. CONNECT EXIT SIGNS (TYPE 'X') AND EMERGENCY LIGHTING FIXTURES (TYPE 'C') TO NEAREST LIGHTING CIRCUIT BYPASSING THE RELAY PACK.

02 PARTIAL SITE PLAN - SIGN LIGHTING
SCALE: NO SCALE

01 FLOOR PLAN - LIGHTING
SCALE: 1/8"=1'-0"



Samuel G. Toub
2009.02.09
14:16:38 -06'00'

Project # 9400
S. Toub & Associates Inc.
Consulting Engineers Mechanical / Electrical
13541 Omega Road, Dallas, Texas 75244
972/985-9829
© COPYRIGHT 2008

JANI KING CALL CENTER
4393 SUNBELT DRIVE
ADDISON, TEXAS

PROJECT NUMBER: 2009155
DATE: FEBRUARY 9, 2009
SHEET TITLED: FLOOR PLAN LIGHTING
SHEET NUMBER: E2.01