

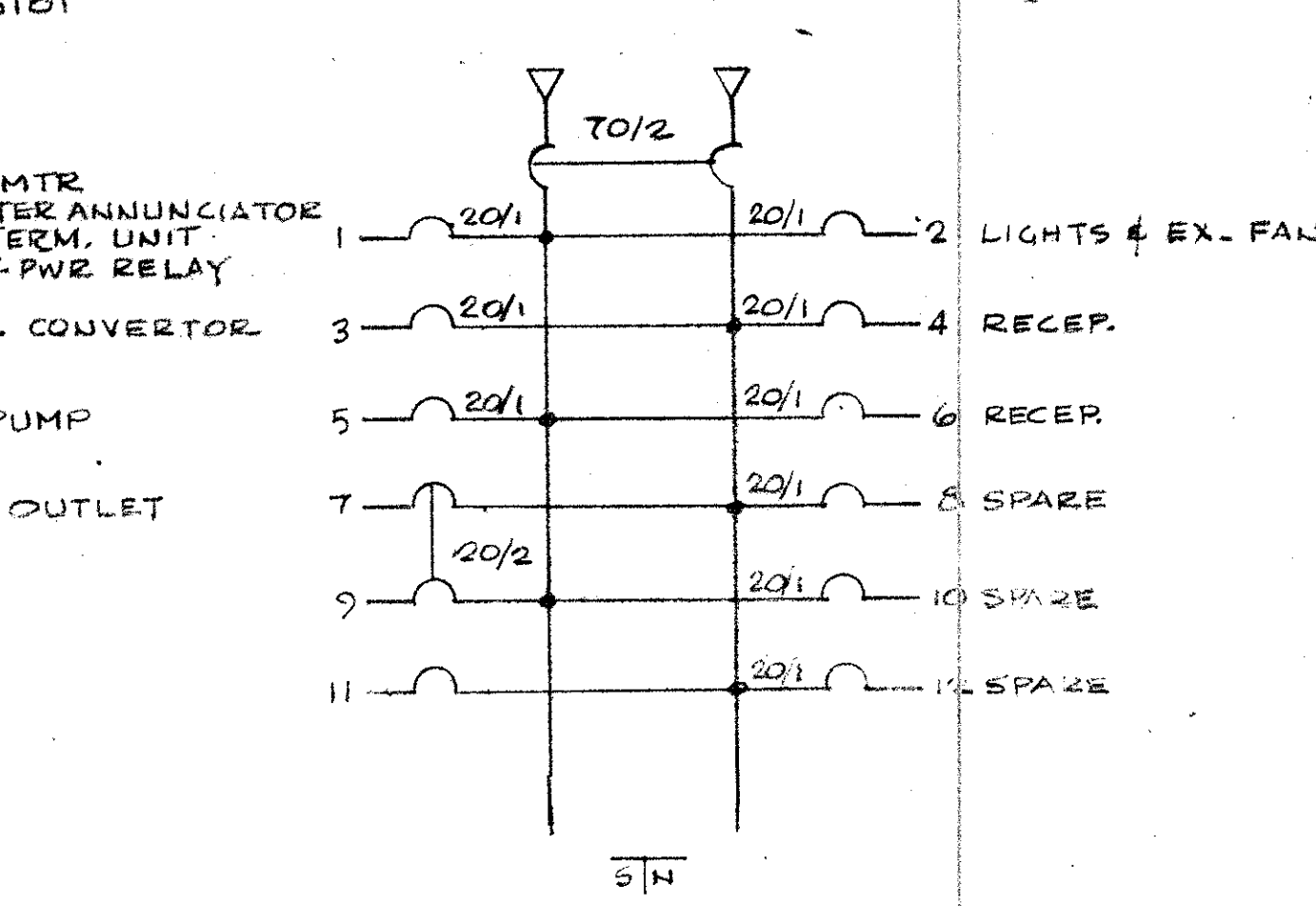
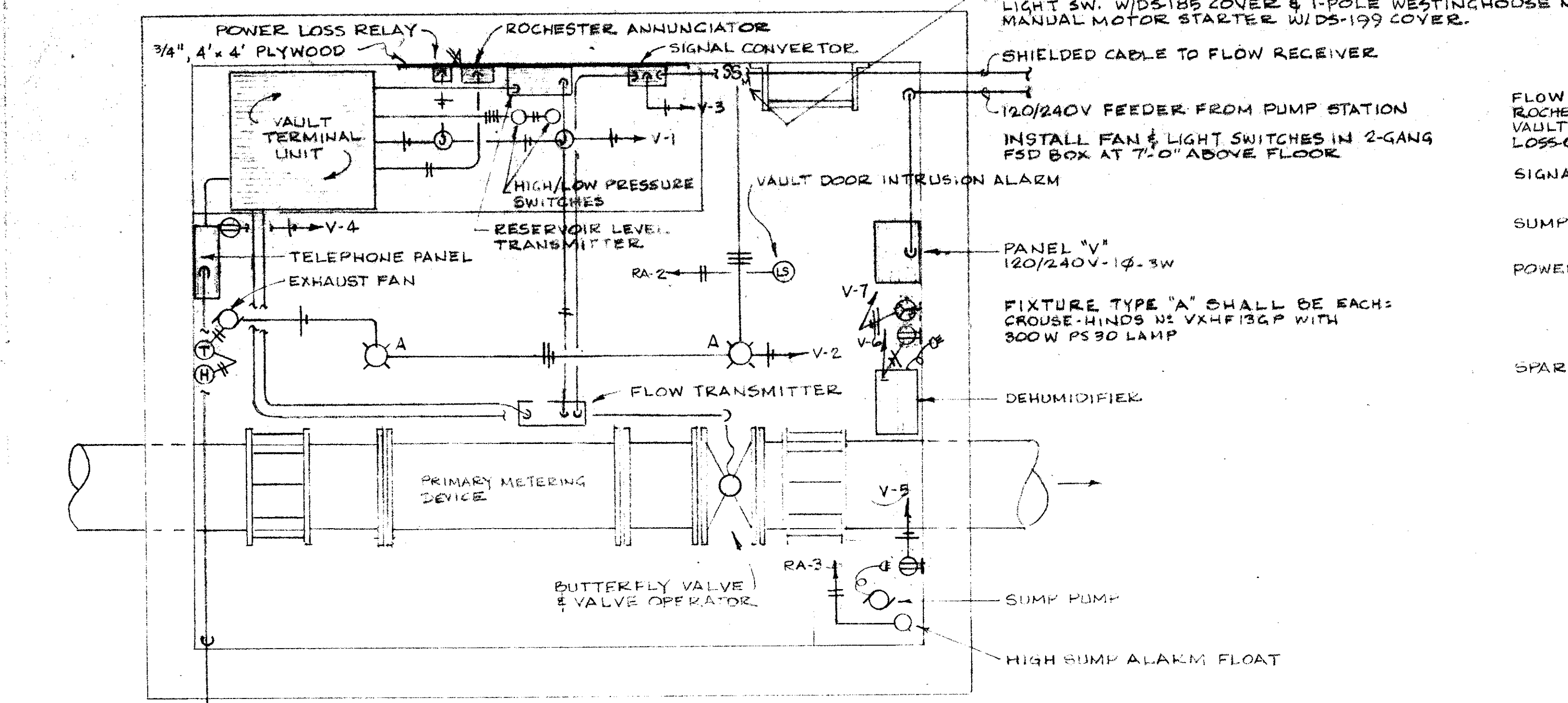
LEGEND

| SYMBOL | DESCRIPTION |
|--------|---|
| —●— | WIRING RUN, HOME-RUN SHOWN WITH HOT, NEUTRAL, & EGC |
| ○ | INCANDESCENT LIGHTING FIXTURE |
| S | SPST SWITCH-HUBBELL #1221 |
| ⊕ | DUPLEX RECEPTACLE - SQ D # GFSR-115-B |
| ○ | MOTOR OUTLET |
| --- | UNDERGROUND CONDUIT RUN |
| EGC | EQUIPMENT GROUNDING CONDUCTOR |
| L5 | LIMIT SWITCH |
| ⊖ | THERMOSTAT |
| ⊕ | HUMIDISTAT |
| ○ | OUTLET - USE AS NOTED |
| → | CONDUIT RUN DOWNTURN |
| ⊗ | NEMA 6-20R, HUBBELL # 5462 |

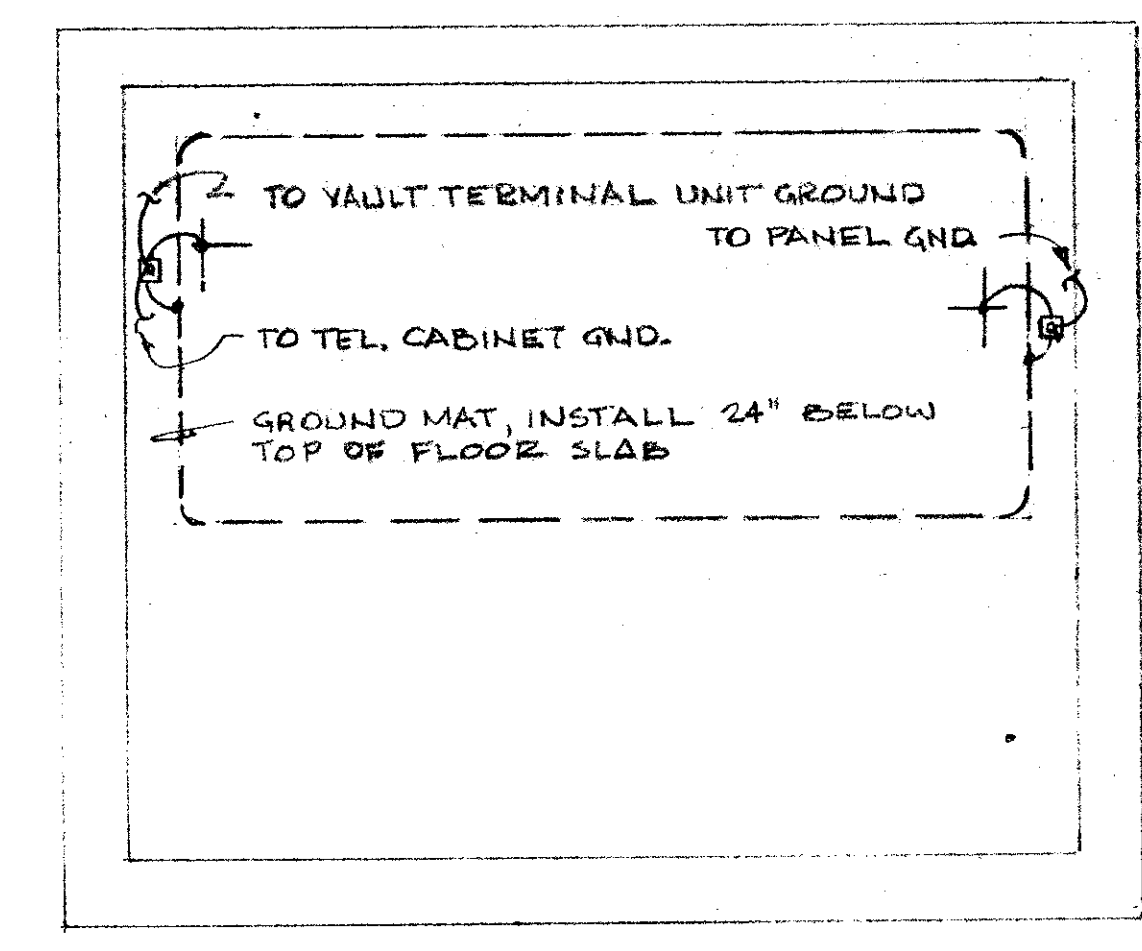
1 SITE PLAN
SCALE: 1" = 20'
← NORTH

3 TYPICAL HANDHOLE
SCALE: 1" = 1'-0"

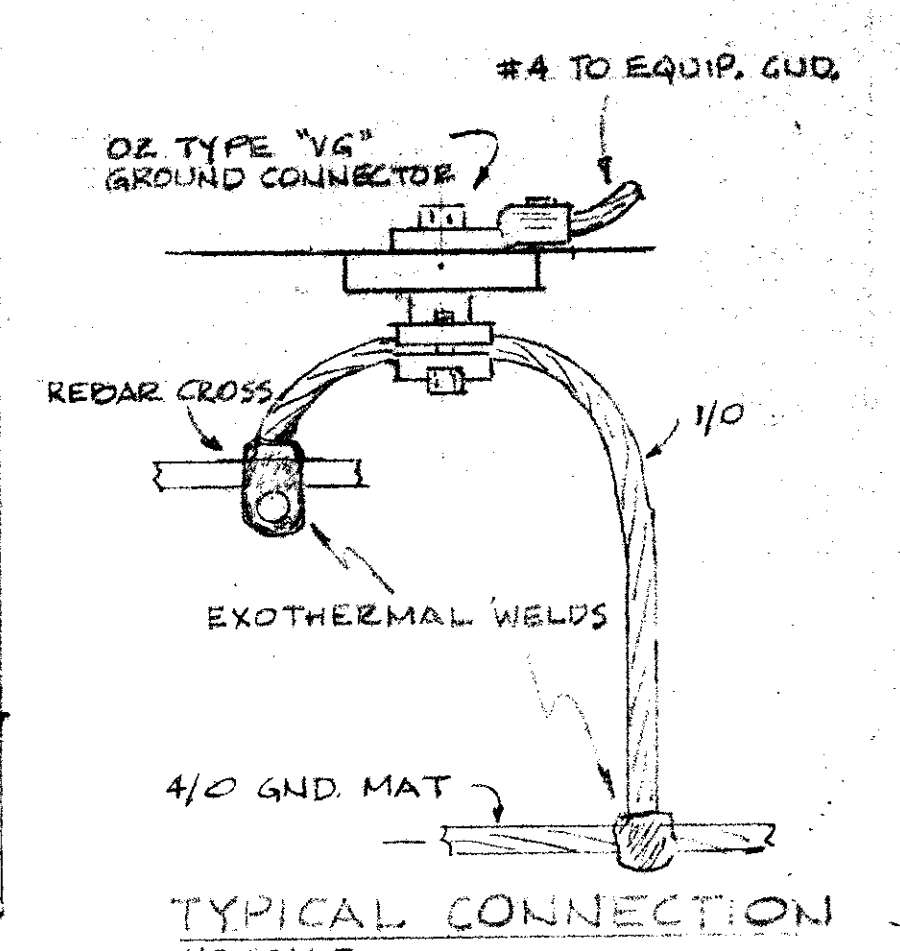
7 FLOAT DETAIL
NO SCALE



6 PANEL 'V' DIAGRAM



8 GROUNDING DETAILS
VAULT PLAN SCALE: 1/2" = 1'-0"



CITY OF DALLAS FILE NO. 6810-21

**CITY OF ADDISON
DALLAS COUNTY, TEXAS
WATER IMPROVEMENTS**

**RATE OF FLOW CONTROLLER
ELECTRICAL**

GINN & STACY, INC.
CONSULTING ENGR'S - DALLAS, TEXAS

Designed By: C.R.M. Scale: As Shown Sheet 5 of 6
Drawn By: C.R.M. Date: 1978

5 VAULT PLAN
SCALE: 3/4" = 1'-0"

