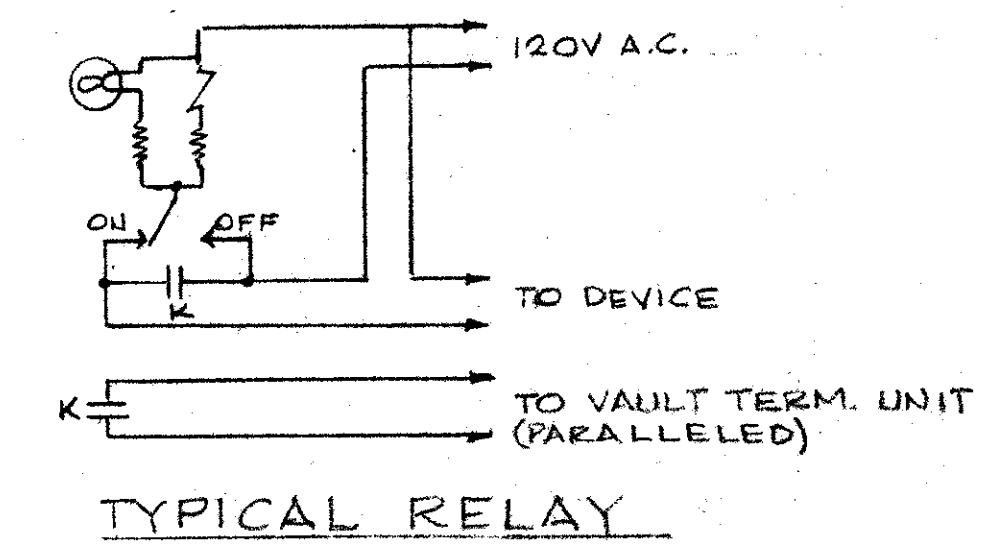
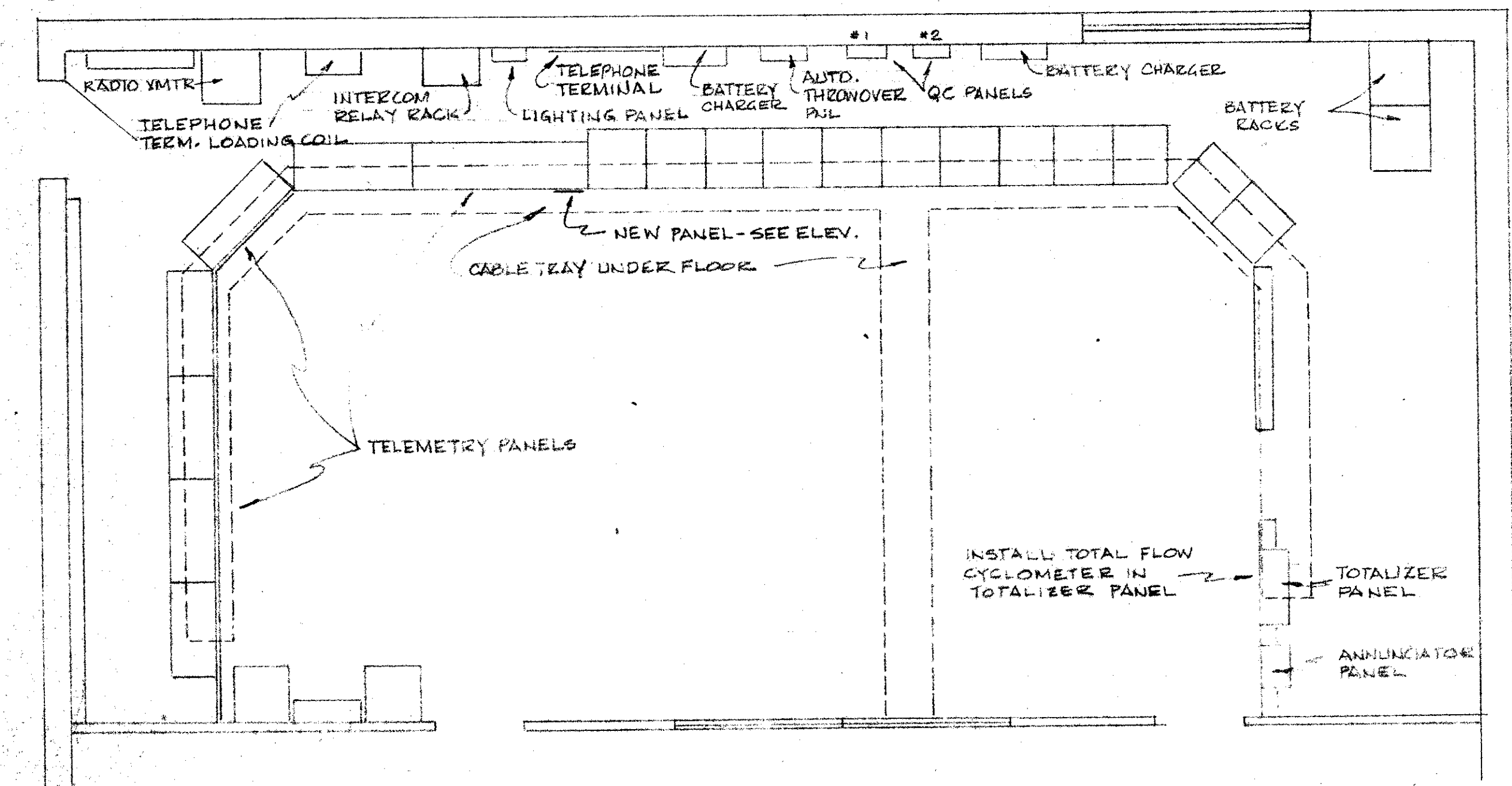


WIRING NOTES:  
 #1 BELDEN # 8760 #18 AWG, 1-PAIR SHIELDED \*  
 #2 18 AWG, 1-PAIR UNSHIELDED  
 #3 BELDEN # 9714 # 18 AWG, 6-PAIR SHIELDED \*  
 \* DO NOT RUN IN SAME CONDUIT WITH OTHER WIRING.



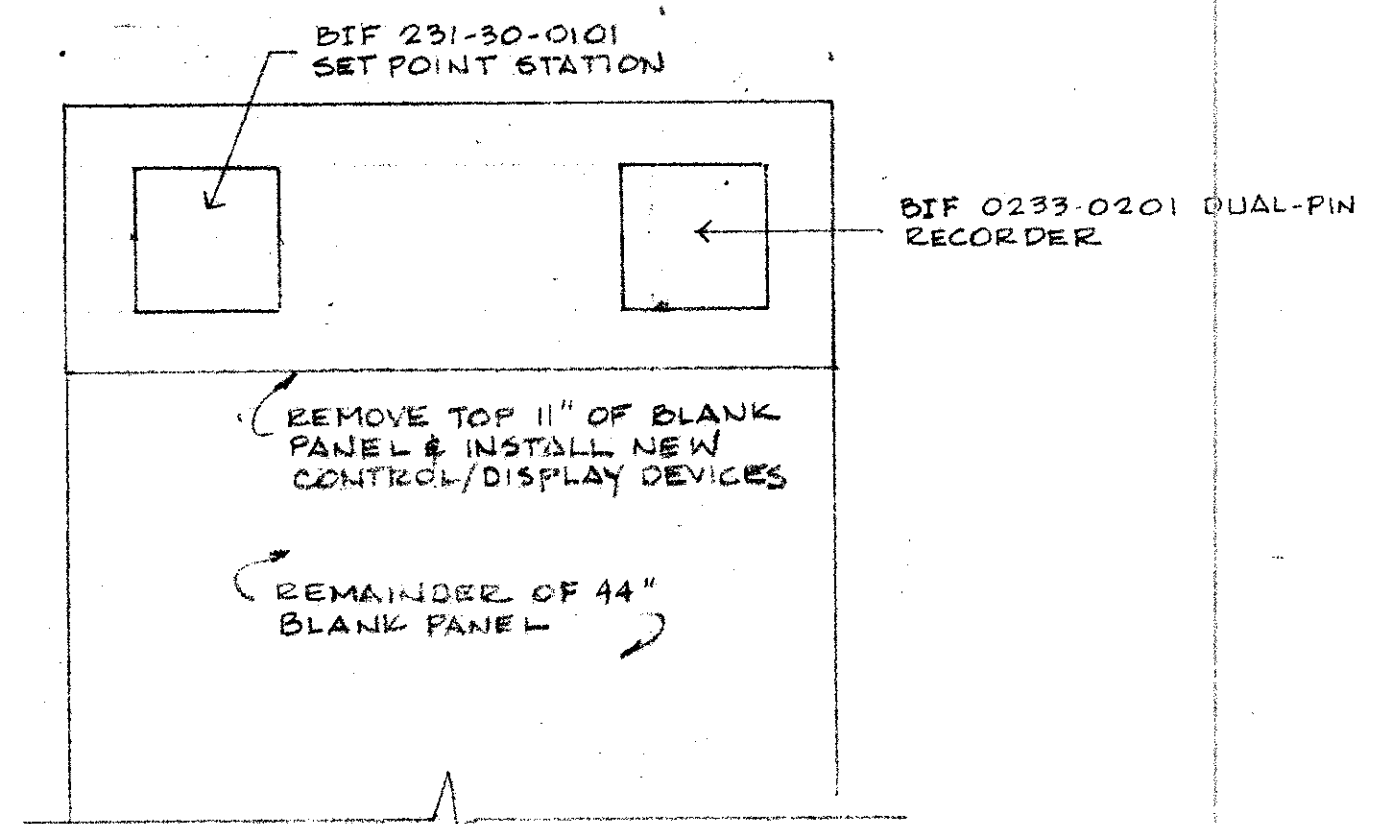
NOTE: CATALOG NUMBERS LISTED ARE BIF

1 INSTRUMENTATION RISER



3 CONTROL ROOM PLAN  
 SCALE: 1/4" = 1'-0"

4 ELEVATION of CONTROL ROOM PANEL  
 SCALE: 1/2" = 1'-0"



2 ANNUNCIATOR DETAILS

CITY OF DALLAS FILE NO. 6810-21

CITY OF ADDISON  
 DALLAS COUNTY, TEXAS  
 WATER IMPROVEMENTS

**RATE OF FLOW CONTROLLER ELECTRICAL**

GINN & STACY, INC.  
 CONSULTING ENGINEERS - DALLAS, TEXAS

Designed By: C.R.M. Scale: As Shown  
 Drawn By: C.R.M. Date: 1978

Sheet 6 of 6

