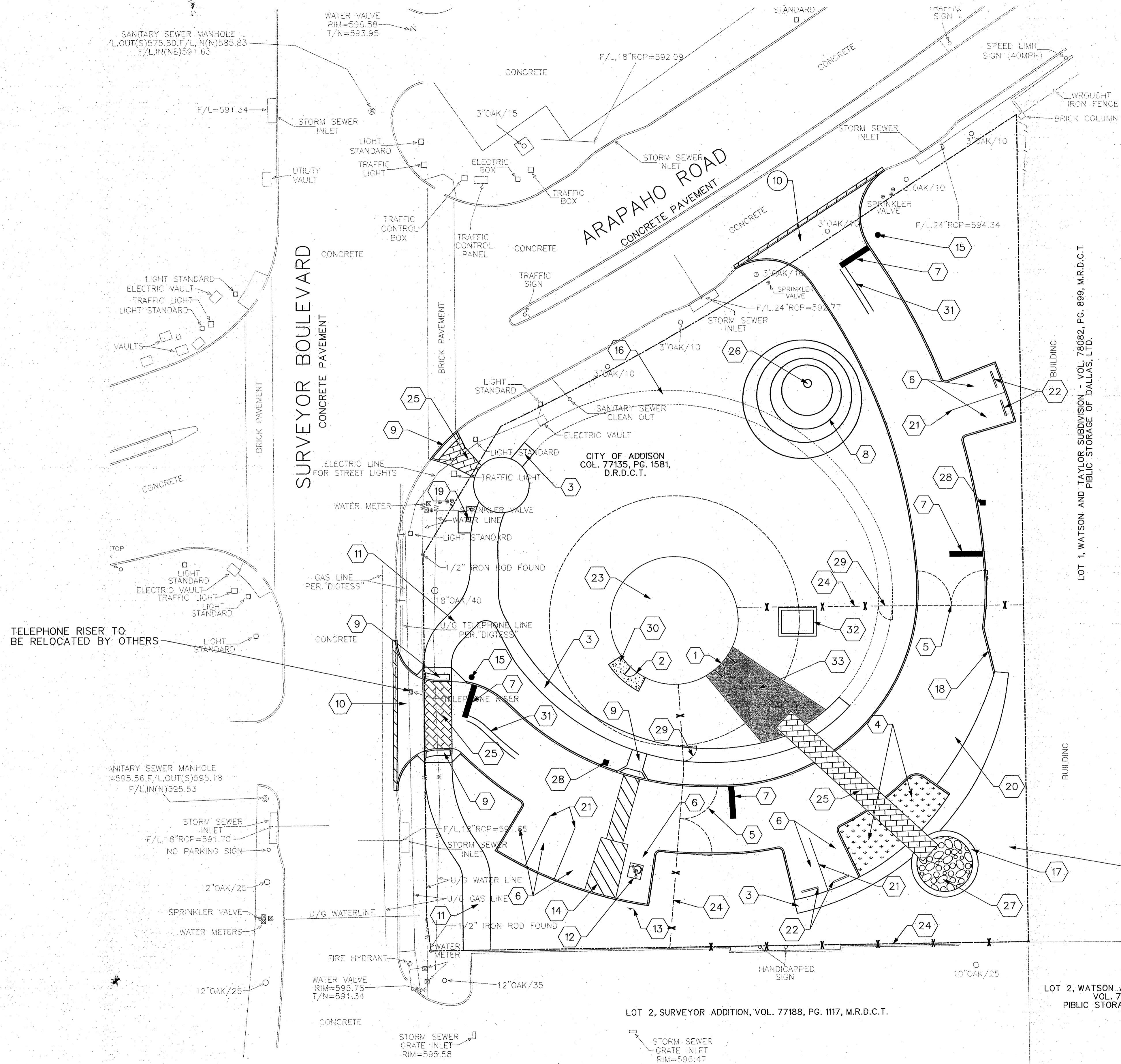


TOWN OF ADDISON, TEXAS
SURVEYOR 1.5 MG EST
CIVIL
SITE PLAN



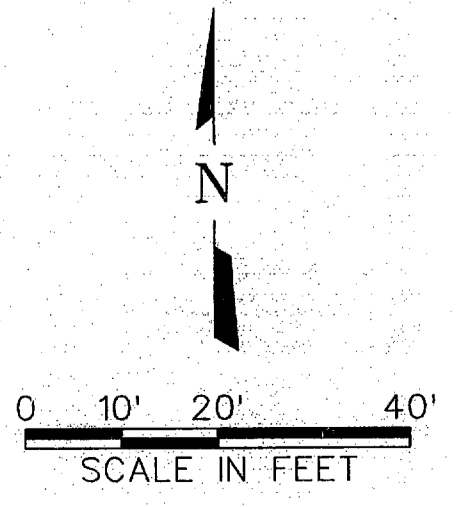
- NOTES BY SYMBOL**
1. DOUBLE DOORS (SEE ARCHITECTURAL PLANS)
 2. EMERGENCY EXIT MAN DOOR (SEE ARCH. PLANS)
 3. 5' CONCRETE SIDEWALK
 4. GRASS AREA
 5. 24' DOUBLE SWING GATE
 6. 10'X20' PARKING SPACES
 7. 24" WHITE THERMOPLASTIC STOP BAR
 8. LANDSCAPING BERM (SEE SHEET C-3)
 9. TYPE A HANDICAP RAMP SEE DT-09 FOR DETAILS
 10. DRIVEWAY APPROACH
 11. 10' CONCRETE SIDEWALK
 12. HANDICAP MARKER
 13. HANDICAP SIGN
 14. 6" WHITE STRIPE VAN ACCESSIBLE LANE
 15. STOP SIGN
 16. FUTURE 5' SIDEWALK
 17. LANDSCAPING WALL
 18. 10' CURB TAPER
 19. PROPOSED DRINKING FOUNTAIN WITH CONCRETE WALKWAY PAD
 20. PARKING SPACE FOR LARGE VEHICLES
 21. 4" WHITE PARKING LINE STRIPE
 22. CONCRETE PARKING WHEEL STOPS
 23. LEARNING CENTER IN PEDESTAL, SEE ARCHITECTURAL AND MEP PLANS
 24. PERIMETER FENCE
 25. PAVESTONE PAVERS, PROVIDE EDGE STRIP WHERE REQUIRED BY DETAIL SHEET DT-06
 26. TURBINE DISPLAY UNIT (BY OTHERS)
 27. DECOMPOSED GRANITE
 28. GATE ENTRY CARD READER
 29. 5' MANGATE
 30. CONCRETE LANDING WALK
 31. 4" DOUBLE YELLOW SOLID LINE, 20' LONG
 32. CONTROL VALVE VAULT
 33. BASE BID-REINFORCED CONC. SIDEWALK SECTION ALTERNATE BID-PAVESTONE PAVERS

LOT 1, WATSON AND TAYLOR SUBDIVISION - VOL. 78082, PG. 899, M.R.D.C.T.
PUBLIC STORAGE OF DALLAS, LTD.

REMAINDER OF LOT 1, WATSON SUBDIVISION, VOL. 79063, PG. 2188, M.R.D.C.T. PART OF LOT 1, WATSON SUBDIVISION CITY OF ADDISON, TEXAS VOL. 82004, PG. 2001, D.R.T.C.T.

LOT 2, WATSON AND TAYLOR SUBDIVISION VOL. 78082, PG. 899, PUBLIC STORAGE OF DALLAS, LTD.

LOT 2, SURVEYOR ADDITION, VOL. 77188, PG. 1117, M.R.D.C.T.



MicroStation V8
 Plotter: HP DesignJet 5000
 Date: 01/14/11 01:14:18 PM
 Project: Freese and Nichols, Inc.

NO.	ISSUES	DATE	BY	DATE	BY	DATE	BY	DATE	BY

FILE NO.	FILE NAME	CHECKED	DATE	REVISION	DATE	DESIGNED	DATE	DRAWN	DATE

VERIFY SCALE Bar is one inch on original drawing. If not one inch on this sheet, adjust scale.

SHEET **C-1**