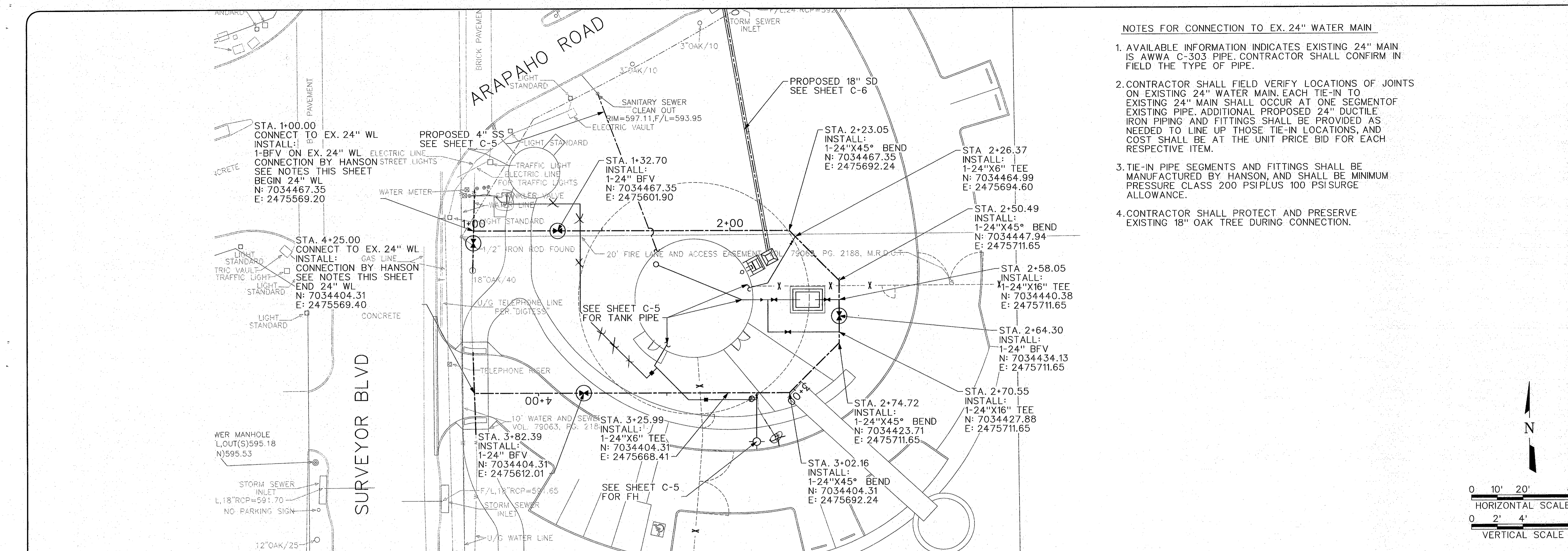
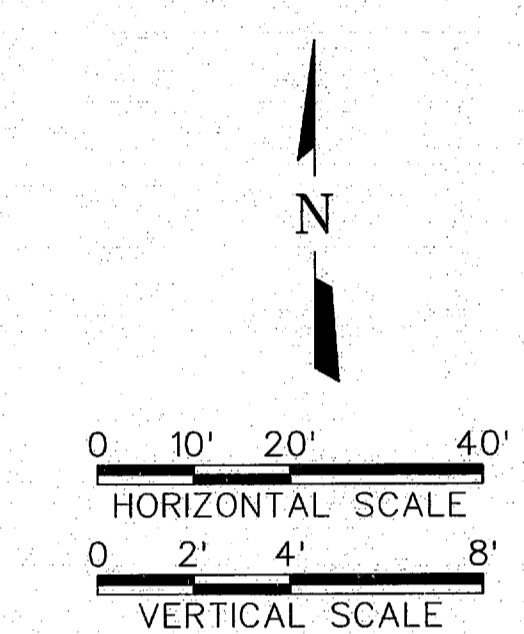


ADDRESS: WATER TANK-4-5-10.dwg
 DATE: 01/19/2011 01:25:31 PM
 USER: amr
 FILE: N:\F\Drawings\CV-EST-PP-WL01.SHT



- NOTES FOR CONNECTION TO EX. 24" WATER MAIN
1. AVAILABLE INFORMATION INDICATES EXISTING 24" MAIN IS AWWA C-303 PIPE. CONTRACTOR SHALL CONFIRM IN FIELD THE TYPE OF PIPE.
 2. CONTRACTOR SHALL FIELD VERIFY LOCATIONS OF JOINTS ON EXISTING 24" WATER MAIN. EACH TIE-IN TO EXISTING 24" MAIN SHALL OCCUR AT ONE SEGMENT OF EXISTING PIPE. ADDITIONAL PROPOSED 24" DUCTILE IRON PIPING AND FITTINGS SHALL BE PROVIDED AS NEEDED TO LINE UP THOSE TIE-IN LOCATIONS, AND COST SHALL BE AT THE UNIT PRICE BID FOR EACH RESPECTIVE ITEM.
 3. TIE-IN PIPE SEGMENTS AND FITTINGS SHALL BE MANUFACTURED BY HANSON, AND SHALL BE MINIMUM PRESSURE CLASS 200 PSI PLUS 100 PSI SURGE ALLOWANCE.
 4. CONTRACTOR SHALL PROTECT AND PRESERVE EXISTING 18" OAK TREE DURING CONNECTION.



605	STA. 1+41.50 PROPOSED 3/4" WL	STA. 1+68.57 PROPOSED 4" SS	EXISTING GROUND @ C OF PIPE	STA. 2+64.30 1-24" BFV	STA. 3+14.97 1-24"X6" TEE	STA. 3+25.99 PROPOSED 1-1/2" WL	605
600					VPI STA. 3+25.99 T.O.P. = 594.29		600
595							595
590							590
585							585
580	STA. 1+00.00 CONNECT TO EX. 24" WL FIELD VERIFY EX. 24" WL ELEVATION BEGIN 24" WL	STA. 1+78.57 END FLOWABLE FILL					580
575	EGL = 596.14 T.O.P. = 590.04	STA. 1+20.66 1-24" BFV					575
570		EGL = 597.66 T.O.P. = 591.67					570
		STA. 1+58.57 FLOWABLE FILL					
		EGL = 598.53 T.O.P. = 593.29					
		PROPOSED 18" SD					
		VPI STA. 2+23.05 T.O.P. = 594.04					
		STA. 2+26.37 1-24"X6" TEE					
		EGL = 598.82 T.O.P. = 594.10					
		STA. 2+58.05 1-24"X16" TEE					
		STA. 2+70.55 1-24"X16" TEE					
		EGL = 598.25 T.O.P. = 594.23					
		EGL = 597.50 T.O.P. = 593.14					
		STA. 3+82.39 INSTALL: 1-24" BFV					
		EGL = 596.54 T.O.P. = 590.74					
		STA. 4+25.00 CONNECT TO EX. 24" WL FIELD VERIFY					

TOWN OF ADDISON, TEXAS

FRESE & NICHOLS
 CIVIL
 2220 S. Jennings Blvd., Suite 330
 Dallas, TX 75215
 Phone: (940) 387-4800
 Fax: (940) 387-4677
 Web: www.frese.com

PROFESSIONAL ENGINEER
 LICENSE NO. 81073
 EXPIRES 1-19-11

PROJECT: SURVEYOR 1.5 MG EST
 SHEET: C-7

STA. 1+00 TO STA. 4+25.00
 24" WATER LINE PLAN AND PROFILE

NO.	ISSUES	BY	DATE	FRN JOB NO.	ADD08459

DATE: 01/21/11
 DESIGNED: RJK
 DRAWN: RUS
 REVISION: RUS
 CHECKED: RUS

FILE NAME: CV-EST-PP-WL01.SHT

VERIFY SCALE Bar is one inch on original drawing. If not one inch on this sheet, adjust scale.