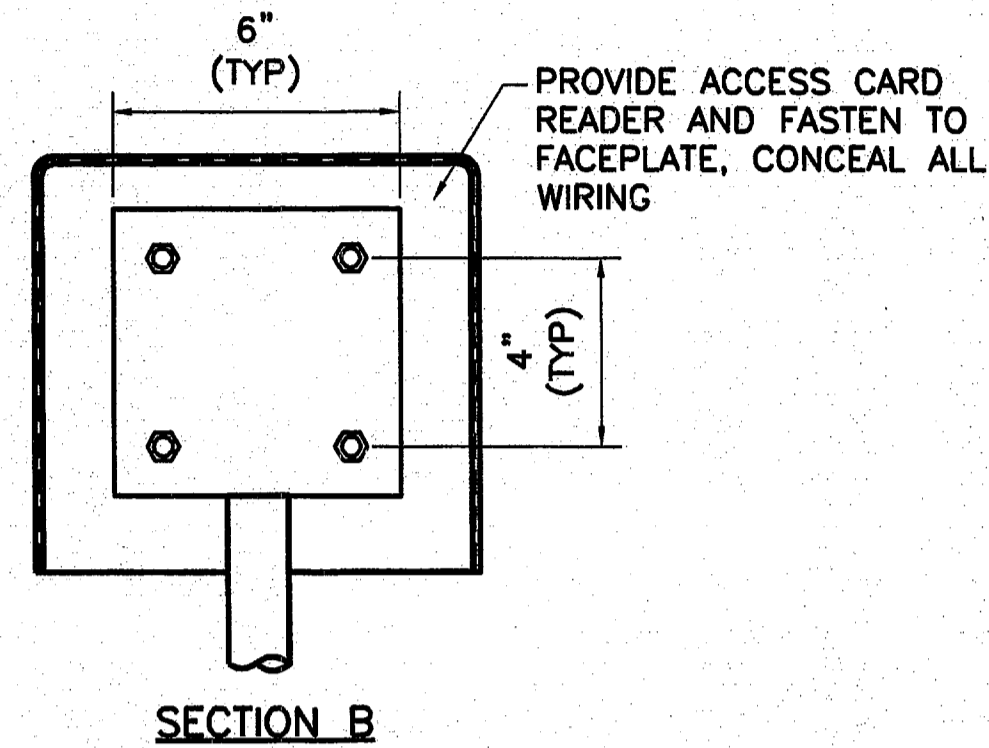


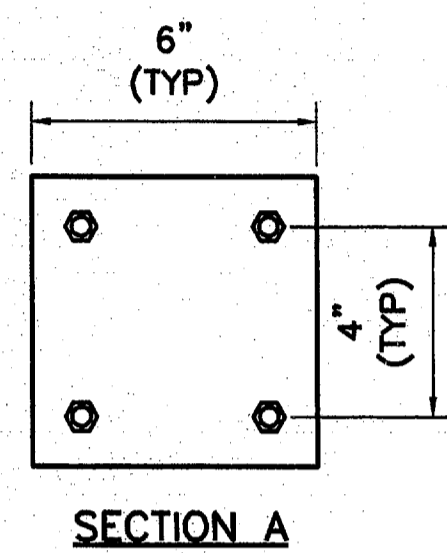
NO.1 GENERAL NOTES:
 1. MOUNTING HARDWARE AND BOLTS SHALL BE STAINLESS STEEL.

1 MOUNTING POST DETAIL
 NOT TO SCALE



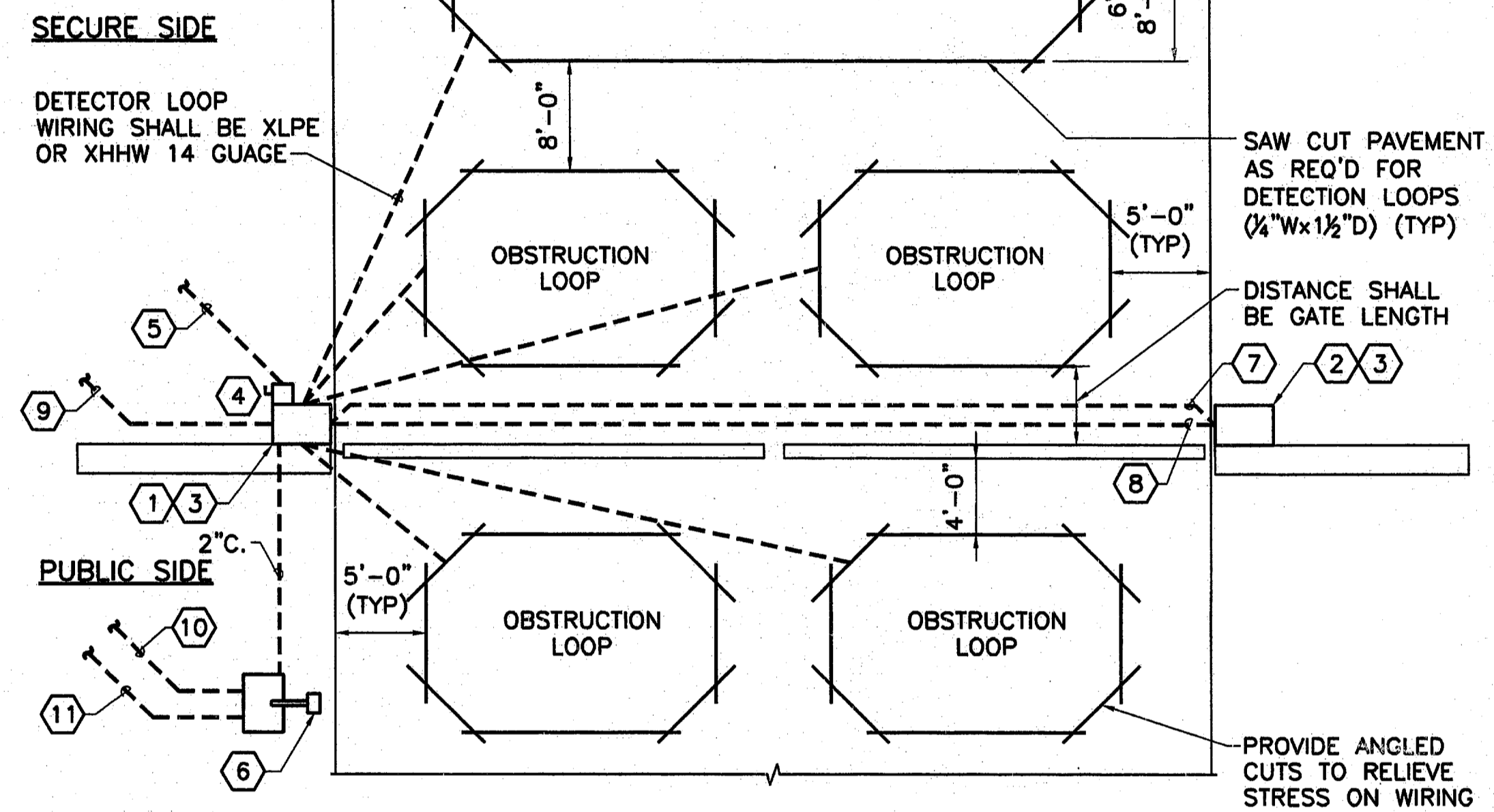
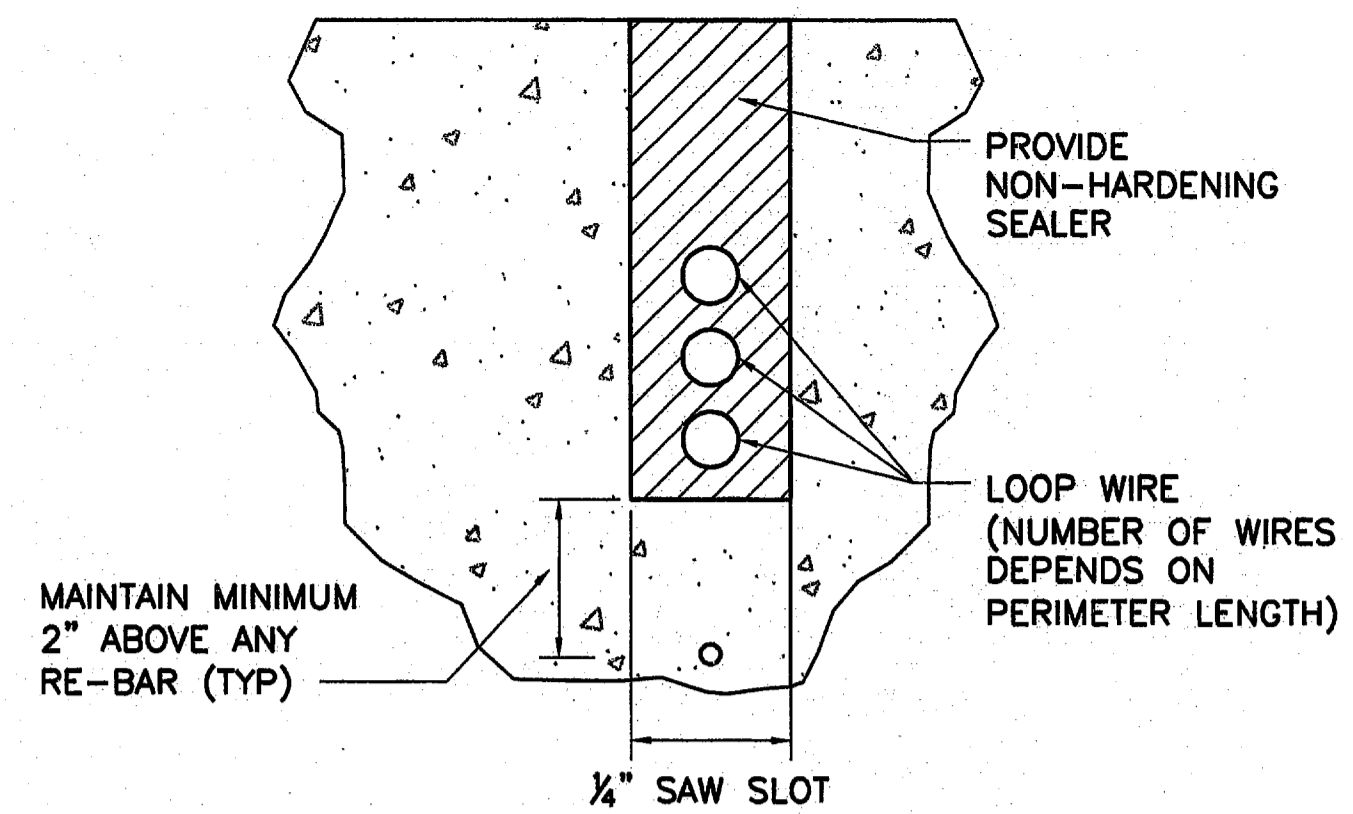
NO.2 GENERAL NOTES:
 1. MOUNTING HARDWARE AND BOLTS SHALL BE STAINLESS STEEL.

2 MOUNTING POST FACEPLATE DETAIL
 NOT TO SCALE



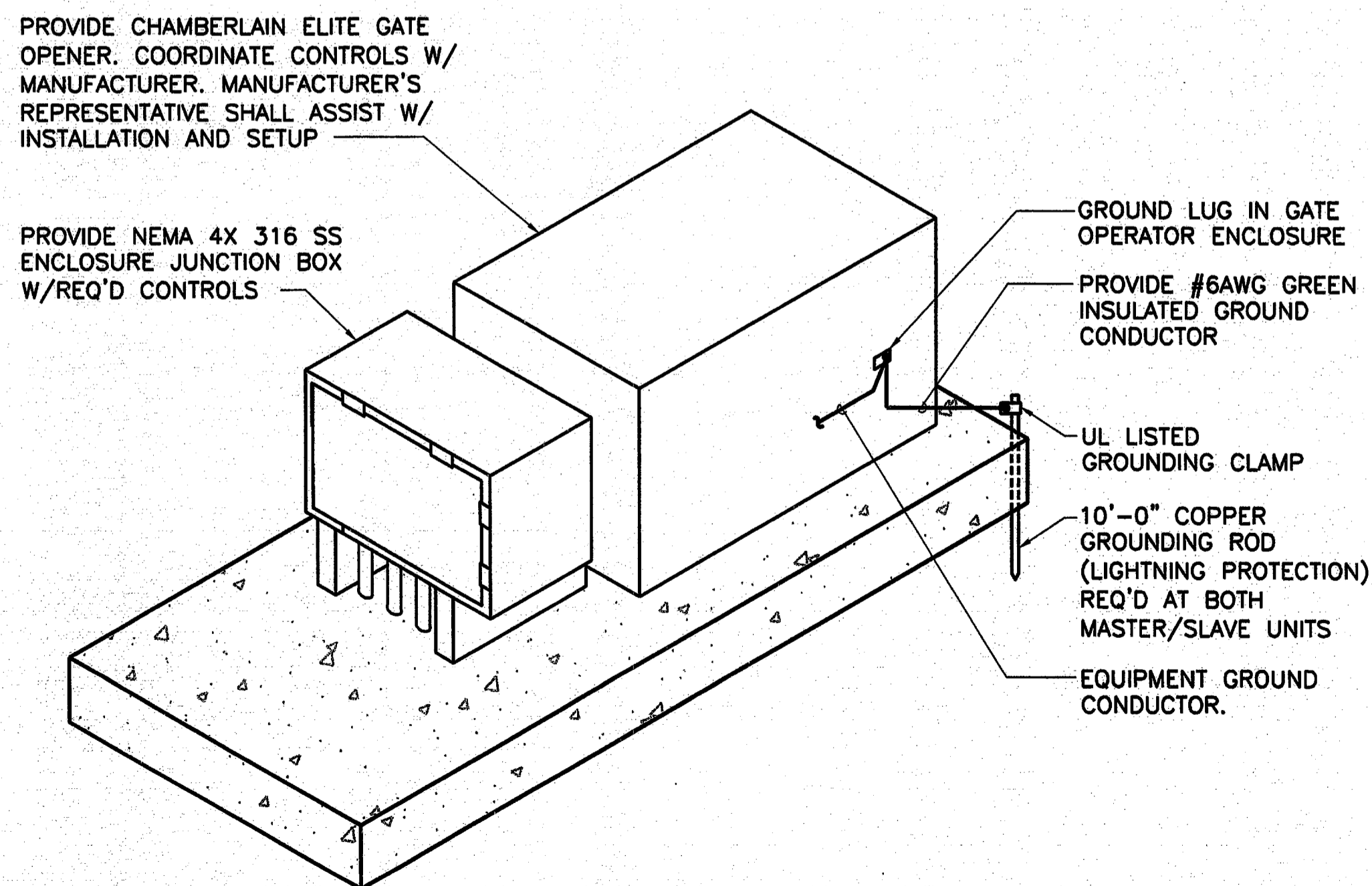
NO.3 GENERAL NOTES:
 1. MOUNTING HARDWARE AND BOLTS SHALL BE STAINLESS STEEL.

3 MOUNTING POST BASEPLATE DETAIL
 NOT TO SCALE



NO.5 GENERAL NOTES:
 1. DESIGN IS BASED ON A SWING GATE OPERATOR. THE SLAVE GATE OPERATOR OPERATES OFF ELECTRIC CONTROL EXTENDED FROM THE MASTER GATE OPERATOR AND THEREFORE THE POWER FEED (120V, 1Ø, 60HZ) IS REQUIRED ONLY AT THE MASTER GATE CONTROLLER.
 2. PROVIDE AND INSTALL CONTROL WIRING AND POWER AND CONTROL CONDUCTORS FROM MASTER GATE CONTROLLER TO SLAVE GATE OPERATOR IN ACCORDANCE WITH MANUFACTURER'S RECOMMENDATIONS.
 3. REFER TO CIVIL PLANS FOR SIZE/LOCATION OF GATE CONTROLLER, BOLLARDS, GATES, FENCES, ETC.
 4. THIS DETAIL IS SCHEMATIC IN NATURE AND IS INTENDED TO ILLUSTRATE MAJOR COMPONENTS AND WORK NECESSARY FOR SUCCESSFUL OPERATION OF THE GATE CONTROL SYSTEM. CONTRACTOR SHALL PROVIDE ALL LABOR AND MATERIALS REQUIRED FOR A COMPLETE AND OPERABLE SYSTEM.
 5. POLARITIES MUST BE THE SAME ON THE DETECTOR LOOPS OR THE ELECTRIC FIELDS WILL INTERFERE WITH EACH OTHER.

NO.5 NOTES BY SYMBOL "⬡"
 1. GATE OPERATOR (MASTER).
 2. GATE OPERATOR (SLAVE).
 3. PROVIDE CONCRETE BASE FOR GATE OPERATOR. LOCATE PER MANUFACTURER'S INSTALLATION INSTRUCTIONS.
 4. POWER FEED FOR GATE CONTROLLER. PROVIDE 30A/1P/NF DISCONNECT SWITCH IN NEMA 4X STAINLESS STEEL ENCLOSURE.
 5. TYPICAL POWER FEED FOR GATE CONTROLLER.
 6. PROVIDE ELECTRONIC GATE CONTROL CARD READER.
 7. PROVIDE MINIMUM 2" CONDUIT BETWEEN MASTER/SLAVE OPERATOR FOR POWER.
 8. PROVIDE 1" CONDUIT WITH CONTROL WIRING (3PR. #18 SHLD.) AND MAKE ALL TERMINATIONS. PROVIDE ADDITIONAL 1" SPARE CONDUIT BETWEEN OPERATORS.
 9. PROVIDE 1" CONDUIT FROM MASTER GATE OPERATOR TO SECURITY CONTROL PANEL.
 10. PROVIDE 1" CONDUIT FROM MOUNTING POST TO LOCATION IN SECURITY CONTROL PANEL AS IDENTIFIED BY OWNER. PROVIDE COMMUNICATION CABLING IN CONDUIT PER MANUFACTURER'S RECOMMENDATIONS. MAKE ALL TERMINATIONS AS REQUIRED.
 11. PROVIDE 120V POWER TO MOUNTING POST FOR CONTROL SYSTEM.



PROVIDE CHAMBERLAIN ELITE GATE OPENER. COORDINATE CONTROLS W/ MANUFACTURER. MANUFACTURER'S REPRESENTATIVE SHALL ASSIST W/ INSTALLATION AND SETUP

PROVIDE NEMA 4X 316 SS ENCLOSURE JUNCTION BOX W/REQ'D CONTROLS

4 SLIDE GATE OPERATOR
 NOT TO SCALE

5 GATE CONTROLLER DETAIL
 NOT TO SCALE

Freese and Nichols, Inc.
 Texas Registered Engineering Firm F-2144

FRESE & NICHOLS
 2220 San Jacinto Blvd, Suite 330
 Denton, Texas 76205-7589
 Phone - (940) 387-4600
 Fax - (940) 387-4677

TOWN OF ADDISON, TEXAS
 SURVEYOR 1.5 MG EST
 ELECTRICAL
 DETAILS

NO.	ISSUE	DATE	BY	FILE NAME
				EL-ADD-DT-MISC03.dwg

Bar is one inch on original drawing. If not one inch on this sheet, adjust scale.

VERIFY SCALE

SHEET **E-10**

SEQ.

N:\elec\EL-ADD-DT-MISC03.dwg LAYOUT: EL-ADD-DT-MISC03
 Jan 18, 2011 2:04pm LITS: 1 TWIST:
 REFERENCES: N:\elec\Bose\JWM-STAMP.dwg N:\Standard\34BORDER.DWG 95784.dwg