

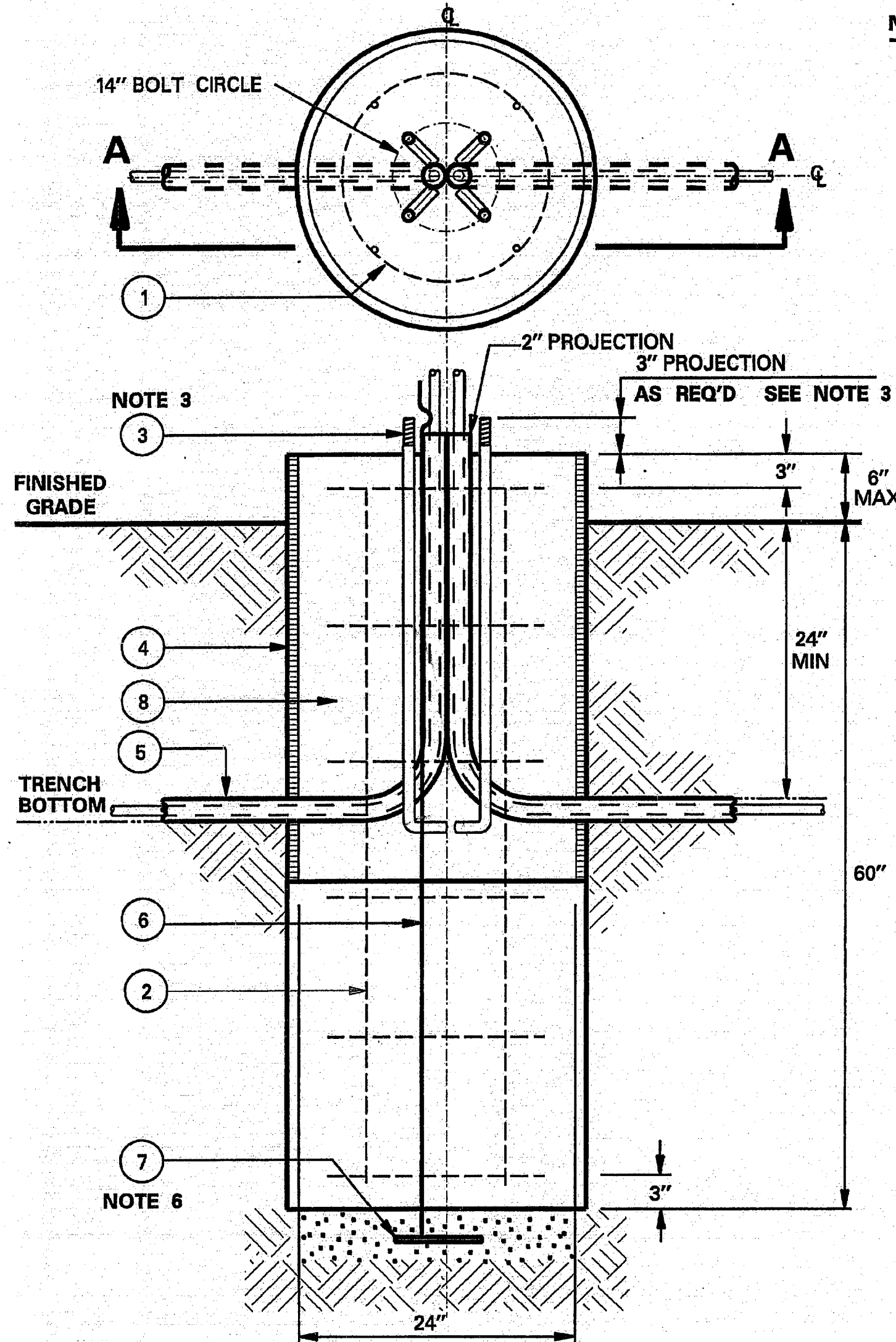
213 - 330

08 - 09

**STREET LIGHT FOUNDATION**  
**25', 30' & 40' SQUARE STEEL POLE**  
**40' M.H. ROUND STEEL POLE**

213 - 330

08 - 09



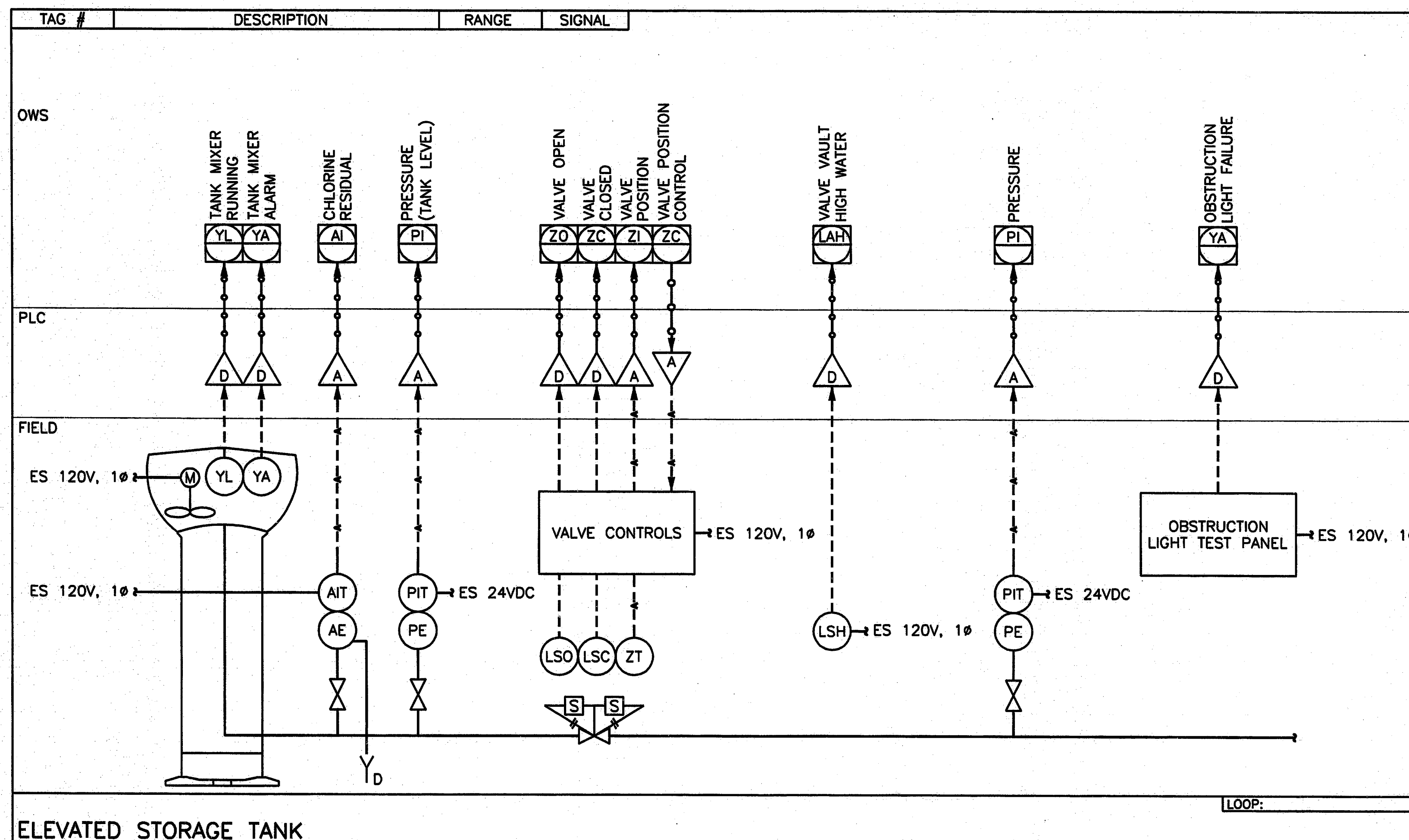
**NOTES:**

1. CONCRETE TO BE MINIMUM 3000 PSI AT 28 DAYS. (5 SACK) MAXIMUM AGGREGATE 3/4" TOP OF FOUNDATION TO BE TROWELED TO A FLAT AND LEVEL SURFACE. AVOID EXCESSIVE TROWELING. CONCRETE TO SET A MINIMUM OF 72 HOURS BEFORE POLE INSTALLATION.
2. REBAR HOOPS ARE TIED BEGINNING 3" BELOW TOP OF CONCRETE FORM AND ARE REPEATED AT APPROXIMATE 1' INTERVALS TO BOTTOM OF FOUNDATION.
3. 1" ANCHOR BOLTS TO BE USED WITH 25' & 30' POLE. 1 1/4" ANCHOR BOLTS TO BE USED WITH 40' POLE. USE TEMPLATE FURNISHED BY POLE MANUFACTURER FOR ALIGNING ANCHOR BOLTS. PROJECTION OF 3" ON 25' & 30' SQUARE AND 3 1/2" ON 40' SQUARE AND ROUND POLES.
4. CONCRETE FORM OF SONOTUBE TO EXTEND TO BOTTOM OF TRENCH OR AS NEEDED.
5. PROVIDE MINIMUM 24" GROUND WIRE PIGTAIL OUT OF CONCRETE FOR CONNECTION TO POLE.
6. A MINIMUM OF 12' OF BARE #6 SD CU WIRE TO BE PLACED IN BOTTOM OF HOLE AND COVERED WITH 2" OF DIRT
7. IF SOIL HAS BEEN DISTURBED, EXTEND FOUNDATION BY DEPTH OF DISTURBED SOIL.
8. FOR POLE FOUNDATIONS LARGER THAN 40' NOMINAL MOUNTING HEIGHT, CONTACT DISTRIBUTION STANDARDS.

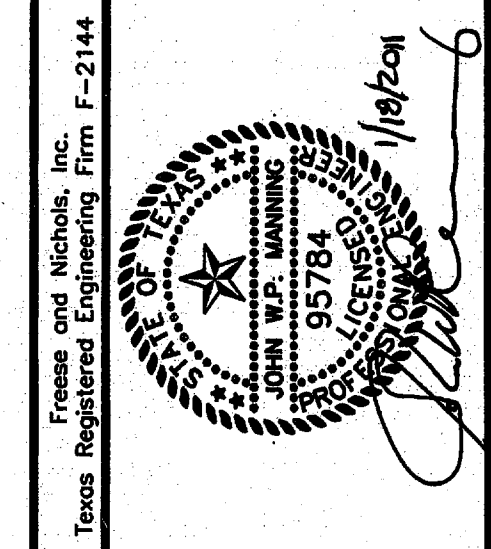
**SECTION "A - A"**

ITEM	QTY	DESCRIPTION	TSVREF	CU	MU
1	6	#3 REBAR, 18" DIAMETER HOOP, 3" OVERLAP	314470		
2	4	#6 REBAR, STRAIGHT, 60" LONG	317821		
3	4	ANCHOR BOLT, GALV. 1" FOR 25' & 30' POLES SEE NOTE 3	318585	SLF25/30	
3	4	ANCHOR BOLT, 1 1/4" GALV FOR 40' POLES SEE NOTE 3	318586	SLF40	
4	AS REQD	CONCRETE FOUNDATION TUBE, 24" DIAMETER	313841		
5	AS REQD	CONDUIT, PVC OR PEC (NOT IN FOUNDATION AUN)			
6	.5 LB	WIRE, #6 COPPER, SOLID	303244		
7	1	GROUND, POLE BUTT WIRE COIL			
8	AS REQD	CONCRETE			
1		FND, PRECAST 25' & 30' SQR. POLE, 14" BC, 1" BOLTS	398698	SLFPSQ25/30	
1		FND, PRECAST 40' SQR, 40' RND POLE, 14" BC, 1.25" BOLTS	398700	SLFP40	

APPROVED BY



**ELEVATED STORAGE TANK**



**FRESE & NICHOLS**  
 2220 San Jacinto Blvd., Suite 330  
 Denton, Texas 76205-7589  
 Phone - (940) 387-4600  
 Fax - (940) 387-4677

TOWN OF ADDISON, TEXAS  
**SURVEYOR 1.5 MG EST**  
 ELECTRICAL  
**DETAIL & LOOP DIAGRAM**

NO.	ISSUE	DATE	BY	FOR JOB NO.	ADD008459
		01/18/11			
				DESIGNED	JWM
				DRAWN	JAF
				CHECKED	JNH

Bar is one inch on original drawing. If not one inch on this sheet, adjust scale.

VERIFY SCALE

FILE NAME: EL-ADD-DT-MISC05.dwg

SHEET: **E-11**

SEQ.

ACAD: Rel 18.0s (LMS Tech)  
 [ADD008459] [D:\MISC05] N:\elec\EL-ADD-DT-MISC05.dwg LAYOUT: EL-ADD-DT-MISC05.dwg User: ppm  
 Jun 18, 2011 - 5:36pm LTS: 1 PLOTS: 1  
 REFERENCES: N:\elec\Bosse\JWM-STAMP.dwg N:\Standard\24BORDER.dwg 95784.dwg