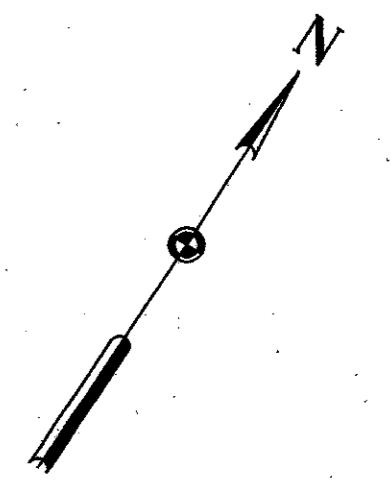
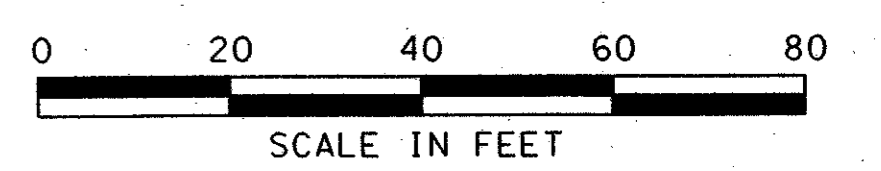
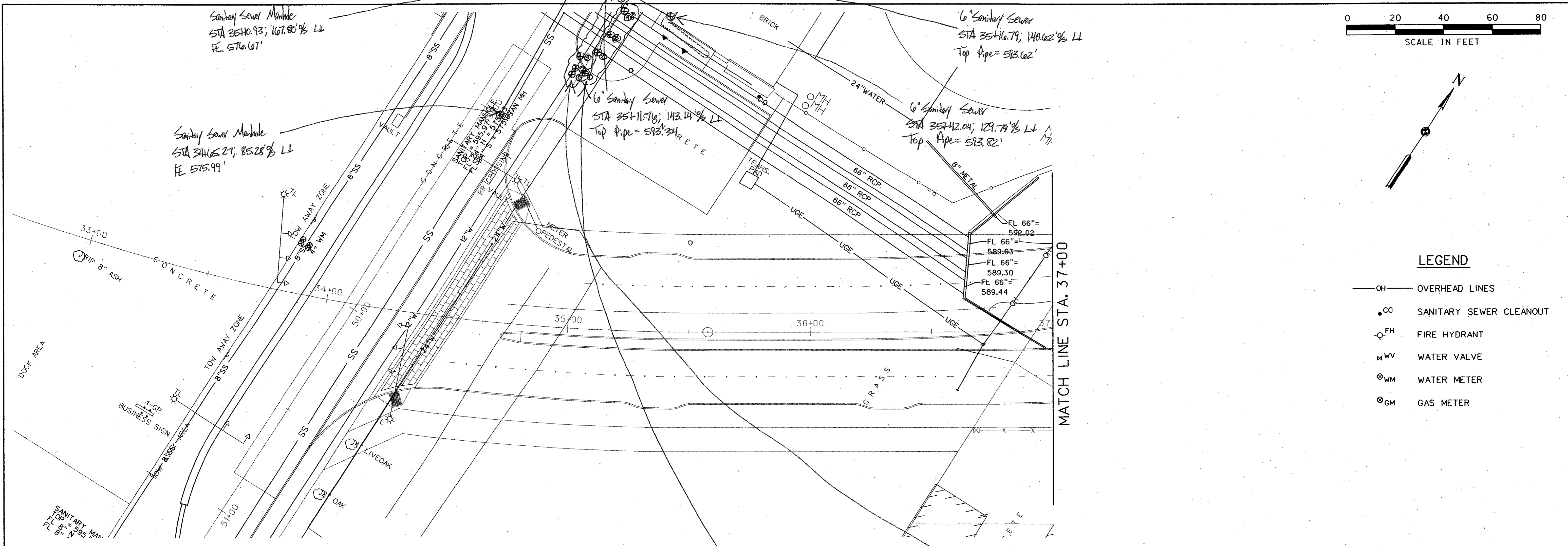


29-JUN-2004 13:02  
G:\25768-ph3\h1\cds\rf3ur01.dgn



**LEGEND**

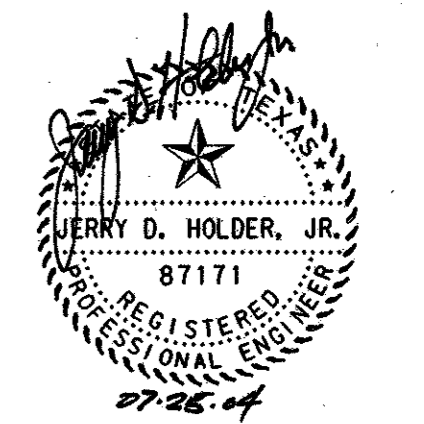
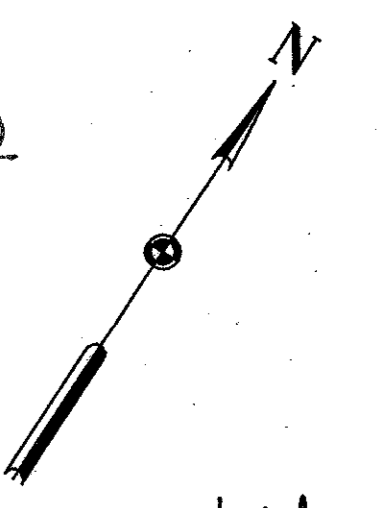
- OH — OVERHEAD LINES
- CO SANITARY SEWER CLEANOUT
- FH FIRE HYDRANT
- ⊕ WV WATER VALVE
- ⊗ WM WATER METER
- ⊗ GM GAS METER



12" Waterline Lowering			
Loc	Desc	STA	%
①	Valve Stem	34+95.08	104.30 LT
②	Upper 45° Bend	34+97.47	106.99 LT
③	Lower 45° Bend	35+00.42	112.02 LT
④	Lower 45° Bend	35+17.59	138.52 LT
⑤	Upper 45° Bend	35+21.77	144.43 LT
⑥	Valve Stem	35+21.05	147.70 LT

24" Waterline			
Loc	Desc	STA	%
①	Top Pipe	35+08.99	106.26 LT
②	↑	35+08.91	113.94 LT
③	↓	35+13.75	121.88 LT
④	Top Pipe	35+20.56	132.35 LT



**NOTE:**

UNDERGROUND UTILITIES EXIST WITHIN AND ADJACENT TO THE LIMITS OF CONSTRUCTION. AN ATTEMPT HAS BEEN MADE TO LOCATE THESE UTILITIES ON THE PLANS. ALL EXISTING UTILITIES MAY NOT BE SHOWN ON THE PLANS, AND THE LOCATION OF THE UTILITIES SHOWN MAY VARY FROM THE LOCATION ON THE PLANS. PRIOR TO THE BEGINNING OF ANY TYPE OF EXCAVATION, THE CONTRACTOR SHALL CONTACT THE UTILITIES INVOLVED AND MAKE ARRANGEMENTS FOR THE LOCATION OF THE UTILITY ON THE GROUND. THE CONTRACTOR SHALL MAINTAIN THE UTILITY LOCATION MARKINGS UNTIL THEY ARE NO LONGER NECESSARY.

587.01	REVISION	APPROV.	182
<b>HNTB</b> ARCHITECTS ENGINEERS PLANNERS The HNTB Companies			
<b>ARAPAHO ROAD - PHASE III</b>			
SURVEYOR BOULEVARD TO ADDISON ROAD			
EXISTING UTILITY PLAN			
STA 33+87.02 TO 40+00			
TOWN OF ADDISON, TEXAS			
Design JSN	Drawn GFS	DATE	SCALE
Check JDH	Check JSN	APRIL 04	1" = 20'
PROJECT NO.		SHEET NO.	
25768		U-1	