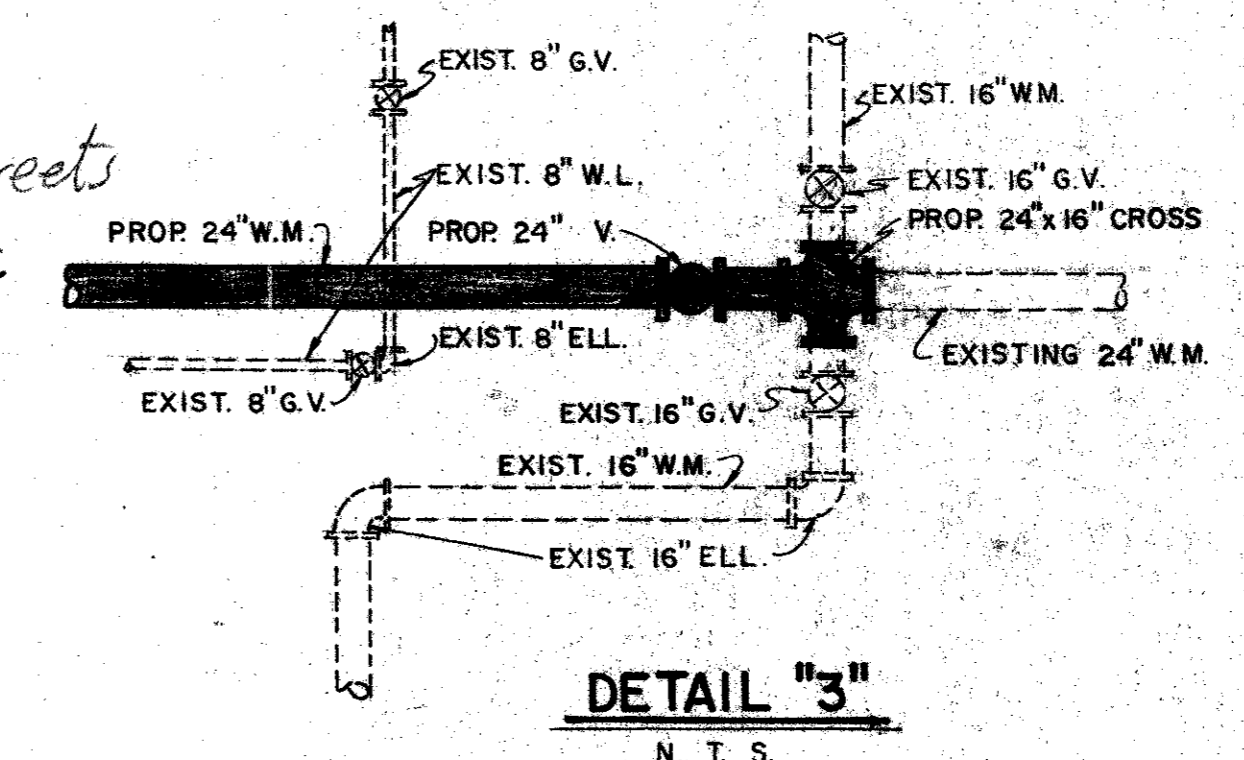
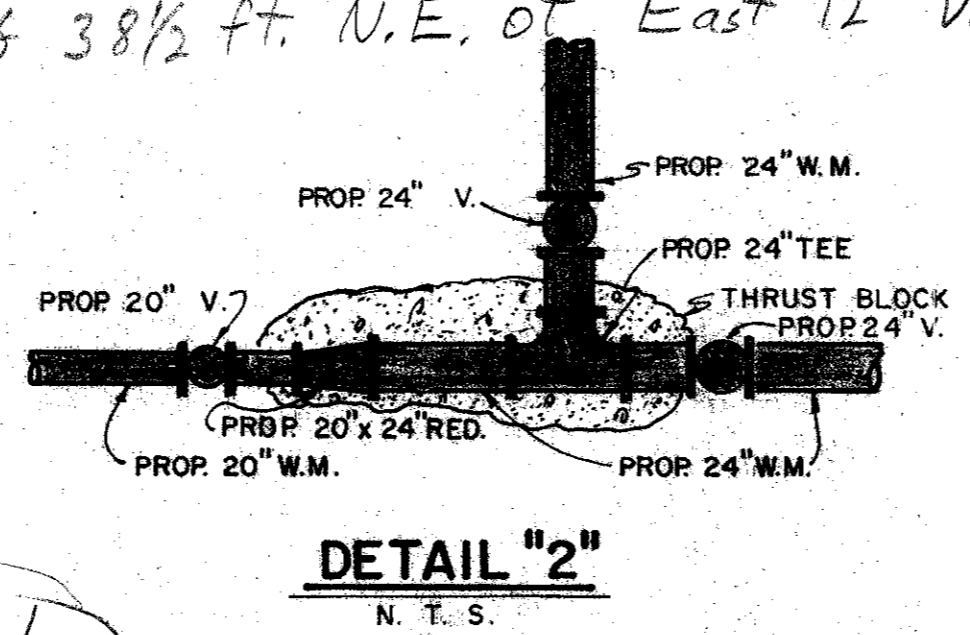
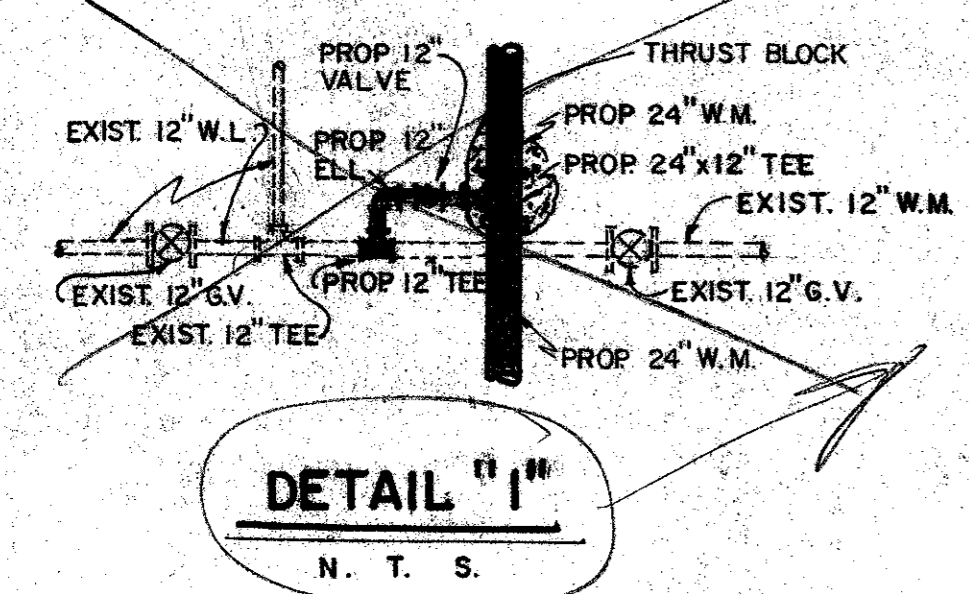
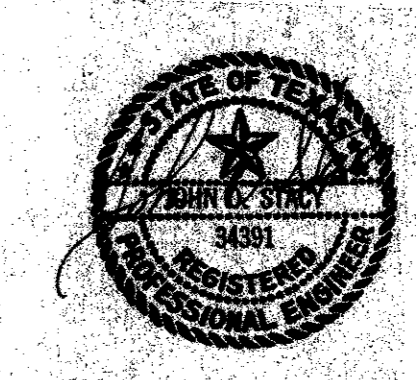


24" Valve is:
 19 ft. East of Cut in Curb Joining old & New Streets
 & 38 1/2 ft. N.E. of East 12" Valve or 3 together.



Scale: 1" = 100'

LEGEND	
⊠	Hub & Tack
○	CORP Monument
⊙	Power Pole
◉	Water Meter
◊	Water Valve
⊙	Water Hydrant
⊙	Gas Meter
⊙	Gas Meter
⊙	Telephone Box
⊙	Guy Wire
⊙	Iron Pin
⊙	Mail Box
⊙	Water Line
⊙	Gas Line
⊙	Underground Telephone



CITY OF ADDISON
 DALLAS COUNTY, TEXAS
 WATER IMPROVEMENTS
 LINE "B" - STA. 63+40 TO STA. 87+80
 LINE "C" - STA. 63+00 TO STA. 63+40
 LINE "AA" - STA. 0+00 TO STA. 7+70

GINN & STACY, INC.
 CONSULTING ENGINEERS - DALLAS, TEXAS
 Designed By: J.D.S. Scale: As Shown
 Drawn By: G.L.H. Date: 1977 Sheet 6 of 24