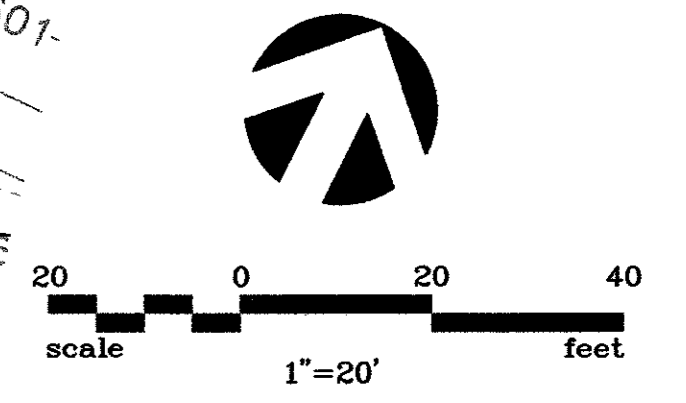


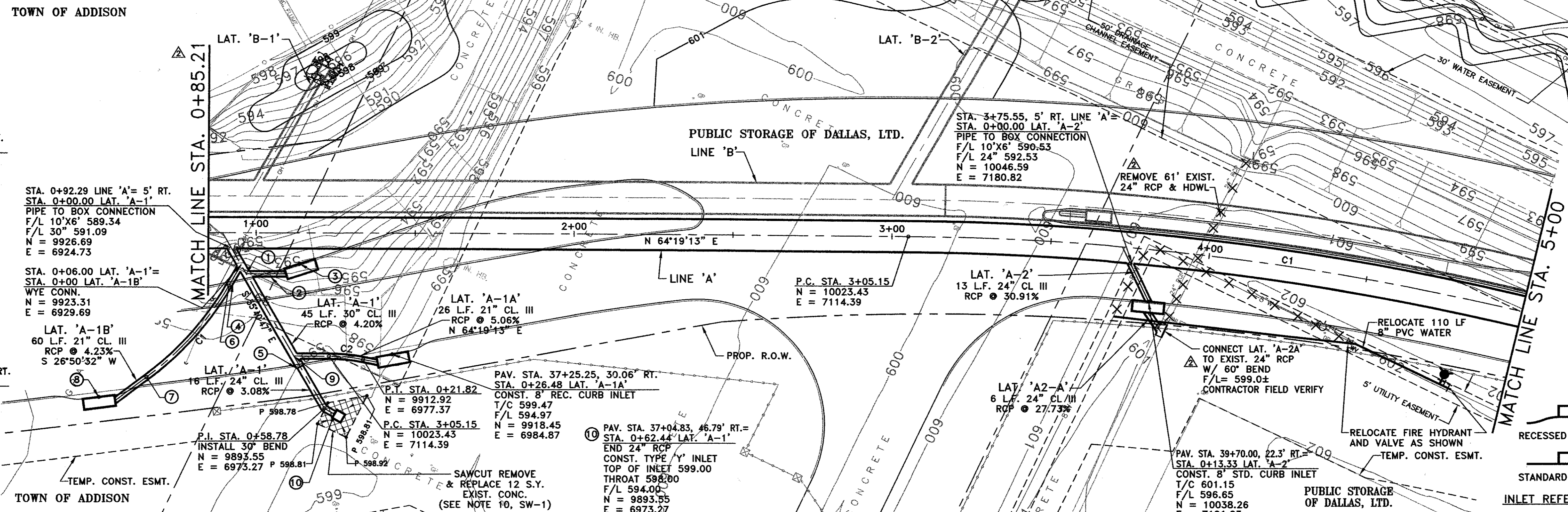
LINE 'A' CURVE DATA					
NUMBER	RADIUS	DELTA	ARC LENGTH	CHORD BEARING	CHORD LENGTH
C1	844.17	25°41'58"	378.64	N 77°10'12" E	375.48

LAT. 'A-1A' CURVE DATA					
NUMBER	RADIUS	DELTA	ARC LENGTH	CHORD BEARING	CHORD LENGTH
C2	55.00	11°15'00"	10.80	N 69°56'43" E	10.78

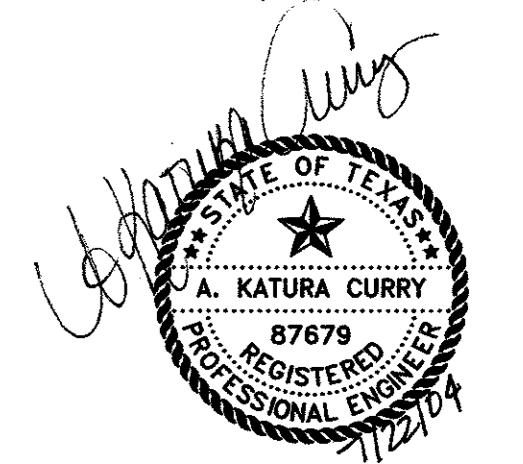
NO.	DATE	REVISION	APPROV.
1	06/28/04	REVISED PER ADDENDA	A.K.C.
2	06/28/04	REVISED PER G & A	A.K.C.
3			



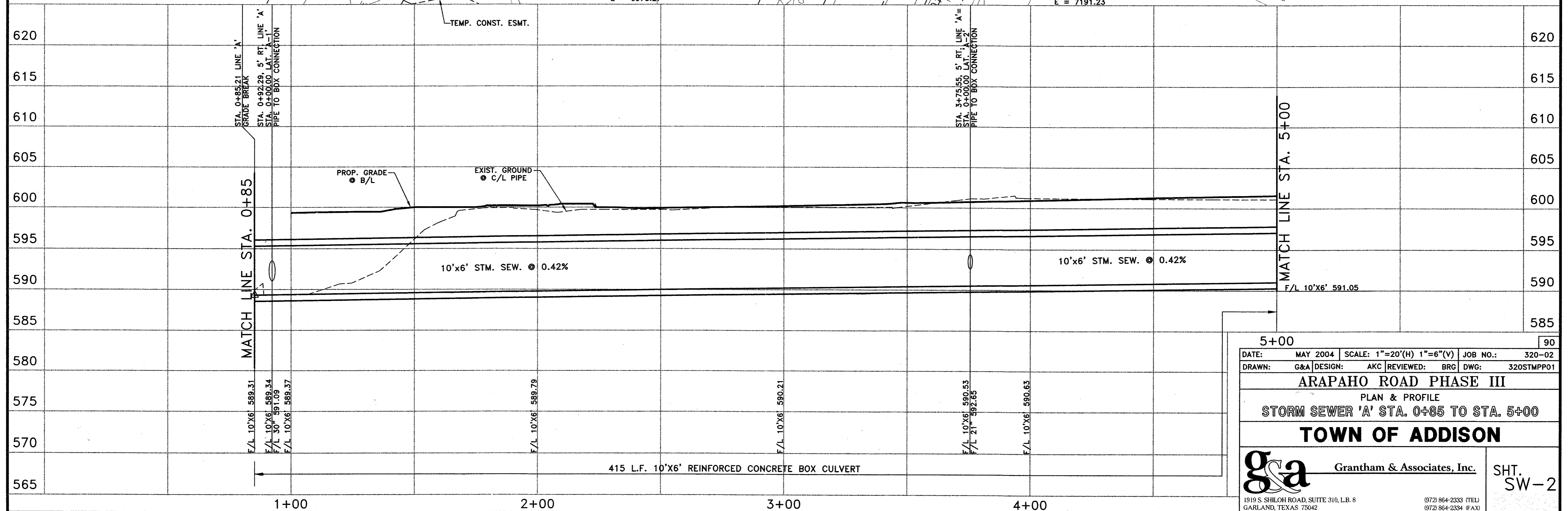
- ① STA. 0+09.29 LAT. 'A-1' = STA. 0+00.00 LAT. 'A1-C' WYE CONN. N = 9921.45 E = 6932.40
- ② LAT. 'A-1C' 13 L.F. 21" CL. III RCP @ 27.03% N 64°19'13" E
- ③ PAV. STA. 37+00.00, 2.16' LT. STA. 0+12.54 LAT. 'A1-C' CONST. 10' STD. CURB INLET T/C 599.5 F/L 595.0 N = 9926.89 E = 6943.70
- ④ S 04°19'13" W
- ⑤ STA. 0+43.45 LAT. 'A-1' END 30" RCP BEGIN 24" RCP
- ⑥ P.C. STA. 0+07.57 N = 9915.76 E = 6929.11
- ⑦ P.T. STA. 0+46.88 N = 9878.14 E = 6918.62
- ⑧ PAV. STA. 36+32.00, 32.03' RT. STA. 0+59.28 LAT. 'A1-B' CONST. 10' REC. CURB INLET T/C 598.7 F/L 594.2 N = 9867.07 E = 6913.02
- ⑨ STA. 0+39.45 LAT. 'A-1' = STA. 0+00.00 LAT. 'A-1A' WYE CONN. N = 9904.45 E = 6957.31



NOTE REFER TO SW-1 FOR STORM SEWER NOTES



THE SEAL APPEARING ON THIS DOCUMENT WAS AUTHORIZED BY: A. KATURA CURRY ON 7-21-04 ALTERATION OF A SEALED DOCUMENT WITHOUT PROPER NOTIFICATION TO THE RESPONSIBLE ENGINEER IS AN OFFENSE UNDER THE TEXAS ENGINEERING PRACTICE ACT.



DATE:	MAY 2004	SCALE:	1"=20'(H) 1"=6'(V)	JOB NO.:	320-02
DRAWN:	G&A	DESIGN:	AKC	REVIEWED:	BRG
DRAWN:		DESIGN:		REVIEWED:	BRG
DRAWN:		DESIGN:		REVIEWED:	BRG
<b>ARAPAHO ROAD PHASE III</b>					
PLAN & PROFILE					
STORM SEWER 'A' STA. 0+85 TO STA. 5+00					
<b>TOWN OF ADDISON</b>					
<b>g&amp;a</b>			Grantham & Associates, Inc.		SHT. SW-2
1919 S. SHILOH ROAD, SUITE 310, L.B. 8 GARLAND, TEXAS 75042			(972) 864-2333 (TEL) (972) 864-2334 (FAX)		