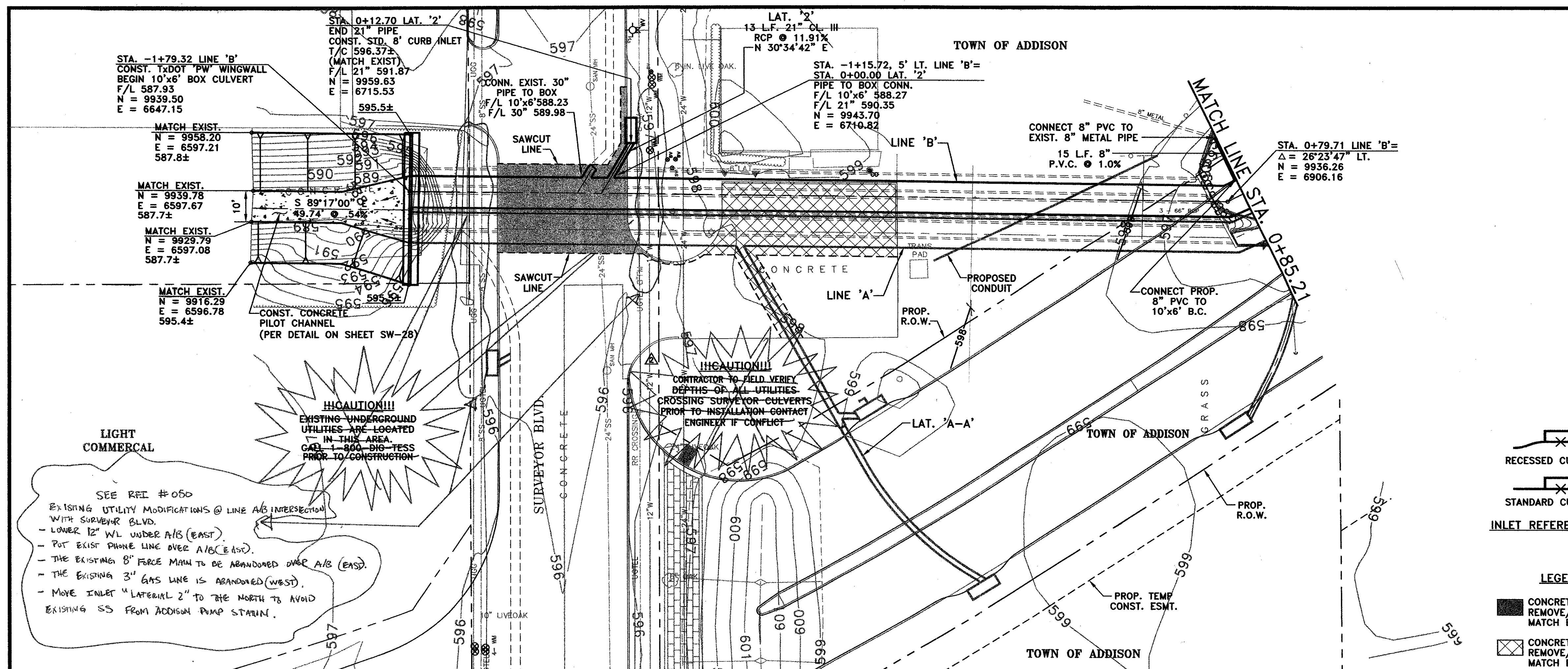
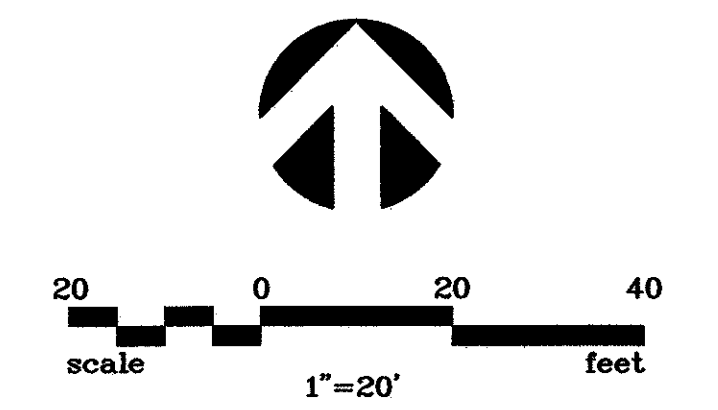


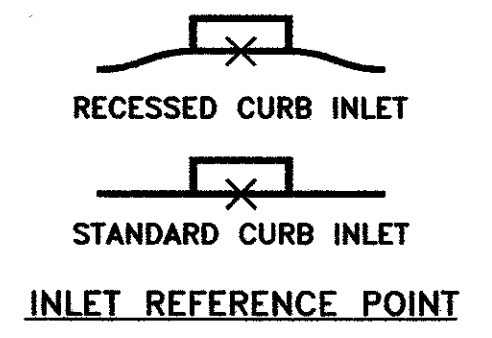
NO.	DATE	REVISION	APPROV.
1			
2	06/28/04	REVISED PER G & A	A.K.C.
3			



**!!!CAUTION!!!**  
EXISTING UNDERGROUND UTILITIES ARE LOCATED IN THIS AREA. CALL 1-800-DIG-TESS PRIOR TO CONSTRUCTION.

**!!!CAUTION!!!**  
CONTRACTOR TO FIELD VERIFY DEPTHS OF ALL UTILITIES CROSSING SURVEYOR CULVERTS PRIOR TO INSTALLATION CONTACT ENGINEER IF CONFLICT.

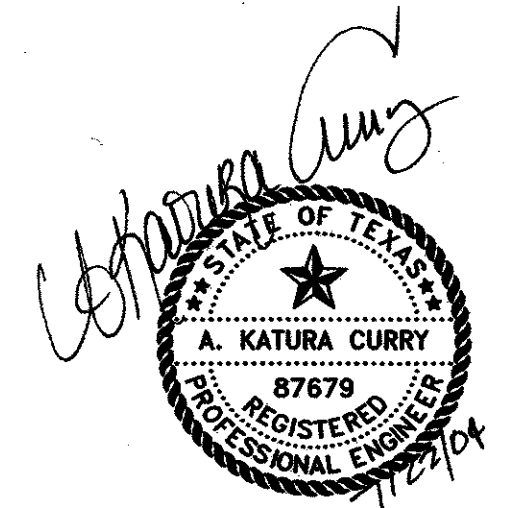
SEE REF # 060  
EXISTING UTILITY MODIFICATIONS @ LINE A/B INTERSECTION WITH SURVEYOR BLVD.  
- LOWER 12" WL UNDER A/B (EAST).  
- PUT EXIST PHONE LINE OVER A/B (EAST).  
- THE EXISTING 8" FORCE MAIN IS TO BE ABANDONED OVER A/B (EAST).  
- THE EXISTING 3" GAS LINE IS ABANDONED (WEST).  
- MOVE INLET "LATERAL 2" TO THE NORTH TO AVOID EXISTING SS FROM ADDISON PUMP STATION.



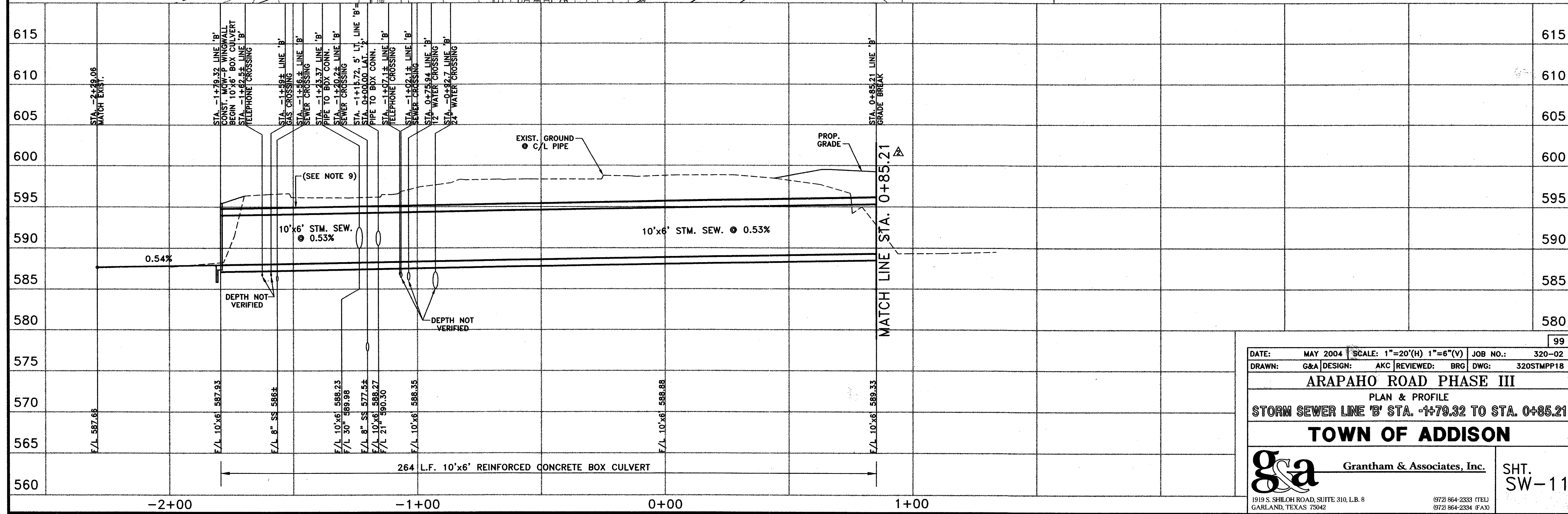
**LEGEND**

- CONCRETE PAVEMENT REMOVE/REPLACE MATCH EXIST.
- CONCRETE DRIVE REMOVE/REPLACE MATCH EXIST.

**NOTE**  
REFER TO SW-1 FOR STORM SEWER NOTES



THE SEAL APPEARING ON THIS DOCUMENT WAS AUTHORIZED BY: A. KATURA CURRY ON 7-21-04. ALTERATION OF A SEALED DOCUMENT WITHOUT PROPER NOTIFICATION TO THE RESPONSIBLE ENGINEER IS AN OFFENSE UNDER THE TEXAS ENGINEERING PRACTICE ACT.



DATE: MAY 2004	SCALE: 1"=20'(H) 1"=6"(V)	JOB NO.: 320-02	99
DRAWN: G&A	DESIGN: AKC	REVIEWED: BRG	DWG: 320STMP18
<b>ARAPAHO ROAD PHASE III</b>			
PLAN & PROFILE			
STORM SEWER LINE 'B' STA. -1+79.32 TO STA. 0+85.21			
<b>TOWN OF ADDISON</b>			
Grantham & Associates, Inc.		SHT. SW-11	
1915 S. SHILOH ROAD, SUITE 310, L.B. 8 GARLAND, TEXAS 75042		(972) 864-2333 (TEL) (972) 864-2334 (FAX)	