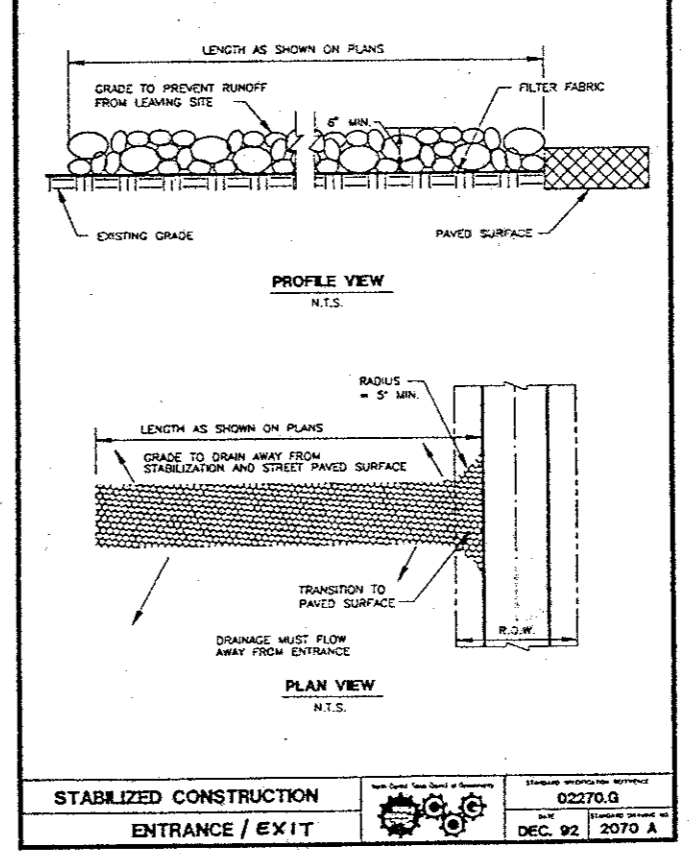
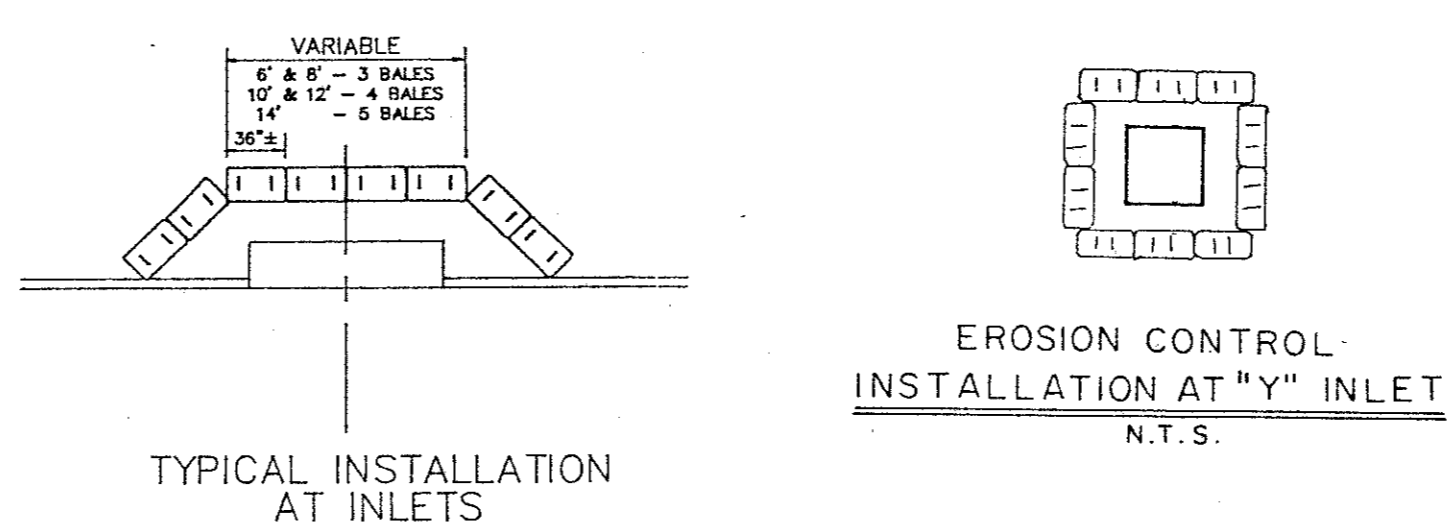
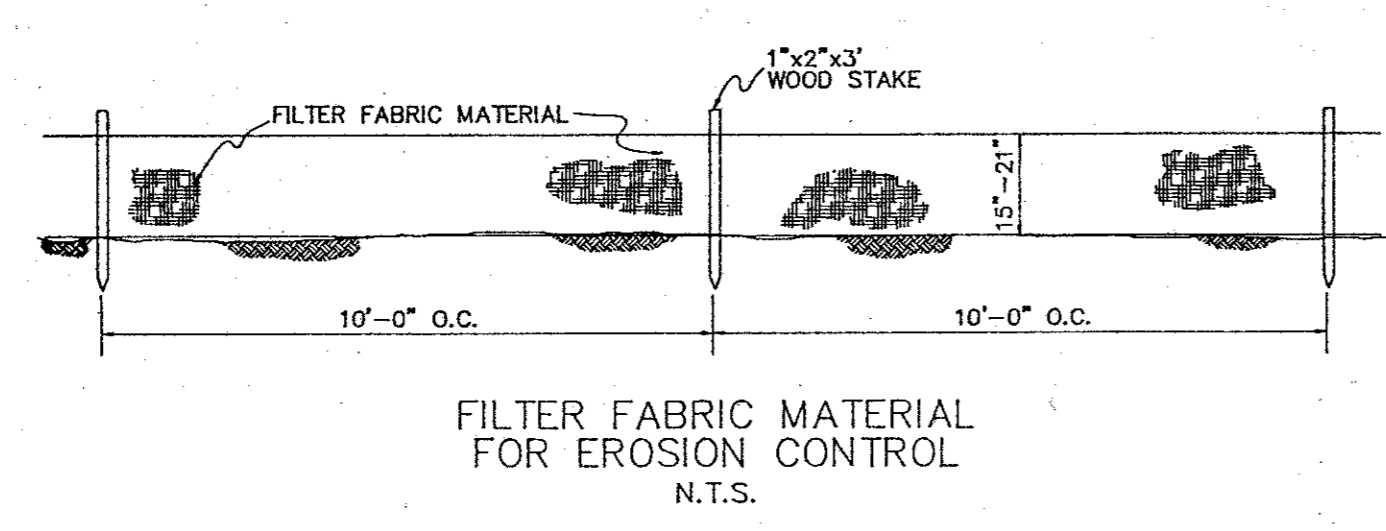


- GENERAL NOTES:**
- All materials and workmanship shall conform to Town of Addison standards and specifications.
 - It will be the responsibility of the contractor to protect all public utilities in the construction of this project. All manholes, cleanouts, valve boxes, etc. must be adjusted to proper line and grade by the contractor prior to and after the placing of permanent paving. Utilities must be maintained to proper line and grade during the construction of the paving for this development.
 - All fill shall be compacted to 95% Proctor density in a maximum of six inch (6") lifts.

- EROSION CONTROL:**
- The Grading Contractor shall provide and maintain erosion control devices in the area indicated on this plan or any other areas as directed by the Owner's representative.
 - The Paving Contractor shall maintain all erosion control devices as indicated on this plan and as directed by the Owner's representative.
 - Site and exit locations shall be maintained in a condition which will prevent tracking or flowing of sediment onto public roadways or the private access drive. (See detail and general notes for Stabilized Construction Entrance.) All sediment spilled, dropped, washed or tracked onto such roadway must be removed immediately. When washing is required to remove sediment prior to entrance to a public roadway or private access drive, it shall be done on an area stabilized with crushed stone which drains into an approved sediment basin. All fines imposed for tracking onto public roads shall be paid by Contractor.
 - The Contractor is responsible for re-establishing any erosion control device which he disturbs. Each Contractor shall notify the Owner's representative of any deficiencies in the established erosion control measures which may lead to unauthorized discharge of storm water pollution, sedimentation, or other surface water or ground water pollutants, and excessive dust and other airborne pollutants. Unauthorized pollutants include, but are not limited to, excess concrete dumping residue, paints and overspray, solvents, greases, fuel and lube oil, pesticides, and solid waste materials.
 - INSPECTION:** The Contractor or Owner's representative shall conduct inspections of all erosion controls provided in the SWPPP at a minimum of once every seven calendar days and within 24 hours of the end of a rain that is 0.5 inches or greater. When field inspection reveals an inadequacy in erosion control measures, the SWPPP shall be revised and erosion control measures shall be upgraded within seven calendar days. A copy of the revised SWPPP shall be submitted to the City to be filed with the construction plans.
 - MAINTENANCE:** Erosion controls shall be repaired or replaced as inspection deems necessary or as directed by the Owner's representative. Accumulated silt at any erosion control device shall be removed when it reaches a depth of half of the erosion control device, and shall be distributed on site in a manner not contributing to additional siltation.

- GRADING:**
- Upon completion of soil disturbing site construction, all areas not paved or covered by permanent structures or equivalent permanent stabilization measures shall be stabilized with a uniform perennial vegetative cover. This work, seeding with common bermuda grass, shall be done by Trinity Christian Academy forces. For termination of industrial status of the construction site, the vegetative cover must meet a minimum density of 70%, as determined by the Owner's representative. All temporary erosion and sediment control measures must be removed.

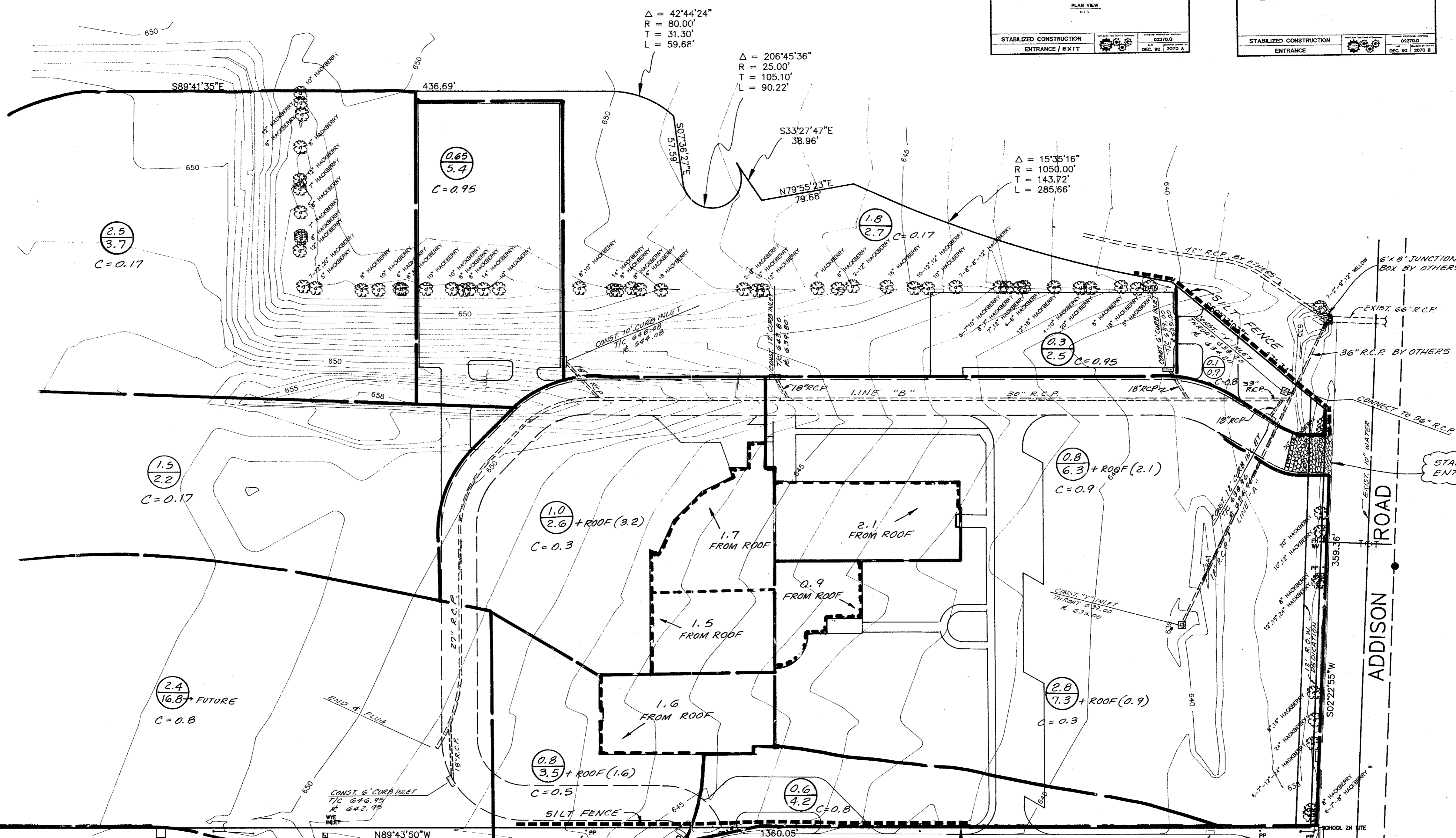
- STORM WATER DISCHARGE AUTHORIZATION:**
- A Notice of Intent (NOI), as defined by the Federal Register (Volume 57, No. 175), shall be submitted to the EPA no less than 24 hours prior to commencement of construction activities.
 - All contractors and subcontractors providing services related to the SWPPP shall sign a Contractor Certification statement acknowledging their responsibilities as specified in the SWPPP.
 - A copy of the SWPPP, including copies of the NOI, Contractor Certifications, and any Revisions, shall be submitted to the City and filed with the construction plans, and shall be retained on-site during construction.
 - A Notice of Termination (NOT) shall be submitted to EPA and the City when the site has 100% of the disturbed areas stabilized and the site no longer has storm water discharges associated with industrial activities (construction), or the NOI permittee or co-permittee no longer holds operational control of the construction.



STABILIZED CONSTRUCTION ENTRANCE

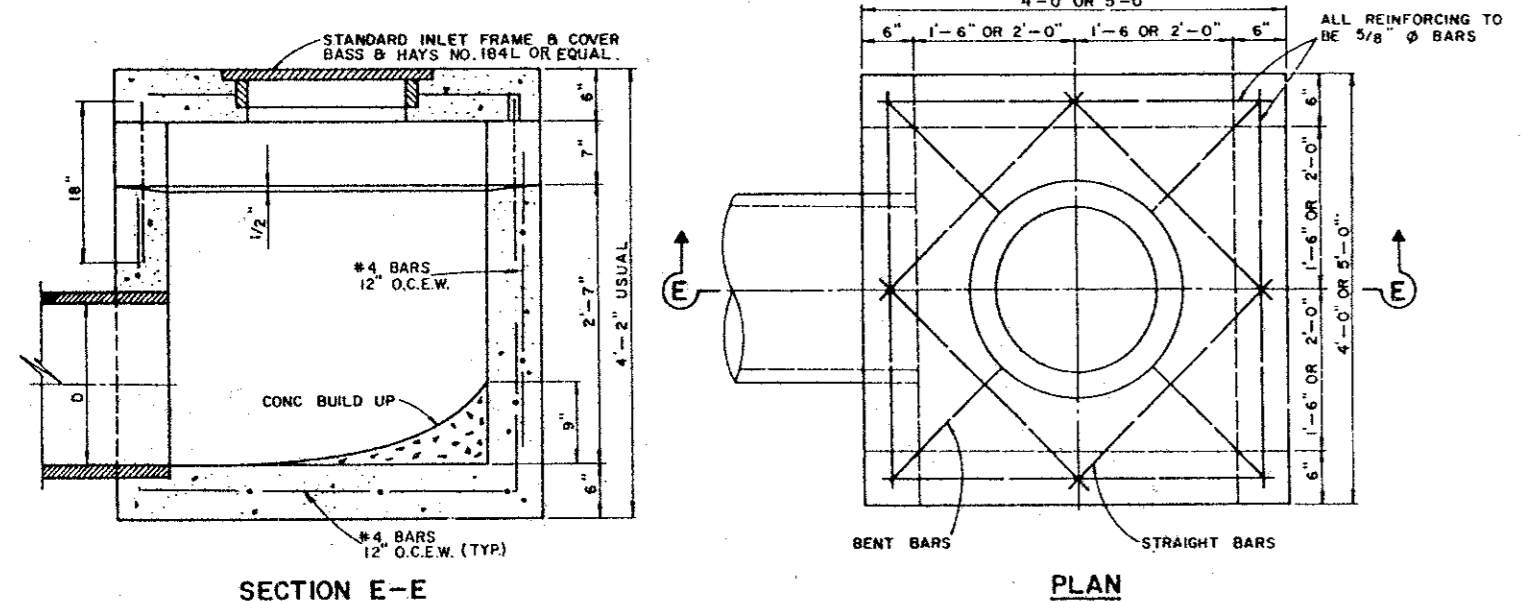
GENERAL NOTES:

- STONE SHALL BE 3 TO 5 INCH DIAMETER CRUSHED ROCK OR ACCEPTABLE CRUSHED PORTLAND CEMENT CONCRETE.
- LENGTH SHALL BE SHOWN ON PLANS, WITH A MINIMUM LENGTH OF 30 FEET FOR LOTS WHICH ARE LESS THAN 150 FEET FROM EDGE OF PAVEMENT. THE MINIMUM DEPTH IN ALL OTHER CASES SHALL BE 30 FEET.
- THE THICKNESS SHALL NOT BE LESS THAN 6 INCHES.
- THE WIDTH SHALL BE NO LESS THAN THE FULL WIDTH OF ALL PORTS OF INGRESS OR EGRESS.
- WHEN NECESSARY, VEHICLES SHALL BE CLEANED TO REMOVE SEDIMENT PRIOR TO ENTRANCE ONTO A PUBLIC ROADWAY. WHEN WASHING IS REQUIRED, IT SHALL BE DONE ON AN AREA STABILIZED WITH CRUSHED STONE WITH DRAINAGE FLOWING AWAY FROM BOTH THE STREET AND THE STABILIZED ENTRANCE. ALL SEDIMENT SHALL BE PREVENTED FROM ENTERING ANY STORM DRAIN, DITCH OR WATERCOURSE USING APPROVED METHODS.
- THE ENTRANCE SHALL BE MAINTAINED IN A CONDITION WHICH WILL PREVENT TRACKING OR FLOWING OF SEDIMENT ONTO PAVED SURFACES. THIS MAY REQUIRE PERIODIC DRESSING WITH ADDITIONAL STONE AS DEMANDS OCCUR. ALL SEDIMENT SPILLED, DROPPED, WASHED OR TRACKED ONTO PAVED SURFACES MUST BE REMOVED IMMEDIATELY.
- THE ENTRANCE MUST BE PROPERLY GRADED OR RECONSTRUCTED TO PREVENT RUNOFF FROM LEAVING THE CONSTRUCTION SITE.



$\Delta = 90^{\circ}00'00''$
 $R = 170.00'$
 $T = 170.00'$
 $L = 267.04'$

- NOTES:**
- ALL LAPS AND EXTENSIONS OF REINFORCING BARS SHALL BE 30 BAR DIAMETERS UNLESS NOTED OTHERWISE.
 - TACK WELD GRATES IN PLACE OR USE GRISS COSS.
 - PIPE MAY BE PLACED IN ANY WALL, BUT SHALL NOT ENTER ANY CORNER, OR BOTTOM.
 - CONCRETE TO BE MIN. OF 4200 PSI.



BENCH MARK:

- ON TOP CURB WEST SIDE OF ADDISON ROAD AT NORTHEAST CORNER OF SARATOGA SPRINGS ADD. ELEV. 640.21
- CUT ON WEST TOP CURB ADDISON ROAD 20'± NORTH OF NORTHEAST PROPERTY CORNER. ELEV. 638.40

CAUTION EXCAVATING NEAR POWER POLE

LEGEND

$\frac{2}{10}$ = AREA IN ACRES
 9,100 C.F.S.

DRAINAGE DATA
 $T_c = 10 \text{ min}$
 $I_{100} = 8.74 \text{ in/hr}$

NO.	DATE	BY	REVISION

EROSION CONTROL AND DRAINAGE PLAN
TRINITY CHRISTIAN ACADEMY
 CITY OF ADDISON
 DALLAS COUNTY, TEXAS

DOWDEY, ANDERSON & ASSOCIATES, INC.
 16250 DALLAS PKWY. (214) 931-0694 DALLAS, TEXAS

DESIGN	DRAWN	CHECKED	DATE	SCALE	JOB	SHEET
D.M.D.	R.E.	D.M.D.	11-94	1"=50'	94-078	1/2