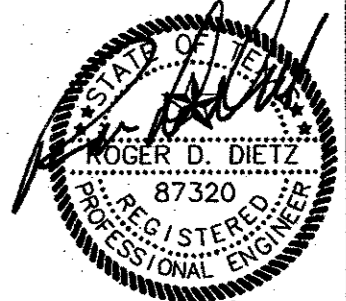


AS BUILTS
 BOAR CREEK CONSTR.
 5/27/2002

dietz engineering

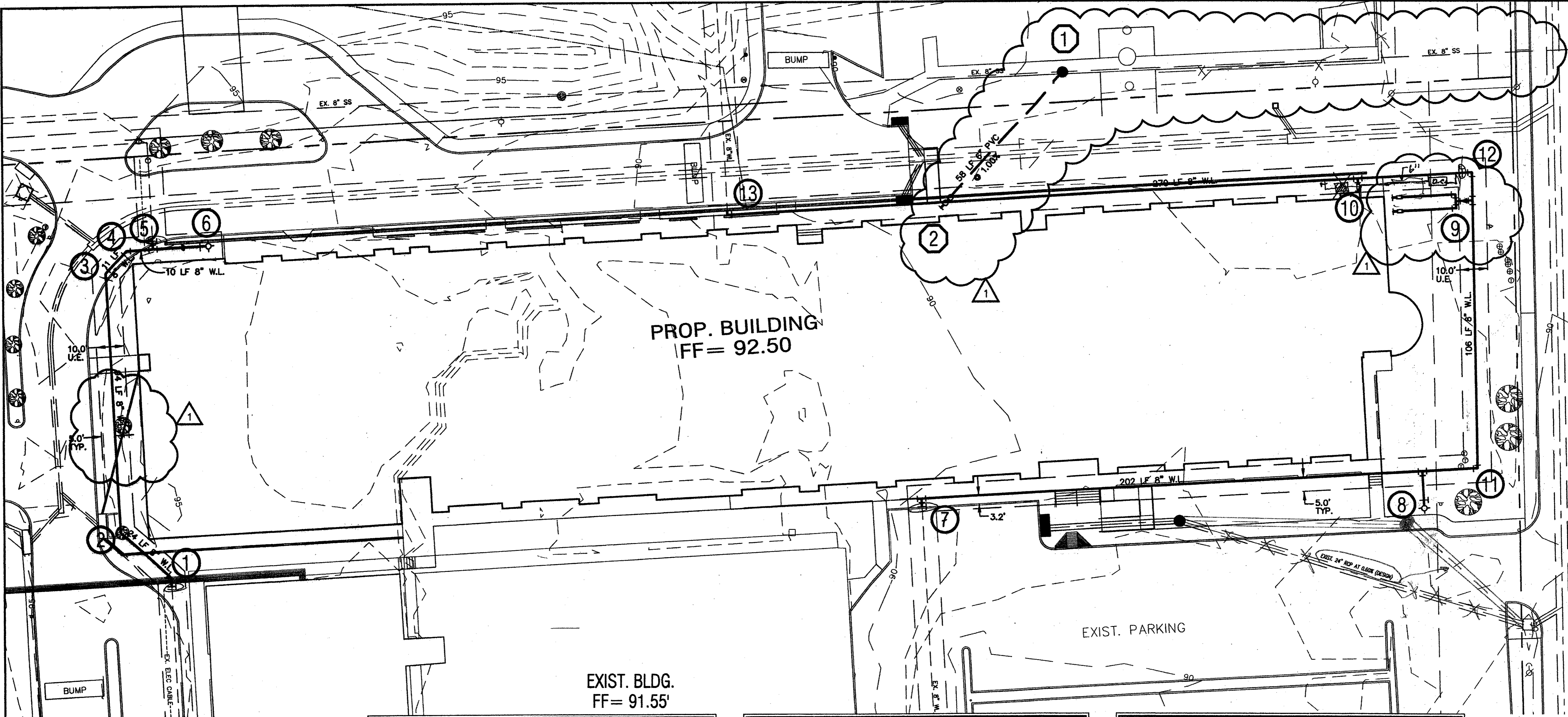


Signing Date: 03/12/01
dietz engineering
 811 e. plano parkway
 suite 109
 plano, texas 75074
 voice: 972 633-8867
 fax: 972 633-1327

Drawn By: LL
 Checked By: RDD
 Revisions:

No.	Date	Description
1	03/12/01	WATER/SEWER

TRINITY CHRISTIAN ACADEMY
 WATER / SANITARY SEWER
 PLAN VIEW
 for the
 City of Addison, Texas



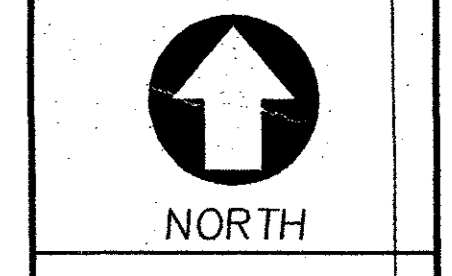
WARNING !!!
 FIELD VERIFY EXISTING UNDERGROUND
 UTILITY LOCATIONS PRIOR TO
 CONSTRUCTION OR EXCAVATION.

LEGEND			
+ETP600.0	EX. TOP OF PVMT.	⊗	WATER VALVE
+ETG600.0	EX. TOP OF GRND.	⊠	UTILITY BOX
+ETC600.0	EX. TOP OF CURB	⊙	WOOD BOLLARD
+600.0	FIN. FLR. SPOT ELEV.	⊙	GAS METER
TP600.0	TOP OF PAVEMENT	⊠	CURB INLET
TC600.0	TOP OF CONCRETE	⊠	GRATE INLET
TG600.0	TOP OF GROUND	⊙	FIRE HYDRANT
600.0	TOP OF CURB	⊙	WATER METER
---	PROP. GRADE LINE	⊙	STORM/SS MANHOLE
-650-	EX. GRADE LINE	⊙	TREE
FF	FINISHED FLOOR	⊙	LIGHT POLE
↑	GUY WIRE ANCHOR	⊙	SIGNAL POLE
⊙	POWER POLE	⊙	SIGNAL PULL BOX
P	STREET/CABLE SIGN		

SANITARY SEWER NOTATION	
①	INSTALL: STD. 4.0' DIA. MANHOLE INLINE WITH EXISTING 8" SS LINE TOP = 89.0 EX. 8" IN = 80.50 (FIELD VERIFY) EX. 8" OUT = 80.40 (FIELD VERIFY) 6" FL = 80.50
②	SEE MEP PLANS FOR CONTINUATION 5.0' FROM BUILDING EDGE STD. DOUBLE 6" CLEANOUT 6" FL = 81.08

WATER NOTATION	
①	CUT AND REMOVE EXISTING 8" W.L. INSTALL: 1 - 8" 45° BEND ④ - 8" GATE VALVE THRUST BLOCKING
②	INSTALL: 1 - 8" 45° BEND THRUST BLOCKING
③	INSTALL: 1 - 8" 45° BEND THRUST BLOCKING
④	INSTALL: 1 - 8" 45° BEND THRUST BLOCKING
⑤	CUT AND REMOVE EXISTING 8" W.L. INSTALL: ④ - 8" GATE VALVE 1 - 8"x8" TEE THRUST BLOCKING
⑥	INSTALL: 1 - 8"x8" REDUCER 20 LF 6" W.L. 1 - 6" GATE VALVE 1 - FIRE HYDRANT THRUST BLOCKING
⑦	CUT AND REMOVE EXISTING 8" W.L. INSTALL: 1 - 8"x8" TEE ④ - 8" GATE VALVE 1 - 8" PLUG THRUST BLOCKING
⑧	INSTALL: 1 - 8"x8" TEE 13 LF 8" W.L. 1 - 6" GATE VALVE 1 - FIRE HYDRANT THRUST BLOCKING
⑨	INSTALL: 1 - 8"x4" TEE 1 - 4" to 2" REDUCER 1 - 2"x2" TEE 2 - 2" 90° BENDS 52 LF 2" DOM. WATER SERVICE 2 - 2" WATER METERS SEE MEP PLANS FOR CONTINUATION
⑩	INSTALL: 1 - TEE 1 - REDUCER 5 LF FIRE LINE TO BE SIZED BY A LICENSED FIRE INSPECTOR 1 - DBL DETECTOR CHECK VALVE SEE MEP PLANS FOR CONTINUATION
⑪	INSTALL: 1 - 8" 90° BEND THRUST BLOCKING
⑫	INSTALL: 1 - 8" 90° BEND ④ - 8" GATE VALVE THRUST BLOCKING
⑬	CUT AND REMOVE EXISTING 8" W.L. INSTALL: 1 - 8" 90° BEND THRUST BLOCKING

GENERAL NOTES	
1.	FIRE LINE TO BE SIZED AND INSTALLED BY A STATE LICENSED FIRE SPRINKLER CONTRACTOR.
2.	SEE SHEET C1.03 "GRADING PLAN" FOR ALL SPOT GRADES AND PAVEMENT CONTOURS.
3.	ALL WORK UNLESS OTHERWISE NOTED SHALL CONFORM TO THE STANDARD SPECIFICATIONS FOR PUBLIC WORKS CONSTRUCTION ISSUED BY THE NORTH CENTRAL TEXAS COUNCIL OF GOVERNMENTS, AND THE CITY OF ADDISON UTILITIES DEPARTMENT STANDARD DETAILS AND SPECIFICATIONS FOR WATER AND SEWER FACILITIES.
4.	THE HORIZONTAL AND VERTICAL LOCATION OF EXISTING SUBSURFACE UTILITIES HAVE BEEN DETERMINED FROM DATA RECORDED BY OTHERS. IT WILL BE THE RESPONSIBILITY OF THE CONTRACTOR TO PROTECT ALL PUBLIC UTILITIES DURING CONSTRUCTION OF THE PROJECT.
5.	CONTRACTOR SHALL MAINTAIN ONE SET OF "AS-BUILT" DRAWINGS ON SITE WHICH WILL BE SUBMITTED TO THE OWNER OR ENGINEER UPON COMPLETION OF THE PROJECT. "AS-BUILTS" SHALL DEPICT ALL DIFFERING CONSTRUCTION.
6.	CONTRACTOR SHALL CALL 1-800-DIG-TESS TO HAVE U.G. LSG, SWBT AND TU FACILITIES LOCATED.
7.	ALL WATER MAINS SHALL BE PVC C900, DR 18, CLASS 150.
8.	ALL SANITARY SEWER MAINS SHALL BE PVC SDR-35.
9.	CONTRACTOR IS RESPONSIBLE FOR COMPLIANCE WITH ALL FEDERAL, STATE AND LOCAL REGULATIONS REGARDING TRENCH SAFETY.



24"x36" Scale: 1" = 20'
 11"x17" Scale: 1" = 40'
 Vertical Scale: NA
 Project Number:
 Issue Date: 28 FEB 2001
 Sheet Title:
UTILITY PLAN
 Sheet No.:

C1.06