

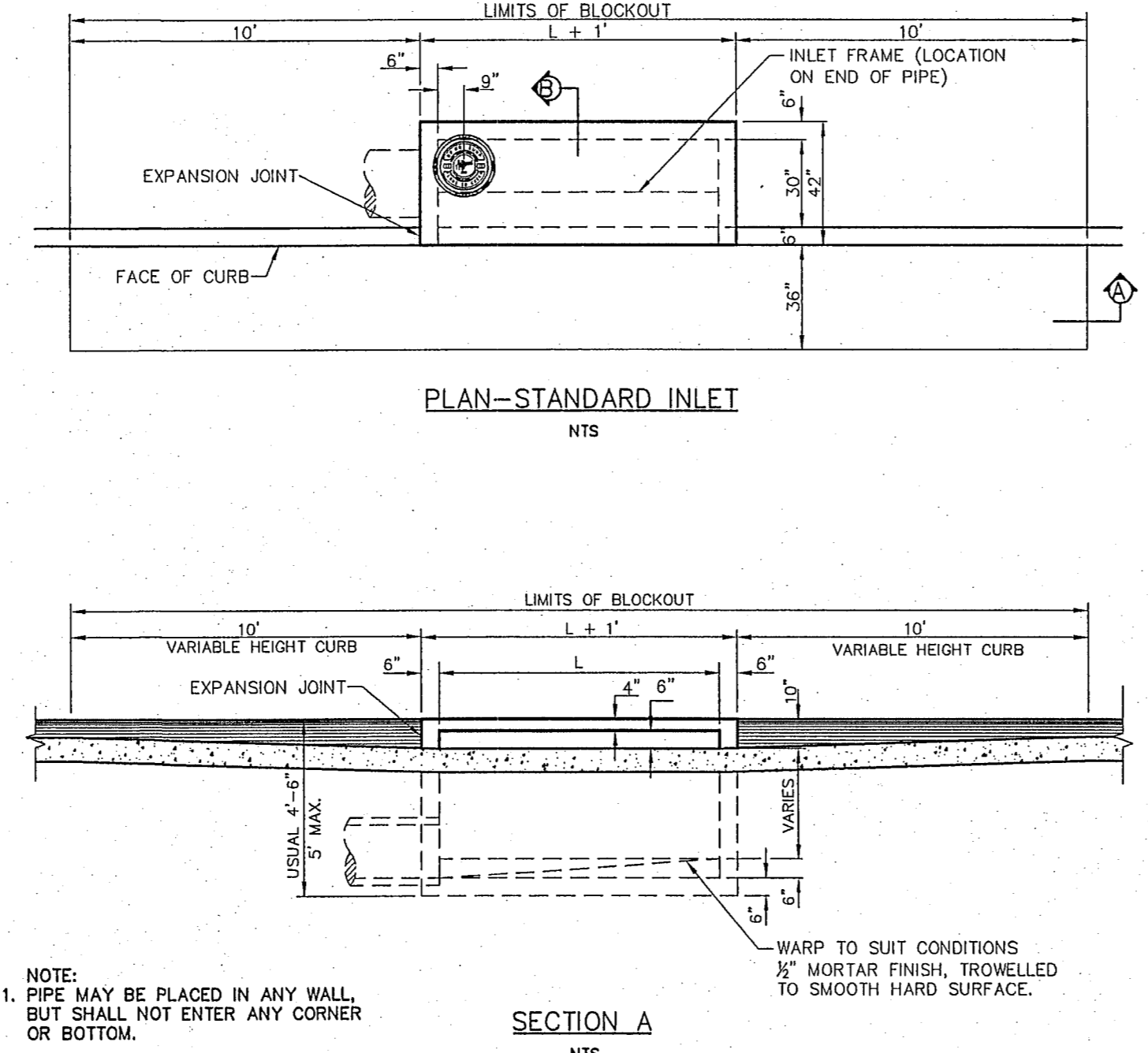
- NOTES:**
1. ALL LAPS AND EXTENSION OF REINFORCING BARS SHALL BE 36 BAR DIAMETERS UNLESS NOTED OTHERWISE.
 2. TACK WELD GRATES IN PLACE.
 3. PIPE MAY BE PLACED IN ANY WALL, BUT SHALL NOT ENTER ANY CORNER OR BOTTOM.
 4. ALL CAST IRON FITTINGS SHALL BE DOMESTIC.
 5. ALL FASTENERS SHALL BE GALVANIZED.

Addison!
PUBLIC WORKS DEPARTMENT

TWO GRATE INLET

STANDARD CONSTRUCTION DETAILS
STORM DRAINAGE

DATE: AUGUST, 2010 REV DATE: - SHEET: SD-D30



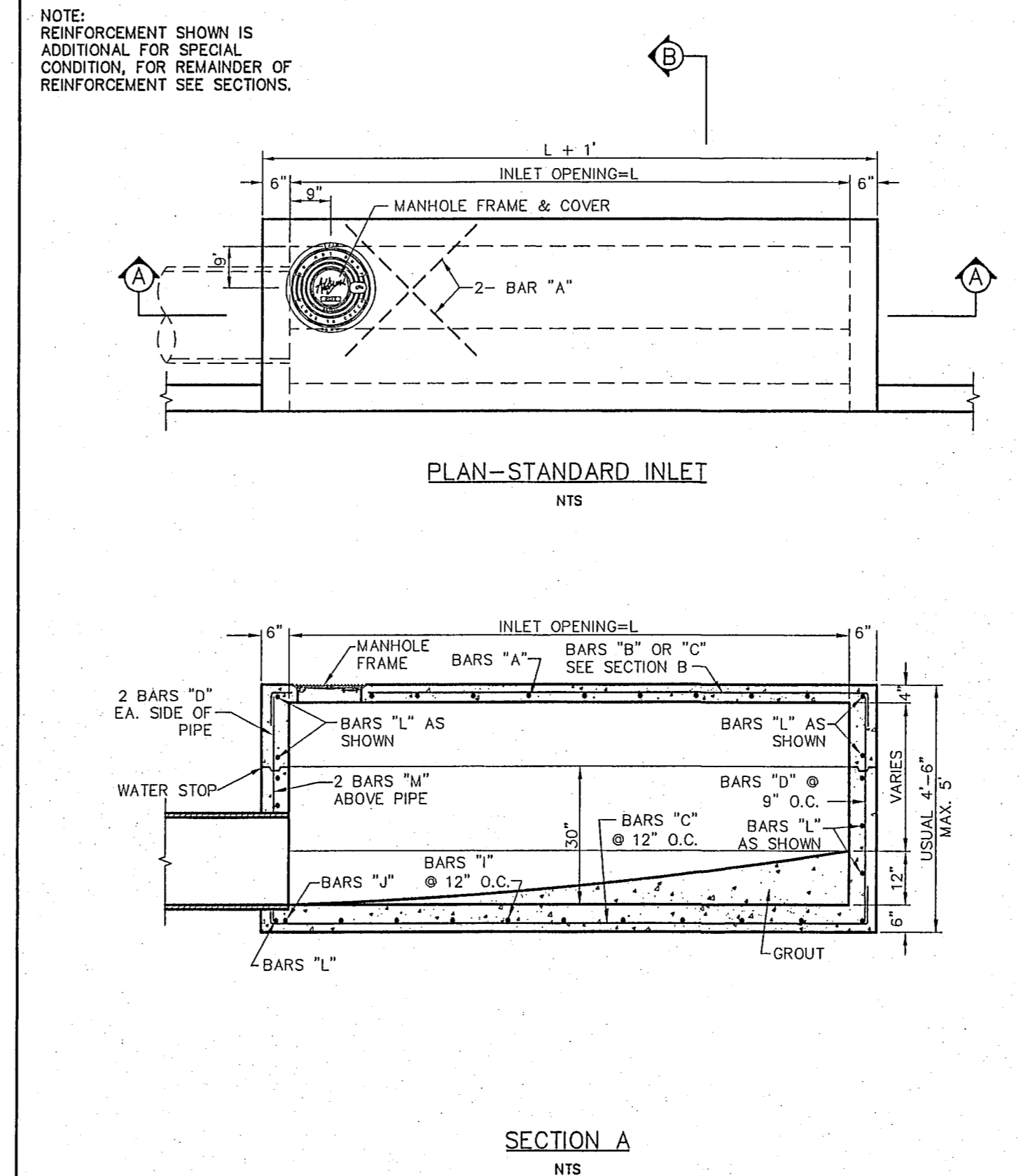
- NOTE:**
1. PIPE MAY BE PLACED IN ANY WALL, BUT SHALL NOT ENTER ANY CORNER OR BOTTOM.
 2. #3 BAR 18" O.C.E.W. IN BLOCK OUT DRILLED INTO EXISTING CONCRETE.
 3. BACKFILL AROUND INLET SHALL BE FLOWABLE BACKFILL PER NCTC09 504.2.3.4

Addison!
PUBLIC WORKS DEPARTMENT

STANDARD CURB INLET

STANDARD CONSTRUCTION DETAILS
STORM DRAINAGE

DATE: AUGUST, 2010 REV DATE: - SHEET: SD-D10

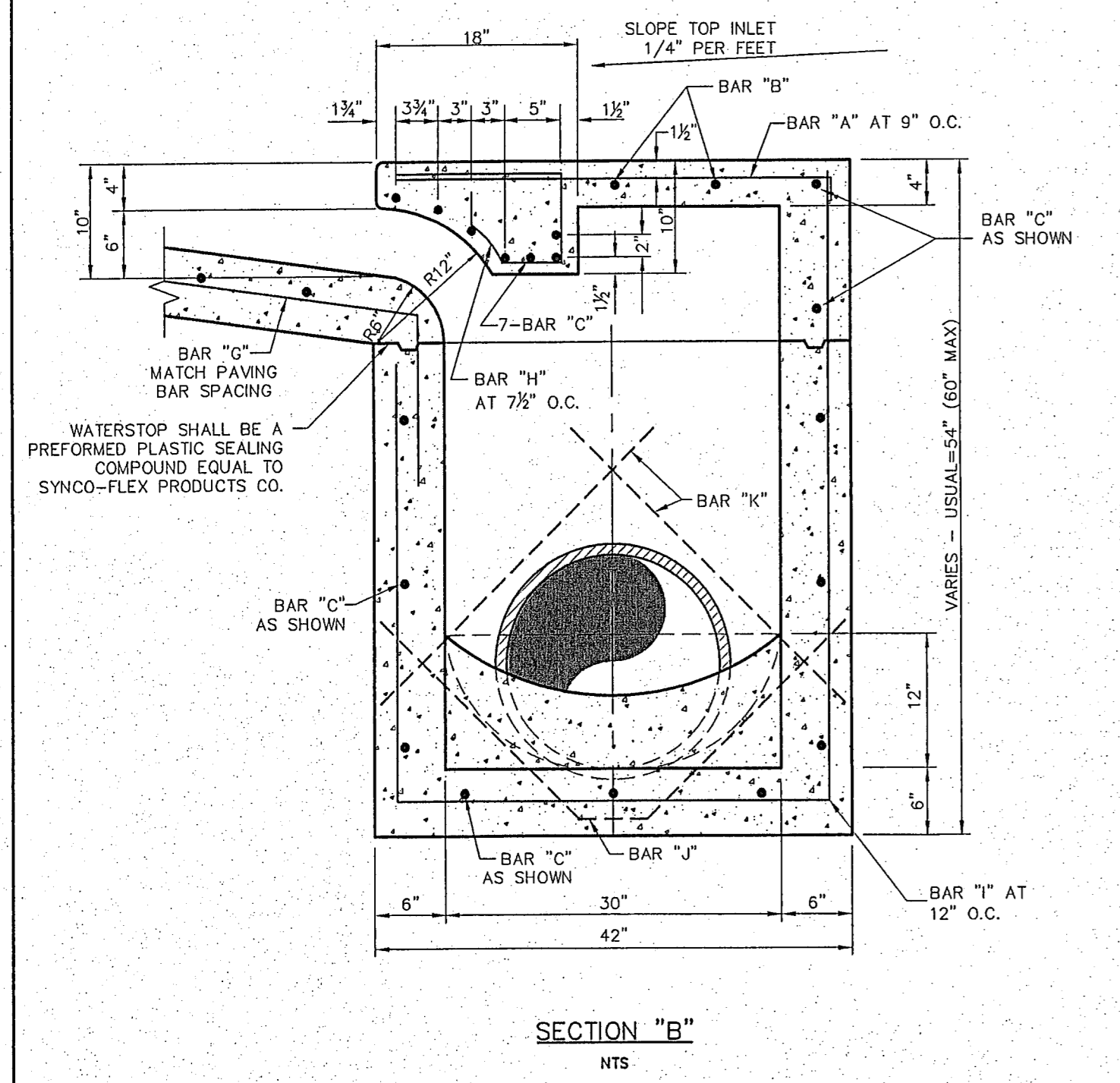


Addison!
PUBLIC WORKS DEPARTMENT

STANDARD CURB INLET 4, 6, 8 & 10 FOOT INLETS

STANDARD CONSTRUCTION DETAILS
STORM DRAINAGE

DATE: AUGUST, 2010 REV DATE: - SHEET: SD-D12



Addison!
PUBLIC WORKS DEPARTMENT

TYPICAL SECTION "B"
STANDARD & RECESSED CURB
INLETS
(4, 6, 8 & 10 FOOT INLETS)

STANDARD CONSTRUCTION DETAILS
STORM DRAINAGE

DATE: AUGUST, 2010 REV DATE: - SHEET: SD-D13

REINFORCING STEEL SCHEDULE DIMENSIONS SHOWN ARE FOR MAXIMUM SIZE INLET						
INLET LENGTH	BAR TYPE	BAR DIA. (1/2")	NO REQ'D	BAR DIMENSIONS		
				A	B	C
4'	A	3	6	3'-2"	0'-3"	-
4'	B	3	2	2'-10"	-	-
4'	C	4	18	4'-8"	0'-6"	-
4'	D	4	9	4'-8"	-	-
4'	E	3	4	2'-0"	1'-3"	-
4'	H	3	7	*	*	*
4'	I	4	3	3'-2"	3'-2"	4'-8"
4'	J	5	1	*	*	*
4'	K	5	2	3'-2"	0'-6"	-
4'	L	4	11	3'-2"	0'-6"	-
4'	M	4	2	3'-0"	-	-
6'	A	3	9	3'-2"	0'-3"	-
6'	B	3	2	4'-10"	-	-
6'	C	4	18	6'-8"	0'-6"	-
6'	D	4	9	4'-8"	-	-
6'	E	3	6	2'-0"	1'-3"	-
6'	H	3	11	*	*	*
6'	I	4	5	3'-2"	3'-2"	4'-8"
6'	J	5	1	*	*	*
6'	K	5	2	3'-2"	0'-6"	-
6'	L	4	11	3'-2"	0'-6"	-
6'	M	4	2	3'-0"	-	-
8'	A	3	12	3'-2"	0'-3"	-
8'	B	3	2	6'-10"	-	-
8'	C	4	18	8'-8"	0'-6"	-
8'	D	4	9	4'-8"	-	-
8'	E	3	7	2'-0"	1'-3"	-
8'	H	3	14	*	*	*
8'	I	4	7	3'-2"	3'-2"	4'-8"
8'	J	5	1	*	*	*
8'	K	5	2	3'-2"	0'-6"	-
8'	L	4	11	3'-2"	0'-6"	-
8'	M	4	2	3'-0"	-	-
10'	A	3	15	3'-2"	0'-3"	-
10'	B	3	2	8'-10"	-	-
10'	C	4	18	10'-8"	0'-6"	-
10'	D	4	9	4'-8"	-	-
10'	E	3	9	2'-0"	1'-3"	-
10'	H	3	17	*	*	*
10'	I	4	8	3'-2"	3'-2"	4'-8"
10'	J	5	1	*	*	*
10'	K	5	2	3'-2"	0'-6"	-
10'	L	4	11	3'-2"	0'-6"	-
10'	M	4	2	3'-0"	-	-

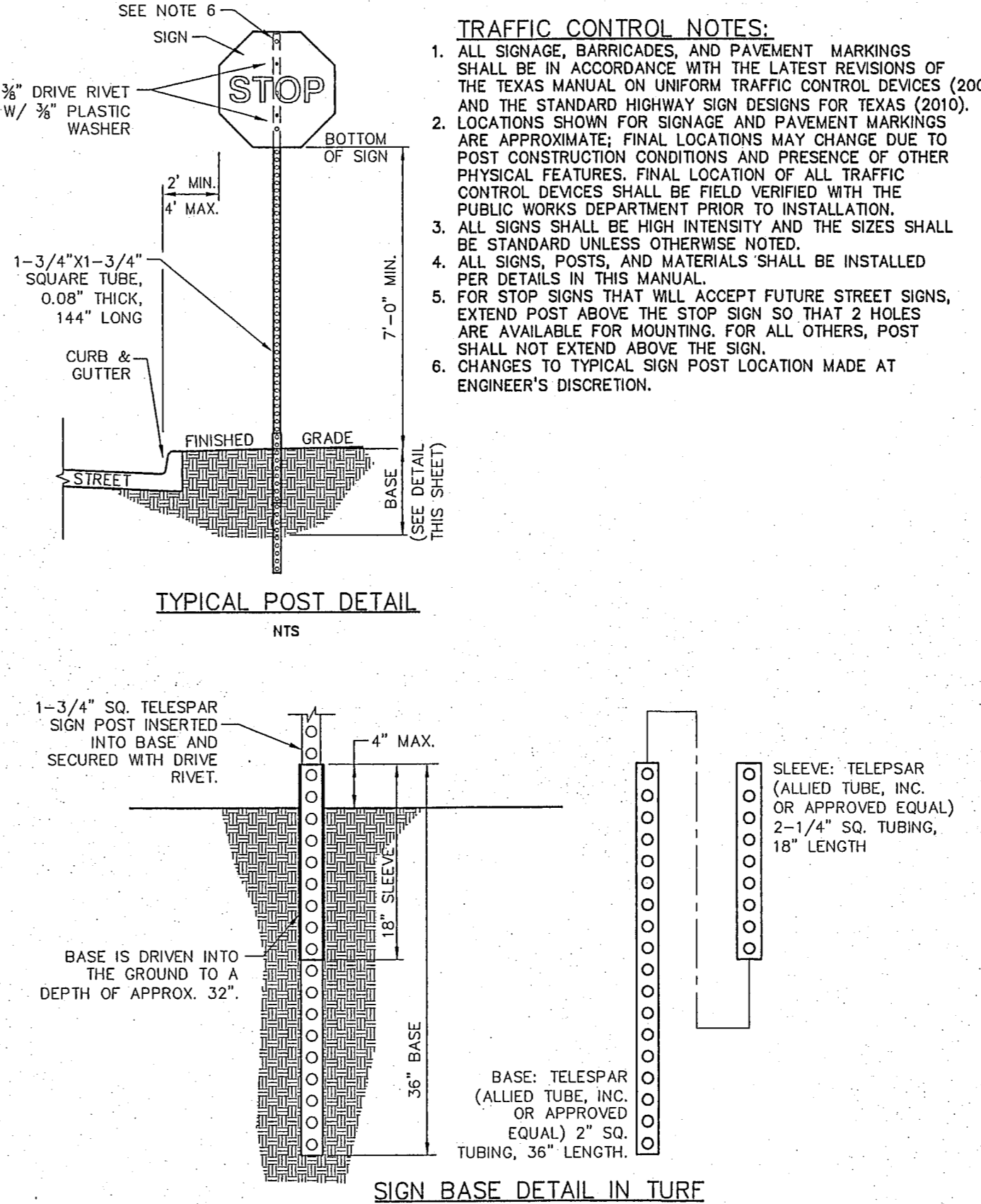
* SEE DIAGRAM FOR DIMENSIONS
** FIELD CUT AS REQUIRED TO ACCOMMODATE DRAIN PIPE

Addison!
PUBLIC WORKS DEPARTMENT

REINFORCING STEEL SCHEDULE
4, 6, 8 & 10 FOOT INLETS

STANDARD CONSTRUCTION DETAILS
STORM DRAINAGE

DATE: AUGUST, 2010 REV DATE: - SHEET: SD-D14



Addison!
PUBLIC WORKS DEPARTMENT

SIGN POST IN TURF
DETAIL

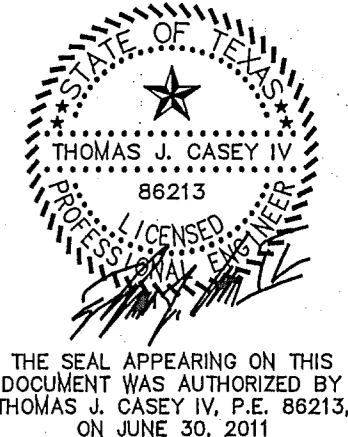
STANDARD CONSTRUCTION DETAILS
TRAFFIC

DATE: AUGUST, 2010 REV DATE: - SHEET: SD-D15

GLENN ENGINEERING
PHONE 972-717-5151
105 DECKER COURT-SUITE 910
IRVING, TEXAS 75062
T.B.P.E. FIRM # F - 303

TRINITY CHRISTIAN ACADEMY
PARKING ADDITIONS

SITE DETAILS



Issue Dates:
Review: Bid March 7, 2011
1 Revised Grading & HC Parking May 2, 2011
2 Re-Bid May 11, 2011
3 Town Comments, June 7, 2011
4 Town Comments #2, Removed Loop Road June 30, 2011

Construction:
Scale: AS NOTED
Drawn By: TJC
Checked By: CMA

Project No.: 10-599.150
Sheet 11A
of 13