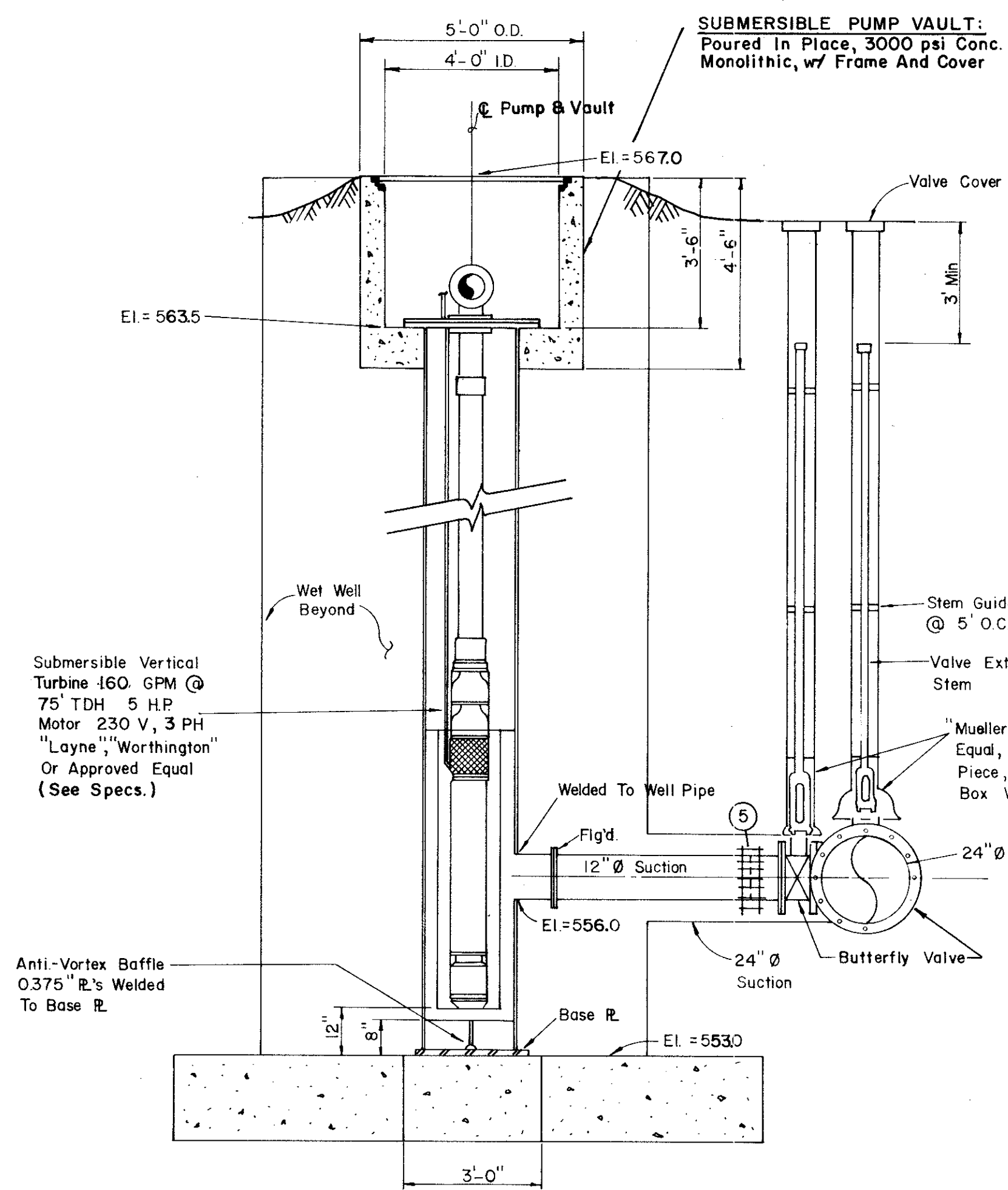
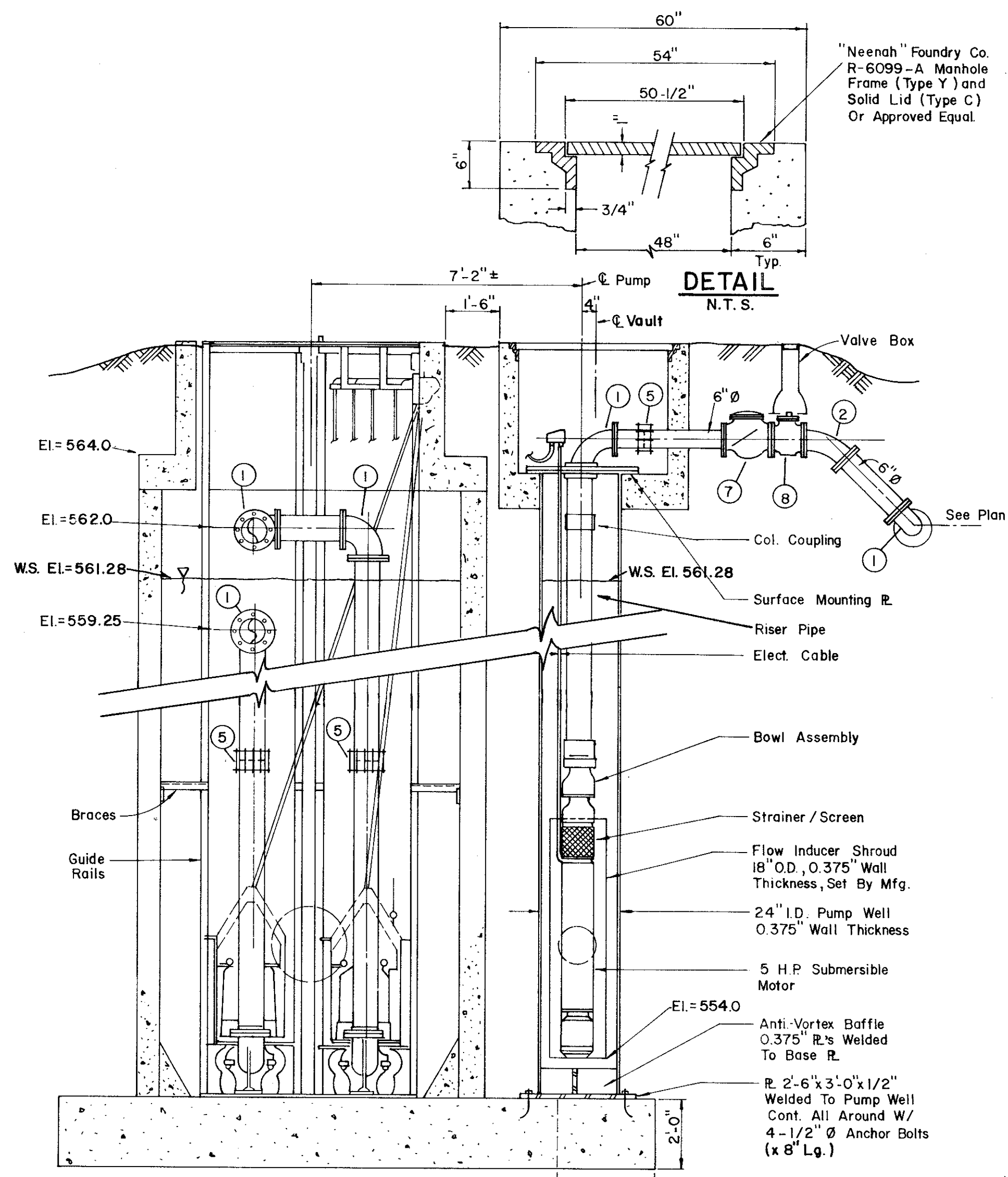


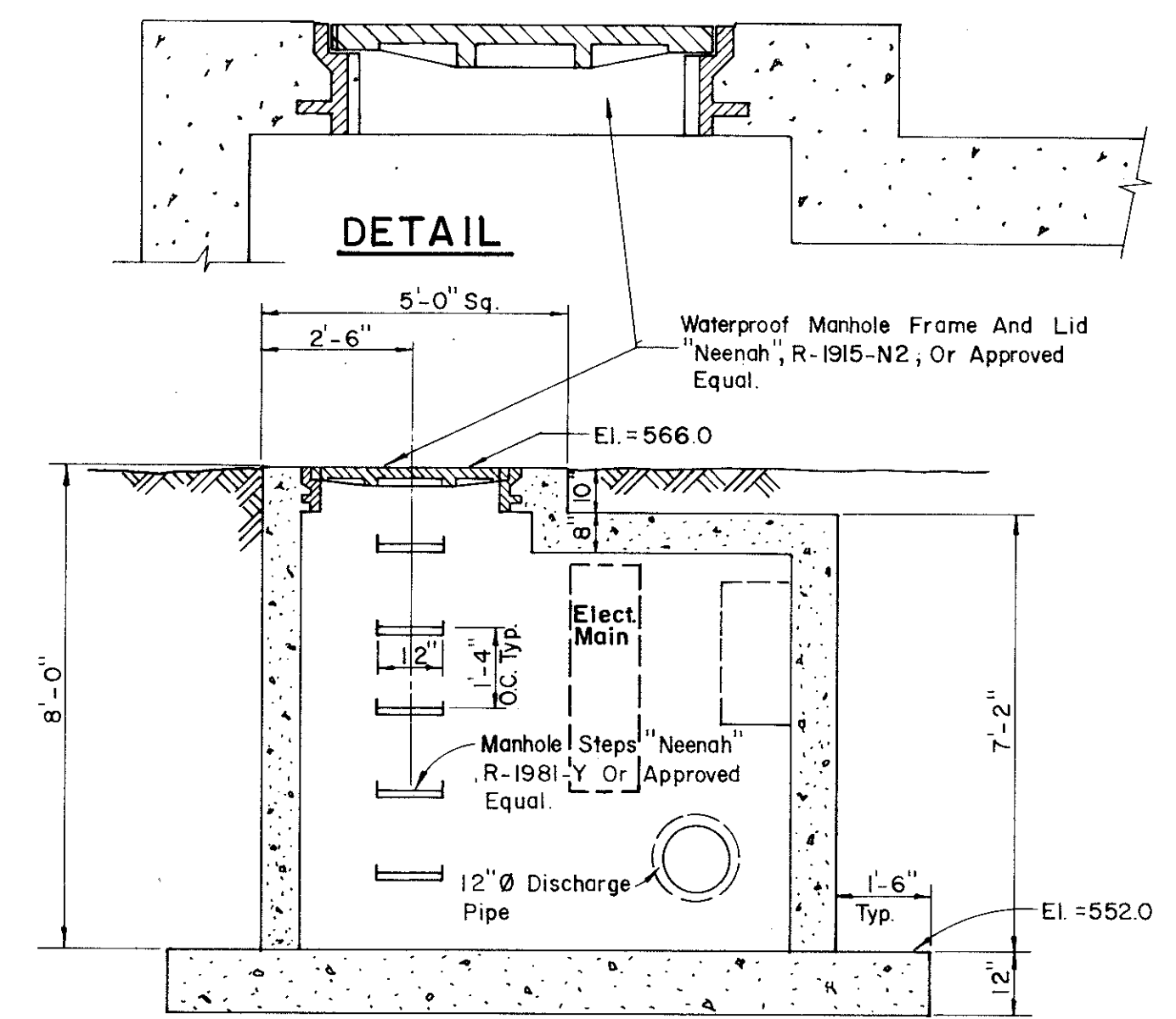
TOP VIEW



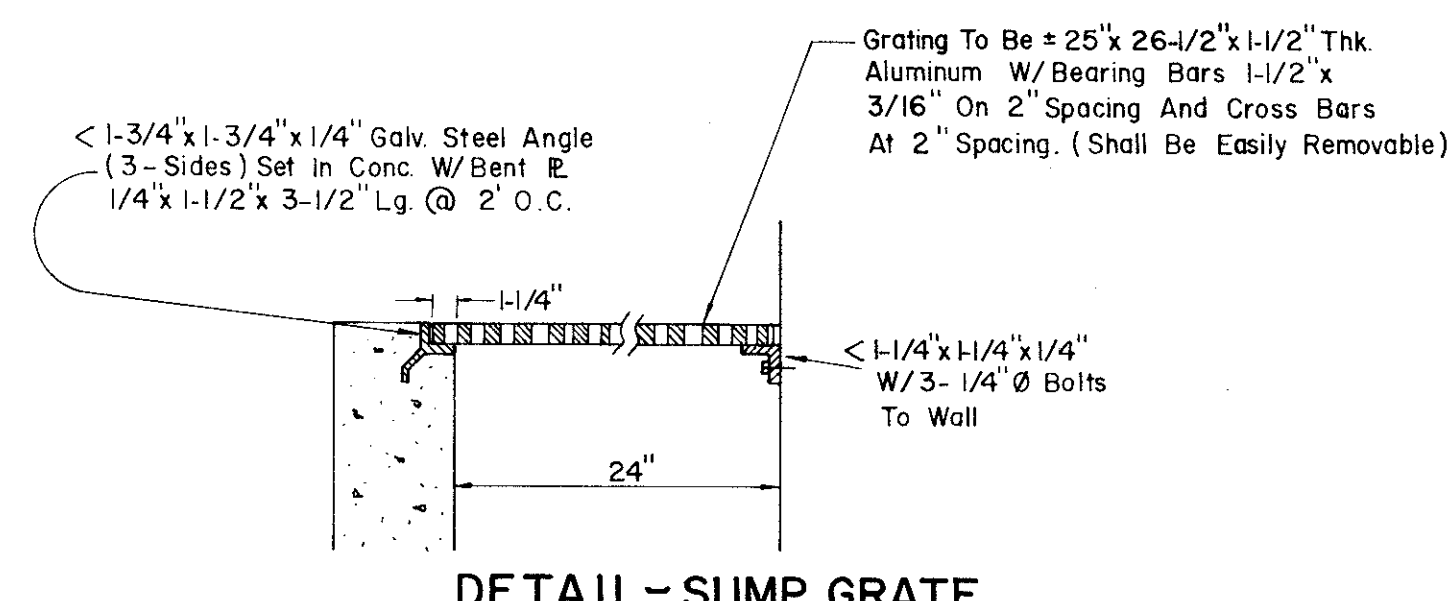
SECTION B



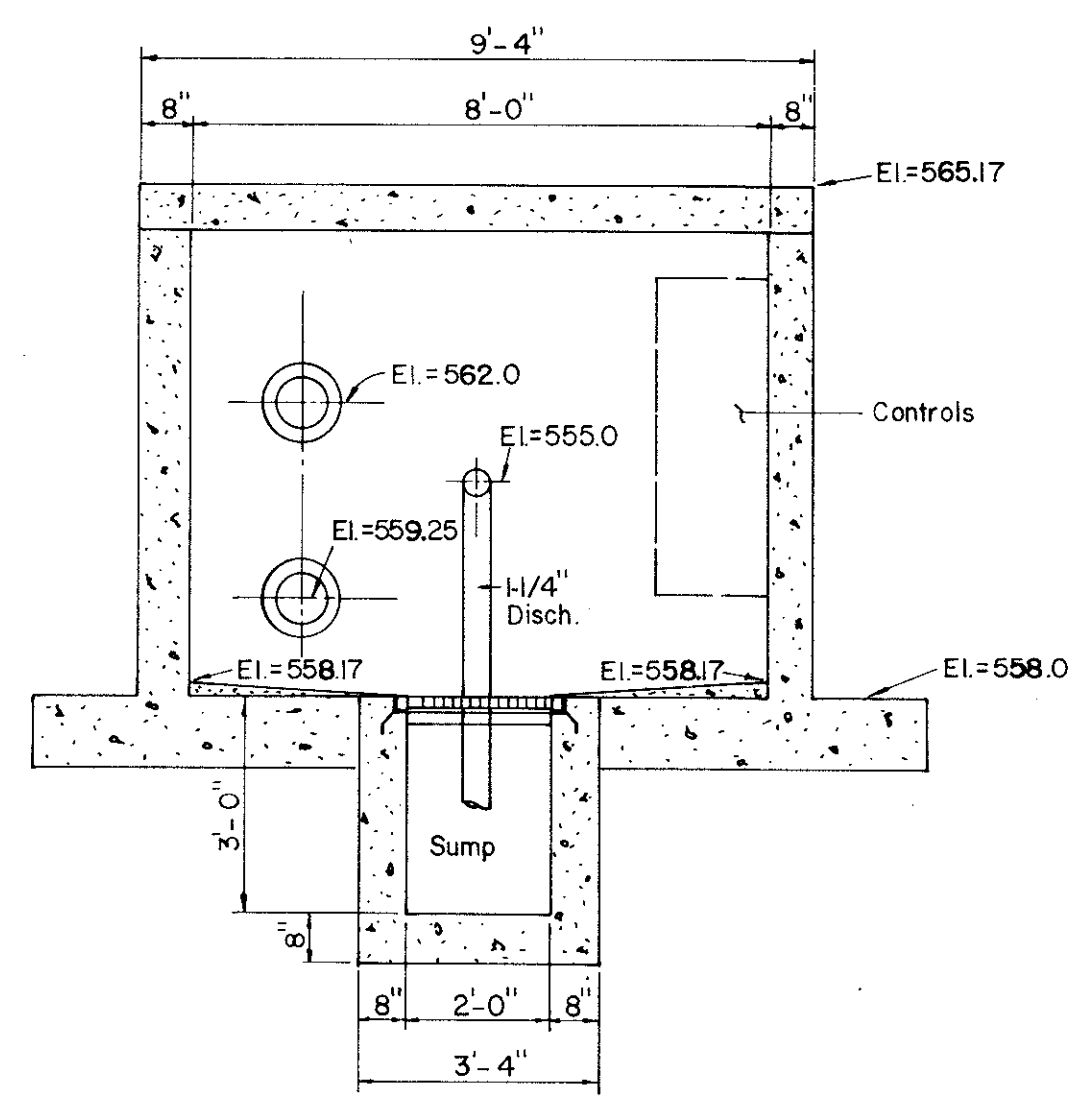
SECTION C



SECTION D



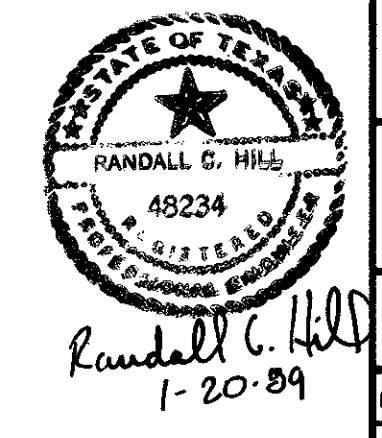
DETAIL - SUMP GRATE



SECTION E

- LEGEND
- ① 90° Bend (Flanged)
 - ② 45° Bend (Flanged)
 - ③ 8" x 8" x 8" Lateral (Flanged)
 - ④ 12" x 8" Reducer (Flanged)
 - ⑤ "Dresser" Type Coupling (Size Indicated)
 - ⑥ Cast In Place Wall Pipe (Fig. & P.E.)
 - ⑦ "Clow" F-1426, Or Approved Equal
 - ⑧ Check Valve (See Specs)
 - ⑨ Plug Valve (See Specs)
 - ⑩ 1-1/4" Check Valve
 - ⑪ 1-1/4" Gate Valve

NOTE: SEE SHEETS 6 & 7 FOR STEEL DESIGN



No.	Revision	By	Date
TOWN OF ADDISON DALLAS COUNTY, TEXAS CREEK SYSTEM IMPROVEMENTS FINANCE CENTER PUMP STATION DETAILS GINN, INC. Consulting Engineers Dallas, Texas			
Designed - AGF	Drawn - CL	Date - DEC. 1988	Job No. - 369
Approved - HWG	Checked - RCH	Scale - 3/8" = 1'-0"	Sheet 16 OF 23