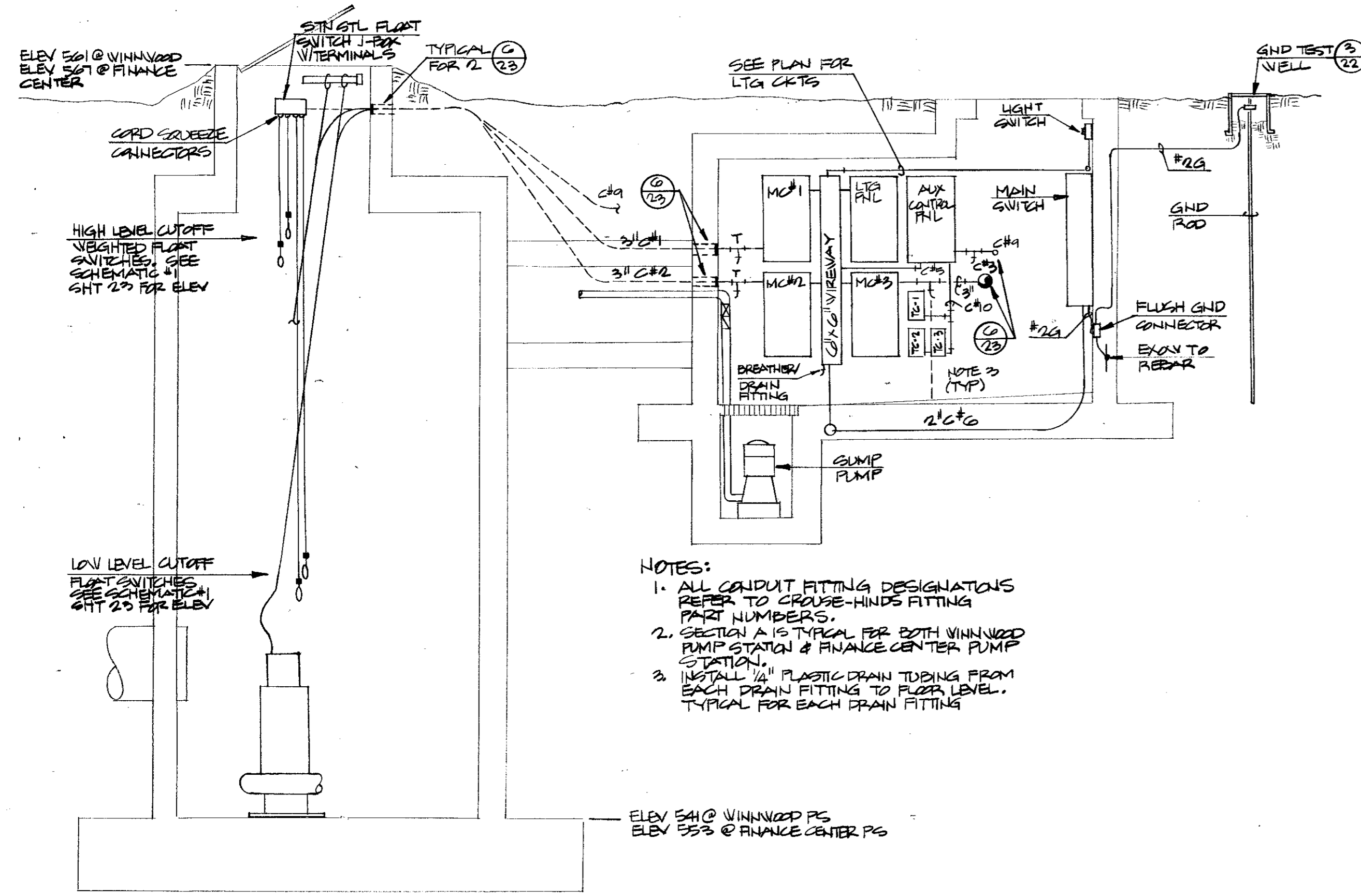


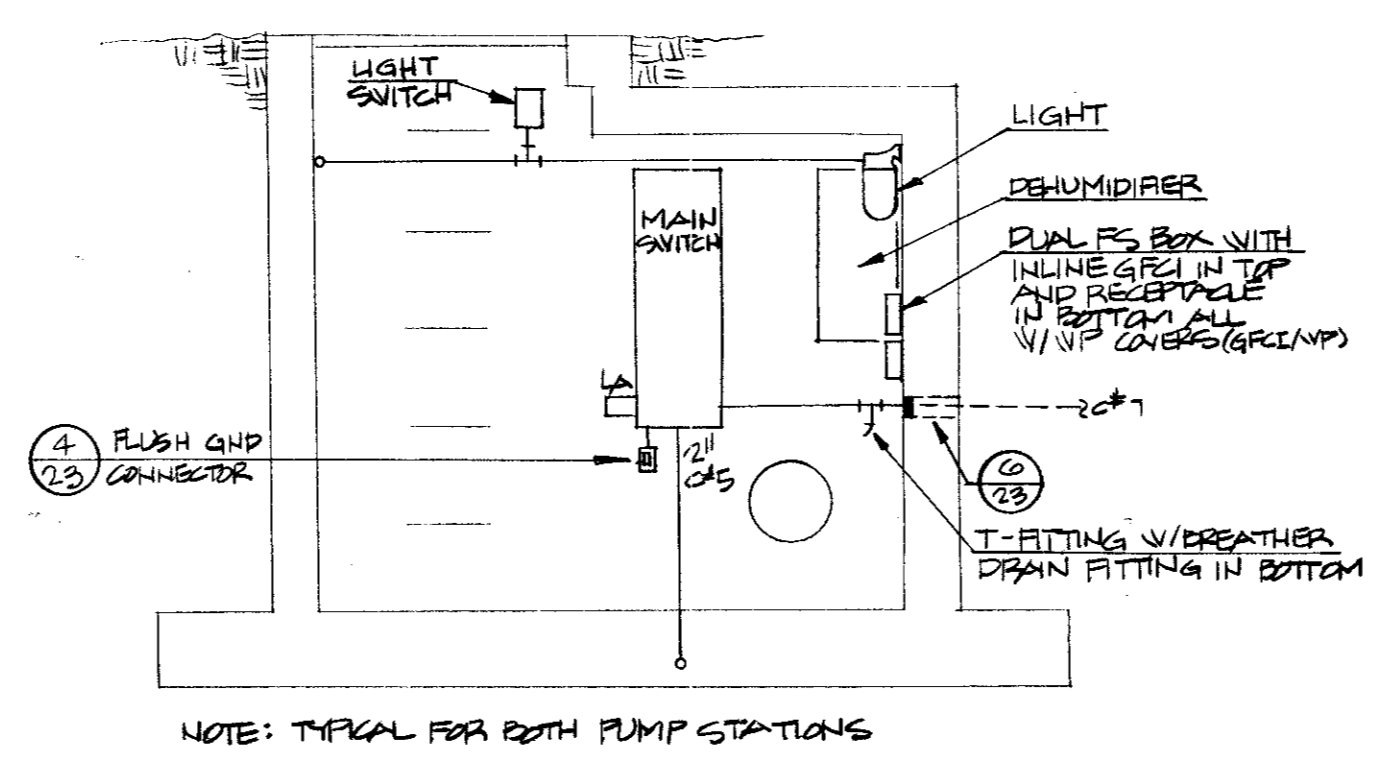
**1 ELECTRICAL PLAN**  
SCALE 3/8" = 1'-0"

CONDUIT AND CABLE SCHEDULE		
CONDUIT TAG	WINWOOD PUMP STATION	FINANCE CENTER PUMP STATION
C # 1	PMP MFR CABLES 3" C	PMP MFR CABLES 3" C
C # 1N	3 #6, #8G, 1" C 3 #10, #10N, #10G 4 #14 CONTROL	3 #6, #8G, 1" C 3 #10, #10N, #10G 4 #14 CONTROL
C # 2	PMP MFR CABLES, 3"C	PMP MFR CABLES, 3"C
C # 2N	3 #6, #8G, 1" C 4 #14 CONTROL	3 #6, #8G, 1" C 4 #14 CONTROL
C # 3	PMP MFR CABLES, 3"C	PMP MFR CABLES, 1-1/2" C
C # 3N	3 #6, #8G, 1" C 4 #14 CONTROL	3 #6, #8G, 1" C 4 #14 CONTROL
C # 4	2 #3, #3N, #6G, 1"C	2 #3, #3N, #6G, 1"C
C # 5	3 #10, #10 N, #10 G, 1"C & 6 #14, #14 G (2 CONTROL WIRES TO EACH MC)	3 #10, #10 N, #10G, 1"C & 6 #14, #14G (2 CONTROL WIRES TO EACH MC)
C # 6	3 #4/0, #3N, #4G 2"	3 #4/0, #3N, #4G 2"C
C # 7	3 #4/0, #3N, #4G 2"C	3 #4/0, #3N, #4G 2"C
C # 8	3 #4/0, #3N, 2"C	3 #4/0, #3N, 2"C
C # 9	8 #14, #14G 1"C	8 #14, #14G 1"C
C # 10	1 #14, #14N, #14G AND 2 #14, FOR CONTROL TO EACH TIME CLOCK	1 #14, #14N, #14G AND 2 #14, FOR CONTROL TO EACH TIME CLOCK

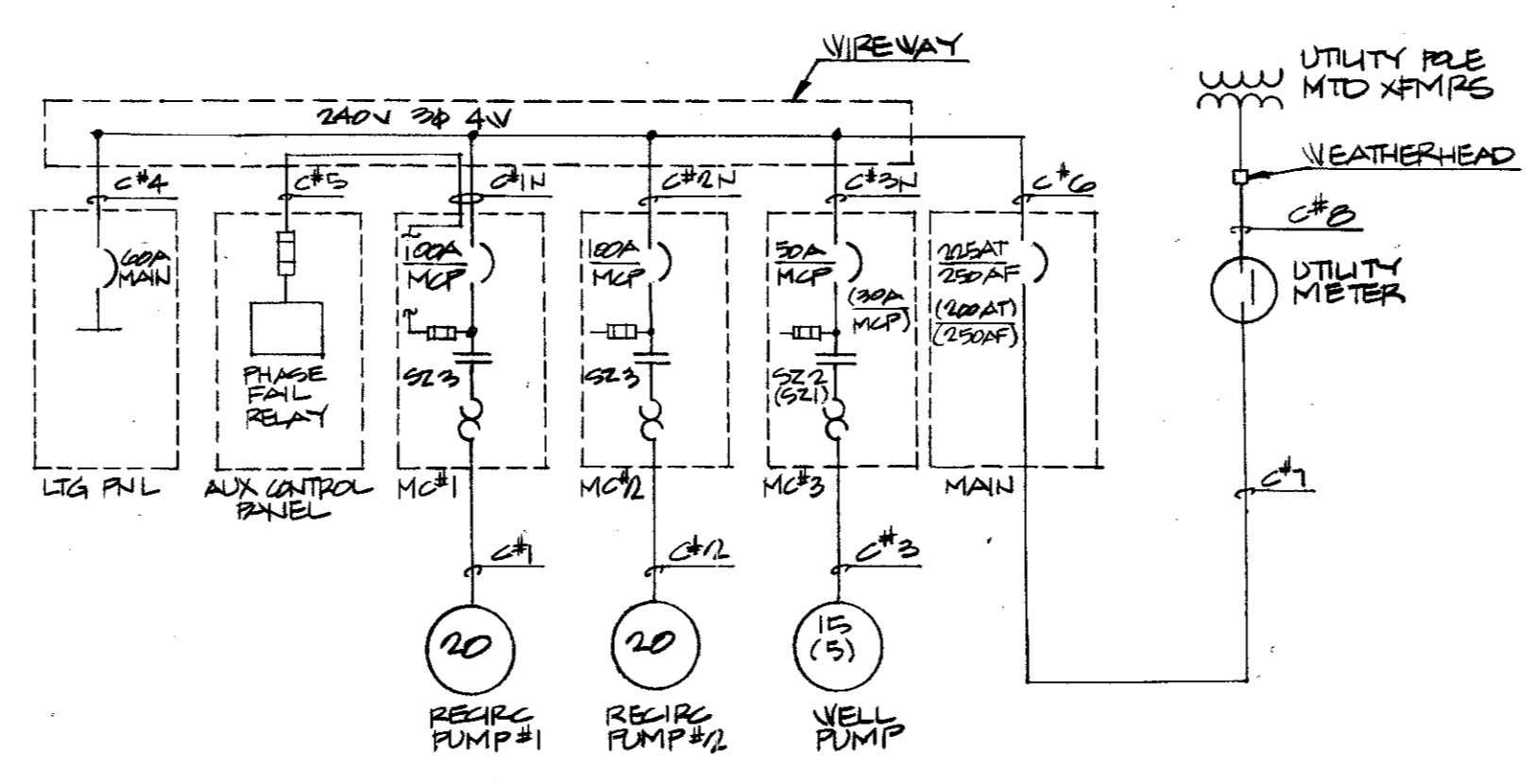
LEGEND	
BELOW GRADE WIRING	CURRENT TRANSFORMER
EXPOSED WIRING	BOLT INTO DRILLED EXPANSION SHEILD
HOME RUN - HOT, NEUTRAL, EGC SHOWN	SWITCH MOUNTED IN SURFACE WALL BOX
MOTOR - SHIP SHOWN	DUPLEX RECEPT IN SURFACE WALL BOX
CEILING MOUNTED LIGHT FIXTURE	REMOTE DEVICE
WALL MOUNTED LIGHT FIXTURE	FUSE
FLUORESCENT FIXTURE	GROUND
POLE FLOODLIGHT (2 LUMINAIRES SHOWN)	GROUND FAULT RELAY & CT
EMERGENCY LIGHT FIXTURE	OVERLOADS
PILOT LIGHT, RED SHOWN	SAFETY SWITCH
MOTOR CONTROLLER (STARTER)	FUSED SAFETY SWITCH
NORMALLY CLOSED CONTACTS	SAFETY SWITCH WITH CIRCUIT BREAKER
NORMALLY OPEN CONTACTS	THERMOSTAT (AS USED ON PLANS)
LIMIT SWITCH - NORMALLY OPEN SHOWN	CONDUIT RISE
MOMENTARY OFF PUSHBUTTON	CONDUIT DROP
MOMENTARY ON PUSHBUTTON	CONTACTOR COIL
MAINTAINED PUSHBUTTON	CIRCUIT BREAKER
VOLTMETER	SURGE CAPACITOR
VOLTMETER WITH PHASE SELECTOR SWITCH	LIGHTNING ARRESTER
AMMETER	JUNCTION BOX
AMMETER WITH PHASE SELECTOR SWITCH	TIMED CONTACTS
PRESSURE SWITCH	THERMOSTAT (AS USED ON DIAGRAMS)
FLOW SWITCH	LIQUID LEVEL SWITCH
DRAW-OUT CONTACTS	TRANSFORMER
DUPLEX RECEPTACLE	PHASE OR DIAMETER
SPECIAL OUTLET	TELEPHONE OUTLET
FLUSH FLOOR RECEPTACLE	FLUSH FLOOR TELEPHONE OUTLET
T-FITTING	WEATHER DRAIN FITTING
TA-FITTING	FIELD TERMINAL
AFB ABOVE FINISHED FLOOR	MIV MOTORIZED INTAKE VENT
LA LIGHTNING ARRESTER	LS LIMIT SWITCH
EC EMPTY CONDUIT	FVNR FULL VOLTAGE NON-REVERSING
PB PUSHBUTTON	RVNR REDUCED VOLTAGE NON-REVERSING
HOA HAND-OFF-AUTOMATIC SELECTOR SWITCH	GFP GROUND FAULT PROTECTION
LTF LIQUID TIGHT FLEXIBLE CONDUIT	SFCI GROUND FAULT CIRCUIT INTERRUPTER
RPO REMOTE PILOT OPERATOR	CPT CONTROL POWER TRANSFORMER
HDB HOT DIP GALVANIZED	Cu COPPER
EGC EQUIPMENT GROUNDING CONDUCTOR	EOEH ELECTRICALLY OPERATED ELECTRICALLY HELD
MCP MOTOR CIRCUIT PROTECTOR	EOMH ELECTRICALLY OPERATED MECHANICALLY HELD
BFP BLOWN FUSE PROTECTION	PC PHOTOCELL
ETM ELAPSED TIME METER	ICTO INSTANT CLOSE, TIMED OPEN
MSP MAIN SERVICE PANEL	TCIO TIMED CLOSE, INSTANT OPEN
HDW HARDWARE	NOTC NORMALLY OPEN, TIMED CLOSE
HH HANDHOLE	CT CURRENT TRANSFORMER
STN STN STAINLESS STEEL	OLS OVERLOADS
CKT CIRCUIT	DES DRILLED EXPANSION SHEILD
BKKT BRACKET	ASC ALUMINUM SLOTTED CHANNEL
MBO MOTORIZED BACKDRAFT DAMPER	CONC CONCRETE
MV MERCURY VAPOR	PWR POWER
WPS HIGH PRESSURE SODIUM	EXP EXPANSION/DEFLECTION
S/S SAFETY SWITCH	WTO MOUNTED
S DST SWITCH	NO NORMALLY OPEN
S <sub>1</sub> SPST SWITCH	NC NORMALLY CLOSED
S <sub>2</sub> SPDT SWITCH	COND CONDUIT
S <sub>3</sub> DPDT SWITCH	EF EXHAUST FAN
S <sub>4</sub> SWITCH WITH PILOT LIGHT	LLOD LOW LEVEL CUT OFF
S <sub>5</sub> MANUAL MOTOR STARTER	ALUM ALUMINUM
N/P NAME PLATE	S/N SOLID NEUTRAL
DC ON CENTER	XFR TRANSFORMER
WP WEATHER PROOF	XMTX TRANSMITTER
RECEPT RECEPTACLE	XPR TRANSFER
RTD REMOTE TEMPERATURE DETECTOR	GND GROUND, GROUNDING, GROUNDED
EXOW EXOTHERMIC WELD	PVC POLYVINYL CHLORIDE
PCC PLASTIC COATED CONDUIT	SWGR SWITCHGEAR
ZRC ZINC RICH COMPOUND	RECR RECEIVER
CR CONTROL RELAY	FLA FULL LOAD AMPERAGE
BRG BEARING	MCC MOTOR CONTROL CENTER
PHL PANEL	HTG HEATING
SCH SCHEDULE	TYP TYPICAL
PMT PAD MOUNTED TRANSFORMER	FDR FEEDER
SZ SIZE	MFR MANUFACTURER
SW SWITCH	TDR TIME-DELAY RELAY
RPO REMOTE PILOT DEVICE	SF SUPPLY FAN
HD HIGH INTENSITY DISCHARGE	HTR HEATER
LPS LOW PRESSURE SODIUM	ITR INDICATE, TOTALIZE, RECORD
MH METAL HALIDE	DBL DOUBLE
LT LIGHT	GP PHASE PROTECTION
MLO MAIN LOSS ONLY	UH UNIT HEATER
MTR MOTOR	UB UNDERGROUND
N NEUTRAL	
MC MOTOR CONTROLLER	
(23) DETAIL REFERENCE - TOP #	
(24) INDICATES DETAIL - BOTTOM #	
(25) INDICATES SHEET #	



**2 SECTION A**  
SCALE 3/8" = 1'-0"

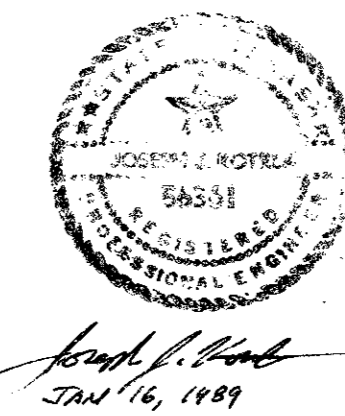


**3 SECTION B**  
SCALE 3/8" = 1'-0"



**4 ONE LINE DIAGRAM**

NOTES:  
1. ONE LINE DIAGRAM SHOWN IS TYPICAL FOR BOTH WINWOOD PUMP STATION & FINANCE CENTER PUMP STATION. WELL PUMP IS SHIP AT WINWOOD & SHIP AT FINANCE CENTER PUMP STATION. RATING FOR MCB'S & MAIN SW ARE SHOWN IN PARALLELS FOR FINANCE CENTER PUMP STATION. FURNISH & INSTALL ALL ELECTRICAL EQUIPMENT FOR BOTH PUMP STATIONS.



No.	Revision	By	Date
TOWN OF ADDISON DALLAS COUNTY, TEXAS <b>CREEK SYSTEM IMPROVEMENTS</b> ELECTRICAL <b>TYPICAL PUMP STATION</b> GINN, INC. Consulting Engineers Dallas, Texas			
Designed - JK	Drawn - JW	Date - DEC., 1988	Job No. - 369
Approved - JK	Checked - JK	Scale - 3/8" = 1'-0"	Sheet 22 of 23