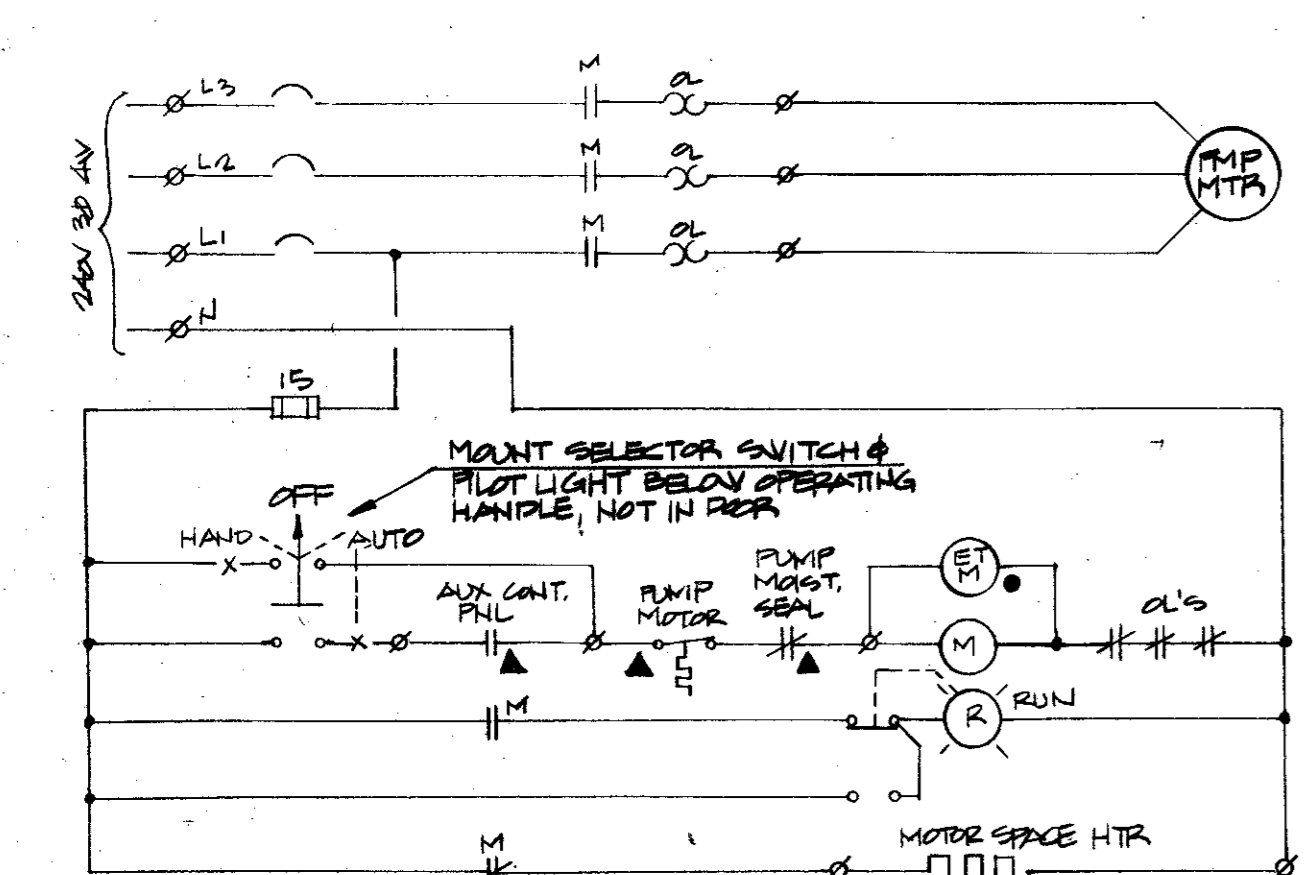
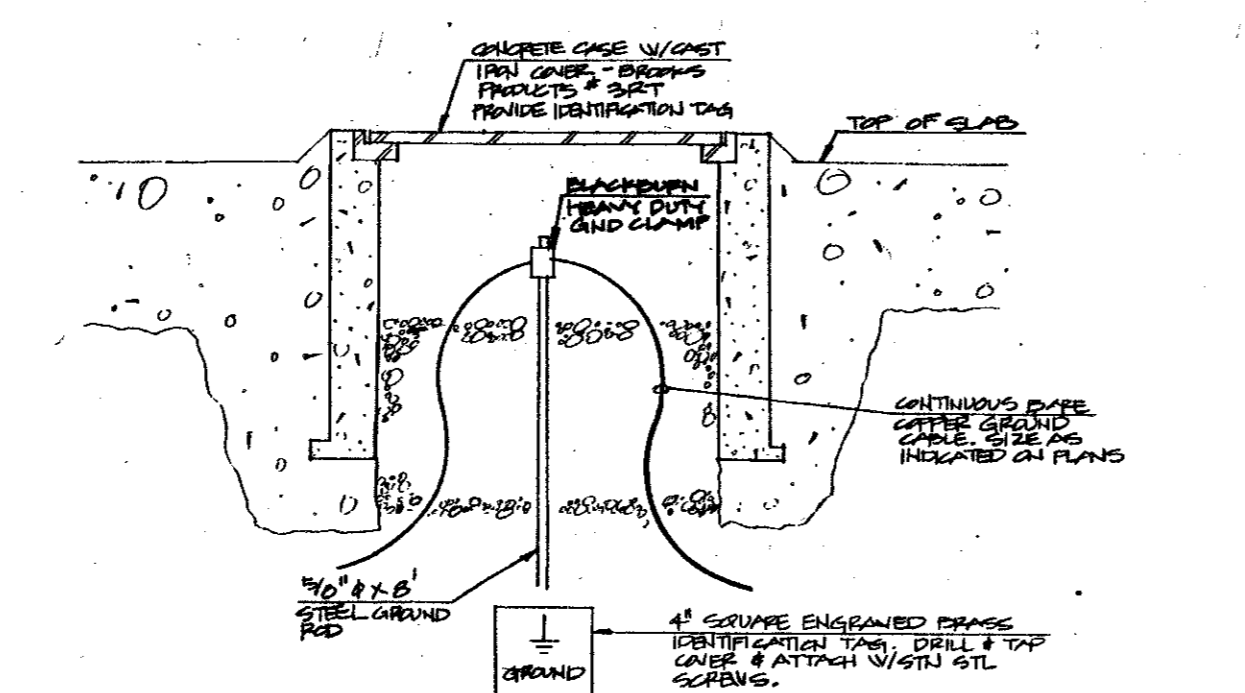


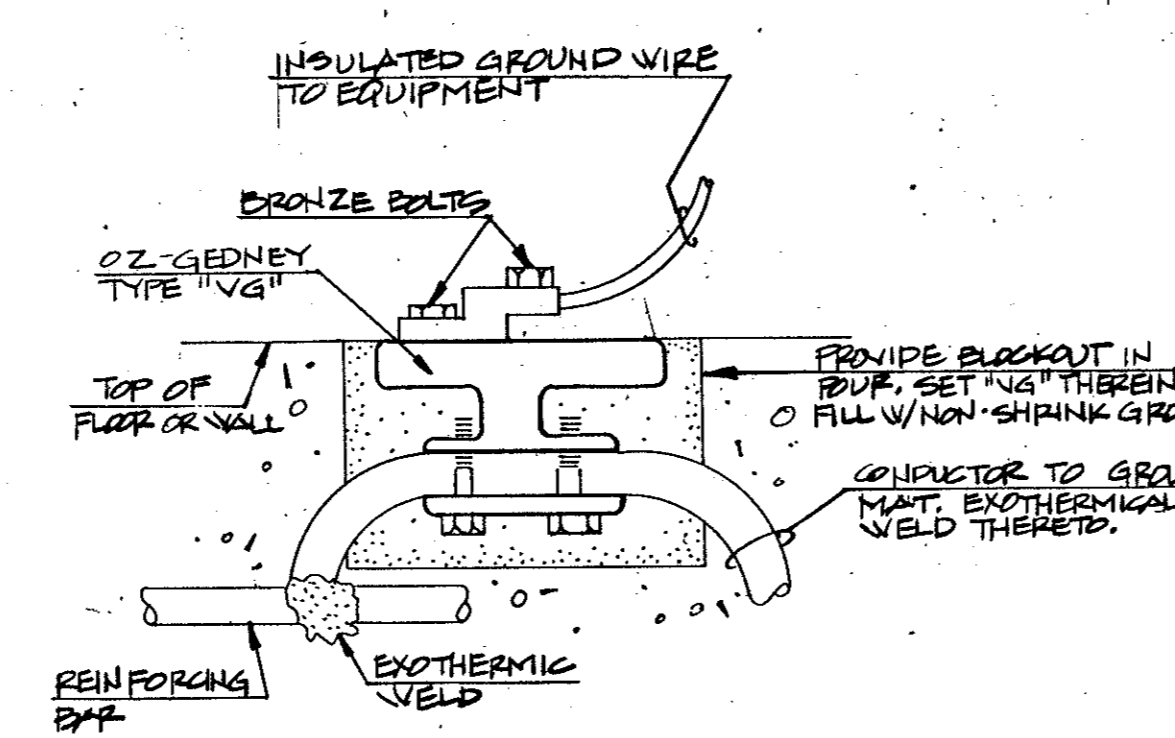
1 AUXILIARY CONTROL PANEL SCHEMATIC



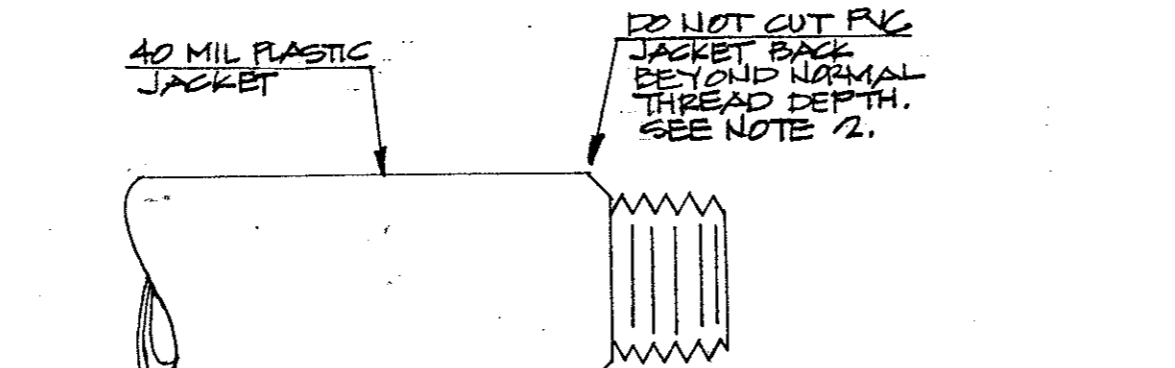
2 PUMP STARTER CONTROL SCHEMATIC



3 GROUND ROD & WELL

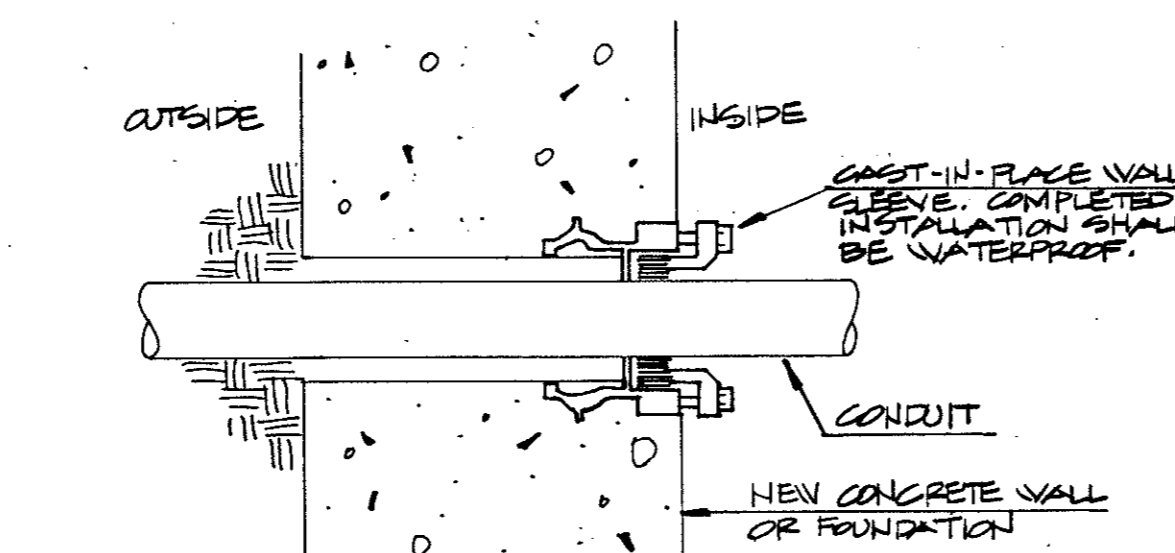


4 IN-SLAB GROUNDING CONNECTOR

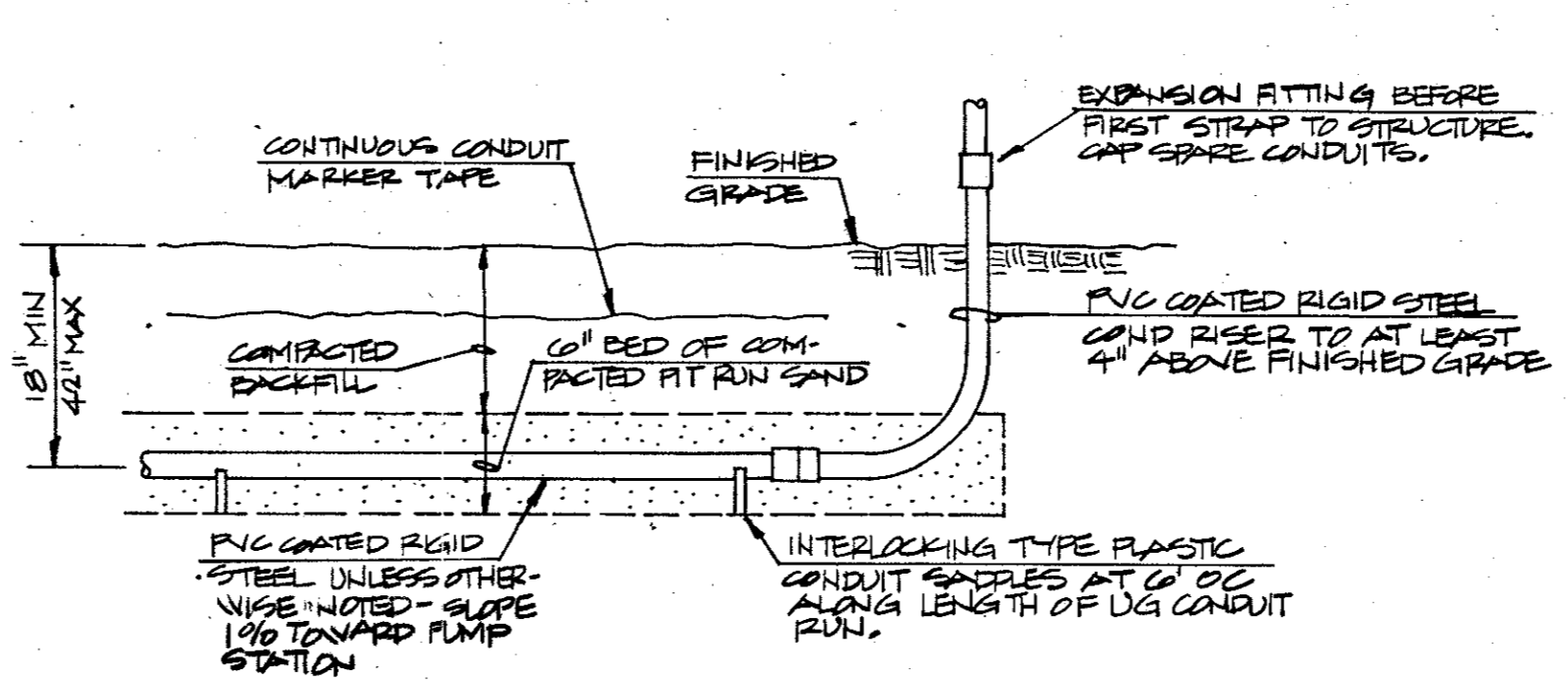


5 FIELD THREADING OF PVC COATED METALLIC CONDUIT

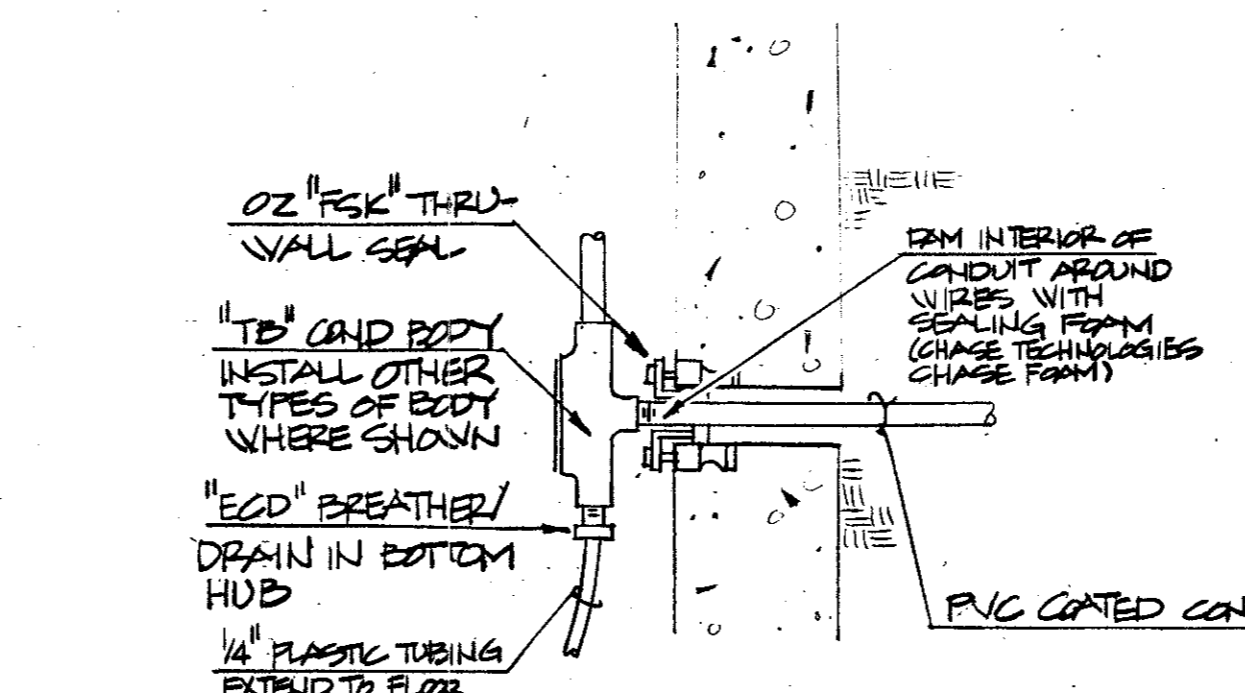
NOTES:
1. COAT FIELD CUT THREADS W/THREAD COMPOUND
2. USE SPECIAL CONDUIT DIES THAT HAVE OVER-SIZED REAR OPENING THAT WILL ALLOW BODY OF DIE TO SLIP OVER 40 MIL PVC COATING.
3. FOLLOW MANUFACTURER'S INSTALLATION DIRECTIONS.



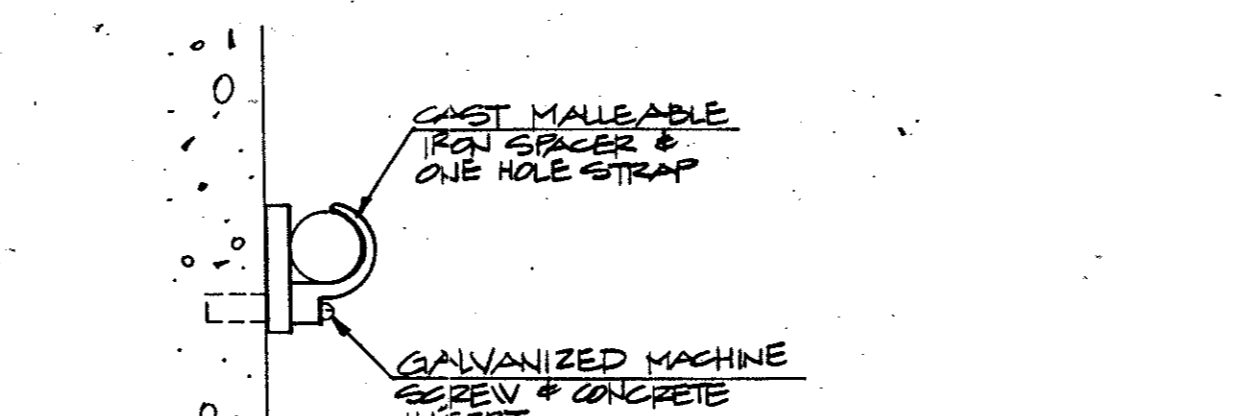
6 CONDUIT WALL PENETRATION



7 UNDERGROUND CONDUIT RUN



8 BELOW GRADE WALL PENETRATION



9 EXPOSED CONDUIT INSTALLATION-CEILING OR WALL



No.	Revision	By	Date
TOWN OF ADDISON DALLAS COUNTY, TEXAS CREEK SYSTEM IMPROVEMENTS ELECTRICAL SCHEMATICS & DETAILS GINN, INC. Consulting Engineers Dallas, Texas			
Designed - JK	Drawn - JW	Date - DEC, 1988	Job No. - 369
Approved - JK	Checked - JK	Scale - NONE	Sheet 23 Of 23

Joseph J. Kotela
Jan 16, 1989