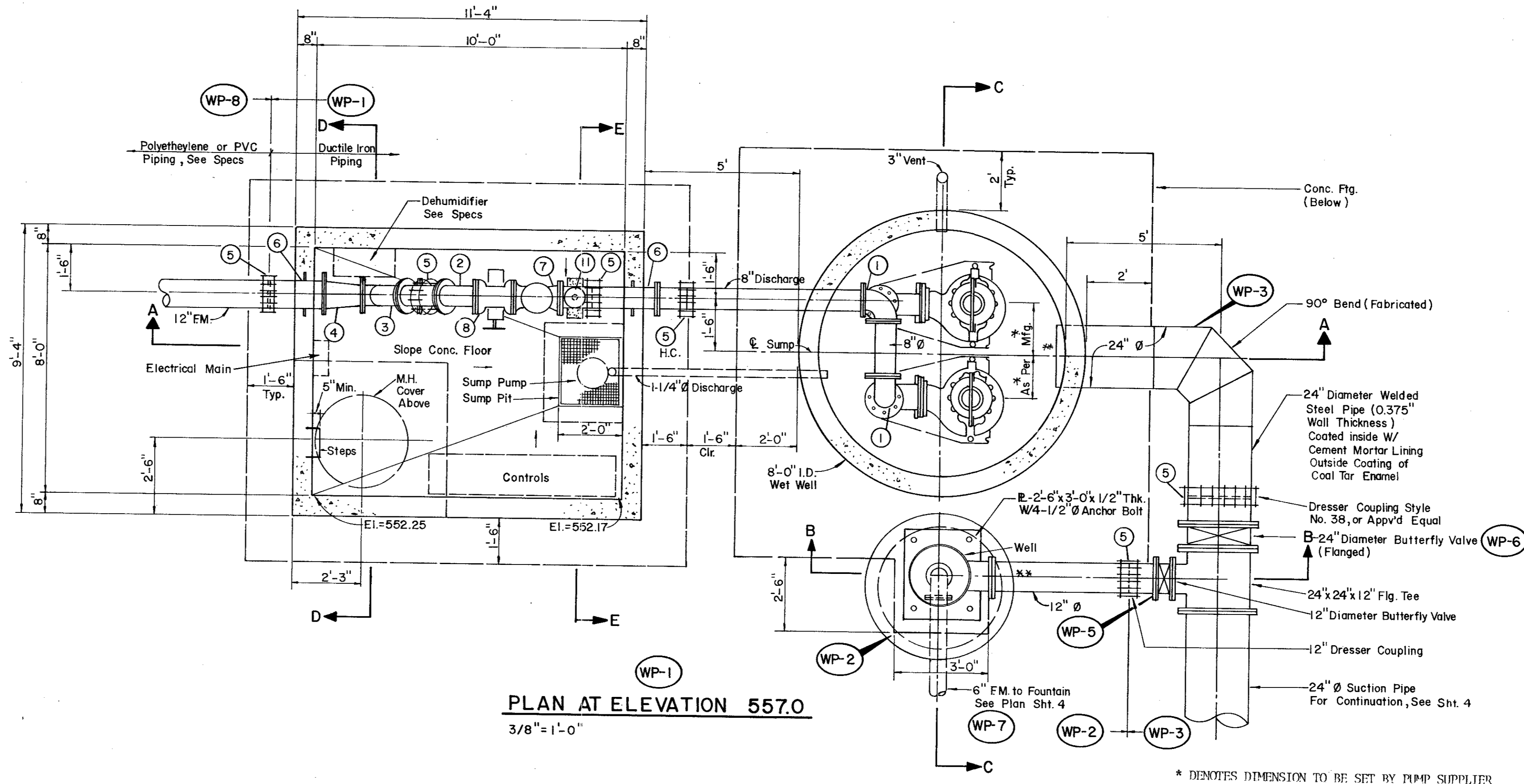
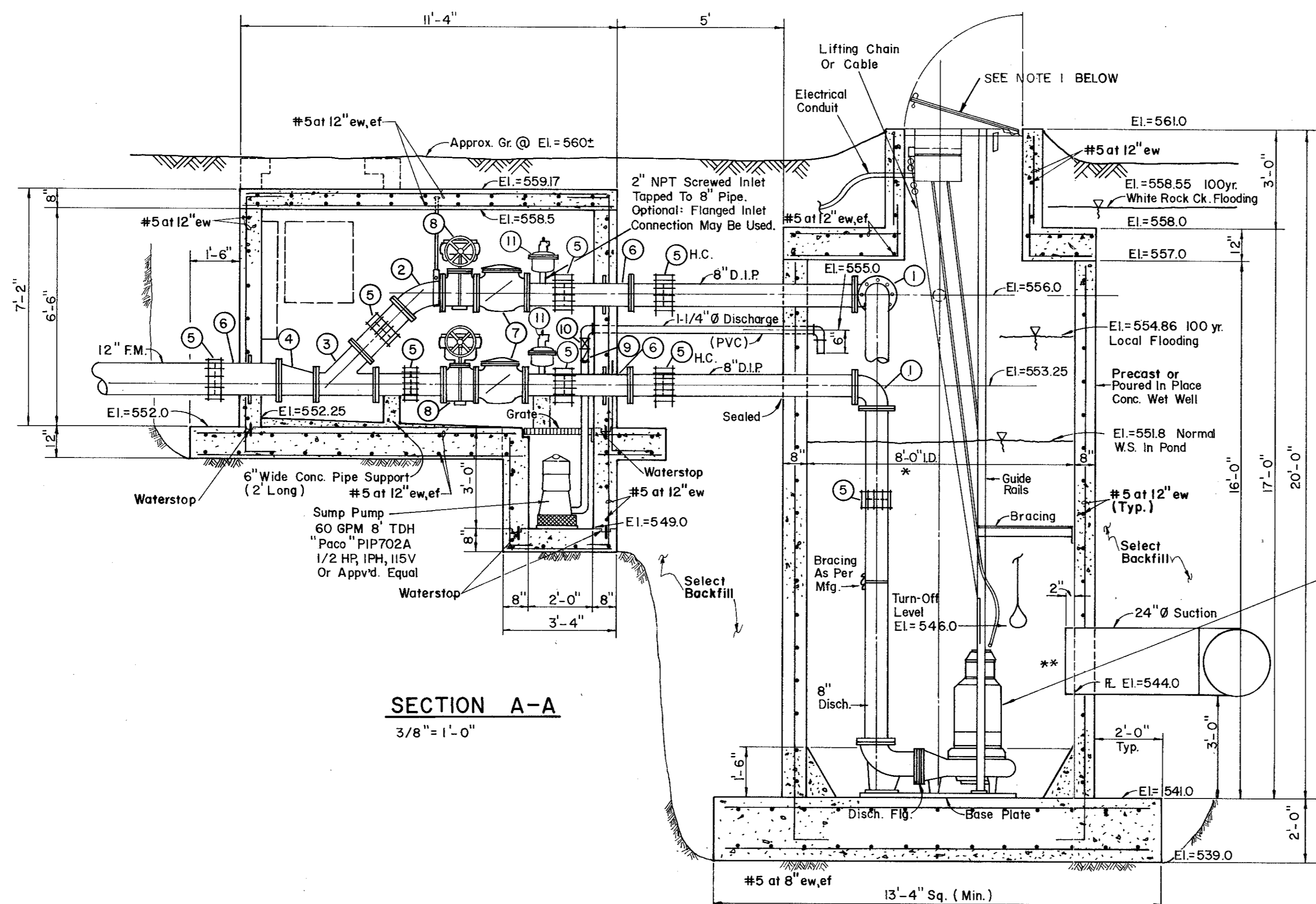


PIPE HANGER DETAIL
NO SCALE



PLAN AT ELEVATION 557.0
3/8" = 1'-0"

* DENOTES DIMENSION TO BE SET BY PUMP SUPPLIER



SECTION A-A
3/8" = 1'-0"

LEGEND

- 1 90° Bend (Flanged)
- 2 45° Bend (Flanged)
- 3 8" x 8" x 8" Lateral (Flanged)
- 4 12" x 8" Reducer (Flanged)
- 5 "Dresser" Type Coupling (Size Indicated)
- 6 Cast In Place Wall Pipe (Fig. & P.E.)
"Clow" F-1426, Or Approved Equal
- 7 Check Valve (See Specs)
- 8 Plug Valve (See Specs)
- 9 1-1/4" Check Valve
- 10 1-1/4" Gate Valve
- 11 Air Valve
"Crispin" Model DL20, 2" Deep Well
Air Valve as Manufactured by
Multiplex Manufacturing Company, or
Approved Equal.

* PUMP SUPPLIER SHALL VERIFY THAT INSIDE DIAMETER IS ACCEPTABLE FOR HIS PUMPS.

** PUMP SUPPLIER SHALL VERIFY SIZE AND LOCATION OF SUCTION LINE AND SHAPE OF SUMP. CHECK FOR DESTRUCTIVE VELOCITIES AND VORTICES.

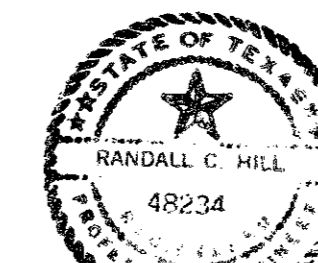
Duplex Pumps "Hydromatic" Submersibles Model SBLX, 870 RPM, 2000 GPM @ 27' TDH (Each) 20 HP, 3PH, 230 V Or Approved Equal.

H.C. = Harness Coupling

NOTE 1:

Access door configuration, size, dimensions, installation, lifting chain or cable, guide rails, etc. are shown so as to be included in this construction. Actual details may have to be modified based upon pump station manufacturer's specific requirements. Contractor shall submit shop drawings to engineer for approval prior to any work being done. Optional flat slab top on pump station will be considered if all information is supplied for proper review.

ew - Means Each Way
ew,ef - Means Each Way, Each Face



No.	Revision	By	Date
TOWN OF ADDISON DALLAS COUNTY, TEXAS CREEK SYSTEM IMPROVEMENTS WINNWOOD PARK PUMP STATION PLAN AND SECTION GINN, INC. Consulting Engineers Dallas, Texas			
Designed - AGF	Drawn - CL	Date - DEC. 1988	Job No. - 369
Approved - HWG	Checked - RCH	Scale - 3/8" = 1'-0"	Sheet 6 of 23

PLS 00384