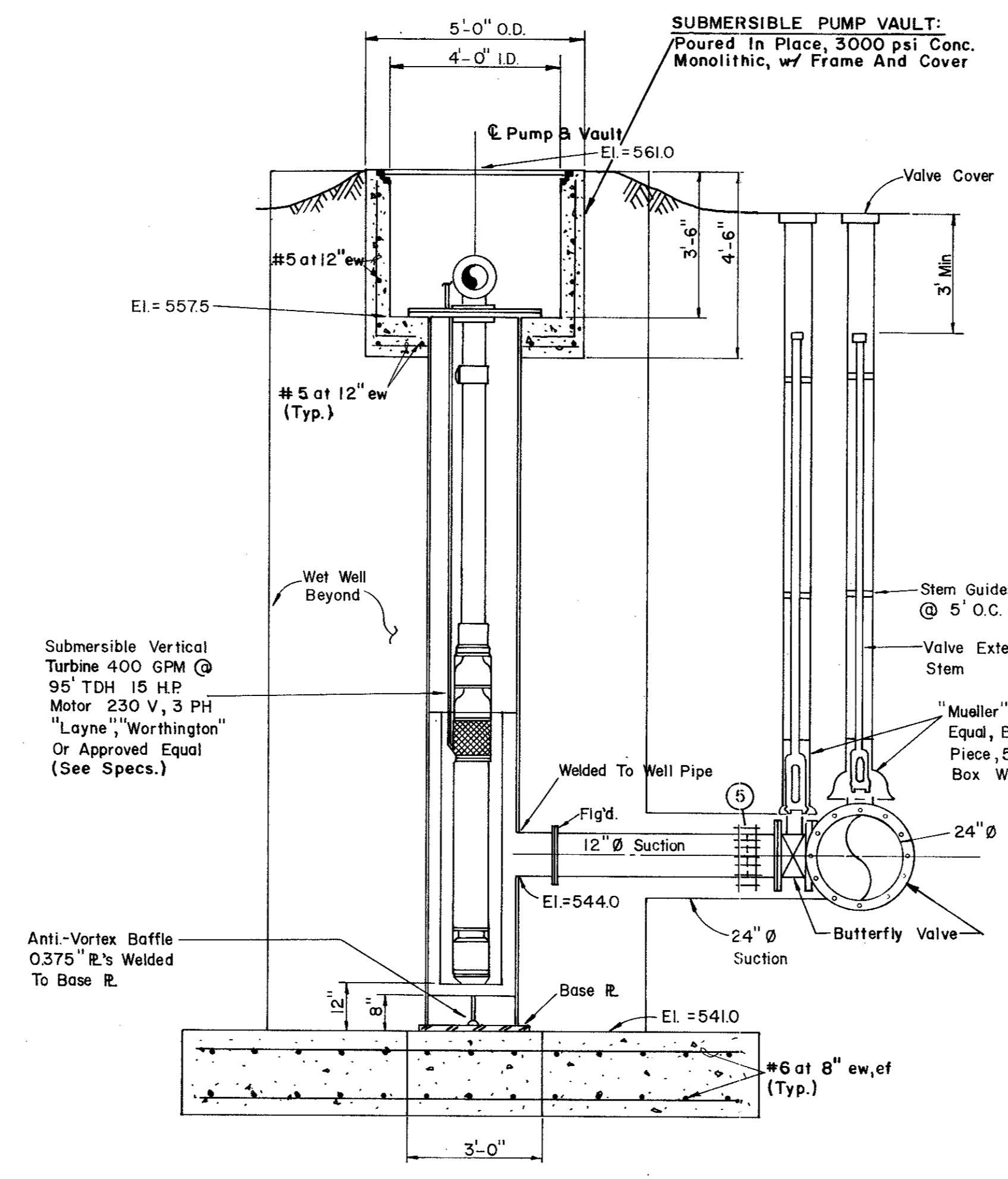
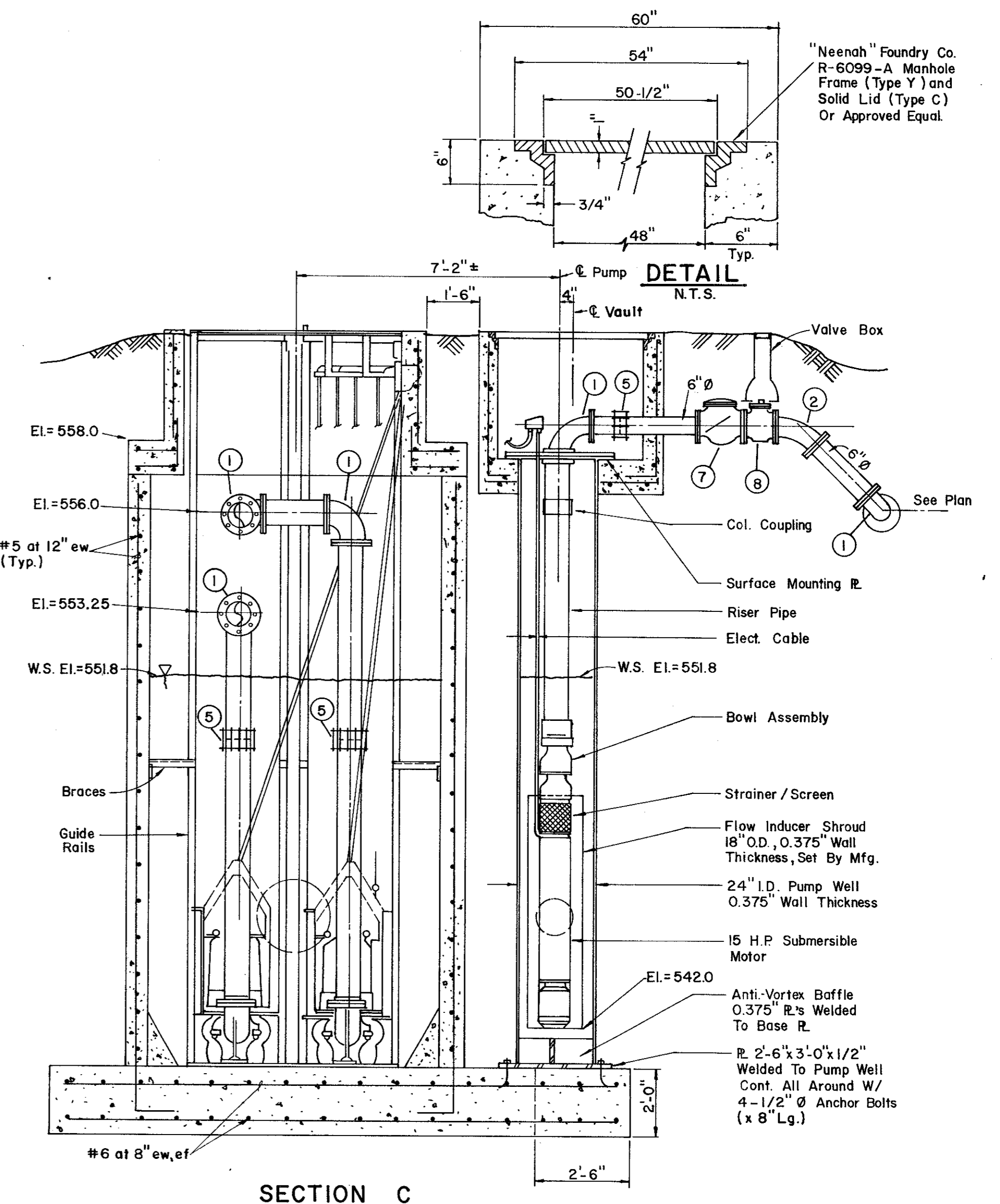


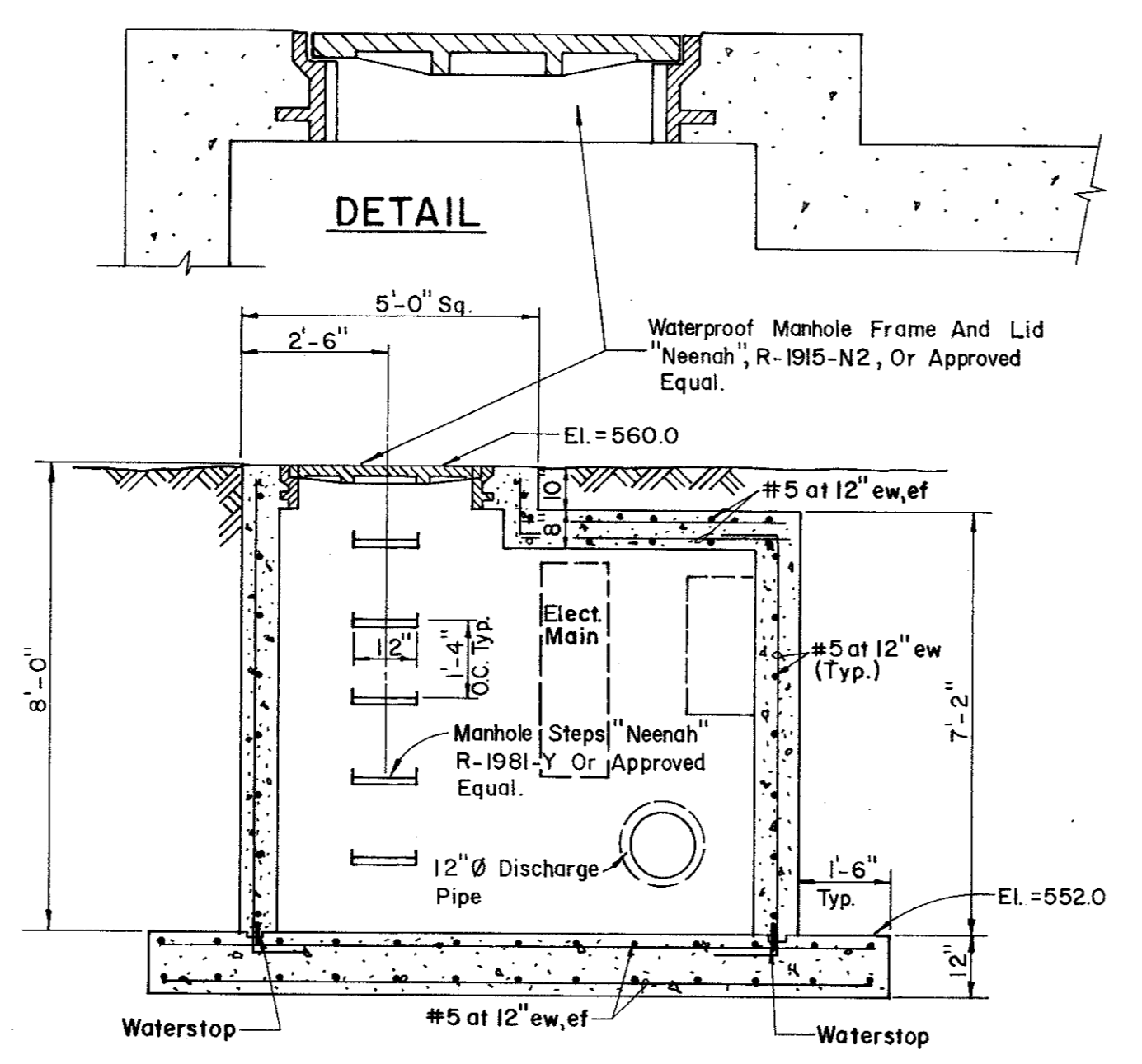
TOP VIEW
3/8"=1'-0"
* DEPENDENT UPON PUMP MFG.



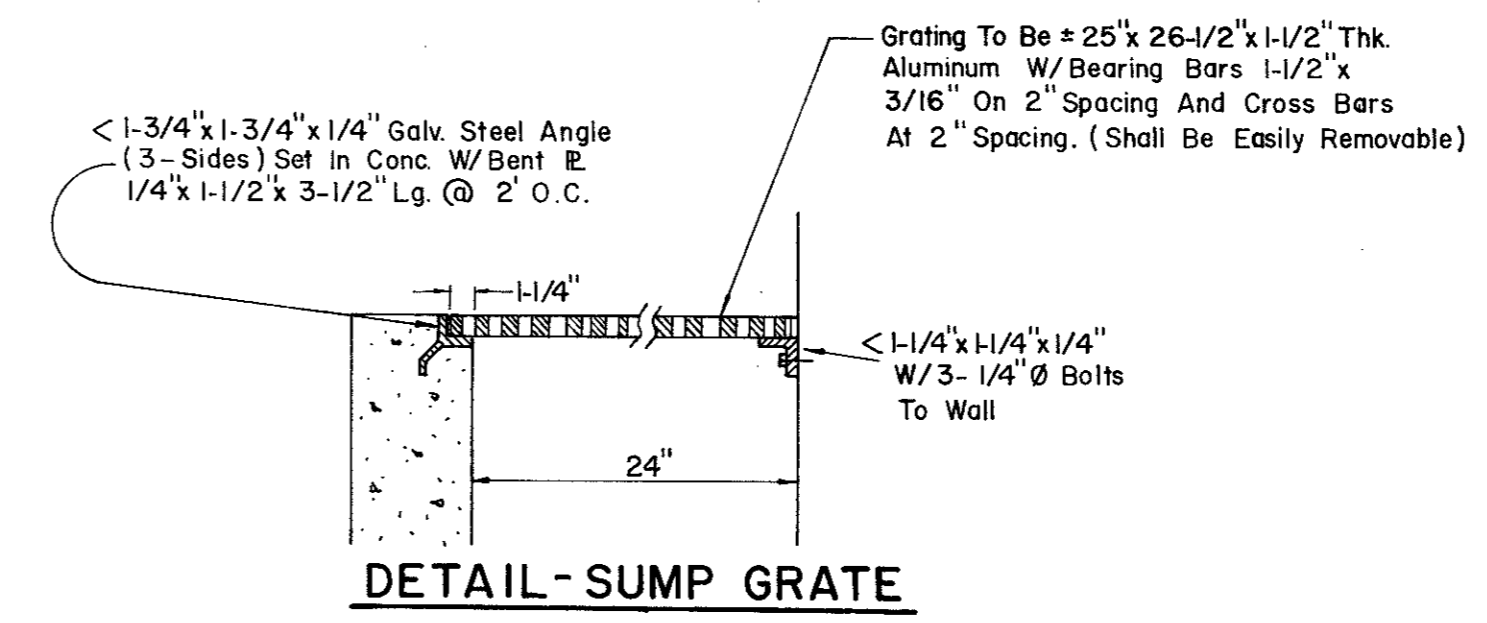
SECTION B



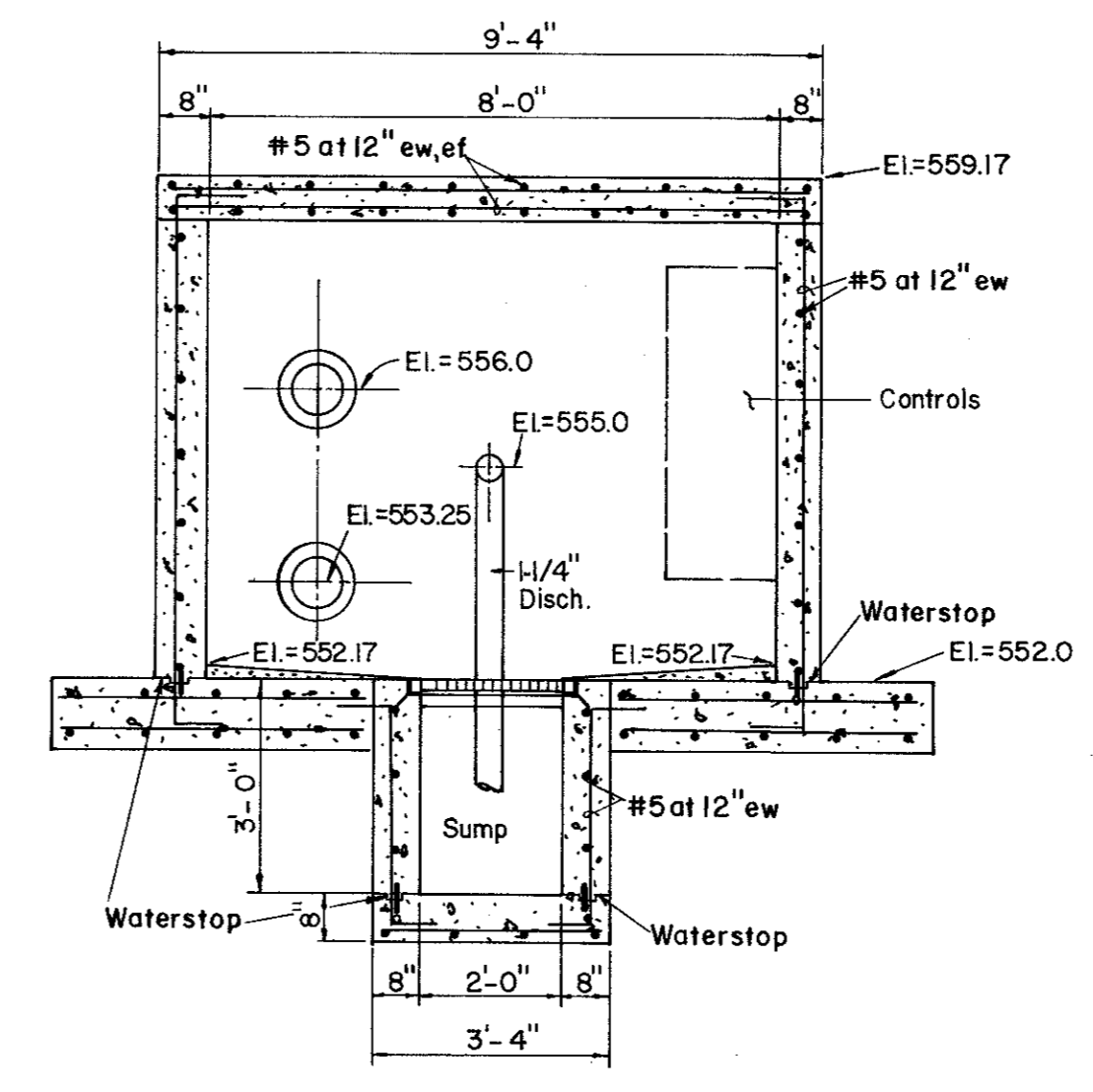
SECTION C



SECTION D

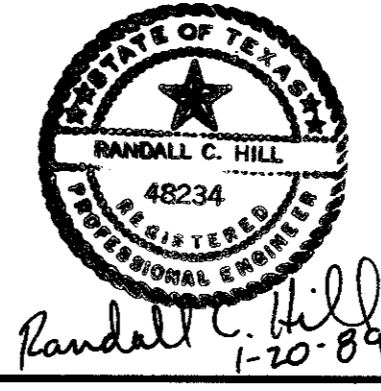


DETAIL - SUMP GRATE



SECTION E

- LEGEND**
- ① 90° Bend (Flanged)
 - ② 45° Bend (Flanged)
 - ③ 8" x 8" x 8" Lateral (Flanged)
 - ④ 12" x 8" Reducer (Flanged)
 - ⑤ "Dresser" Type Coupling (Size Indicated)
 - ⑥ Cast In Place Wall Pipe (Fig. & P.E.)
"Clow" F-1426, Or Approved Equal
 - ⑦ Check Valve (See Specs)
 - ⑧ Plug Valve (See Specs)
 - ⑨ 1-1/4" Check Valve
 - ⑩ 1-1/4" Gate Valve



No.	Revision	By	Date
TOWN OF ADDISON DALLAS COUNTY, TEXAS CREEK SYSTEM IMPROVEMENTS WINNWOOD PARK PUMP STATION DETAILS GINN, INC. Consulting Engineers Dallas, Texas			
Designed - AGF	Drawn - CL	Date - DEC. 1988	Job No. - 369
Approved - HWG	Checked - RCH	Scale - 3/8"=1'-0"	Sheet 7 of 23