



TOWN HALL

PARKING LOT

MATCH LINE

"NORTH" DISCHARGE STRUCTURE, SEE SHT. 17, EL. 574.0 TO BE FIELD LOCATED W/ ENGR'S APPROVAL

INSTALL APPROX. 190 LF 10" DIA. FM. AT @ CREEK

INSTALL APPROX. 990 LF 12" DIA. FM. PLACED AT @ OF EXIST. CREEK BOTTOM

NOTE: EXIST. 12" VCT SANI. SWR. LINE (DALLAS 411Q 1960A) LOCATED AT APPROX. @ OF CREEK. ALSO VERIFY LOCATION PRIOR TO INSTALLATION OF 12" @ F.M.

72" R.C.P. w/ Hdwl. R. 575.08

WS 576.0

WS 574.0

WS 567.5

WS 570.5

WS 573.0

OAKS NORTH DRIVE

FOR DETAIL THIS AREA, SEE SHT. 14

FOR CONT. SEE SHT. 12

2-90° BENDS

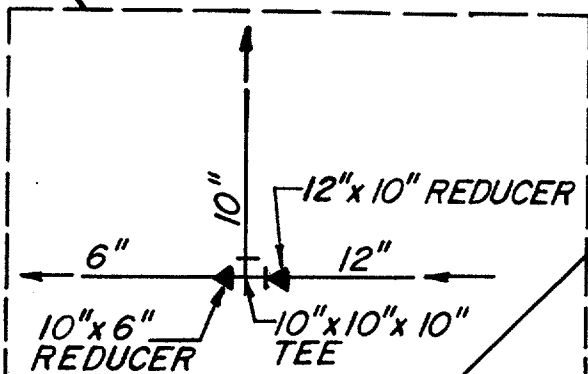
2-90° BENDS

12" F.M.

R. 552.5

RCS R. EL. 561.22 (VERIFY)

90° BEND R. 559.0



MATCH LINE

FOR DETAILS OF CONC. RIP-RAP SLOPE PROTECTION SEE SHT. 21

Prop. Conc. Rip-Rap

"SOUTH" DISCHARGE STRUCTURE EL. 574.0, SEE SHT. 17, TO BE FIELD LOCATED, W/ ENGR. APPROVAL

L-4

No.	Revision	By	Date
TOWN OF ADDISON DALLAS COUNTY, TEXAS CREEK SYSTEM IMPROVEMENTS			
TOWN HALL POND LAYOUT			
GINN, INC.			
Consulting Engineers Dallas, Texas			
Designed - RCH	Drawn - DEM	Date - OCT., 1988	Job No. - 369
Approved - HWG	Checked - RCH	Scale - 1" = 20'	Sheet 13 of 21

PRECED 305544