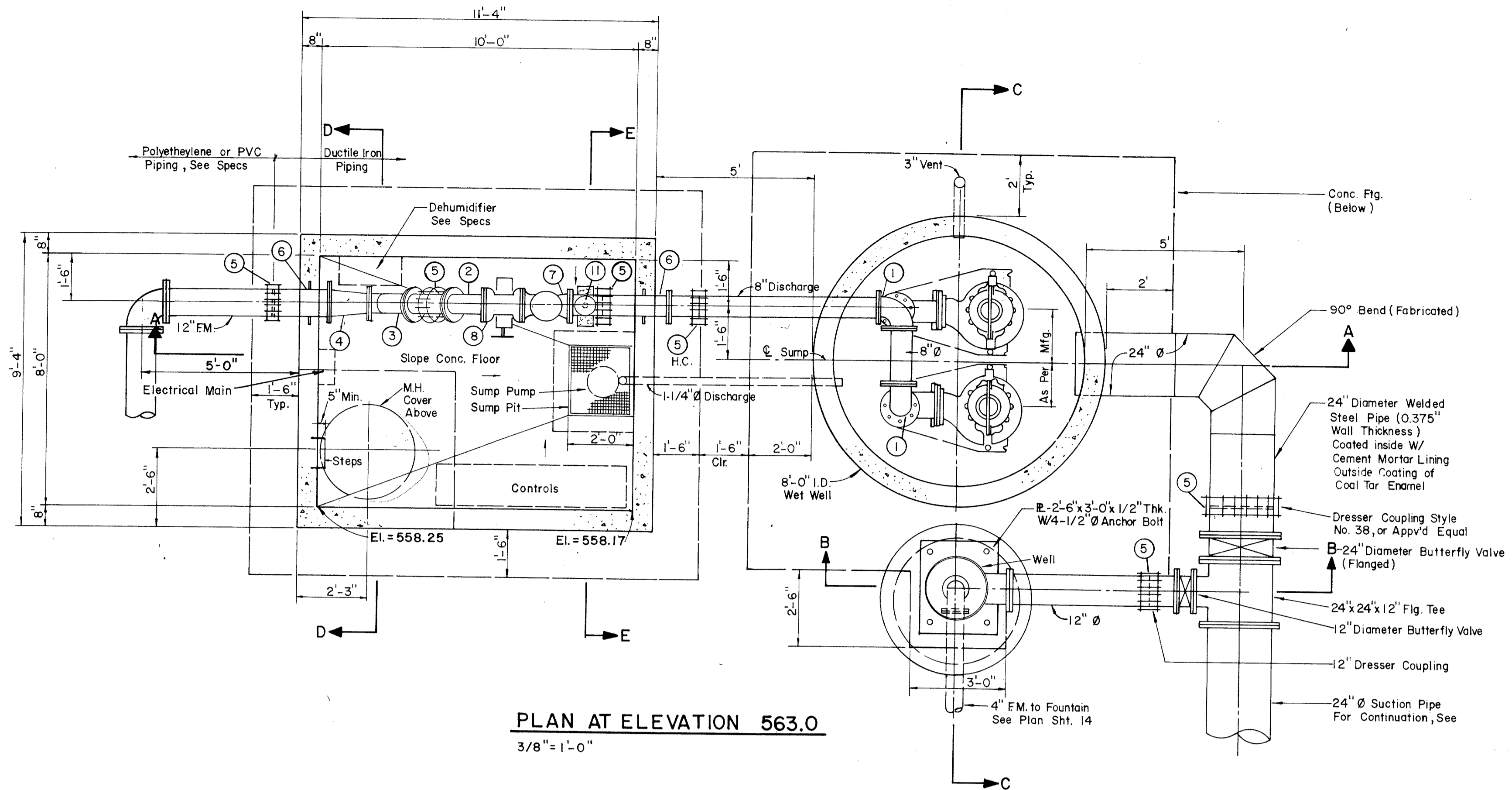
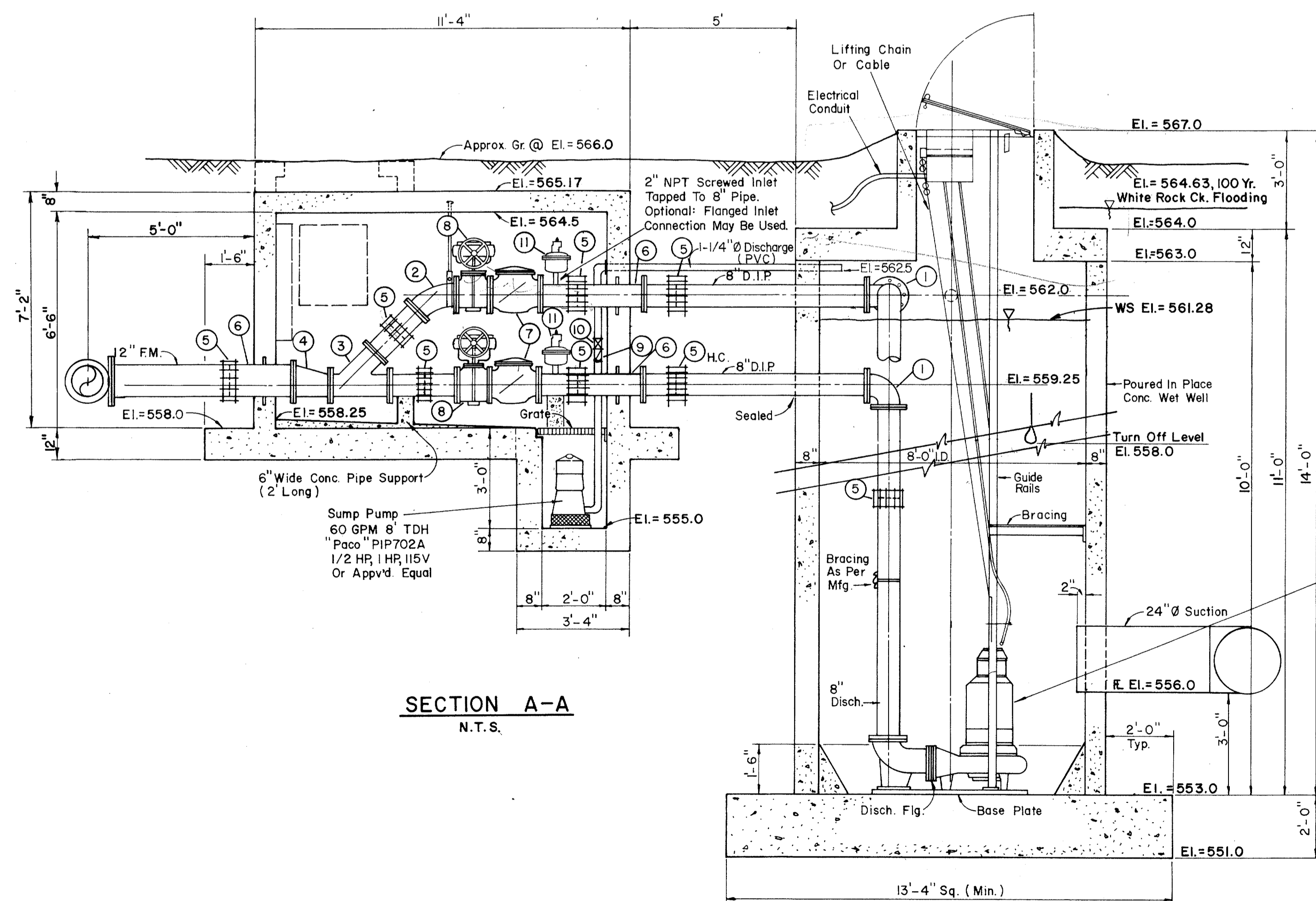


**PIPE HANGER DETAIL**  
NO SCALE



**PLAN AT ELEVATION 563.0**  
3/8" = 1'-0"



**SECTION A-A**  
N.T.S.

**LEGEND**

- ① 90° Bend (Flanged)
- ② 45° Bend (Flanged)
- ③ 8" x 8" Lateral (Flanged)
- ④ 12" x 8" Reducer (Flanged)
- ⑤ "Dresser" Type Coupling (Size Indicated)
- ⑥ Cast In Place Wall Pipe (Fig. & P.E.) "Clow" F-1426, Or Approved Equal
- ⑦ Check Valve (See Specs)
- ⑧ Plug Valve (See Specs)
- ⑨ 1-1/4" Check Valve
- ⑩ 1-1/4" Gate Valve
- ⑪ Air Valve "Crispin" Model DL20, 2" Deep Well Air Valve as Manufactured by Multiplex Manufacturing Company, or Approved Equal.

Duplex Pumps "Hydromatic" Submersibles Model SBLX, 870 RPM, 1500 GPM @ 40' TDH (Each) 20HP, 3PH, 230 V Or Approved Equal.

H.C. = Harnessed Coupling

No.	Revision	By	Date
TOWN OF ADDISON DALLAS COUNTY, TEXAS <b>CREEK SYSTEM IMPROVEMENTS</b>			
<b>FINANCE CENTER PUMP STATION PLAN AND SECTION</b>			
GINN, INC. Consulting Engineers Dallas, Texas			
Designed - AGF	Drawn - CL	Date - DEC. 1988	Job No. - 369
Approved - HWG	Checked - RCH	Scale - AS NOTED	Sheet 15 Of 21